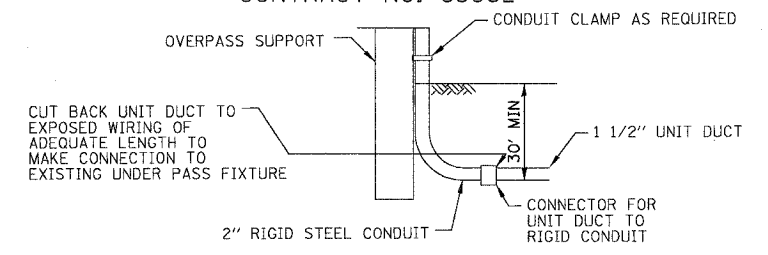
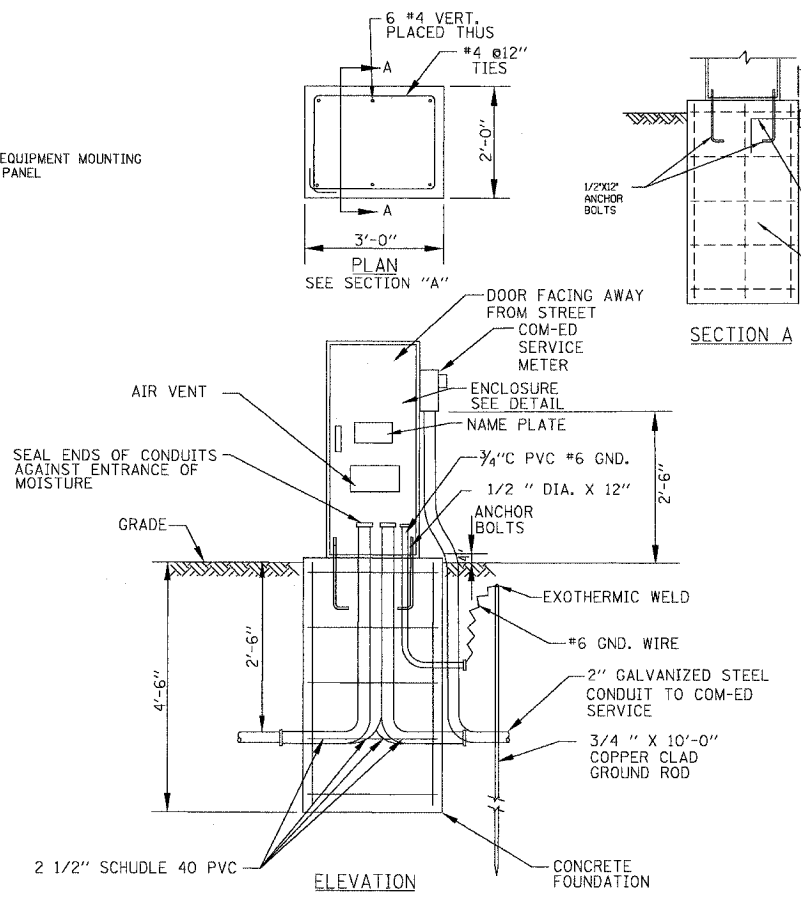
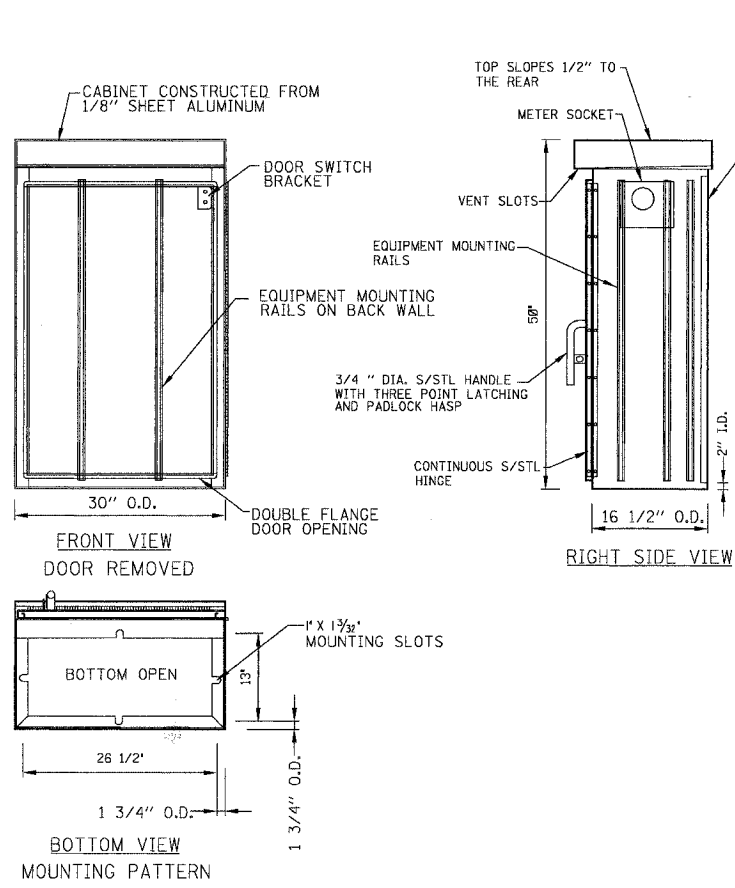
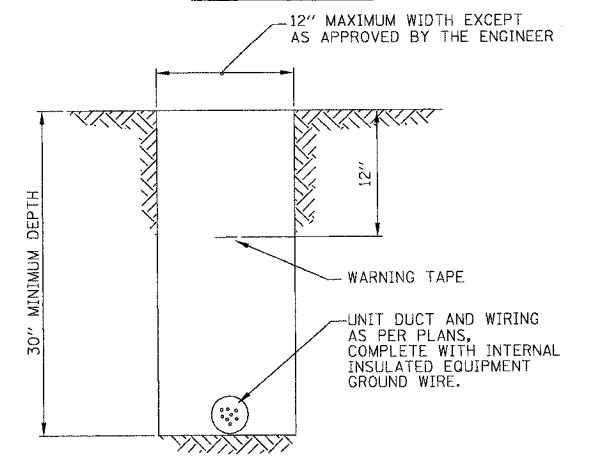


CONTRACT NO. 83962



TYPICAL DETAIL FOR SPLICING CONDUIT TO UNIT DUCT

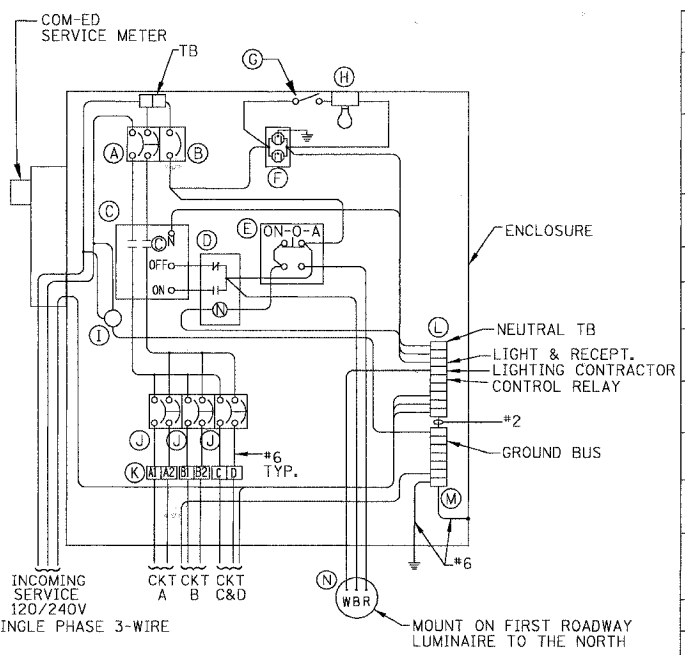


TYPICAL WIRING IN TRENCH DETAIL

LIGHTING CONTROLLER AND FOUNDATION DETAIL

NO SCALE

NO SCALE

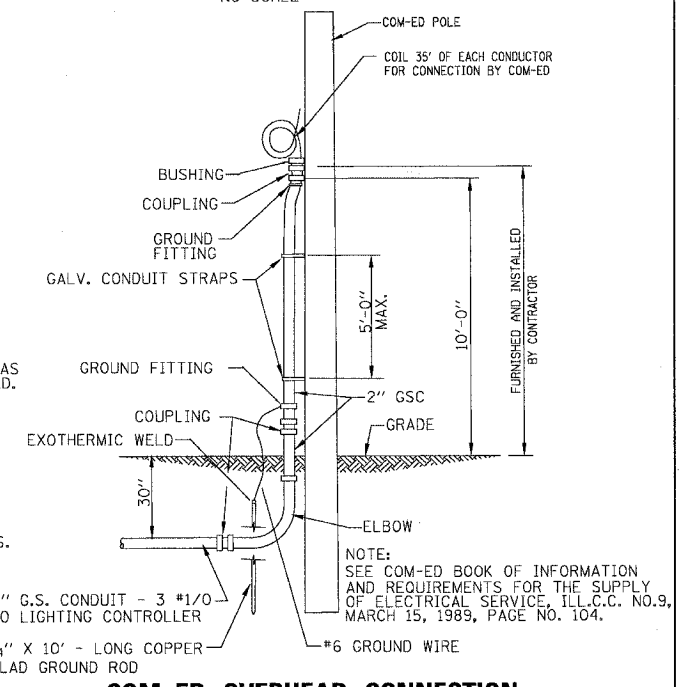


LIGHTING CONTROLLER No. 4 WIRING DIAGRAM

ITEM	QTY.	DESCRIPTION
A	1	MAIN CIRCUIT BREAKER, MOLDED CASE, THERMAL MAGNETIC, 2-POLE, 240 V. SINGLE-PHASE, 150A, BOLT-ON TYPE, TRIP INTERRUPTING RATING OF 22,000 RMS SYMMETRICAL AMPERES AT 240 V.
B	1	CONTROL CIRCUIT BREAKER, MOLDED CASE, THERMAL MAGNETIC, SINGLE-POLE, 120 V. SINGLE PHASE 20 A. BOLT-ON TYPE, TRIP INTERRUPTING RATING OF 14,000 RMS SYMMETRICAL AMPERES AT 120 V.
C	1	LIGHTING CONTACTOR MECHANICALLY HELD, SQUARE "D" SVO10600V 200A, 2-POLE, 600 V. WITH 120 COIL OR EQUAL
D	1	CONTROL RELAY CUTLER HAMMER D3PR2 RATED 12 A. AT 120 VAC OR EQUAL
E	1	ON-OFF-AUTO 3-POSITION SELECTOR SWITCH GE CR104P HEAVY DUTY SWITCH, RATED FOR 10 A. AT 600 VAC.
F	1	GFCI RECEPTACLE, 120 V., 20 A. SPEC. GRADE, NEMA CONFIG. 5-20R
G	1	SPDT LIMIT SWITCH WITH SIDE PUSH ROD PLUNGER SQUARE "D" 88082 RATED 10 A. AT 120 V. OR EQUAL
H	1	60 WATT LIGHT FIXTURE, VAPOR TIGHT, WITH GLOBE, GUARD AND MOUNTING BOX.
I	4	SECONDARY SURGE ARRESTER SQUARE D SDSA1175, 175 VAC PHASE-TO-GROUND MAXIMUM OR EQUAL
J	3	BRANCH CIRCUIT BREAKER, MOLDED CASE, THERMAL MAGNETIC, 2-POLE, 240 V. SINGLE-PHASE, 60A, TRIP INTERRUPTING RATING 22,000 RMS SYMMETRICAL AMPERES AT 240 V.
K	1	TERMINAL BLOCK RATED 600 V., 85 A.
L	1	COPPER NEUTRAL BUS
M	1	COPPER GROUND BUS

NOTES

- CABINET SHALL BE FABRICATED FROM 0.125-INCH SHEET ALUMINUM, ALLOY 5052 FORMED AND ARC WELDED ASSEMBLY WITH NEMA 3R RATING.
- ALL SCREWS AND HARDWARE SHALL BE PLATED, GALVANIZED, OR MADE OF BRASS, ALUMINUM OR STAINLESS STEEL.
- NAME PLATE SHALL HAVE ENGRAVED 0.75-INCH HIGH LETTERS FILLED IN BLACK: LINE ONE "CITY OF OAK FOREST", LINE TWO "STREET LIGHTING"
- CABINET SHALL BE PRIMED AND PAINTED AS SPECIFIED.
- ELECTRIC UTILITY METER BOX SHALL BE MOUNTED ON THE SIDE OF CONTROL CABINET AS SHOWN ON THE PANEL LAYOUT DIAGRAM.
- THE COMPLETED CONTROLLER AND ALL ELECTRICAL COMPONENTS SHALL BE U.L. LISTED AS AN INDUSTRIAL CONTROL PANEL UNDER UL508, AND SHOULD BE SERVICE ENTRANCE RATED.
- METAL MOUNTING PANEL SHALL BE #10 GAUGE GALVANIZED SHEET STEEL FLANGED BACK 0.75-INCHES I.D. ON 4 SIDES.
- CIRCUIT BREAKERS AND CONTACTOR AND OTHER COMPONENTS SHALL BE MOUNTED ON 0.125-INCH THICK GLASTIC INSULATION BACK PANEL.
- ALL DEVICES SHALL BE FRONT REMOVABLE.
- BUS BAR SHALL HAVE 22 LUG TERMINALS SIZED TO ACCOMMODATE REQUIRED WIRE SIZES. NEUTRAL BUS SHALL BE PAINTED WHITE. GROUND BUS SHALL BE PAINTED GREEN.
- ALL LUGS SHALL BE COPPER SCREWS AND CONNECTORS, SPRING HELD.
- ALL WIRING TERMINATIONS SHALL BE RATED NOT LESS THAN 75 DEGREE CENTIGRADE.
- ALL CONTROL WIRING SHALL BE 600V MACHINE TOOL WIRE TYPE MTW.
- ALL POWER WIRING SHALL BE 600V TYPE RHH/RHW.
- A LAMINATED COPY OF THE CIRCUIT SCHEMATIC DIAGRAM SHALL BE ATTACHED TO THE INSIDE OF THE CONTROLLER.
- ALL 120 VOLT SYSTEM AND ALL CONTROL WIRING SHALL BE #12 AWG STRANDED UNLESS OTHERWISE INDICATED.
- ALL WIRING SHALL BE NEATLY DRESSED AND SUPPORTED.
- SERVICE EQUIPMENT SHALL BE MARKED TO IDENTIFY IT AS BEING SUITABLE FOR USE AS SERVICE EQUIPMENT.



COM-ED OVERHEAD CONNECTION

NO SCALE



John L. Dan  
ELECTRICAL ENGINEER

COPYRIGHT © 2007 BY BAXTER & WOODMAN, INC.  
 STATE OF ILLINOIS - PROFESSIONAL DESIGN FIRM  
 LICENSE NO. 084-00017 - EXPIRES 4/30/2009  
 2500 N. WISCONSIN ST., SUITE 200, OAK FOREST, IL 60451

CONSULTANTS	REV. NO.	DATE	DESCRIPTION

\* REFER TO EQUIPMENT MANUFACTURER'S SHOP DRAWINGS

DRAWING FILE: #FILEA#

**BAXTER & WOODMAN**  
Consulting Engineers

*Baxter & Woodman*  
Crystal Lake, Illinois 815.489.1260  
Hoope, Illinois 815.773.1870  
Burlington, Wisconsin 262.763.7634  
Mokena, Illinois 708.478.2090  
DeKalb, Illinois 815.787.8111  
Orland Park, Illinois 847.293.0988  
Rockford, Illinois 815.489.1653  
Plainfield, Illinois 815.609.7485

**CITY OF OAK FOREST, ILLINOIS**  
FAP 350 CICERO AVENUE IMPROVEMENTS  
(155TH ST. TO 159TH ST.)

**STREET LIGHTING DETAILS**

DESIGNED BY: JLR  
DRAWN BY: MAC  
CHECKED BY: JTB  
DATE: 06/21/07

SCALE: NONE  
PROJECT NO.: 060467  
SHEET NO.: 7 OF 10