

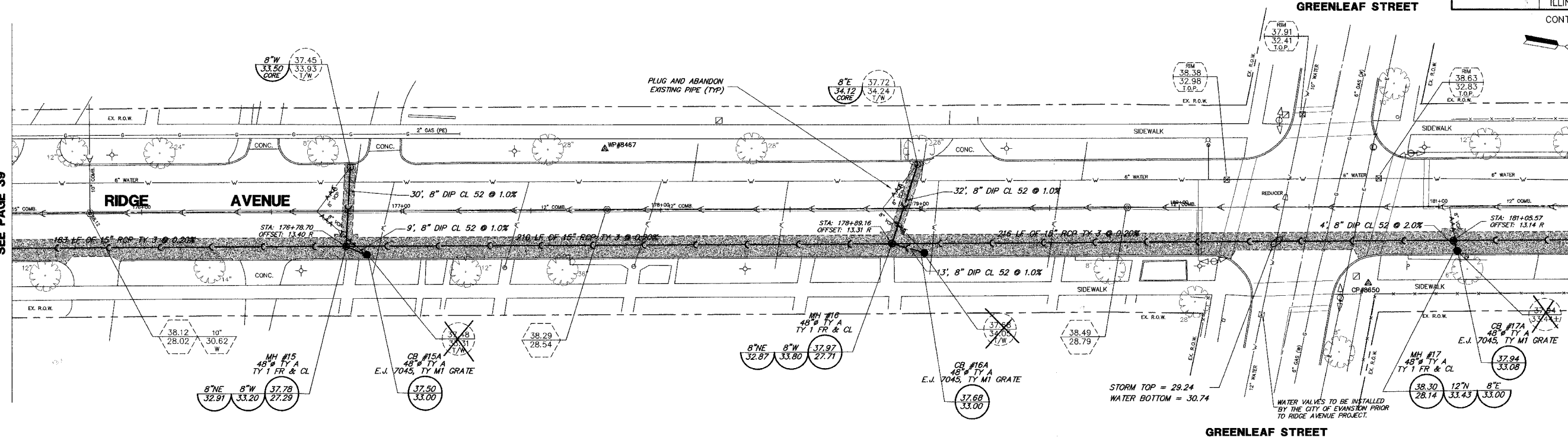
F.A.P. R.T.E.	SECTION	COUNTY	TOTAL SHEETS	SHEET NO.
	06-00241-00-PV	COOK	115	40
DRAINAGE & UTILITY STA 175+50 TO 181+50				
ILLINOIS				

CONTRACT NUMBER 83968

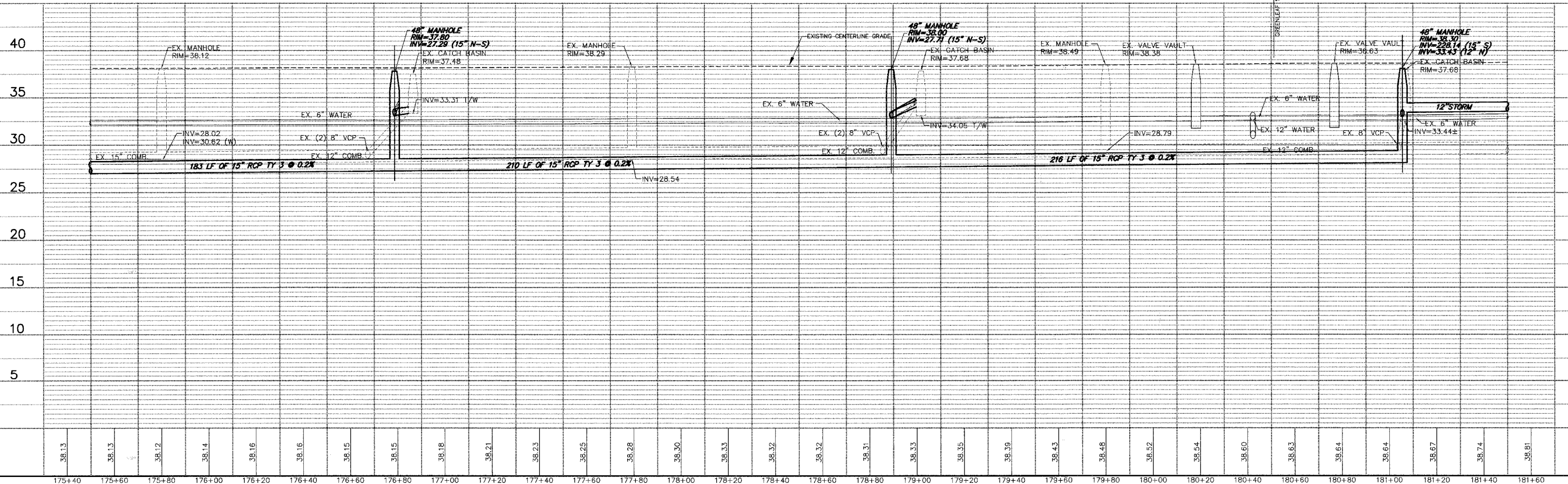
MATCH LINE STA. 175+50
SEE PAGE 39

MATCH LINE STA. 181+50
SEE PAGE 41

SCALE:
H: 1"=20'
V: 1"=5'



RIDGE AVENUE



PLAN & PROFILE

**RIDGE AVENUE
RELIEF SEWER IMPROVEMENTS
EVANSTON, ILLINOIS**

**GEWALT HAMILTON
ASSOCIATES, INC.**
CONSULTING ENGINEERS & SURVEYORS
850 Forest Edge Drive Vernon Hills, IL 60061 Tel. 847.478.9700 Fax 847.478.9701

COPYRIGHT NOTICE
This drawing is the property of Gewalt-Hamilton Assoc., Inc. and is not to be used for any purpose other than the specific project and site named herein, and cannot be reproduced in any manner without the express written permission from Gewalt-Hamilton Associates, Inc.

NO.	BY	DATE	REVISION
3	SDB	8-28-07	PER IDOT COMMENTS
2	KD	7-27-07	PER IDOT COMMENTS ON 7/24/07
1	DSM	5-18-07	FIRST SUBMITTAL

FILE:	3566.100	SHEET NUMBER:	40
DRAWN BY:	GW3	GHA PROJECT #:	3566.100
DATE:		CHECKED BY:	SDB
CHECKED BY:	SDB	SCALE:	H: 1"=20' V: 1"=5'
DATE:			OF 115 SHEETS

RIDGE AVE. RELIEF SEWER PLAN & PROFILE - 3566.100