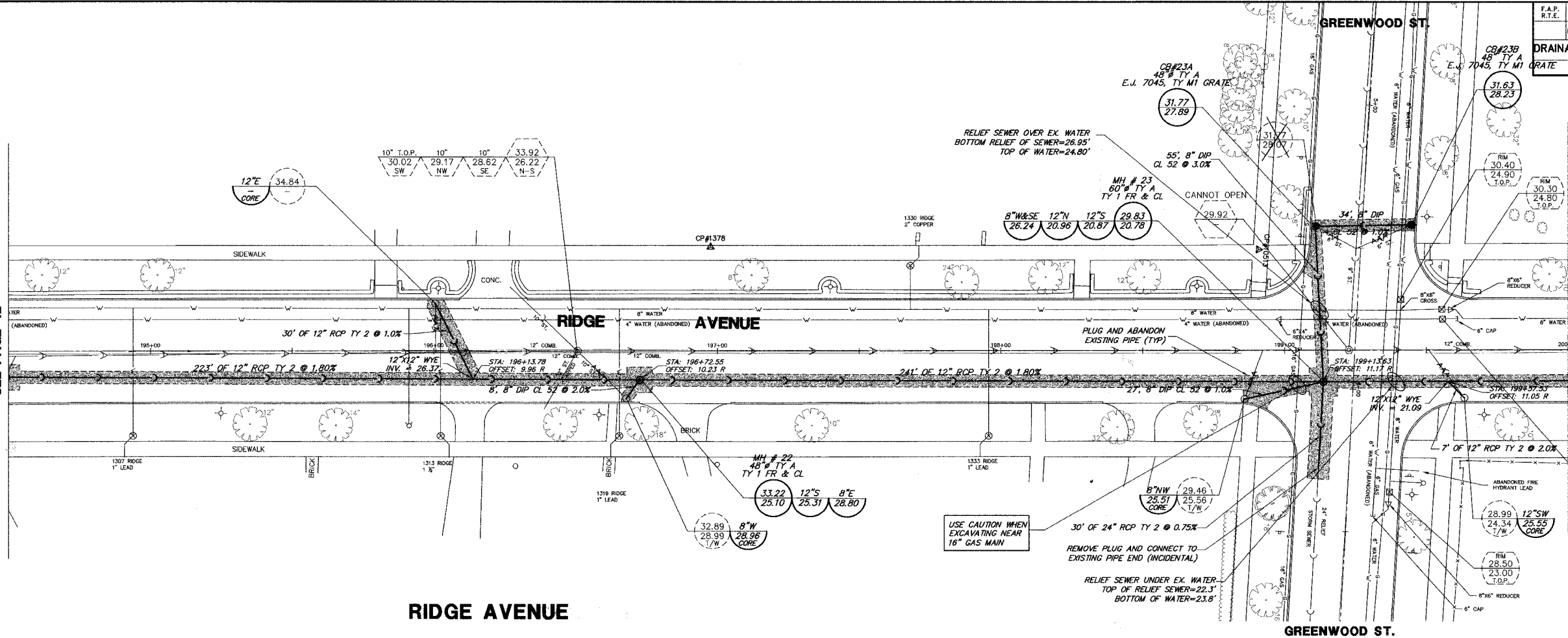


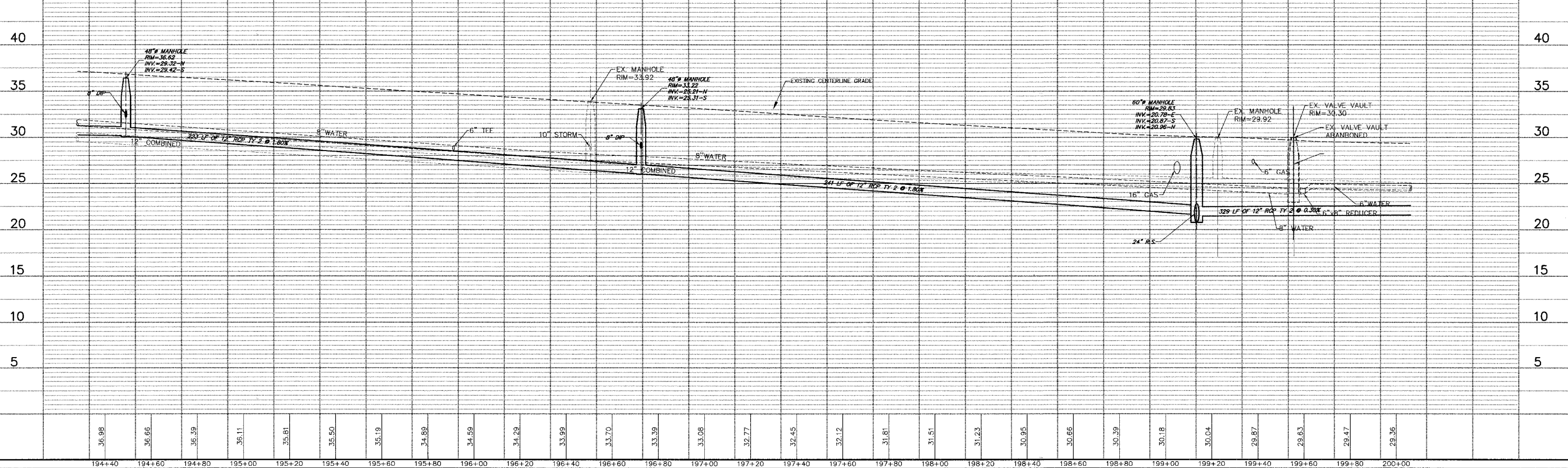
MATCH LINE STA. 194+50  
SEE PAGE 42

MATCH LINE STA. 200+00  
SEE PAGE 44



**RIDGE AVENUE**

**GREENWOOD ST.**



**PLAN & PROFILE**

**RIDGE AVENUE  
RELIEF SEWER IMPROVEMENTS  
EVANSTON, ILLINOIS**

**GEWALT HAMILTON ASSOCIATES, INC.**  
CONSULTING ENGINEERS & SURVEYORS  
850 Forest Edge Drive Vernon Hills, IL 60061 Tel. 847.478.9700 Fax 847.478.9701

**COPYRIGHT NOTICE**  
This drawing is the property of Gewalt-Hamilton Assoc., Inc. and is not to be used for any purpose other than the specific project and site named herein, and cannot be reproduced in any manner without the express written permission from Gewalt-Hamilton Associates, Inc.

NO.	BY	DATE	REVISION
3	SDB	8-28-07	PER IDOT COMMENTS
2	KD	7-27-07	PER IDOT COMMENTS ON 7/24/07
1	DSM	5-18-07	FIRST SUBMITTAL

FILE	3566-CONTRACT-D.DWG	SHEET NUMBER	<b>43</b>
DRAWN BY:	CWS	GHA PROJECT #	3566.100
DATE:		SCALE	H: 1"=20' V: 1"=5'
CHECKED BY:	SDB	DATE	1-30-06
NO. BY DATE		REVISION	

RIDGE AVE. RELIEF SEWER STA. 42+60 TO 49+00