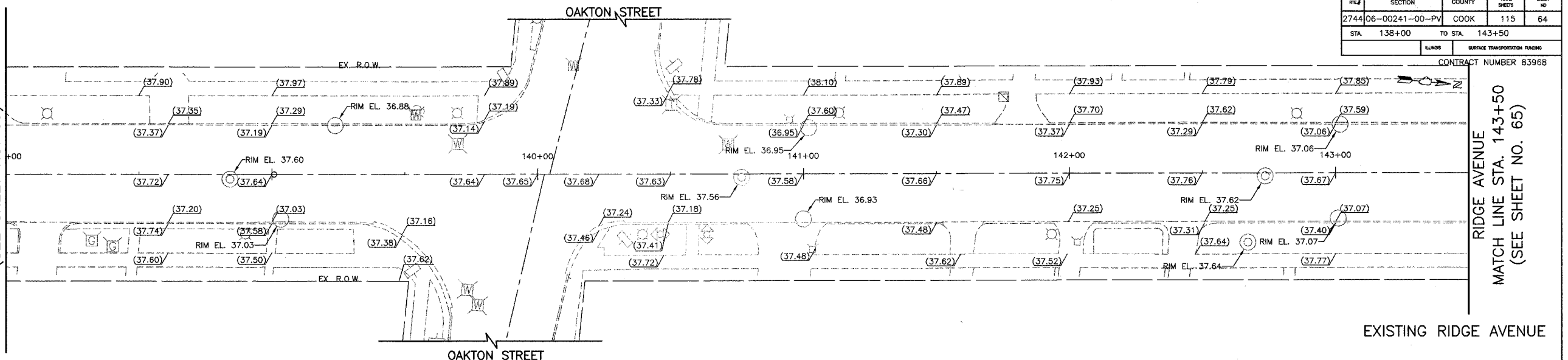


FILE	SECTION	COUNTY	TOTAL SHEETS	SHEET NO
2744	06-00241-00-PV	COOK	115	64
STA. 138+00		TO STA. 143+50		
ILLINOIS		SURFACE TRANSPORTATION FUNDING		

CONTRACT NUMBER 83968

RIDGE AVENUE
MATCH LINE STA. 138+00
(SEE SHEET NO. 63)

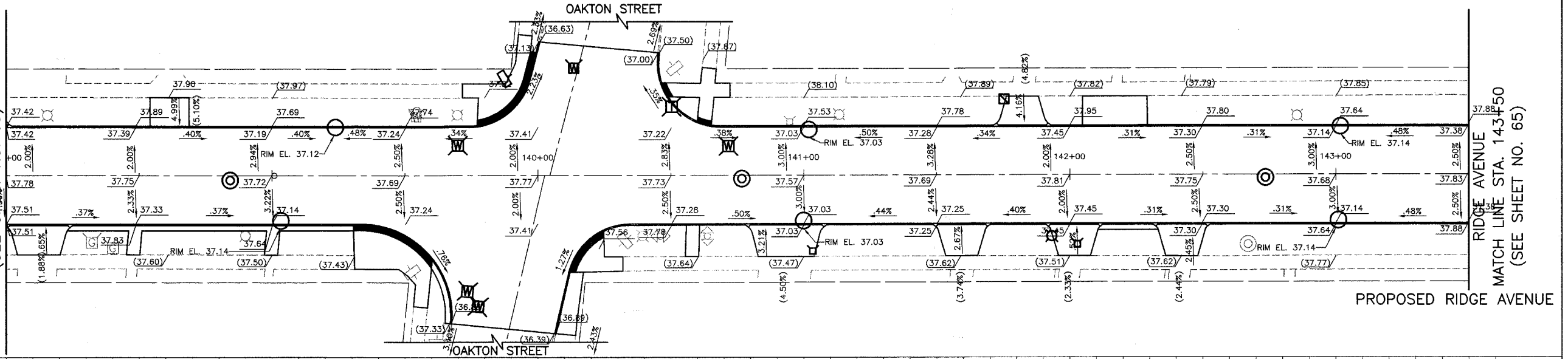
RIDGE AVENUE
MATCH LINE STA. 143+50
(SEE SHEET NO. 65)



EXISTING RIDGE AVENUE

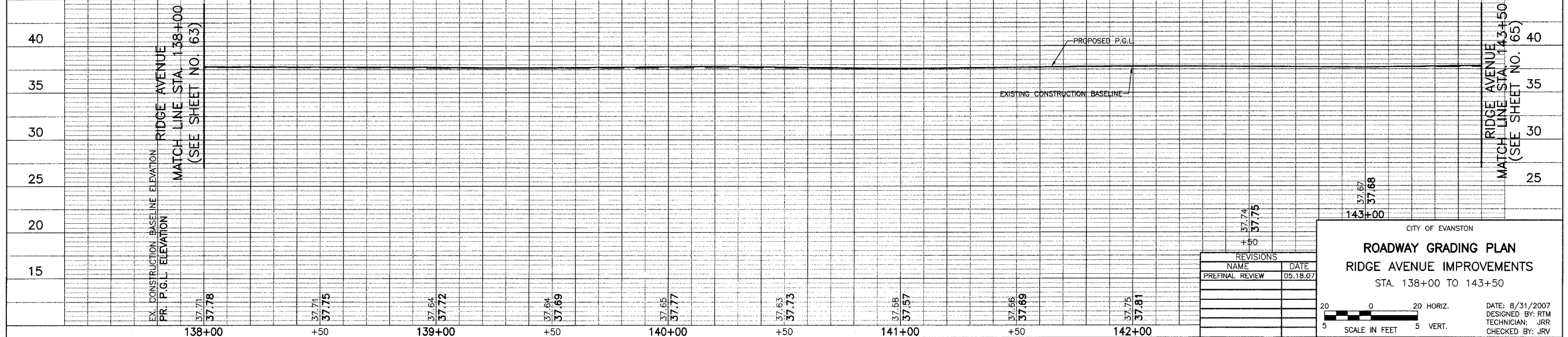
RIDGE AVENUE
MATCH LINE STA. 138+00
(SEE SHEET NO. 63)

RIDGE AVENUE
MATCH LINE STA. 143+50
(SEE SHEET NO. 65)



PROPOSED RIDGE AVENUE

LEGEND
(XX.XX) EXISTING ELEVATION
XX.XX PROPOSED ELEVATION



REVISIONS	
NAME	DATE
PREFINAL REVIEW	05.18.07

CITY OF EVANSTON

ROADWAY GRADING PLAN

RIDGE AVENUE IMPROVEMENTS

STA. 138+00 TO 143+50

DATE: 8/31/2007
DESIGNED BY: RTM
TECHNICIAN: JRR
CHECKED BY: JRV

SCALE IN FEET
5 20 5 HORIZ.
5 VERT.