

SECTION	COUNTY	TOTAL SHEETS	SHEET NO.
274408-00241-00-PV	COOK	115	71
STA. 175+00	TO STA. 180+00		
CONTRACT NUMBER 83968			

RIDGE AVENUE
MATCH LINE STA. 175+00
(SEE SHEET NO. 70)

RIDGE AVENUE
MATCH LINE STA. 180+00
(SEE SHEET NO. 72)

LEGEND
(XX.XX) EXISTING ELEVATION
XX.XX PROPOSED ELEVATION

RIDGE AVENUE
MATCH LINE STA. 175+00
(SEE SHEET NO. 70)

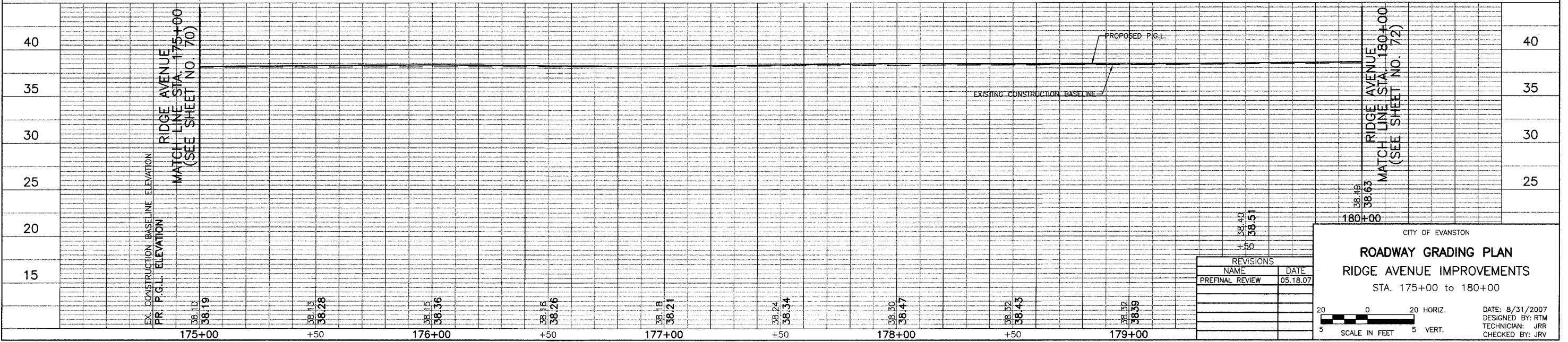
RIDGE AVENUE
MATCH LINE STA. 180+00
(SEE SHEET NO. 72)

EXISTING RIDGE AVENUE

PROPOSED RIDGE AVENUE

RIDGE AVENUE
MATCH LINE STA. 175+00
(SEE SHEET NO. 70)

RIDGE AVENUE
MATCH LINE STA. 180+00
(SEE SHEET NO. 72)



REVISIONS	
NAME	DATE
PREFINAL REVIEW	05.18.07

CITY OF EVANSTON
ROADWAY GRADING PLAN
RIDGE AVENUE IMPROVEMENTS
STA. 175+00 to 180+00

DATE: 8/31/2007
DESIGNED BY: RTM
TECHNICIAN: JRR
CHECKED BY: JRV

SCALE IN FEET: 5 HORIZ. 20 VERT.