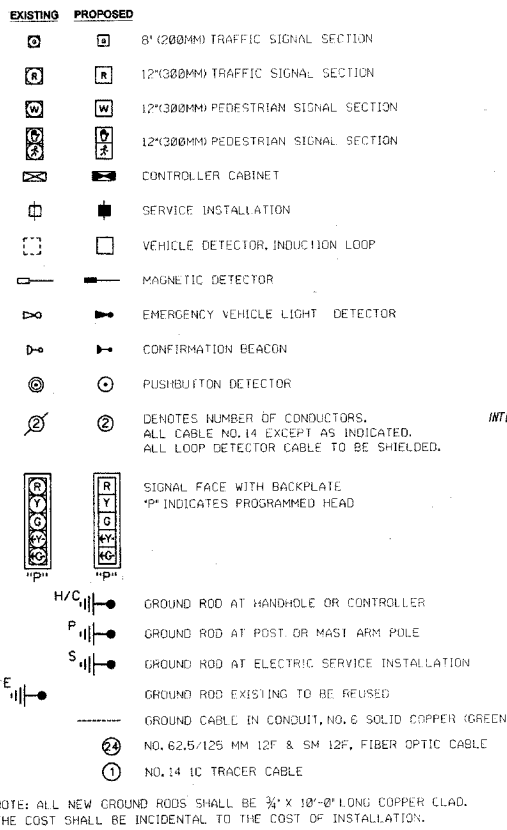


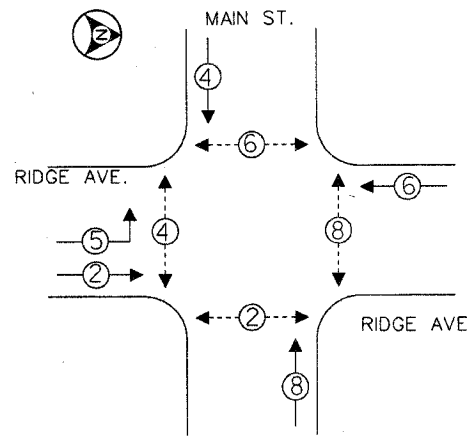
**SCHEDULE OF QUANTITIES**

QTY	UNIT	ITEM DESCRIPTION
316	FOOT	THERMOPLASTIC PAVEMENT MARKING-LINE 6"
82	FOOT	THERMOPLASTIC PAVEMENT MARKING-LINE 24"
84	SQ FT	THERMOPLASTIC PAVEMENT MARKING REMOVAL
1	EACH	SERVICE INSTALLATION, POLE MOUNTED
5	FOOT	CONDUIT IN TRENCH, 2 1/2" DIA., GALVANIZED STEEL
10	FOOT	CONDUIT IN TRENCH, 5" DIA., GALVANIZED STEEL
753	FOOT	CONDUIT PUSHED, 2" DIA., GALVANIZED STEEL
44	FOOT	CONDUIT PUSHED, 2 1/2" DIA., GALVANIZED STEEL
16	FOOT	CONDUIT PUSHED, 3" DIA., GALVANIZED STEEL
209	FOOT	CONDUIT PUSHED, 4" DIA., GALVANIZED STEEL
7	EACH	HANDHOLE
1	EACH	DOUBLE HANDHOLE
15	FOOT	TRENCH AND BACKFILL FOR ELECTRICAL WORK
1	EACH	FULL-ACTUATED CONTROLLER AND TYPE IV CABINET, SPECIAL
1	EACH	TRANSCEIVER - FIBER OPTIC
518	FOOT	ELECTRIC CABLE IN CONDUIT, GROUNDING, NO. 6 1C
477	FOOT	ELECTRIC CABLE IN CONDUIT, SIGNAL NO. 14 2C
1236	FOOT	ELECTRIC CABLE IN CONDUIT, SIGNAL NO. 14 3C
1007	FOOT	ELECTRIC CABLE IN CONDUIT, SIGNAL NO. 14 5C
394	FOOT	ELECTRIC CABLE IN CONDUIT, SIGNAL NO. 14 7C
1891	FOOT	ELECTRIC CABLE IN CONDUIT, LEAD-IN, NO. 14 1 PAIR
446	FOOT	ELECTRIC CABLE IN CONDUIT, NO. 20 3/C, TWISTED, SHIELDED
312	FOOT	ELECTRIC CABLE IN CONDUIT, SERVICE, NO. 6 2C
2	EACH	TRAFFIC SIGNAL POST, GALVANIZED STEEL 14 FT.
1	EACH	TRAFFIC SIGNAL POST, GALVANIZED STEEL 16 FT.
2	EACH	TRAFFIC SIGNAL POST, GALVANIZED STEEL 18 FT.
20	FOOT	CONCRETE FOUNDATION, TYPE A
4	FOOT	CONCRETE FOUNDATION, TYPE D
1	EACH	SIGNAL HEAD, LED, 1-FACE, 3-SECTION, BRACKET MOUNTED
9	EACH	INDUCTIVE LOOP DETECTOR
563	FOOT	DETECTOR LOOP, TYPE-1
2	EACH	LIGHT DETECTOR
1	EACH	LIGHT DETECTOR AMPLIFIER
4	EACH	PEDESTRIAN PUSH-BUTTON
1	EACH	TEMPORARY TRAFFIC SIGNAL INSTALLATION
1	EACH	REMOVE EXISTING TRAFFIC SIGNAL EQUIPMENT
2	EACH	REMOVE EXISTING HANDHOLE
5	EACH	REMOVE EXISTING CONCRETE FOUNDATION
2	EACH	SIGNAL HEAD, LED, 3-FACE, 3-SECTION, BRACKET MOUNTED
1	EACH	SIGNAL HEAD, LED, 2-FACE, 1-3 SECTION, 1-5 SECTION, BRACKET MOUNTED
1	EACH	SIGNAL HEAD, LED, 3-FACE, 2-3 SECTION, 1-5 SECTION, BRACKET MOUNTED
4	EACH	PEDESTRIAN SIGNAL HEAD, LED, 2-FACE, BRACKET MOUNTED
1	EACH	REMOVE EXISTING SERVICE INSTALLATION

**CABLE PLAN LEGEND**



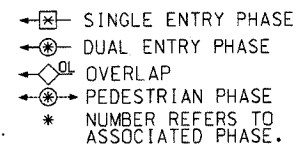
**PROPOSED CONTROLLER SEQUENCE**



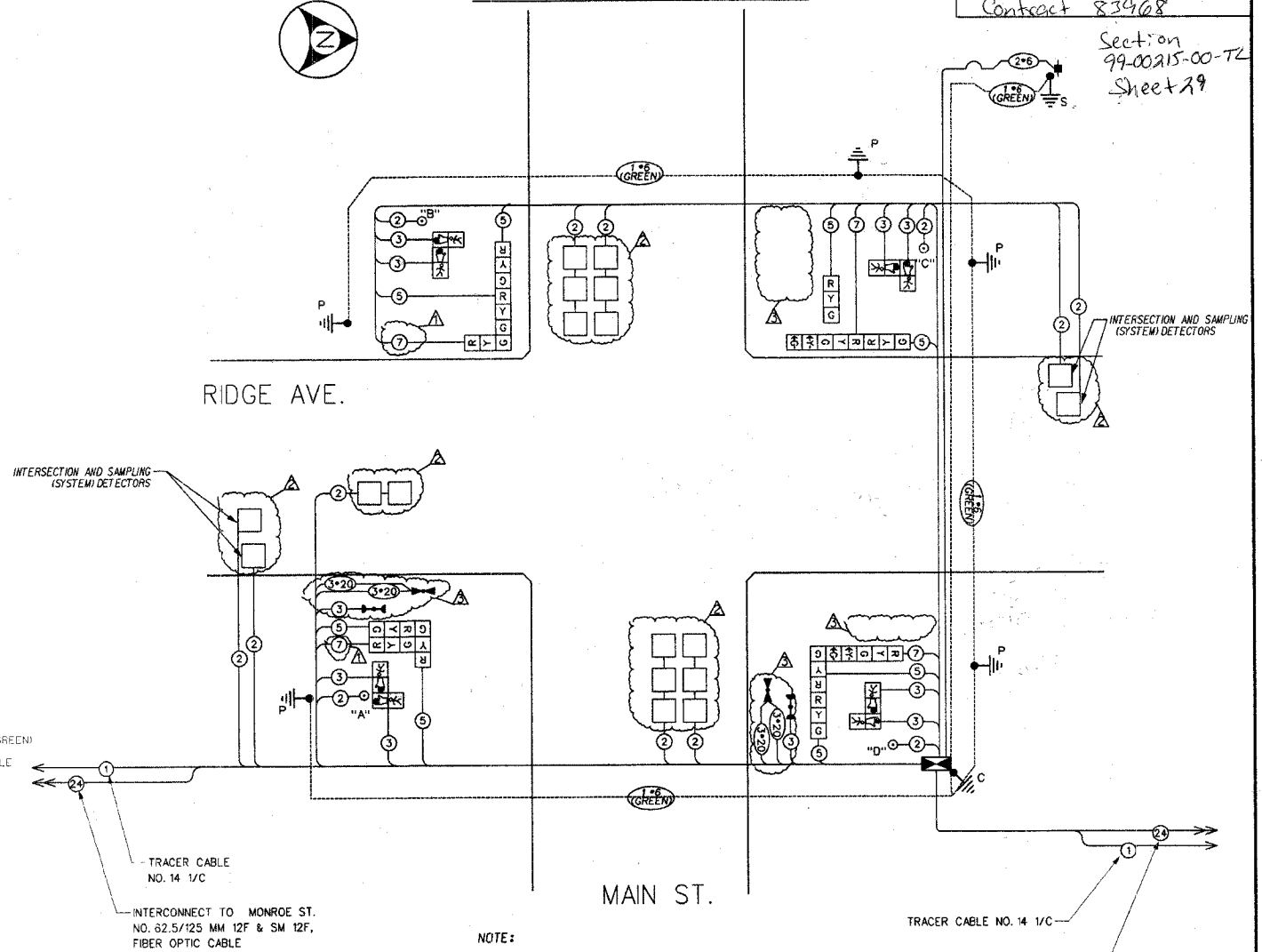
**PHASE DESIGNATION DIAGRAM**

NOTE: NO. 14 7C CABLE IS TO BE PROVIDED AT 3 SECTION SIGNAL HEADS AS NOTED

**LEGEND**



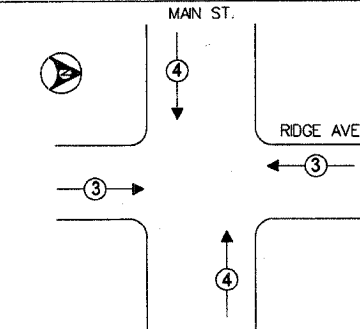
**PROPOSED CABLE PLAN**



NOTE:

- PUSH BUTTON "A" SHALL PLACE A CALL IN PHASES 2 AND 4
- PUSH BUTTON "B" SHALL PLACE A CALL IN PHASES 4 AND 6
- PUSH BUTTON "C" SHALL PLACE A CALL IN PHASES 6 AND 8
- PUSH BUTTON "D" SHALL PLACE A CALL IN PHASES 2 AND 8.

**PROPOSED EMERGENCY VEHICLE PREEMPTION SEQUENCE**



PROPOSED EMERGENCY VEHICLE PREEMPTORS		
EMERGENCY VEHICLE PREEMPTOR	3	4
MOVEMENT	←→	↑↓

I.D.O.T. TRAFFIC SIGNAL INSTALLATION ELECTRICAL SERVICE REQUIREMENTS				TOTAL WATTAGE	
TYPE	NO. OF LAMPS	WATTAGE	LED XX OPERATIONS		
SIGNAL (RED)	12	135	17	0.50	102
(YELLOW)	12	135	25	0.25	75
(GREEN)	12	135	15	0.25	45
ARROW	4	135	12	0.10	4.8
PED. SIGNAL	8	90	25	1.00	200
CONTROLLER	1	100	100	1.00	100
ILLUM. SIGN		84		0.05	
FLASHER				0.50	
ENERGY COSTS TO:				TOTAL =	526.8
ENERGY COSTS - BILLED TO: CITY OF EVANSTON (ADDRESS)					
ENERGY SUPPLY - CONTACT: MIKE LYNCH (847) 291-3329 COMPANY: COMED					

THE TRAFFIC SIGNAL CONTROL EQUIPMENT FOR THIS PROJECT SHALL BE "EAGLE" TO MATCH THE EXISTING ADJACENT SYSTEM.

FOUNDATION (DEPTH)	(FT.)	CABLE SLACK	(FT.)	VERTICAL	(FT.)
TYPE A - POST	4	HANDHOLE	6.5	ALL FOUNDATIONS	3.5
D - CONTROLLER	4	DOUBLE HANDHOLE	15	MAST ARM (L) POLE	20' ±1-2 =
E - M ARM POLE	24"	SIGNAL POST	2	BRACKET MOUNTED	13
	30"	CONTROLLER CAB.	1	PED. PUSHBUTTON	4
		FIBER OPTIC	13	ELECTRIC SERVICE	13.5
		ELECTRIC SERVICE	1	SERVICE TO GROUND	13.5
		GROUND CABLE	1	POST MOUNTED	6

REVISIONS		
NO.	DATE	DESCRIPTION
△	06-08-06	MISCELLANEOUS REVISION
△	11-15-06	DETECTOR LOOPS AND SYSTEM DETECTOR LOOPS TO BE INSTALLED BY OTHERS AT A LATER DATE
△	11-15-06	EVP REVISIONS

**CABLE PLAN, PHASE DESIGNATION DIAGRAM AND SCHEDULE OF QUANTITIES**

RIDGE AVE. @ MAIN ST. EVANSTON, ILLINOIS

CITY OF EVANSTON  
29\_cp.dgn  
**T29**  
SCALE: NOT TO SCALE  
DATE: APRIL 28, 2006  
DRAWN BY: DWS  
CHECKED BY: PAW