

Section
99-00215-00-72
Sheet 33

SCHEDULE OF QUANTITIES

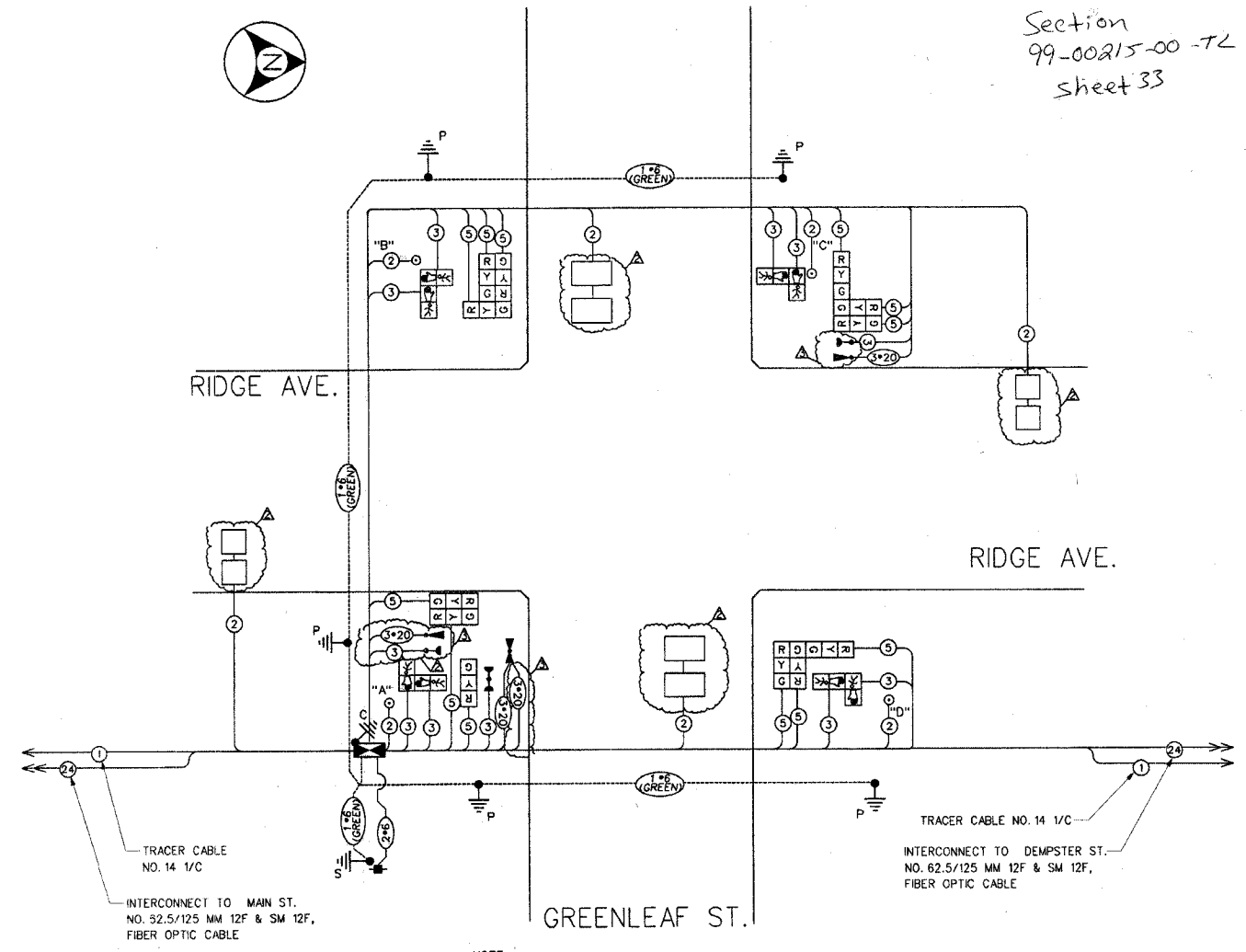
QTY	UNIT	ITEM DESCRIPTION
288	FOOT	THERMOPLASTIC PAVEMENT MARKING-LINE 6"
66	FOOT	THERMOPLASTIC PAVEMENT MARKING-LINE 24"
1	EACH	SERVICE INSTALLATION, POLE MOUNTED
5	FOOT	CONDUIT IN TRENCH, 3" DIA., GALVANIZED STEEL
10	FOOT	CONDUIT IN TRENCH, 5" DIA., GALVANIZED STEEL
605	FOOT	CONDUIT PUSHED, 2" DIA., GALVANIZED STEEL
32	FOOT	CONDUIT PUSHED, 2 1/2" DIA., GALVANIZED STEEL
13	FOOT	CONDUIT PUSHED, 3" DIA., GALVANIZED STEEL
180	FOOT	CONDUIT PUSHED, 4" DIA., GALVANIZED STEEL
5	EACH	HANDHOLE
1	EACH	DOUBLE HANDHOLE
15	FOOT	TRENCH AND BACKFILL FOR ELECTRICAL WORK
1	EACH	FULL-ACTUATED CONTROLLER AND TYPE IV CABINET, SPECIAL
1	EACH	TRANSCIVER - FIBER OPTIC
550	FOOT	ELECTRIC CABLE IN CONDUIT, GROUNDING, NO. 6 1C
481	FOOT	ELECTRIC CABLE IN CONDUIT, SIGNAL NO. 14 2C
1286	FOOT	ELECTRIC CABLE IN CONDUIT, SIGNAL NO. 14 3C
1503	FOOT	ELECTRIC CABLE IN CONDUIT, SIGNAL NO. 14 5C
917	FOOT	ELECTRIC CABLE IN CONDUIT, LEAD-IN, NO. 14 1 PAIR
309	FOOT	ELECTRIC CABLE IN CONDUIT, NO. 20 3/C, TWISTED, SHIELDED
201	FOOT	ELECTRIC CABLE IN CONDUIT, SERVICE, NO. 6 2C
2	EACH	TRAFFIC SIGNAL POST, GALVANIZED STEEL 14 FT.
1	EACH	TRAFFIC SIGNAL POST, GALVANIZED STEEL 16 FT.
3	EACH	TRAFFIC SIGNAL POST, GALVANIZED STEEL 18 FT.
20	FOOT	CONCRETE FOUNDATION, TYPE A
4	FOOT	CONCRETE FOUNDATION, TYPE D
1	EACH	SIGNAL HEAD, LED, 1-FACE, 3-SECTION, BRACKET MOUNTED
4	EACH	INDUCTIVE LOOP DETECTOR
254	FOOT	DETECTOR LOOP, TYPE 1
2	EACH	LIGHT DETECTOR
1	EACH	LIGHT DETECTOR AMPLIFIER
4	EACH	PEDESTRIAN PUSH-BUTTON
1	EACH	TEMPORARY TRAFFIC SIGNAL INSTALLATION
1	EACH	REMOVE EXISTING TRAFFIC SIGNAL EQUIPMENT
2	EACH	REMOVE EXISTING HANDHOLE
5	EACH	REMOVE EXISTING CONCRETE FOUNDATION
1	EACH	SIGNAL HEAD, LED, 2-FACE, 3-SECTION, BRACKET MOUNTED
3	EACH	SIGNAL HEAD, LED, 3-FACE, 3-SECTION, BRACKET MOUNTED
4	EACH	PEDESTRIAN SIGNAL HEAD, LED, 2-FACE, BRACKET MOUNTED
1	EACH	REMOVE EXISTING SERVICE INSTALLATION

CABLE PLAN LEGEND

EXISTING	PROPOSED	DESCRIPTION
□	□	8" (200MM) TRAFFIC SIGNAL SECTION
□	□	12" (300MM) TRAFFIC SIGNAL SECTION
□	□	12" (300MM) PEDESTRIAN SIGNAL SECTION
□	□	12" (300MM) PEDESTRIAN SIGNAL SECTION
□	□	CONTROLLER CABINET
□	□	SERVICE INSTALLATION
□	□	VEHICLE DETECTOR, INDUCTION LOOP
□	□	MAGNETIC DETECTOR
□	□	EMERGENCY VEHICLE LIGHT DETECTOR
□	□	CONFIRMATION BEACON
□	□	PUSHBUTTON DETECTOR
□	□	⊙ DENOTES NUMBER OF CONDUCTORS. ALL CABLE NO. 14 EXCEPT AS INDICATED. ALL LOOP DETECTOR CABLE TO BE SHIELDED.
□	□	□ SIGNAL FACE WITH BACKPLATE
□	□	⊙* INDICATES PROGRAMMED HEAD
□	□	H/C GROUND ROD AT HANDHOLE OR CONTROLLER
□	□	P GROUND ROD AT POST OR MAST ARM POLE
□	□	S GROUND ROD AT ELECTRIC SERVICE INSTALLATION
□	□	E GROUND ROD EXISTING TO BE REUSED
□	□	— GROUND CABLE IN CONDUIT, NO. 6 SOLID COPPER (GREEN)
□	□	⊙ NO. 62.5/125 MM 12F & SM 12F, FIBER OPTIC CABLE
□	□	⊙ NO. 14 1C TRACER CABLE

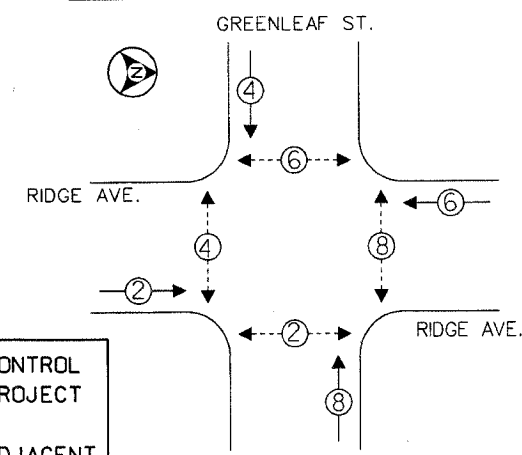
NOTE: ALL NEW GROUND RODS SHALL BE 3/4" X 12'-0" LONG COPPER CLAD. THE COST SHALL BE INCIDENTAL TO THE COST OF INSTALLATION.

PROPOSED CABLE PLAN

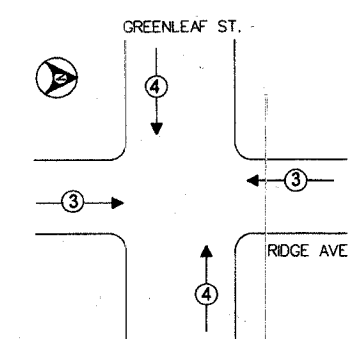


NOTE:
 • PUSH BUTTON "A" SHALL PLACE A CALL IN PHASES 2 AND 4
 • PUSH BUTTON "B" SHALL PLACE A CALL IN PHASES 4 AND 6
 • PUSH BUTTON "C" SHALL PLACE A CALL IN PHASES 6 AND 8
 • PUSH BUTTON "D" SHALL PLACE A CALL IN PHASES 2 AND 8

PROPOSED CONTROLLER SEQUENCE



PROPOSED EMERGENCY VEHICLE PREEMPTION SEQUENCE



PROPOSED EMERGENCY VEHICLE PREEMPTORS		
EMERGENCY VEHICLE PREEMPTOR	3	4
MOVEMENT	←→	↑↓

LEGEND

- SINGLE ENTRY PHASE
- DUAL ENTRY PHASE
- OVERLAP
- PEDESTRIAN PHASE
- * NUMBER REFERS TO ASSOCIATED PHASE

PHASE DESIGNATION DIAGRAM

THE TRAFFIC SIGNAL CONTROL EQUIPMENT FOR THIS PROJECT SHALL BE "EAGLE" TO MATCH THE EXISTING ADJACENT SYSTEM.

I.D.O.T. TRAFFIC SIGNAL INSTALLATION ELECTRICAL SERVICE REQUIREMENTS					TOTAL WATTAGE
TYPE	NO. OF LAMPS	INCAND.	LED	XX OPERATIONS	
SIGNAL (RED)	12	135	17	0.50	102
(YELLOW)	12	135	25	0.25	75
(GREEN)	12	135	15	0.25	45
ARROW		135	12	0.10	
PED. SIGNAL	8	90	25	1.00	200
CONTROLLER	1	100	100	1.00	100
ILLUM. SIGN		84		0.05	
FLASHER				0.50	
TOTAL =					522

ENERGY COSTS TO: CITY OF EVANSTON (ADDRESS)

ENERGY SUPPLY - CONTACT: MIKE LYNCH (847) 291-3329 COMPANY: COMED

FOUNDATION (DEPTH)	(FT.)	CABLE SLACK	(FT.)	VERTICAL	(FT.)
TYPE A - POST	4	HANDHOLE	6.5	ALL FOUNDATIONS	3.5
D - CONTROLLER	4	DOUBLE HANDHOLE	13	MAST ARM (L) POLE	20'+L-2 =
E - M ARM POLE		SIGNAL POST	2	BRACKET MOUNTED	13
	24"	CONTROLLER CAB.	1	PED. PUSHBUTTON	4
	30"	FIBER OPTIC	13	ELECTRIC SERVICE	13.5
		ELECTRIC SERVICE	1	SERVICE TO GROUND	13.5
		GROUND CABLE	1	POST MOUNTED	6

REVISIONS		
NO.	DATE	DESCRIPTION
06-08-06		MISCELLANEOUS REVISION
11-15-06		DETECTOR LOOPS AND SYSTEM DETECTOR LOOPS TO BE INSTALLED BY OTHERS AT A LATER DATE
11-15-06		EVP REVISIONS

CABLE PLAN, PHASE DESIGNATION DIAGRAM AND SCHEDULE OF QUANTITIES

RIDGE AVE. @ GREENLEAF ST.
EVANSTON, ILLINOIS

CITY OF EVANSTON
33_cp.dgn

T33

SCALE: NOT TO SCALE
DATE: APRIL 28, 2006

DRAWN BY: DWS
CHECKED BY: PAW