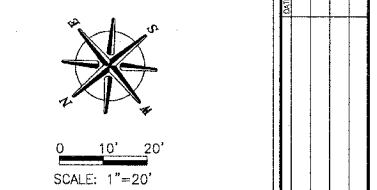
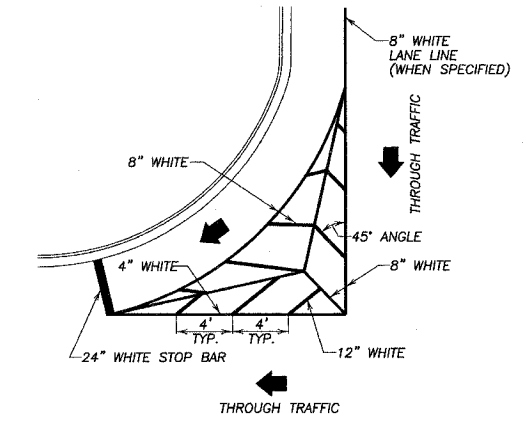
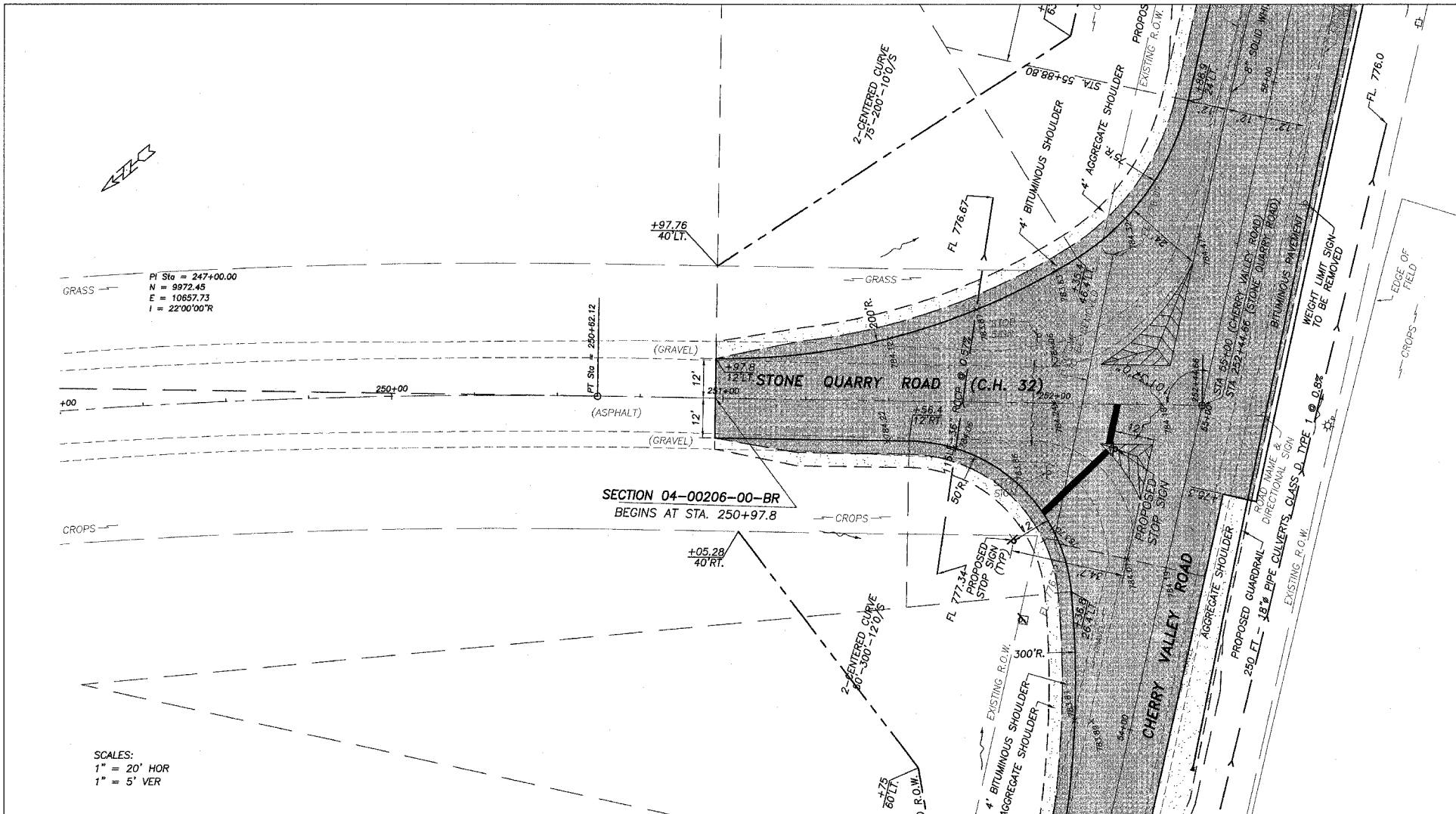


FAS ROUTE NO.	SEC	COUNTY	TOTAL SHEETS	SHEET NO.
—	*	DEKALB	21	7

ILLINOIS PROJECT BRS-1122(107)  
 \* 04-00206-00-BR  
 CONTRACT NO. 87316



**EXISTING STRUCTURE (SN)**  
 INCLUDES A SINGLE SPAN REINFORCED CONCRETE CURVED BOX FLAT SLAB 0' SKEW 32'-6" BK-BK ABUTTS.



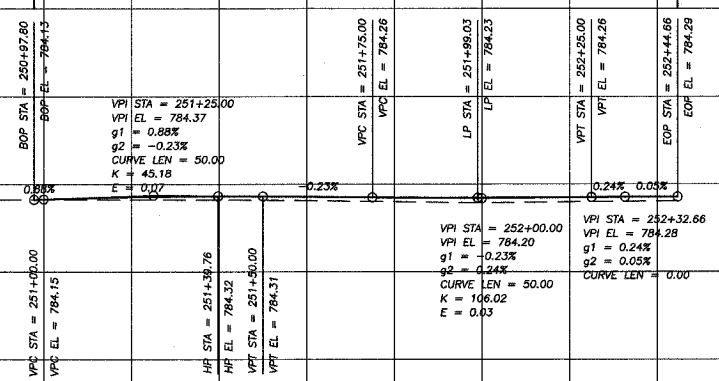
TYPICAL MARKING FOR PAINTED ISLANDS

SCALES:  
 1" = 20' HOR  
 1" = 5' VER

Station	795	790	785	780	775	770	765	760
249+00								
9+50								
250+00								
0+50								
251+00								
1+50								
252+00								
2+50								
253+00								
3+50								
254+00								
4+50								
255+00								

EARTH EXCAVATION  
 EMBANKMENT (IN PLACE)  
 FURNISHED EXCAVATION

80 CU.YDS.  
 580 CU.YDS.  
 520 CU.YDS.



SECTION 04-00206-00  
 C.H. 32 (STONE QUARRY ROAD)  
 DEKALB COUNTY

REVISED 09/21/2007

656 TIMBER CREEK ROAD - P.O. BOX 486 - DIXON, IL 61021 - 815-288-2261  
 28 E. WAGON - SUITE 3 - PRINCETON, IL 61356 - 815-879-4731  
 1778 WEST STATE ST. - STAMFORD, IL 60178 - 815-685-5008  
 804 FREEMONT RD. - STERLING, IL 61081 - (815) 626-4428  
 E-MAIL: info@wendlerengineering.com

**WENDLER ENGINEERING SERVICES, INC.**  
 Structural & Civil Engineers—Land Surveying—Environmental Services  
 Illinois Professional Design Firm No. 184-000848



1968 - 2007  
 AFTER  
**39**  
 YEARS  
 WE'RE STILL  
 "Turning Ideas...  
 — Into Reality!"