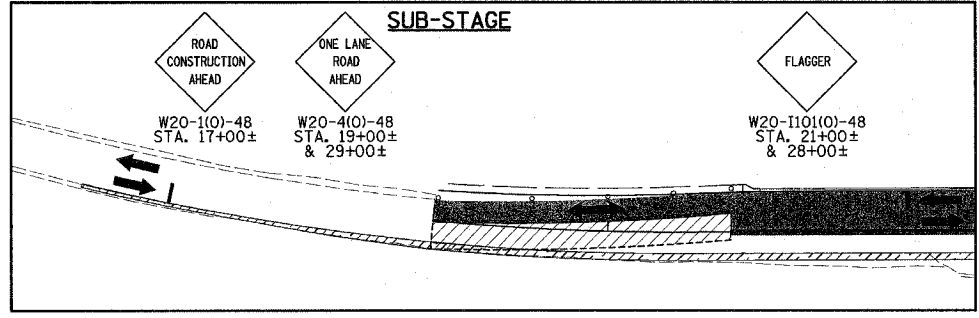
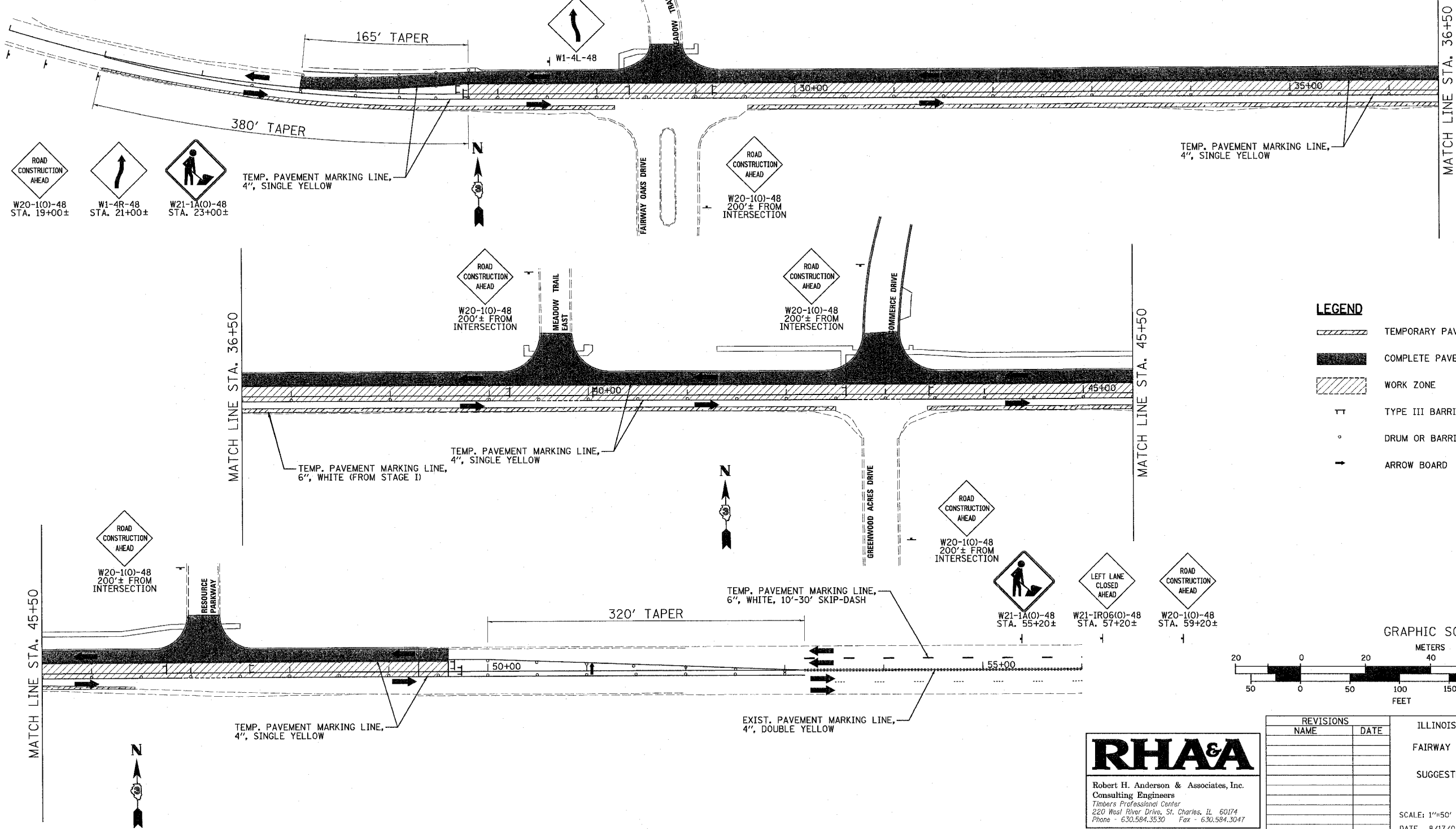


F.A.I. RTE.	SECTION	COUNTY	TOTAL SHEETS	SHEET NO.
5355	04-00167-00-WR	DEKALB	62	15
STA.		TO STA.		
FED. ROAD DIST. NO.		ILLINOIS FED. AID PROJECT		



M.O.T. NOTES

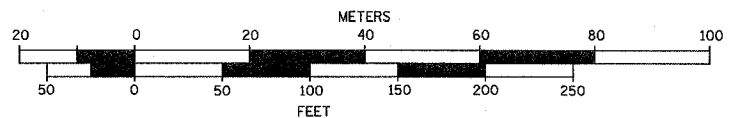
1. CONTRACTOR SHALL KEEP THE SIDE STREETS OPEN AT ALL TIMES BY UTILIZING SUB-STAGES NOT SHOWN.
2. COMMERCE DRIVE AND OTHER SIDE STREET M.O.T. SHALL BE IN ACCORDANCE WITH THE APPLICABLE STANDARDS FOR URBAN LANE CLOSURES.
3. STOP BAR PAVEMENT MARKINGS (2' WHITE) (ON SIDE STREETS) ARE NOT SHOWN. LOCATIONS TO BE DETERMINED IN FIELD AS APPROVED BY THE ENGINEER.



LEGEND

- TEMPORARY PAVEMENT WIDENING
- COMPLETE PAVEMENT
- WORK ZONE
- TYPE III BARRICADE
- DRUM OR BARRICADE
- ARROW BOARD

GRAPHIC SCALE



REVISIONS	
NAME	DATE

ILLINOIS DEPARTMENT OF TRANSPORTATION
 BETHANY ROAD WIDENING
 FAIRWAY OAKS DRIVE TO RESOURCE PARKWAY
 CITY OF DEKALB
 SUGGESTED MAINTENANCE OF TRAFFIC PLAN
 STAGE II

SCALE: 1"=50'
 DATE: 8/17/07
 DRAWN BY: KMA
 CHECKED BY: BP

RH&A
 Robert H. Anderson & Associates, Inc.
 Consulting Engineers
 Timbers Professional Center
 220 West River Drive, St. Charles, IL 60174
 Phone - 630.584.3530 Fax - 630.584.3047

PLT DATE = 8/16/2007
 FILE NAME = H:\Dekalb\57283-BethanyRd\Civil\Tplan\Sheet\MT903.dgn
 PLOT SCALE = 1"=50'
 USER NAME = JUSER