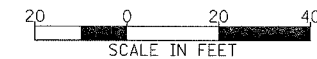
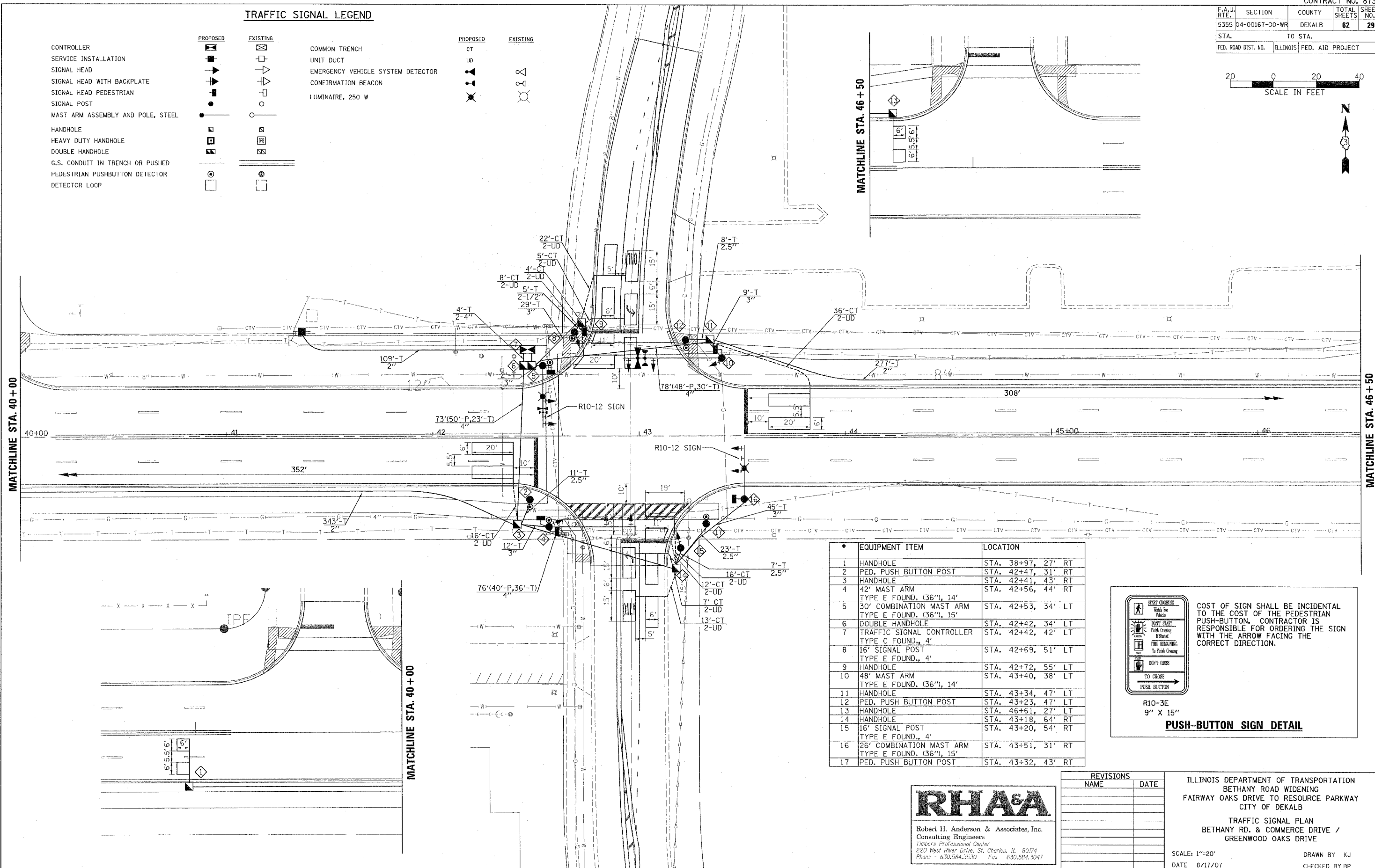


| F.A.U. RTE. | SECTION | COUNTY | TOTAL SHEETS | SHEET NO. |
|---------------------|----------------|------------------|--------------|-----------|
| 5355 | 04-00167-00-WR | DEKALB | 62 | 29 |
| STA. | | TO STA. | | |
| FED. ROAD DIST. NO. | ILLINOIS | FED. AID PROJECT | | |



TRAFFIC SIGNAL LEGEND

| | | | |
|-----------------------------------|-----------------|-----------------------------------|-----------------|
| PROPOSED | EXISTING | PROPOSED | EXISTING |
| CONTROLLER | [Symbol] | COMMON TRENCH | [Symbol] |
| SERVICE INSTALLATION | [Symbol] | UNIT DUCT | [Symbol] |
| SIGNAL HEAD | [Symbol] | EMERGENCY VEHICLE SYSTEM DETECTOR | [Symbol] |
| SIGNAL HEAD WITH BACKPLATE | [Symbol] | CONFIRMATION BEACON | [Symbol] |
| SIGNAL HEAD PEDESTRIAN | [Symbol] | LUMINAIRE, 250 W | [Symbol] |
| SIGNAL POST | [Symbol] | | |
| MAST ARM ASSEMBLY AND POLE, STEEL | [Symbol] | | |
| HANDHOLE | [Symbol] | | |
| HEAVY DUTY HANDHOLE | [Symbol] | | |
| DOUBLE HANDHOLE | [Symbol] | | |
| G.S. CONDUIT IN TRENCH OR PUSHED | [Symbol] | | |
| PEDESTRIAN PUSHBUTTON DETECTOR | [Symbol] | | |
| DETECTOR LOOP | [Symbol] | | |



| # | EQUIPMENT ITEM | LOCATION |
|----|--|--------------------|
| 1 | HANDHOLE | STA. 38+97, 27' RT |
| 2 | PED. PUSH BUTTON POST | STA. 42+47, 31' RT |
| 3 | HANDHOLE | STA. 42+41, 43' RT |
| 4 | 42' MAST ARM TYPE E FOUND. (36"), 14' | STA. 42+56, 44' RT |
| 5 | 30' COMBINATION MAST ARM TYPE E FOUND. (36"), 15' | STA. 42+53, 34' LT |
| 6 | DOUBLE HANDHOLE | STA. 42+42, 34' LT |
| 7 | TRAFFIC SIGNAL CONTROLLER TYPE C FOUND., 4' | STA. 42+42, 42' LT |
| 8 | 16' SIGNAL POST TYPE E FOUND., 4' | STA. 42+69, 51' LT |
| 9 | HANDHOLE | STA. 42+72, 55' LT |
| 10 | 48' MAST ARM TYPE E FOUND. (36"), 14' | STA. 43+40, 38' LT |
| 11 | HANDHOLE | STA. 43+34, 47' LT |
| 12 | PED. PUSH BUTTON POST | STA. 43+23, 47' LT |
| 13 | HANDHOLE | STA. 46+61, 27' LT |
| 14 | HANDHOLE | STA. 43+18, 64' RT |
| 15 | 16' SIGNAL POST TYPE E FOUND., 4' | STA. 43+20, 54' RT |
| 16 | 26' COMBINATION MAST ARM TYPE E FOUND. (36"), 15' | STA. 43+51, 31' RT |
| 17 | PED. PUSH BUTTON POST | STA. 43+32, 43' RT |

RHA&A
 Robert H. Anderson & Associates, Inc.
 Consulting Engineers
 Timbers Professional Center
 220 West River Drive, St. Charles, IL 60174
 Phone - 630.584.3530 Fax - 630.584.3047

| REVISIONS | |
|-----------|------|
| NAME | DATE |
| | |
| | |
| | |
| | |

ILLINOIS DEPARTMENT OF TRANSPORTATION
 BETHANY ROAD WIDENING
 FAIRWAY OAKS DRIVE TO RESOURCE PARKWAY
 CITY OF DEKALB

TRAFFIC SIGNAL PLAN
 BETHANY RD. & COMMERCE DRIVE /
 GREENWOOD OAKS DRIVE

SCALE: 1"=20'
 DATE 8/17/07

DRAWN BY KJ
 CHECKED BY BP

PLOT DATE = 8/16/2007
 FILE NAME = H:\Dakab\157203-BethanyRd\Drawn\Drawn\TSM.dgn
 USER = USER