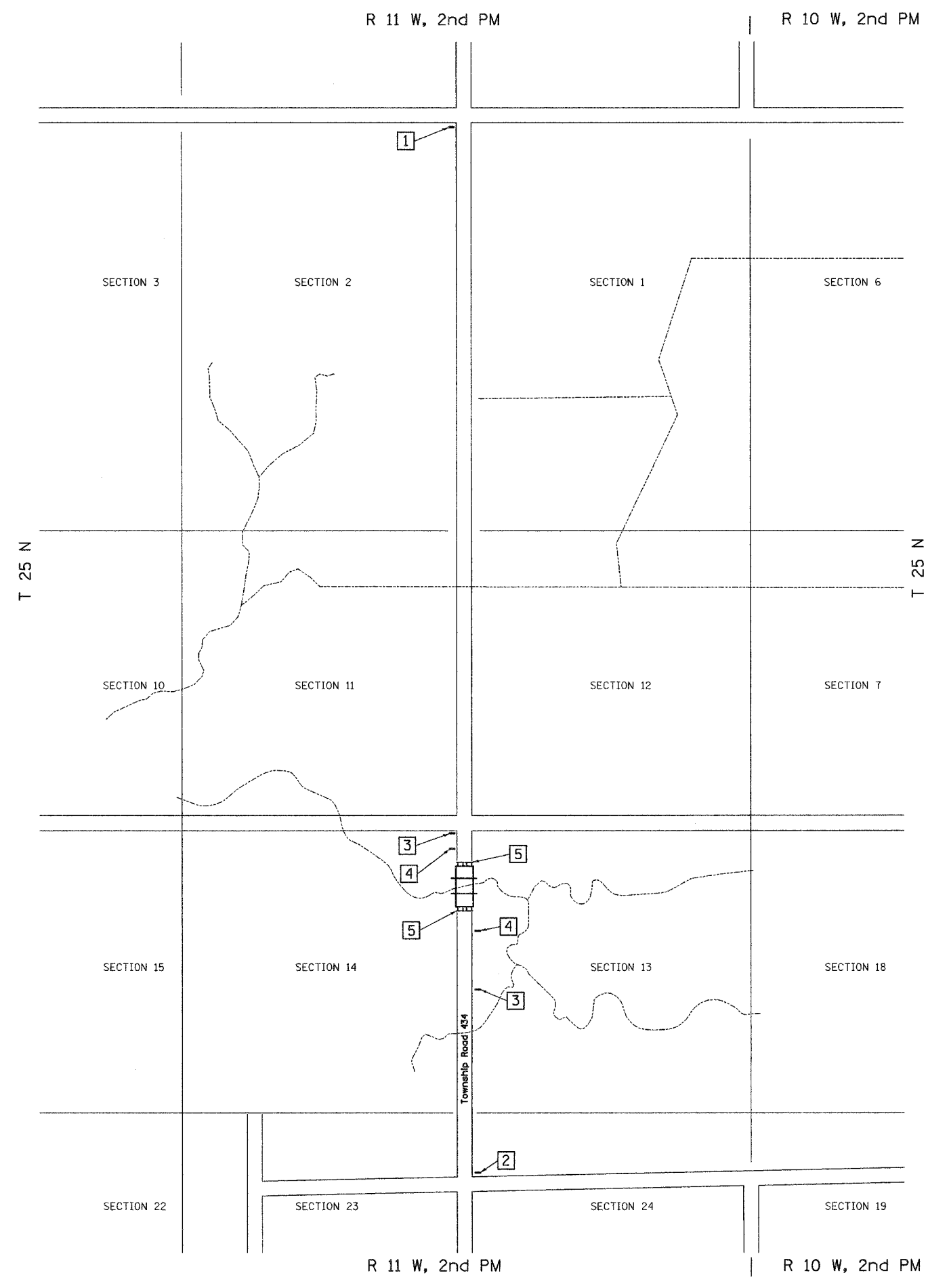


ROUTE NO.	SECTION	COUNTY	TOTAL SHEETS	SHEET NO.
TR 434	*	IROQUOIS	23	4
FED. ROAD DIST. NO. 7	ILLINOIS	PROJECT BROS-075(131)		
* 06-26102-01-BR			CONTRACT #87356	



- 1

ROAD CLOSED  
2 1/2 MILES AHEAD  
LOCAL TRAFFIC ONLY

ROAD CLOSED  
2 1/2 MILES AHEAD  
LOCAL TRAFFIC ONLY

R11-3
- 2

ROAD CLOSED  
1 MILE AHEAD  
LOCAL TRAFFIC ONLY

ROAD CLOSED  
1 MILE AHEAD  
LOCAL TRAFFIC ONLY

R11-3
- 3

ROAD CLOSED  
AHEAD

ROAD CLOSED  
AHEAD

W20-3
- 4

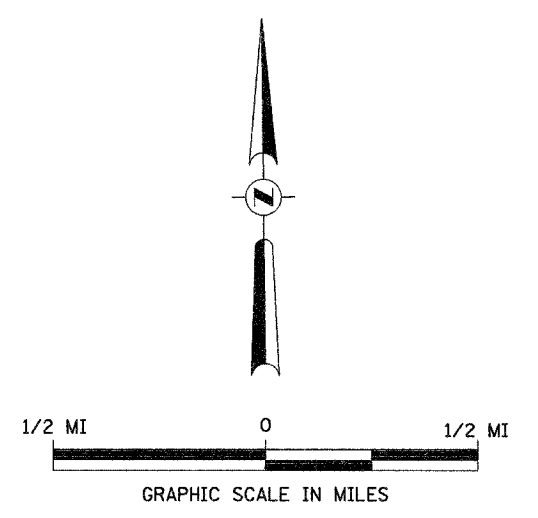
ROAD CLOSED  
500 FT

ROAD CLOSED  
500 FT

W20-3
- 5

TYPE III BARRICADES

SEE STANDARD BLR 21  
AND SPECIAL PROVISIONS



**TRAFFIC CONTROL PLAN**  
**T.R. 434 OVER MUD CREEK**  
**SECTION 06-26102-01-BR**  
**IROQUOIS COUNTY**  
**STATION 20+00.00**