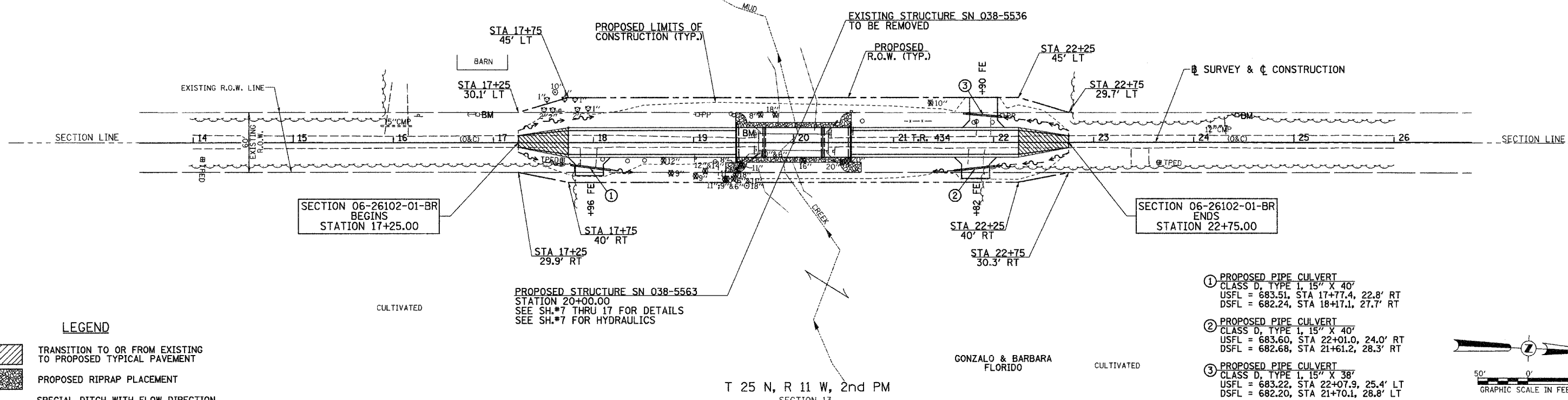
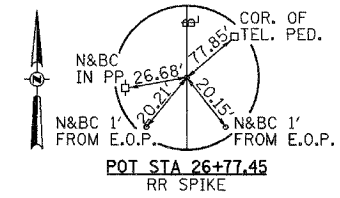
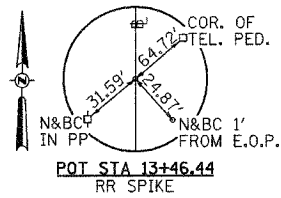


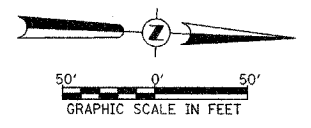
T 25 N, R 11 W, 2nd PM
SECTION 14

ROUTE NO.	SECTION	COUNTY	TOTAL SHEETS	SHEET NO.
TR 434	*	IROQUOIS	23	6
FED. ROAD DIST. NO. 7		ILLINOIS	PROJECT BROS-075(131)	
*06-26102-01-BR		CONTRACT #87356		



- LEGEND**
- TRANSITION TO OR FROM EXISTING TO PROPOSED TYPICAL PAVEMENT
 - PROPOSED RIPRAP PLACEMENT
 - SPECIAL DITCH WITH FLOW DIRECTION

- ① PROPOSED PIPE CULVERT
CLASS D, TYPE 1, 15" X 40'
USFL = 683.51, STA 17+77.4, 22.8' RT
DSFL = 682.24, STA 18+17.1, 27.7' RT
- ② PROPOSED PIPE CULVERT
CLASS D, TYPE 1, 15" X 40'
USFL = 683.60, STA 22+01.0, 24.0' RT
DSFL = 682.68, STA 21+61.2, 28.3' RT
- ③ PROPOSED PIPE CULVERT
CLASS D, TYPE 1, 15" X 38'
USFL = 683.22, STA 22+07.9, 25.4' LT
DSFL = 682.20, STA 21+70.1, 28.8' LT



T 25 N, R 11 W, 2nd PM
SECTION 13

