

**STATE OF ILLINOIS
DEPARTMENT OF TRANSPORTATION
PLANS FOR PROPOSED
HIGHWAY BRIDGE PROGRAM
IROQUOIS COUNTY**

ROUTE NO.	SECTION	COUNTY	TOTAL SHEETS	SHEET
TR 434	*	IROQUOIS	23	1
FED. ROAD DIST. NO. 7		ILLINOIS	PROJECT BROS-075(131)	
* 06-26102-01-BR		CONTRACT #87356		

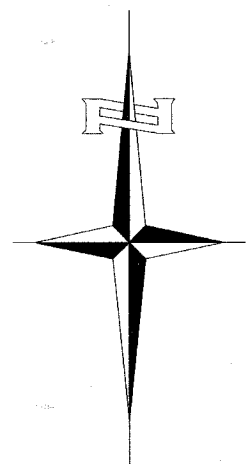
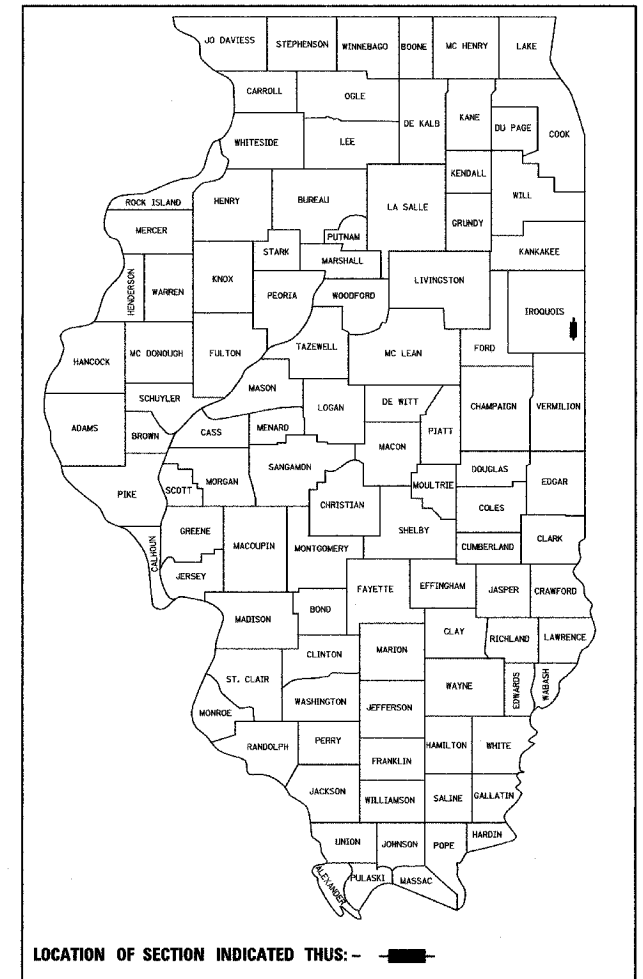
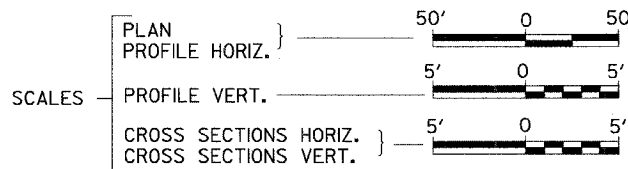
INDEX OF SHEETS

SHEET NO.	DESCRIPTION
1.	COVER SHEET
2.	GENERAL NOTES, DETAILS, AND TYPICAL SECTIONS
3.	SUMMARY OF QUANTITIES AND SCHEDULES OF QUANTITIES
4.	TRAFFIC CONTROL PLAN
5.	EROSION CONTROL PLAN
6.	PLAN AND PROFILE
7.-17.	STRUCTURE PLANS
18.-23.	CROSS SECTIONS

**STOCKLAND ROAD DISTRICT 06-26102-01-BR
TOWNSHIP ROAD 434 OVER MUD CREEK
PROJECT NO. BROS-075(131)
JOB NUMBER C-93-072-07**

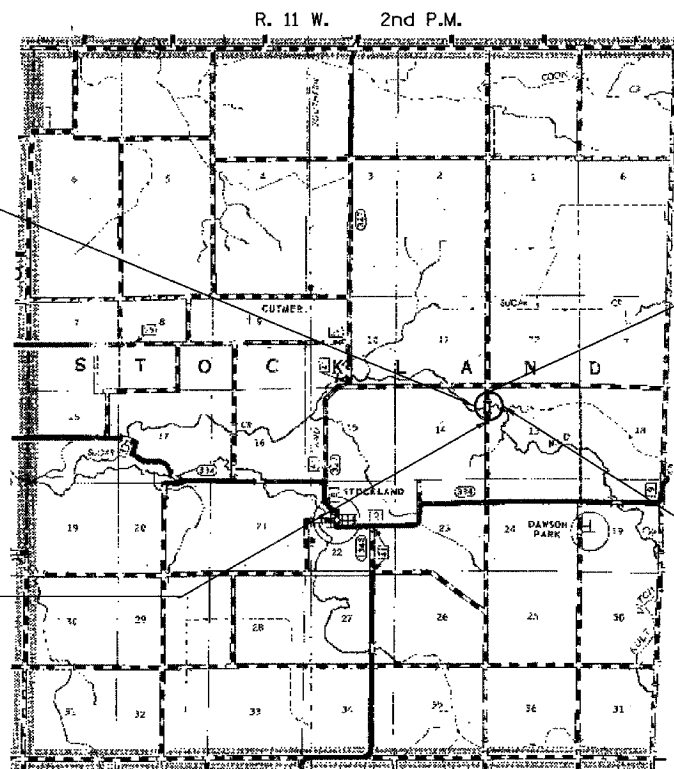
REQUIRED HIGHWAY STANDARDS

- 000001-04
- 280001-03
- 515001-02
- 635006-02
- 702001-06
- BLR-21-6



PROPOSED STRUCTURE NO. 038-5563
THREE SPAN 17" & 27" P.P.C. DECK BEAM
STRUCTURE ON CONC. SPILL THRU
ABUTMENTS AND CONC. ENCASED PIERS,
116'-0" BK. TO BK. AND 30'-0" O. TO O.,
0° SKEW

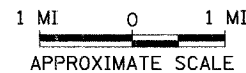
SECTION 06-26102-01-BR
BEGINS
STATION 17+25.00



SECTION 06-26102-01-BR
ENDS
STATION 22+75.00

EXISTING STRUCTURE 038-5536
SINGLE SPAN PRATT PONY TRUSS WITH TIMBER
PLANK DECK ON CONCRETE MASONRY ABUTMENTS
±70'-0" BK. TO BK., AND ±14'-2" O. TO O.,
0° SKEW (TO BE REMOVED)

LOCATION MAP



NET LENGTH OF PROJECT = 550.00 FEET = 0.104 MILES
DESIGN CLASSIFICATION: LOCAL ROAD (NON-URBAN)
DESIGN ADT = 129 (2007)
DESIGN SPEED = 30 MPH

UTILITY COMPANY
VERIZON
BLOOMINGTON, ILLINOIS

EASTERN ILLINOIS ELECTRIC COOPERATIVE
PAXTON, ILLINOIS

CALL J.U.L.I.E.
BEFORE YOU DIG
1-800-892-0123 OR 811

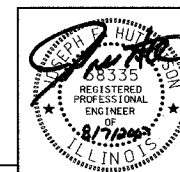
STOCKLAND ROAD DISTRICT

CONTRACT NO. 87356

Hutchison Engineering, Inc.
JACKSONVILLE ILLINOIS
SHOREWOOD ILLINOIS

2007

JOB#2465



George F. Egan
SIGNATURE

ENGINEERS SEAL

PLANS DESIGNED IN ACCORDANCE WITH BUREAU
OF LOCAL ROADS AND STREETS MANUAL GUIDELINES
FOR TWO LANE RURAL LOCAL ROADS - RECONSTRUCTION

APPROVED 8/22 2007

Ronald J. Sengalli
STOCKLAND ROAD DISTRICT HIGHWAY COMMISSIONER

APPROVED 8/22 2007

John V. Moore
IROQUOIS COUNTY ENGINEER

PASSED 9/10 2007

Donald R. Long
DISTRICT THREE ENGINEER OF
LOCAL ROADS & STREETS

Released For
Bld Based on
Limited Review 9/10 2007

George F. Egan
DEPUTY DIRECTOR OF HIGHWAYS,
REGION TWO ENGINEER

STATE OF ILLINOIS
DEPARTMENT OF TRANSPORTATION

ROUTE NO.	SECTION	COUNTY	TOTAL SHEETS	SHEET NO.
TR 434	*	IROQUOIS	23	2
FED. ROAD DIST. NO. 7		ILLINOIS	PROJECT BROS-075(131)	
* 06-26102-01-BR			CONTRACT #87356	

GENERAL NOTES

PLAN QUANTITIES FOR TREE REMOVAL HAVE BEEN BASED ON ALL TREES WITHIN THE LIMITS OF CONSTRUCTION. THIS QUANTITY MAY BE REVISED DURING CONSTRUCTION, AT THE DIRECTION OF THE ENGINEER, BY DELETING FROM THE TREE REMOVAL QUANTITIES, SUCH TREES THAT DO NOT INTERFERE WITH THE PROPOSED CONSTRUCTION.

THE REMOVAL OF EXISTING OIL & CHIP SURFACE AND GRAVEL OR CRUSHED STONE BASE COURSE WHICH MAY BE NECESSARY FOR THE CONSTRUCTION OF THE NEW BRIDGE SHALL BE REMOVED AS EARTH EXCAVATION AND NO COMPENSATION WILL BE ALLOWED FOR ADDITIONAL LABOR OR EQUIPMENT REQUIRED.

ALL WASTE OR UNDESIRABLE MATERIAL AS IDENTIFIED BY THE ENGINEER SHALL BE DISPOSED OF OUTSIDE THE LIMITS OF THE RIGHT OF WAY AT THE CONTRACTOR'S EXPENSE.

ALL EXISTING PRIVATELY OWNED UTILITIES REQUIRING ADJUSTMENT WILL BE MADE BY THE UTILITY COMPANY INVOLVED. WHERE NO PROVISIONS HAVE BEEN MADE FOR ADJUSTMENTS ON THE PLANS, NO ADDITIONAL COMPENSATION WILL BE ALLOWED DUE TO DELAYS OR INCONVENIENCES CAUSED BY THE SAID UTILITY ADJUSTMENTS.

THE PROFILE GRADE ELEVATIONS SHOWN ON THE PLAN AND PROFILE SHEETS AND IN THE STATION CROSS SECTIONS ARE TO THE TOP OF THE FINISHED SURFACE.

ALL EXISTING DRAINAGE STRUCTURES NOT BEING REMOVED BY THE CONTRACTOR THAT ARE DAMAGED DURING CONSTRUCTION SHALL BE REPLACED AT THE CONTRACTOR'S EXPENSE.

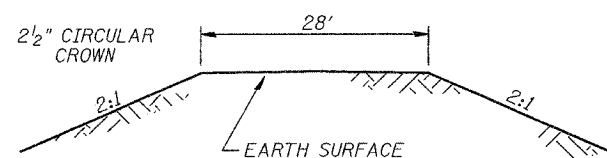
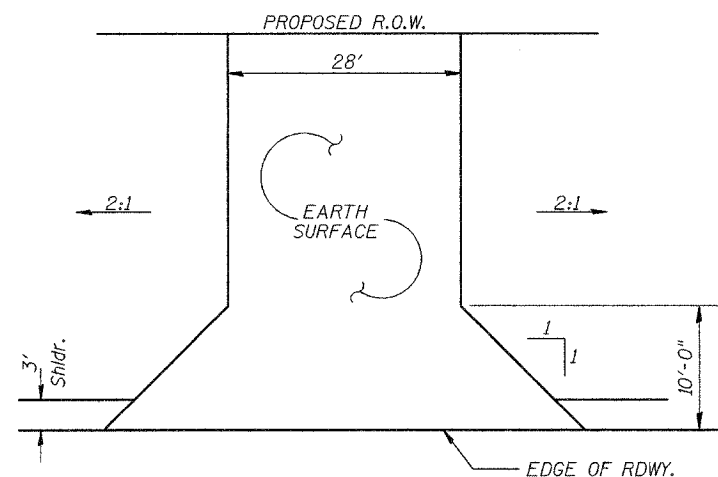
ANY REFERENCE TO STANDARDS THROUGHOUT THE PLANS SHALL BE INTERPRETED TO BE THE LATEST STANDARDS OF THE ILLINOIS DEPARTMENT OF TRANSPORTATION

THE LOCATION OF UNDERGROUND UTILITIES SHOWN ON THE PLANS REPRESENTS THE BEST KNOWLEDGE OF THE COUNTY. IT SHALL BE THE CONTRACTOR'S RESPONSIBILITY TO VERIFY LOCATIONS OF UNDERGROUND INSTALLATIONS BEFORE STARTING CONSTRUCTION OPERATIONS. THE CONTRACTOR SHALL INDEMNIFY THE COUNTY, ITS OFFICERS AND EMPLOYEES AGAINST ALL CLAIMS DUE TO DAMAGE TO CORPORATE OR PRIVATE PROPERTY RESULTING FROM HIS CONSTRUCTION OPERATIONS AS DESCRIBED IN ARTICLES 107.20 AND 107.26 OF THE STANDARD SPECIFICATIONS.

THE CONTRACTOR MAY BE REQUIRED TO CONDUCT SOME OF HIS GRADING AND TRENCHING OPERATIONS AROUND TRANSMISSION POLES AND UNDER TRANSMISSION LINES. THE ADDED COST OF SO DOING SHALL BE INCLUDED IN THE COST OF EARTH EXCAVATION.

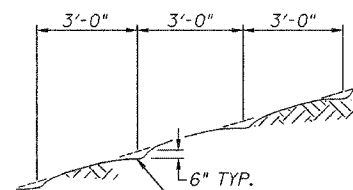
WHERE SECTION OR SUBSECTION MONUMENTS ARE ENCOUNTERED, THE ENGINEER SHALL BE NOTIFIED BEFORE SUCH MONUMENTS ARE REMOVED. THE CONTRACTOR SHALL PROTECT AND PRESERVE PROPERTY MARKERS UNTIL THE OWNER, AN AUTHORIZED SURVEYOR, OR AGENT, HAS WITNESSED OR OTHERWISE REFERENCED THEIR LOCATION.

ALL ELEVATIONS SHOWN REFER TO AN U.S.G.S. MEAN SEA LEVEL DATUM.



PROPOSED ENTRANCES

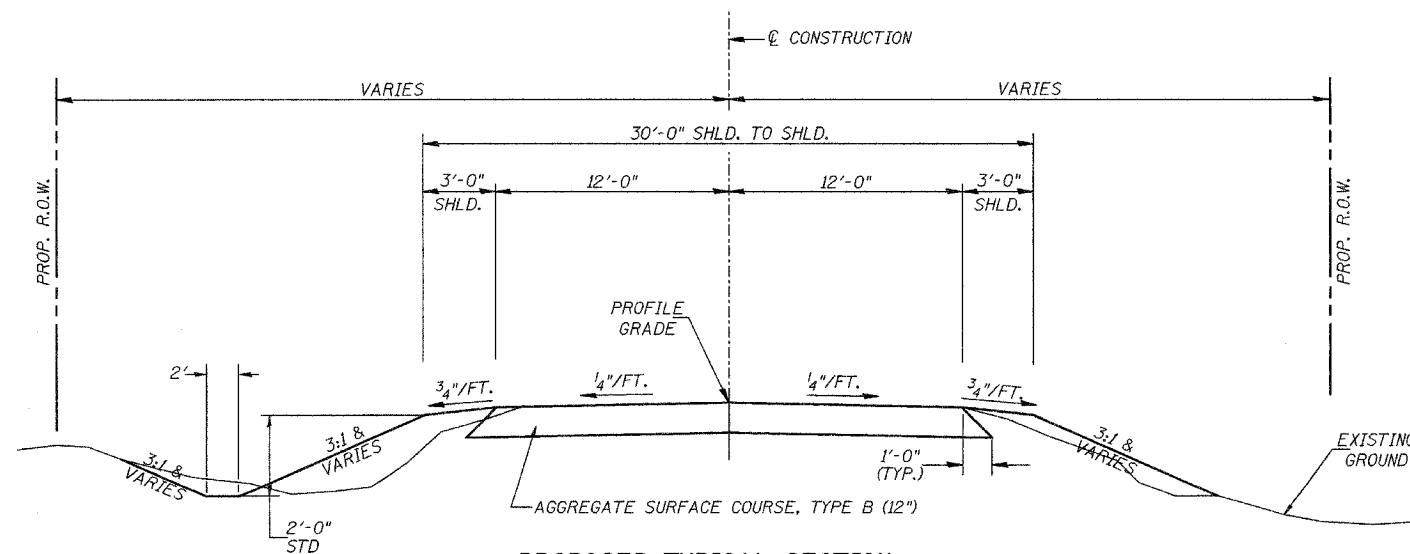
STA 17+96 RT
STA 21+82 RT
STA 21+90 LT



6" DEEP TRENCHES APPROXIMATELY 3'-0" C-C PARALLEL TO THE CONTOUR LINES OF THE FILL.

NOTE: ALL SLOPES 3:1 OR STEEPER AND GREATER THAN 5' IN HEIGHT SHALL BE CONTOUR PLOWED AS SHOWN IN DETAIL. COST SHALL BE INCLUDED WITH SEEDING, CLASS 2 (SPECIAL).

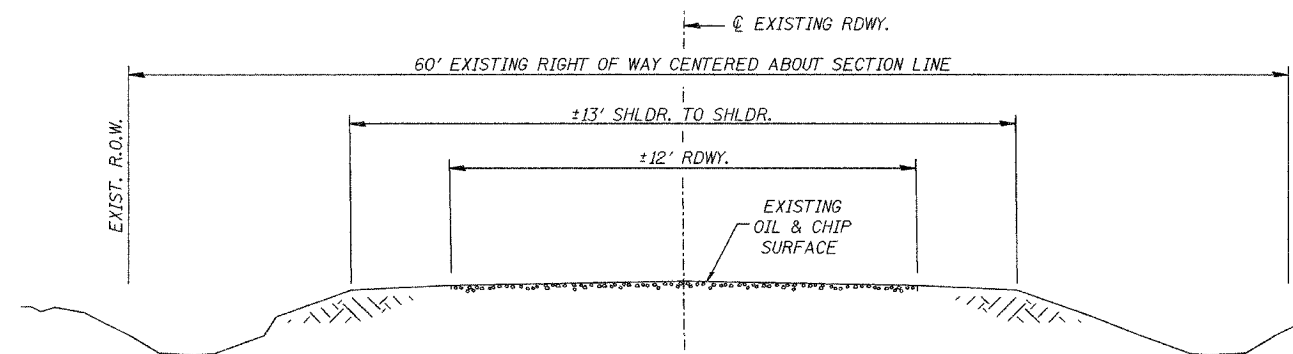
DETAIL OF CONTOUR PLOWING



PROPOSED TYPICAL SECTION

STA. 17+25.00 TO STA. 19+42.00
STA. 20+58.00 TO STA. 22+75.00
EXCEPT TRANSITIONS

BRIDGE OMISSION
STA. 19+42.00 TO STA. 20+58.00



EXISTING TYPICAL SECTION

SUMMARY OF QUANTITIES

CODE NO.	ITEM	UNIT	QUANTITY
20100110	TREE REMOVAL (6 TO 15 UNITS DIAMETER)	UNIT	163
20100210	TREE REMOVAL (OVER 15 UNITS DIAMETER)	UNIT	92
20200100	EARTH EXCAVATION	CU YD	300
20300100	CHANNEL EXCAVATION	CU YD	725
20400800	FURNISHED EXCAVATION	CU YD	960
25001000	SEEDING, CLASS 2 (SPECIAL)	ACRE	0.7
25100630	EROSION CONTROL BLANKET	SQ YD	141
28000300	TEMPORARY DITCH CHECKS	EACH	6
28000400	PERIMETER EROSION BARRIER	FOOT	650
28000500	INLET AND PIPE PROTECTION	EACH	3
28100209	STONE RIPRAP, CLASS A5	TON	705
28200200	FILTER FABRIC	SQ YD	680
40200800	AGGREGATE SURFACE COURSE, TYPE B	TON	743
50100100	REMOVAL OF EXISTING STRUCTURES	EACH	1
50200100	STRUCTURE EXCAVATION	CU YD	70
50300225	CONCRETE STRUCTURES	CU YD	98.1
50300280	CONCRETE ENCASEMENT	CU YD	7.8
50400305	PRECAST PRESTRESSED CONCRETE DECK BEAMS (17" DEPTH)	SO FT	1,650
50400505	PRECAST PRESTRESSED CONCRETE DECK BEAMS (27" DEPTH)	SQ FT	1,770
50800105	REINFORCEMENT BARS	POUND	8,940
50900205	STEEL RAILING, TYPE S-1	FOOT	232
51201005	FURNISHING METAL SHELL PILES 12"	FOOT	678
51202305	DRIVING PILES	FOOT	678
51203200	TEST PILE METAL SHELLS	EACH	2
51204650	PILE SHOES	EACH	22
51500100	NAME PLATES	EACH	1
54200220	PIPE CULVERTS, CLASS D, TYPE 1 15"	FOOT	118
67100100	MOBILIZATION	L SUM	1
78201000	TERMINAL MARKER - DIRECT APPLIED	EACH	4
X5020501	UNDERWATER STRUCTURE EXCAVATION PROTECTION, LOCATION 1	EACH	1
X5020502	UNDERWATER STRUCTURE EXCAVATION PROTECTION, LOCATION 2	EACH	1

① SEE SPECIAL PROVISIONS

CONSTRUCTION CODE TYPE: X080-2A

EARTHWORK SUMMARY

STATION TO STATION	EARTH EXCAVATION	CHANNEL EXCAVATION	STRUCTURE EXCAVATION	FILL	WASTE (SHORTAGE)
	CU YD	CU YD	CU YD	CU YD	CU YD
RDWY 17+25.00 - 19+42.00	81			514	(453)
RDWY 20+58.00 - 22+75.00	217			668	(505)
CHANNEL		724			
STRUCTURE			71		
TOTAL	298	724	71	1,182	(958)
USE	300	725	70	-	(960)

(@ 25% SHRINKAGE)

TREE REMOVAL

STATION	OFFSET	SIDE	6 TO 15 UNITS	OVER 15 UNITS
18+70	18'	RIGHT	12	
18+77	31'	RIGHT	9	
19+02	34'	RIGHT	9	
19+12	29'	RIGHT	12	
19+12	29'	RIGHT	14	
19+31	37'	RIGHT	11	
19+31	37'	RIGHT	9	
19+31	37'	RIGHT	6	
19+33	36'	RIGHT	11	
19+40	36'	RIGHT	6	
19+40	36'	RIGHT	11	
19+42	32'	RIGHT		18
19+44	28'	RIGHT	8	
19+46	22'	RIGHT	10	
19+46	22'	RIGHT	6	
19+49	23'	RIGHT	11	
19+67	28'	LEFT	8	
19+82	28'	LEFT		18
20+10	18'	RIGHT		16
20+49	20'	RIGHT		20
20+53	18'	RIGHT		20
21+37	40'	LEFT	10	
TOTAL			163	92

TEMPORARY DITCH CHECKS

STATION	SIDE	EACH
17+50	RIGHT	1
18+10	LEFT	1
18+25	RIGHT	1
21+50	RIGHT	1
22+35	RIGHT	1
22+40	LEFT	1
TOTAL		6

PERIMETER EROSION BARRIER

STATION TO STATION	SIDE	FOOT
17+75 - 18+15	RIGHT	40
18+10 - 19+40	LEFT	155
18+25 - 19+40	RIGHT	130
20+60 - 21+70	LEFT	130
20+60 - 21+50	RIGHT	110
21+60 - 22+00	RIGHT	40
21+70 - 22+10	LEFT	45
TOTAL		650

EROSION CONTROL BLANKET

STATION TO STATION	SIDE	WIDTH	LENGTH	AREA (SQ YD)
17+25 - 17+77	RIGHT	6'	52'	35
18+17 - 18+25	RIGHT	6'	8'	5
21+50 - 21+61	RIGHT	6'	11'	7
22+01 - 22+75	RIGHT	6'	74'	49
22+08 - 22+75	LEFT	6'	67'	45
TOTAL				141

INLET & PIPE PROTECTION

STATION	SIDE	EACH
17+77	RIGHT	1
22+01	RIGHT	1
22+08	LEFT	1
TOTAL		3

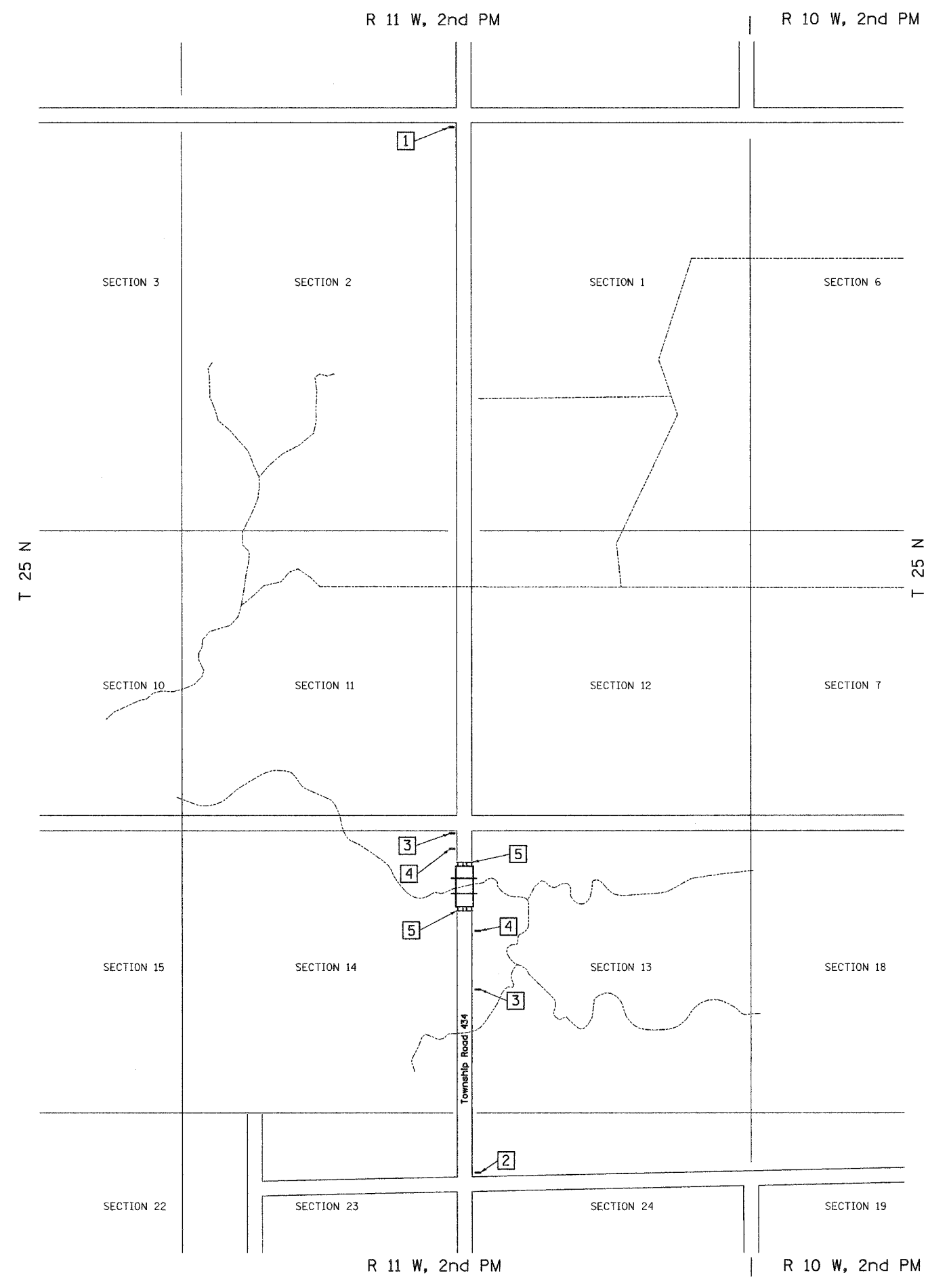
AGGREGATE SURFACE COURSE, TYPE B

STATION TO STATION	THICKNESS	WIDTH	LENGTH	TON
17+25.00 - 17+75.00	1.00'	18.90' AVG.	50.00'	66
17+75.00 - 19+42.00	1.00'	25.00'	167.00'	292
ABUTMENT BACKFILL - SEE SPECIAL PROVISIONS				
20+58.00 - 22+25.00	1.00'	25.00'	167.00'	292
22+25.00 - 22+75.00	1.00'	18.98' AVG.	50.00'	66
TOTAL				743

PIPE CULVERTS, CLASS D, TYPE 1 15"

STATION	SIDE	FOOT
17+96	RIGHT	40
21+82	RIGHT	40
21+90	LEFT	38
TOTAL		118

ROUTE NO.	SECTION	COUNTY	TOTAL SHEETS	SHEET NO.
TR 434	*	IROQUOIS	23	4
FED. ROAD DIST. NO. 7	ILLINOIS	PROJECT BROS-075(131)		
* 06-26102-01-BR			CONTRACT #87356	



- 1

ROAD CLOSED
2 1/2 MILES AHEAD
LOCAL TRAFFIC ONLY
R11-3

ROAD CLOSED
2 1/2 MILES AHEAD
LOCAL TRAFFIC ONLY
- 2

ROAD CLOSED
1 MILE AHEAD
LOCAL TRAFFIC ONLY
R11-3

ROAD CLOSED
1 MILE AHEAD
LOCAL TRAFFIC ONLY
- 3

ROAD
CLOSED
AHEAD

ROAD CLOSED
AHEAD

W20-3
- 4

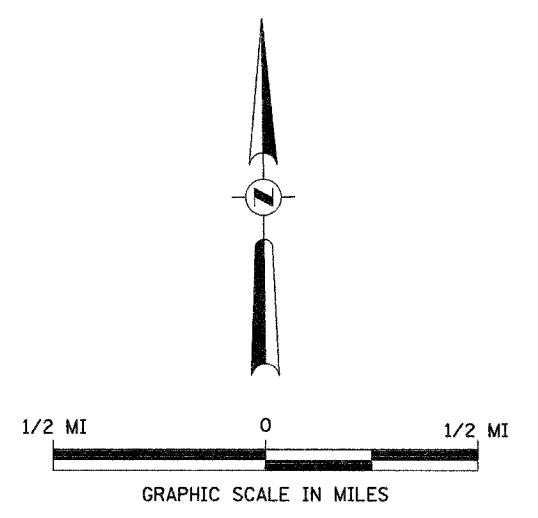
ROAD
CLOSED
500 FT

ROAD CLOSED
500 FT

W20-3
- 5

TYPE III BARRICADES

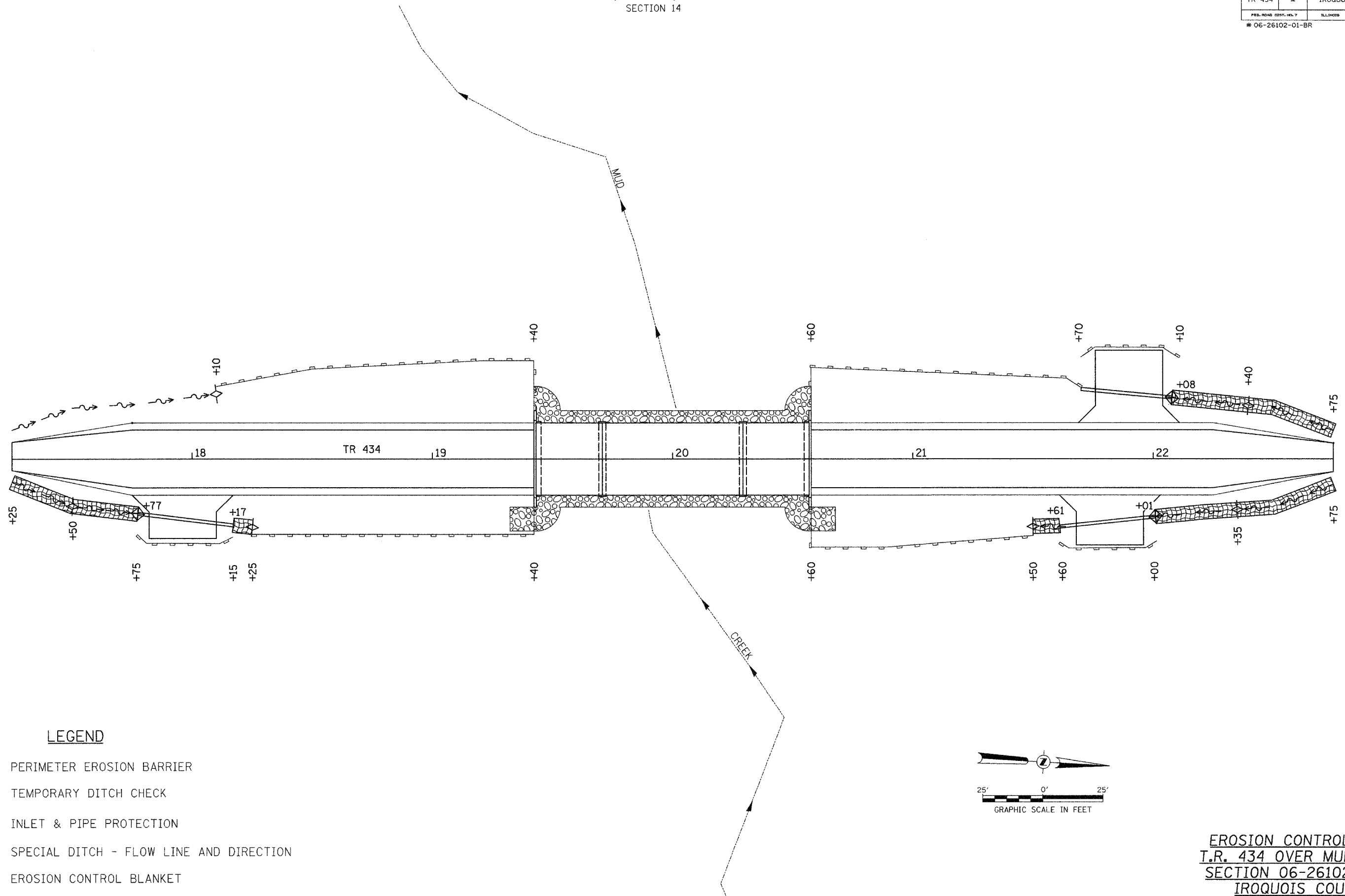
SEE STANDARD BLR 21
AND SPECIAL PROVISIONS



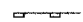


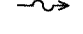
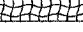

TRAFFIC CONTROL PLAN
T.R. 434 OVER MUD CREEK
SECTION 06-26102-01-BR
IROQUOIS COUNTY
STATION 20+00.00

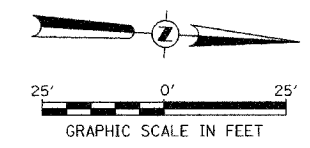
T 25 N, R 11 W, 2nd PM
SECTION 14

ROUTE NO.	SECTION	COUNTY	TOTAL SHEETS	SHEET NO.
TR 434	*	IROQUOIS	23	5
FED. ROAD DIST. NO. 7		ILLINOIS	PROJECT BROS-075(131)	
* 06-26102-01-BR			CONTRACT #87356	



LEGEND

-  PERIMETER EROSION BARRIER
-  TEMPORARY DITCH CHECK
-  INLET & PIPE PROTECTION
-  SPECIAL DITCH - FLOW LINE AND DIRECTION
-  EROSION CONTROL BLANKET
-  PROPOSED RIPRAP PLACEMENT

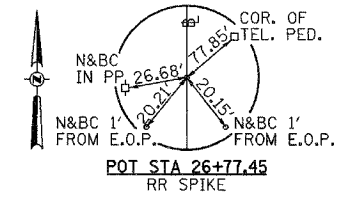
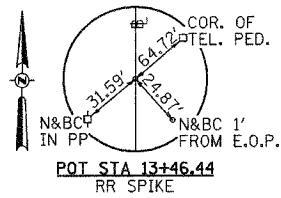


T 25 N, R 11 W, 2nd PM
SECTION 13

EROSION CONTROL PLAN
T.R. 434 OVER MUD CREEK
SECTION 06-26102-01-BR
IROQUOIS COUNTY
STATION 20+00.00

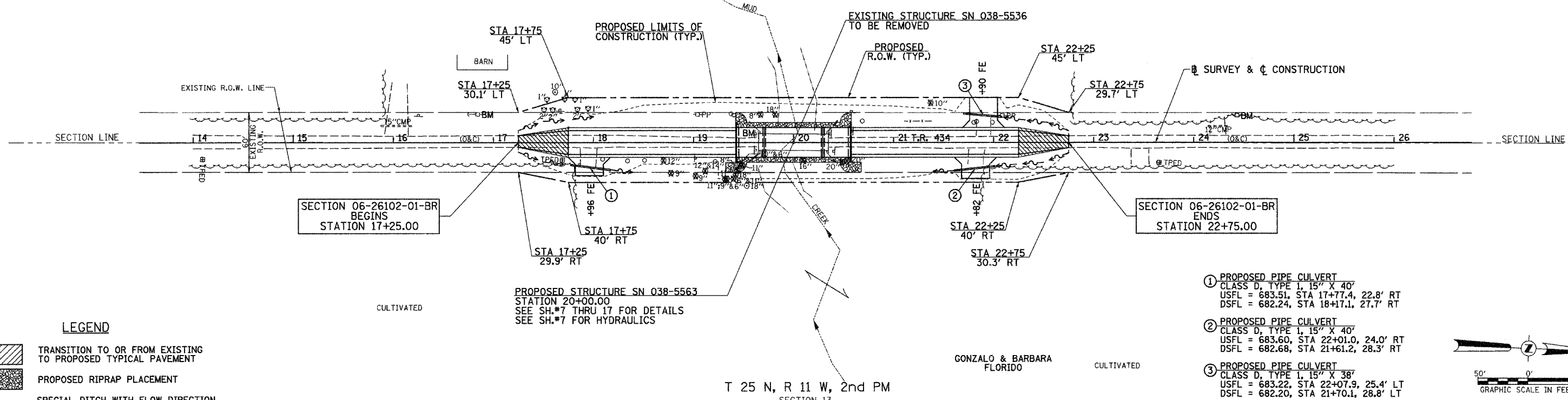
T 25 N, R 11 W, 2nd PM
SECTION 14

ROUTE NO.	SECTION	COUNTY	TOTAL SHEETS	SHEET NO.
TR 434	*	IROQUOIS	23	6
FED. ROAD DIST. NO. 7		ILLINOIS	PROJECT BROS-075(131)	
*06-26102-01-BR		CONTRACT #87356		



POT STA 13+46.44
RR SPIKE

POT STA 26+77.45
RR SPIKE



SECTION 06-26102-01-BR
BEGINS
STATION 17+25.00

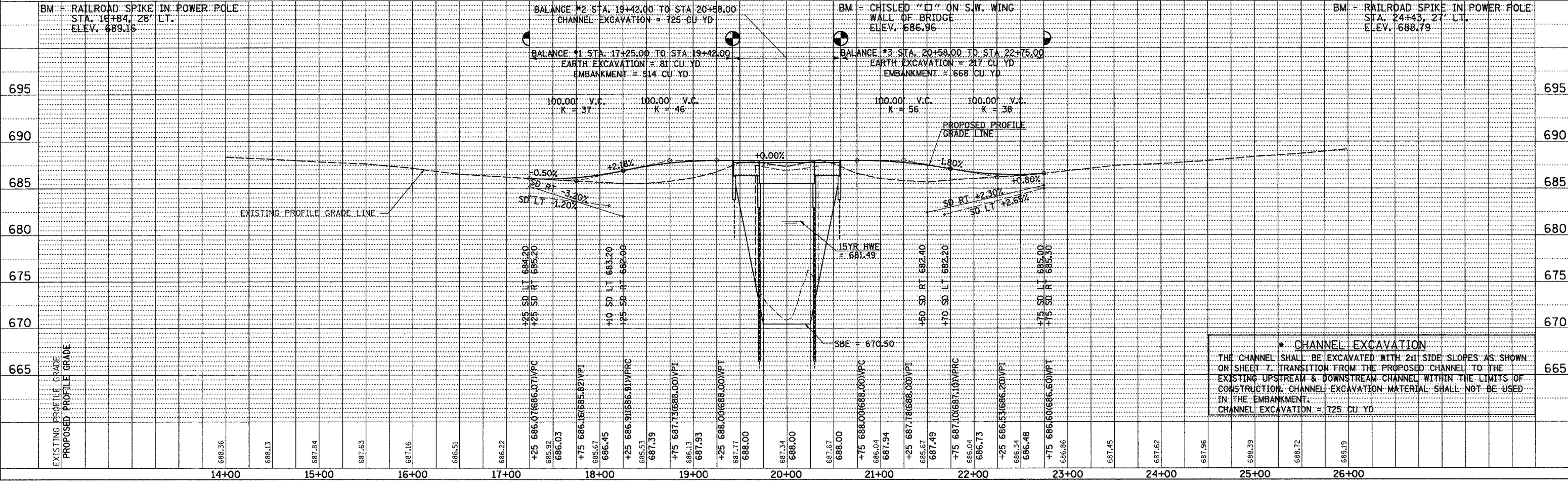
SECTION 06-26102-01-BR
ENDS
STATION 22+75.00

LEGEND

- TRANSITION TO OR FROM EXISTING TO PROPOSED TYPICAL PAVEMENT
- PROPOSED RIPRAP PLACEMENT
- SPECIAL DITCH WITH FLOW DIRECTION

- 1 PROPOSED PIPE CULVERT
CLASS D, TYPE 1, 15" X 40'
USFL = 683.51, STA 17+77.4, 22.8' RT
DSFL = 682.24, STA 18+17.1, 27.7' RT
- 2 PROPOSED PIPE CULVERT
CLASS D, TYPE 1, 15" X 40'
USFL = 683.60, STA 22+01.0, 24.0' RT
DSFL = 682.68, STA 21+61.2, 28.3' RT
- 3 PROPOSED PIPE CULVERT
CLASS D, TYPE 1, 15" X 38'
USFL = 683.22, STA 22+07.9, 25.4' LT
DSFL = 682.20, STA 21+70.1, 28.8' LT

T 25 N, R 11 W, 2nd PM
SECTION 13



* CHANNEL EXCAVATION
THE CHANNEL SHALL BE EXCAVATED WITH 2:1 SIDE SLOPES AS SHOWN ON SHEET 7. TRANSITION FROM THE PROPOSED CHANNEL TO THE EXISTING UPSTREAM & DOWNSTREAM CHANNEL WITHIN THE LIMITS OF CONSTRUCTION. CHANNEL EXCAVATION MATERIAL SHALL NOT BE USED IN THE EMBANKMENT.
CHANNEL EXCAVATION = 125 CU YD

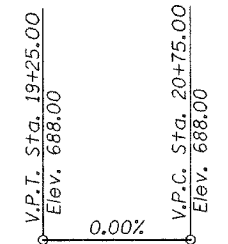
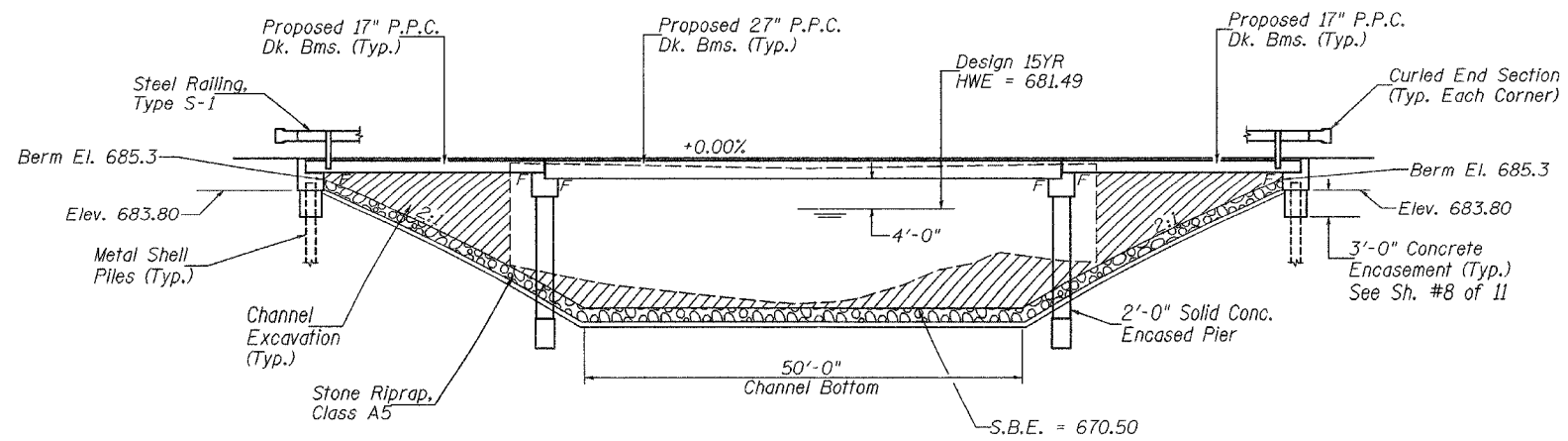
B.M.: RR Spike in Power Pole
Sta. 16+84, 28' Lt.
Elev. 689.16

RR Spike in Power Pole
Sta. 24+43, 27' Lt.
Elev. 688.79

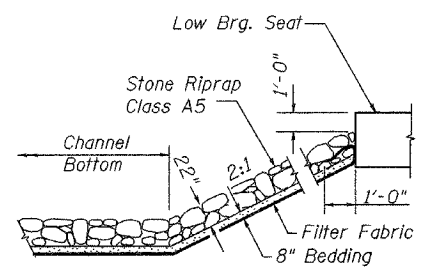
ROUTE NO.	SECTION	COUNTY	SHEET NO.	SHEET NO.
TR 434	*	IROQUOIS	23	7
FED. ROAD DIST. NO. 7		ILLINOIS	PROJECT BROS-075(131)	
			CONTRACT #87356	

Existing Structure:
Single span Pratt Pony truss with timber plank deck on concrete masonry abutments. The structure is ±70' back to back of abutments, ±14' out to out of deck and is not skewed.
Str. No. 038-5536

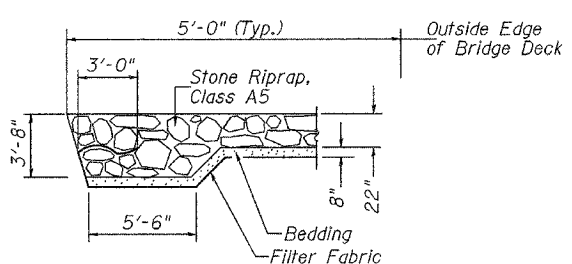
Salvage: None
Road to be closed to traffic during construction.



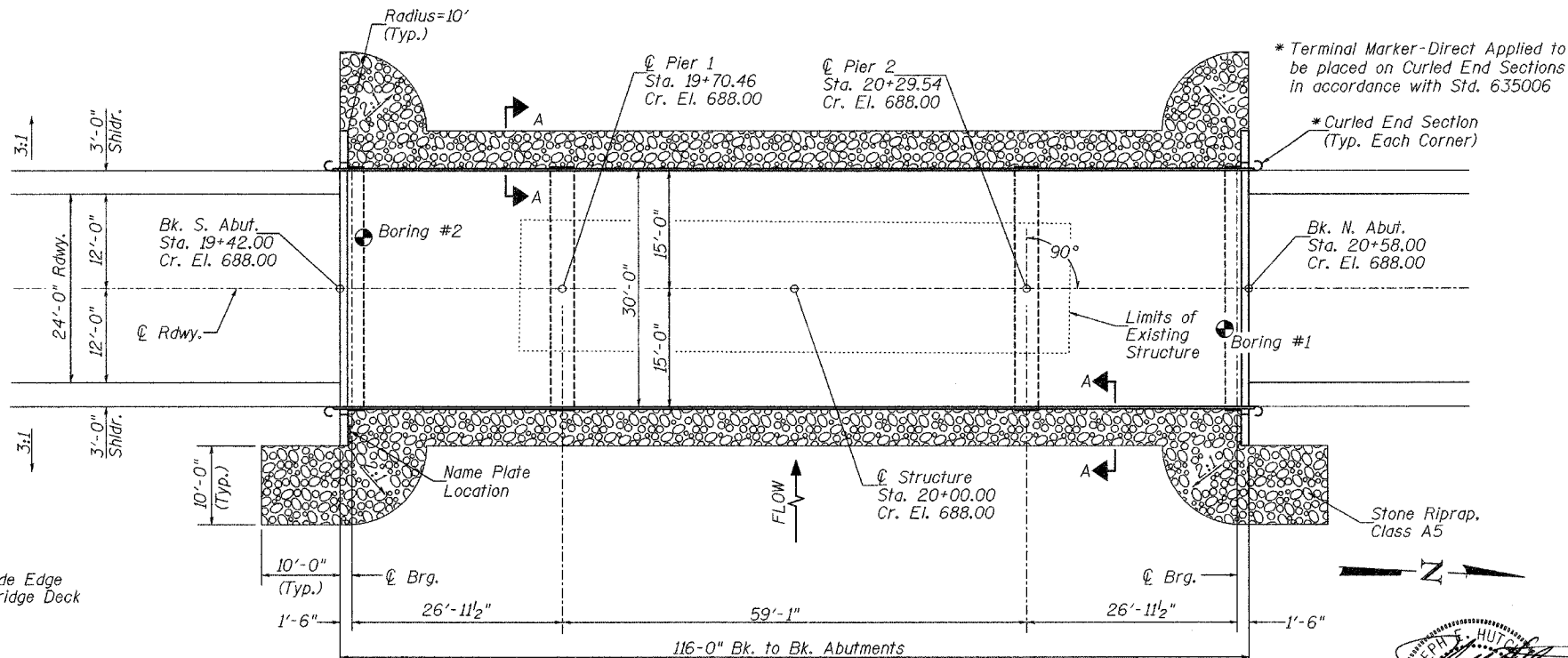
PROFILE GRADE



STONE RIPRAP DETAIL



SECTION A-A



PLAN

WATERWAY INFORMATION

Drainage Area = 30.4 Sq. Mi. Low Grade Elev. = 686.02 @ Sta. 17+43.66

Flood	Freq. Yr.	Q C.F.S.	Opening Sq. Ft.		Nat. Head - Ft.		Headwater El.		
			Exist.	Prop.	Exist.	Prop.	Exist.	Prop.	
Design	15	2,311	557	760	681.49	0.15	0.03	681.64	681.52
Base	100	3,553	608	829	682.25	0.35	0.11	682.60	682.36

Construction of this project complies with IDNR, Office of Water Resources Statewide Permit No. 2

DESIGN SPECIFICATIONS
2002 AASHTO & Interims

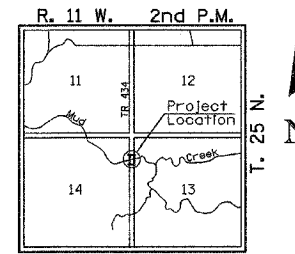
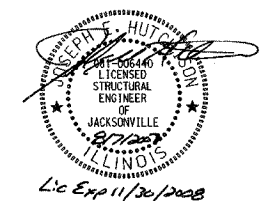
DESIGN STRESSES

(FIELD UNITS) $f'_c = 3,500$ p.s.i. $f_y = 60,000$ p.s.i. (Rein.)

(PRECAST PRESTRESSED UNITS) $f'_c = 5,000$ p.s.i. $f'_{ci} = 4,000$ p.s.i. $f'_s = 270,000$ p.s.i. ($\frac{1}{2}$ " Strands) $f'_{si} = 201,960$ p.s.i. ($\frac{1}{2}$ " Strands)

LOADING HS20-44

Allow 50#/sq. ft. for future wearing surface.



LOCATION SKETCH

GENERAL NOTES

The Contractor shall drive test piles to 110% of the nominal required bearing specified in production locations at the substructures specified or approved by the Engineer before ordering the remainder of the piles.
For Soil Boring Logs, See Sheets 9-11 of 11.
A Corrosion Inhibitor shall be used in the concrete for Precast Prestressed Concrete Deck Beams according to Article 1020.05(b)(12) of the Standard Specifications.
Reinforcement Bars shall conform to the requirements of ASTM A706 Grade 60 (IL Modified). See Special Provisions.
Layout of the slope protection system may be varied in the field to suit ground conditions as directed by the Engineer.
Excavation behind existing abutment walls shall be done before removing existing Superstructure.
The existing structural steel coating may contain lead. The contractor should take appropriate precautions to deal with the presence of lead on this project.

MUD CREEK
BUILT 200_ BY
STOCKLAND ROAD DISTRICT
IROQUOIS COUNTY
SEC. 06-26102-01-BR
T.R. 434 STATION 20+00.00
F.A. PROJ. BROS-075(131)
STR. NO. 038-5563 LOADING HS20-44

NAME PLATE

Locate Name Plate at S.E. Wingwall
Corner of Bridge (See Std. 51500I)

TOTAL BILL OF MATERIAL

ITEM	UNIT	SUPER	SUB	TOTAL
Channel Excavation	CU YD		725	725
Stone Riprap, Class A5	TON		705	705
Filter Fabric	SQ YD		680	680
① Removal of Existing Structures	EACH		1	1
Structure Excavation	CU YD		70	70
Concrete Structures	CU YD		98.1	98.1
Precast Prestressed Concrete Deck Beams (17" Depth)	SQ FT	1,650		1,650
Precast Prestressed Concrete Deck Beams (27" Depth)	SQ FT	1,770		1,770
① Reinforcement Bars	POUND		8,940	8,940
Steel Railing, Type S1	FOOT	232		232
Furnishing Metal Shell Piles 12"	FOOT		678	678
Driving Piles	FOOT		678	678
Test Pile Metal Shells	EACH		2	2
Pile Shoes	EACH		22	22
Concrete Encasement	CU YD		7.8	7.8
Name Plates	EACH		1	1
① Underwater Structure Excavation Protection-Location 1 (Pier #1)	EACH		1	1
① Underwater Structure Excavation Protection-Location 2 (Pier #2)	EACH		1	1

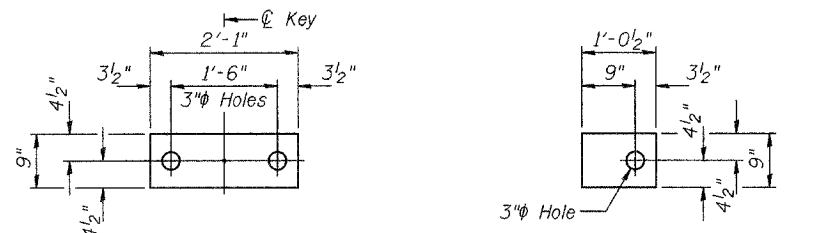
① See Special Provisions

I certify that to the best of my knowledge, information and belief, this bridge design is structurally adequate for the design loading shown on the plans. The design is an economical one for the style of structure and complies with requirements of the current AASHTO Standard Specification for Highway Bridges.
This design complies with all requirements of the current AASHTO Guide Specifications for Seismic Design of highway bridges.

Gregory S. Hult
Illinois Structural No. 6440
Expires 11/30/2008

GENERAL PLAN & ELEVATION
T.R. 434 OVER MUD CREEK
SECTION 06-26102-01-BR
IROQUOIS COUNTY
STR. NO. 038-5563
STATION 20+00.00

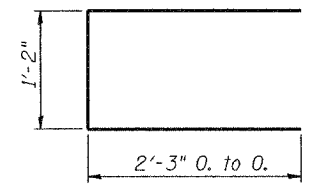
DESIGNED	J.E.H.
CHECKED	B.A.N.
DRAWN	C.E.T.
CHECKED	J.E.H.



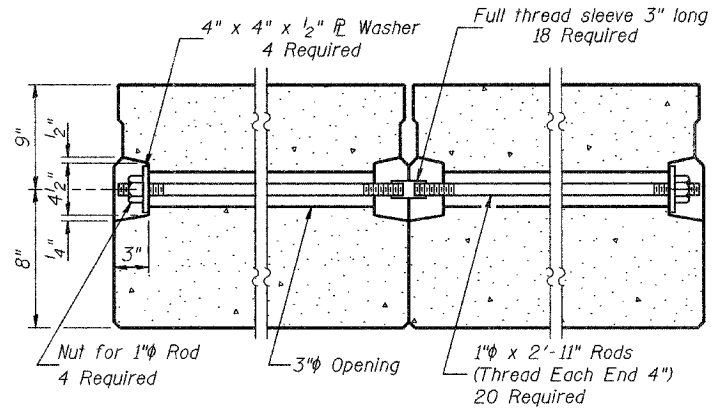
1/2" FABRIC BEARING PAD
(Interior) 36 required

1/2" FABRIC BEARING PAD
(Exterior) 8 required

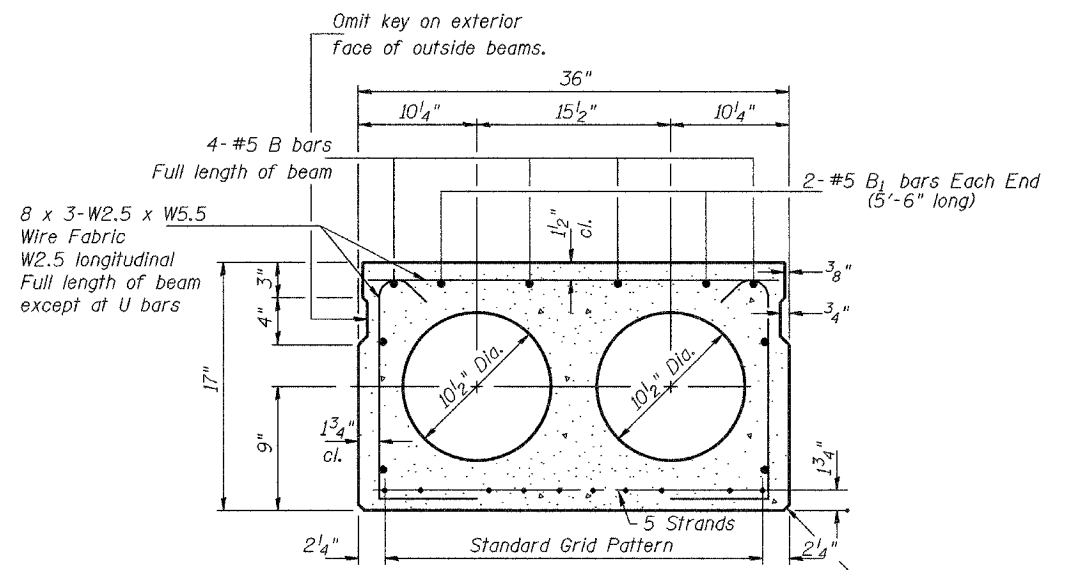
FIXED



BAR U



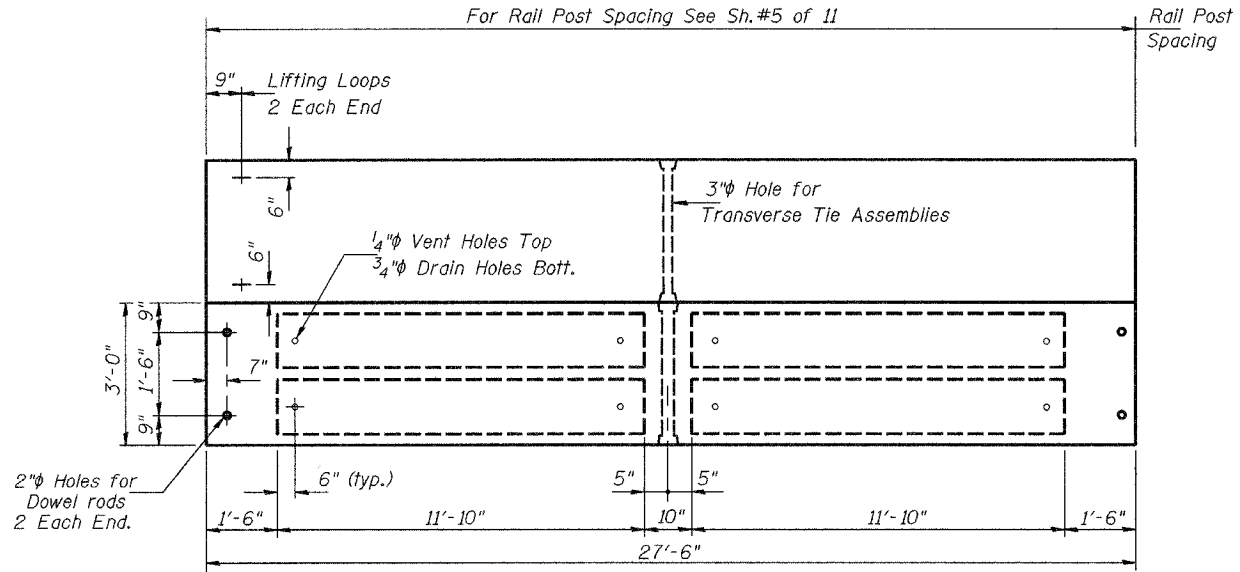
TYPICAL TRANSVERSE TIE ASSEMBLY



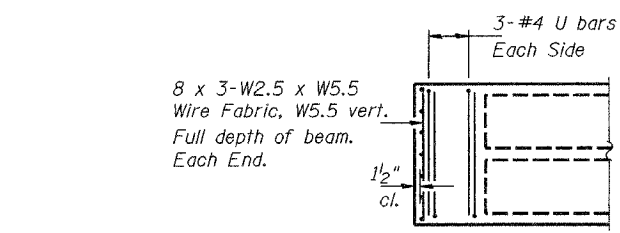
TYPICAL SECTION

5-1/2" Strands, Each Strand Stressed to 30,900 Lbs.
5 Strands 1 3/4" up

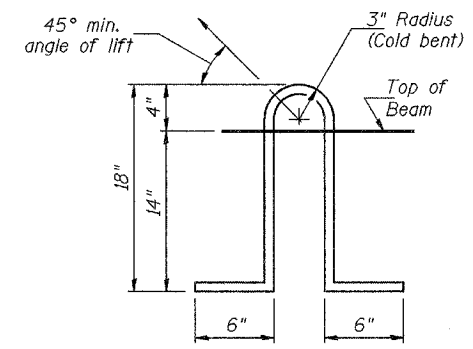
Note: Place strands symmetrically about ϕ of beam.



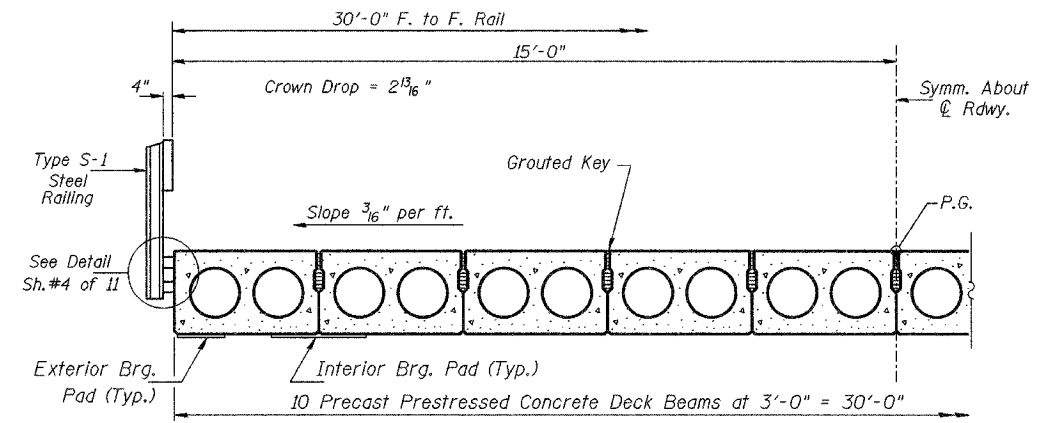
PLAN



END PLAN



LIFTING LOOP DETAIL



HALF CROSS SECTION

NOTES

Prestressing steel shall be uncoated high strength, low relaxation 7-wire strand, Grade 270. The nominal diameter shall be 1/2" and the nominal cross-sectional area shall be 0.153 sq. in. Lifting loops shall be 2-1/2" ϕ -270 ksi strands, as shown.

The 1" rods in the transverse tie assembly shall be tightened to a snug fit and the threads set. Pockets that receive transverse tie bar on outside shall be filled with grout after transverse tie assembly is in place.

Non prestressing steel shall conform to the requirements of ASTM A706, Grade 60 (IL Modified). The bearing seat surfaces shall be adjusted by shimming to assure firm and even bearing. Two 1/8" fabric adjusting shims of the dimensions of the Exterior Bearing Pad shall be provided for each bearing.

Keyway surfaces shall be cleaned to remove form oil or other bond breaking material prior to shipment of the beams. Cleaning shall be done by sandblasting the keyway areas between top of the beam and the bottom edge of the key.

A Corrosion Inhibitor shall be used in the concrete for precast prestressed concrete deck beams according to Article 1020.05(b)(12).

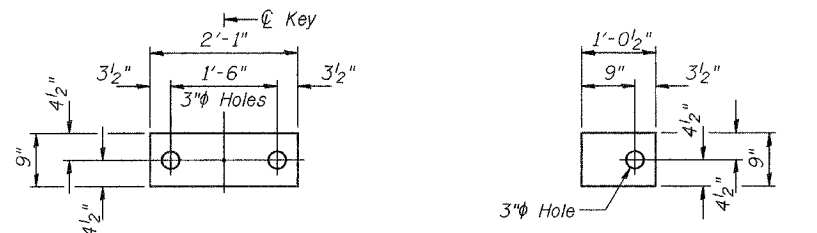
Required Release Strength, f'ci, shall be 4,000 p.s.i.

Rail post anchor devices shall be cast into outside face of exterior beams. See Sheet #4 of 11 for details and Sheet #5 of 11 for spacing.

BILL OF MATERIAL

ITEM	UNIT	QUANTITY
Precast Prestressed Concrete Deck Beams (17" Depth)	SQ FT	1,650

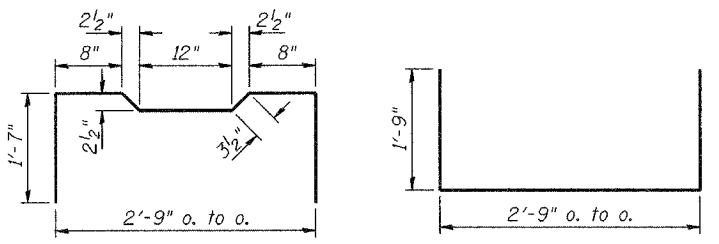
SUPERSTRUCTURE-SPANS 1 & 3
T.R. 434 OVER MUD CREEK
SECTION 06-26102-01-BR
IROQUOIS COUNTY
STATION 20+00.00



1/2" FABRIC BEARING PAD
(Interior) 18 required

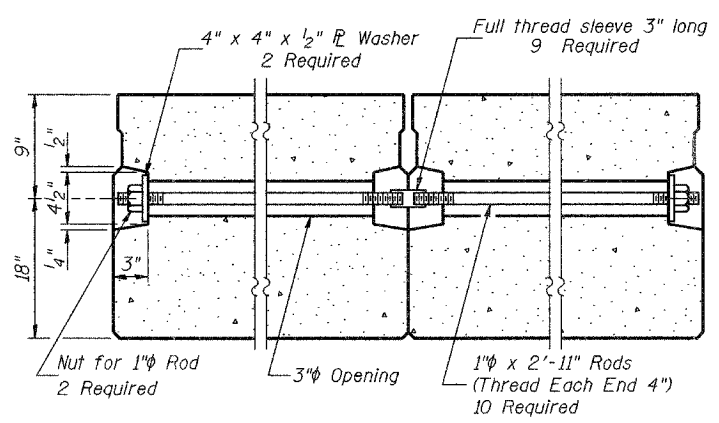
1/2" FABRIC BEARING PAD
(Exterior) 4 required

FIXED

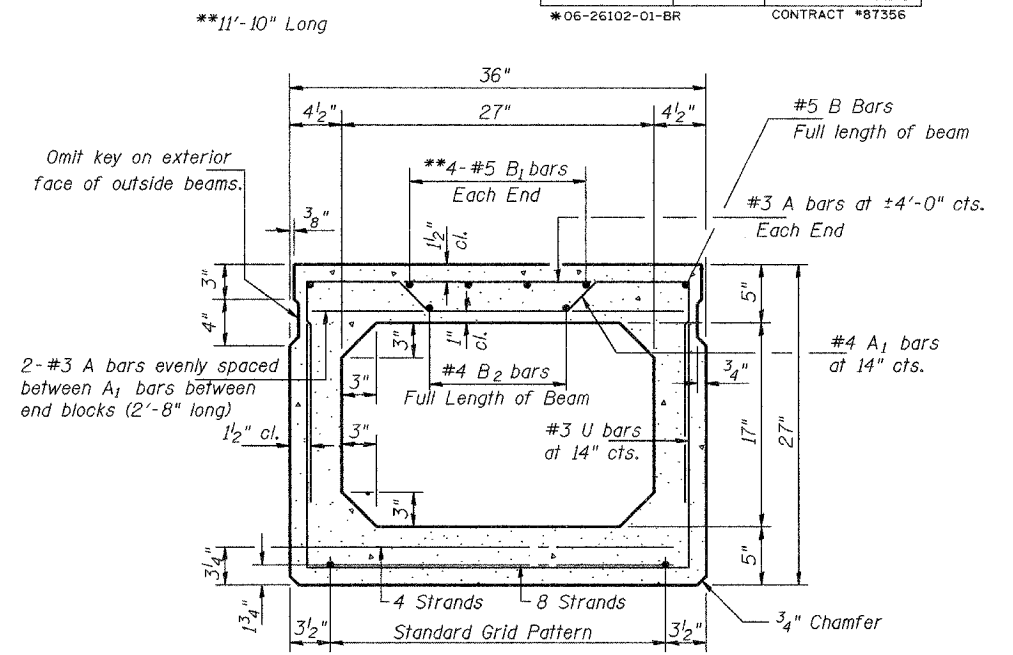


BAR A₁

BARS U & U₁

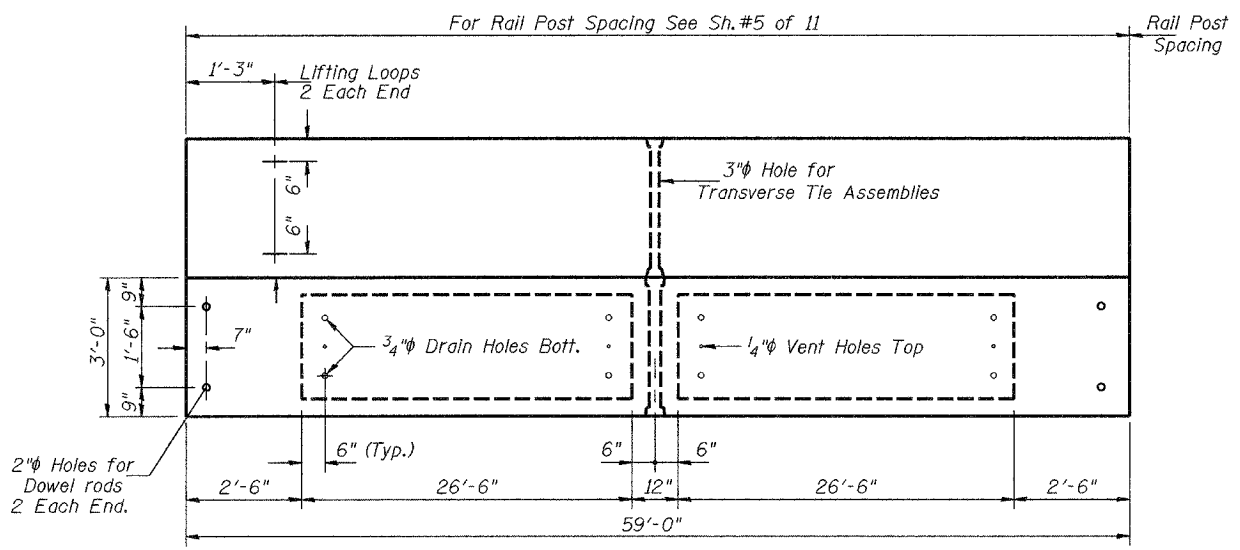


TYPICAL TRANSVERSE TIE ASSEMBLY

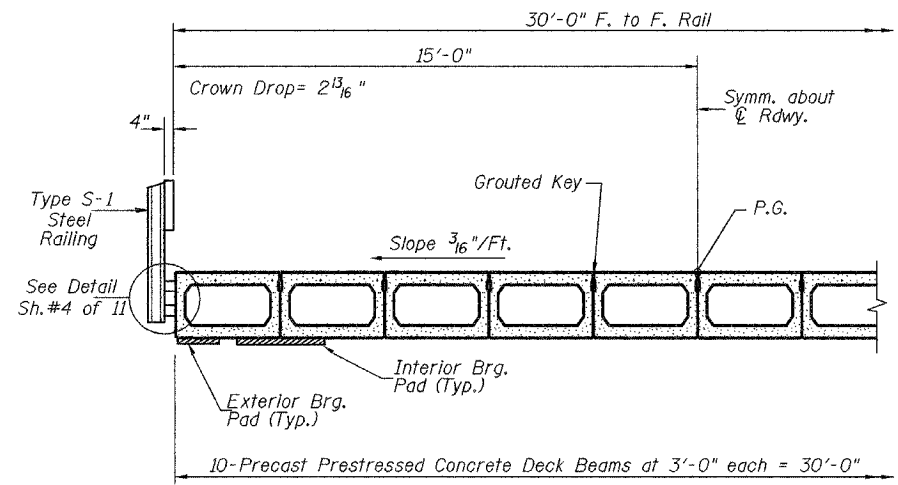


TYPICAL SECTION
12-1/2" Strands Each Strand Stressed to 30,900 Lbs.
8-Strands 1 3/4" up, 4-Strands 3 1/4" up

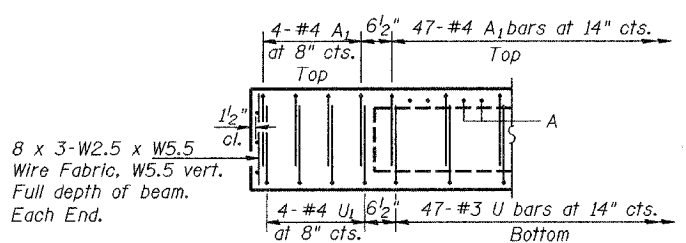
Note: Place strands symmetrically about \bar{C} of beam.



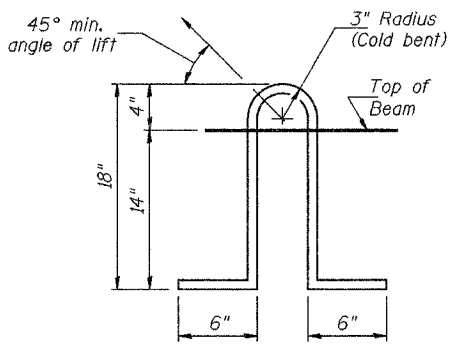
PLAN



HALF CROSS SECTION



END ELEVATION



LIFTING LOOP DETAIL

NOTES

Prestressing steel shall be uncoated high strength, low relaxation 7-wire strand, Grade 270. The nominal diameter shall be 1/2" and the nominal cross-sectional area shall be 0.153 sq. in. Lifting loops shall be 2-1/2" ϕ 270 ksi strands, as shown.

The 1" rods in the transverse tie assembly shall be tightened to a snug fit and the threads set. Pockets that receive transverse tie bar on outside shall be filled with grout after transverse tie assembly is in place.

Non prestressing steel shall conform to the requirements of ASTM A706, Grade 60 (IL Modified). The bearing seat surfaces shall be adjusted by shimming to assure firm and even bearing. Two 1/8" fabric adjusting shims of the dimensions of the Exterior Bearing Pad shall be provided for each bearing.

Keyway surfaces shall be cleaned to remove form oil or other bond breaking material prior to shipment of the beams. Cleaning shall be done by sandblasting the keyway areas between top of the beam and the bottom edge of the key.

A Corrosion Inhibitor shall be used in the concrete for precast prestressed concrete deck beams according to Article 1020.05(b)(12).

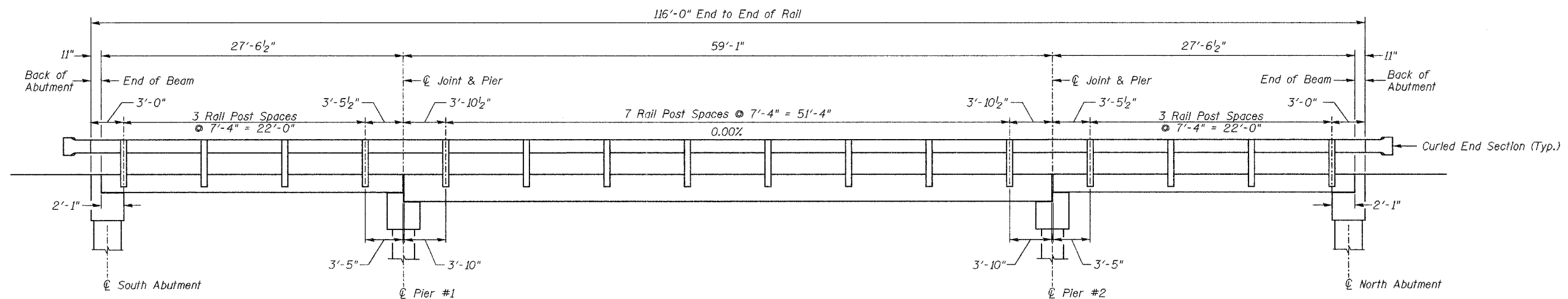
Required Release Strength, f'ci, shall be 4,000 p.s.i.

Rail post anchor devices shall be cast into outside face of exterior beams. See Sheet #4 of 11 for details and Sheet #5 of 11 for spacing.

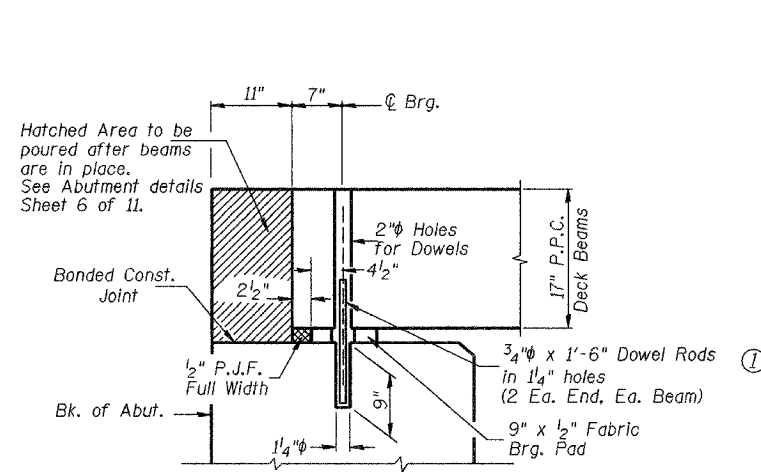
BILL OF MATERIAL

ITEM	UNIT	QUANTITY
Precast Prestressed Concrete Deck Beams (27" Depth)	SQ FT	1,770

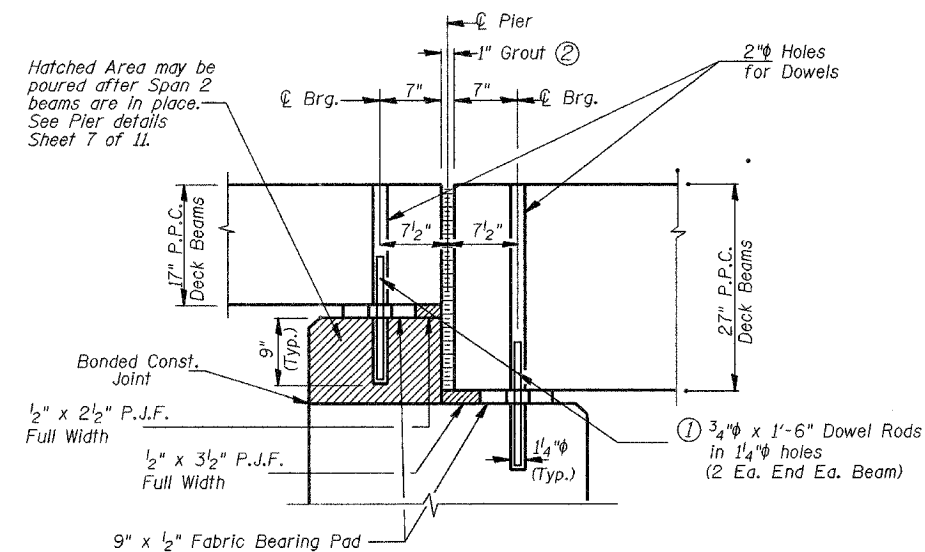
SUPERSTRUCTURE-SPAN 2
T.R. 434 OVER MUD CREEK
SECTION 06-26102-01-BR
IROQUOIS COUNTY
STATION 20+00.00



RAIL POST SPACING



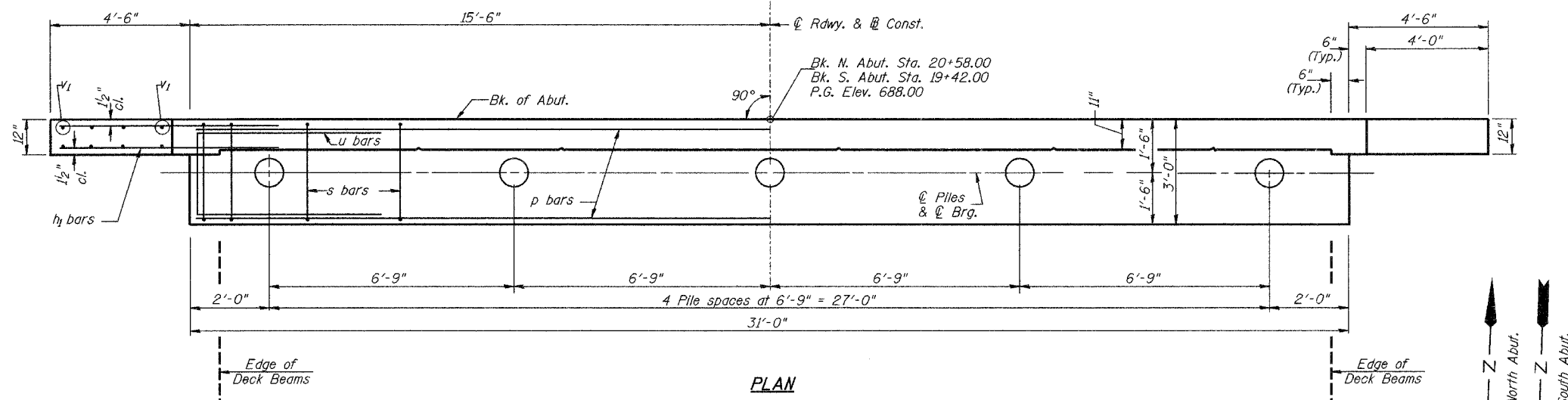
SECTION THRU ABUTMENTS



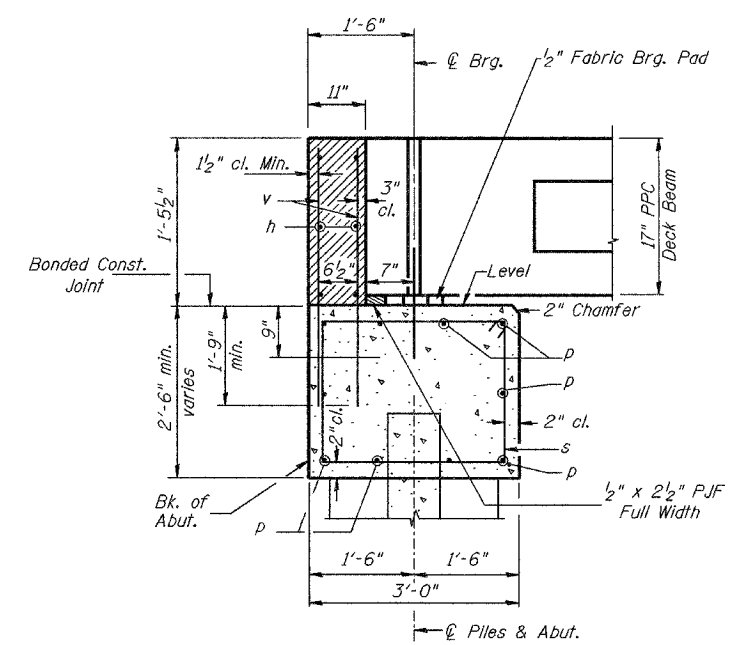
SECTION THRU PIERS

- ① Dowel Rods to be grouted after beams are in place and allowed to cure (Min. 24 hr.) prior to grouting the shear keys.
- ② 1" Joint shall be packed with a very dry mix of 2:1 sand and P.C. mortar. 1" Dimension may vary plus or minus to accommodate tolerance in beam lengths.

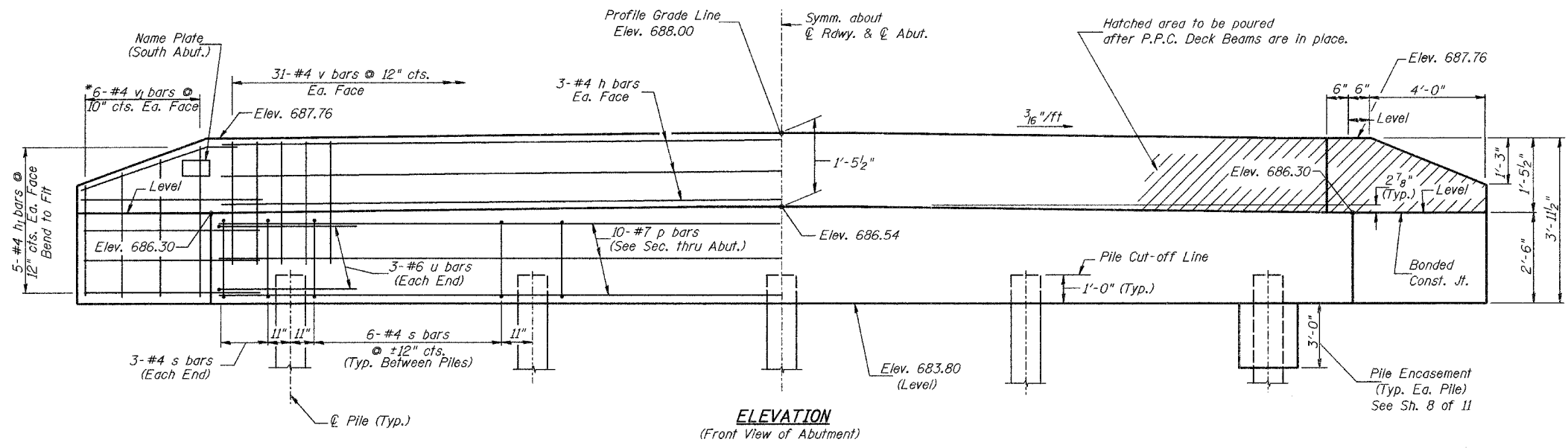
**SUPERSTRUCTURE DETAILS
AND RAIL POST SPACING
T.R. 434 OVER MUD CREEK
SECTION 06-26102-01-BR
IROQUOIS COUNTY
STATION 20+00.00**



PLAN



SECTION THRU ABUTMENT



ELEVATION
(Front View of Abutment)

**TWO ABUTMENTS
BILL OF MATERIAL**

BAR	NO.	SIZE	LENGTH	SHAPE
h	12	#4	30'-9"	—
h1	40	#4	6'-6"	—
p	20	#7	30'-9"	—
s	60	#4	10'-5"	□
u	12	#6	11'-7"	—
v	124	#4	3'-2"	—
v1	24	#4	6'-1"	—
Concrete Structures		CU YD	23.1	
Reinforcement Bars		POUND	2,660	
Structure Excavation		CU YD	60	
Name Plates		EACH	1	
Furnishing Metal Shell Piles 12"		FOOT	216	
Driving Piles		FOOT	216	
Test Pile Metal Shells		EACH	1	
Pile Shoes		EACH	10	
Concrete Encasement		CU YD	2.6	

① See Special Provisions

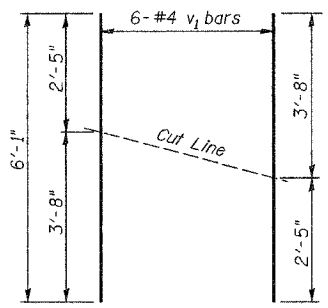
DESIGN STRESSES
 $f'_c = 3,500$ p.s.i.
 $f_y = 60,000$ p.s.i.

NOTES

- The Backwall and the portion of the Wingwalls above the bonded construction joint shall be cast against the in-place beam.
- Reinforcement bars shall conform to ASTM A706 Grade 60 (IL Modified).

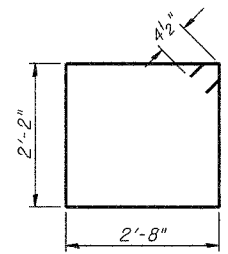
PILE DATA

Type & Size: Metal Shell-12" ϕ x 0.25" walls w/ pile shoes
 Nominal Required Bearing: 150 kips
 Allowable Resistance Available: 50 kips
 Est. Length: 24' Each Abutment
 No. Req'd: 10 (Includes 1 Test Pile at North Abut.)

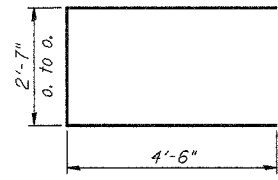


BAR CUTTING DIAGRAM

*Order v1 bars full length. Cut as shown and use remainder of bars in opposite face.



BAR s



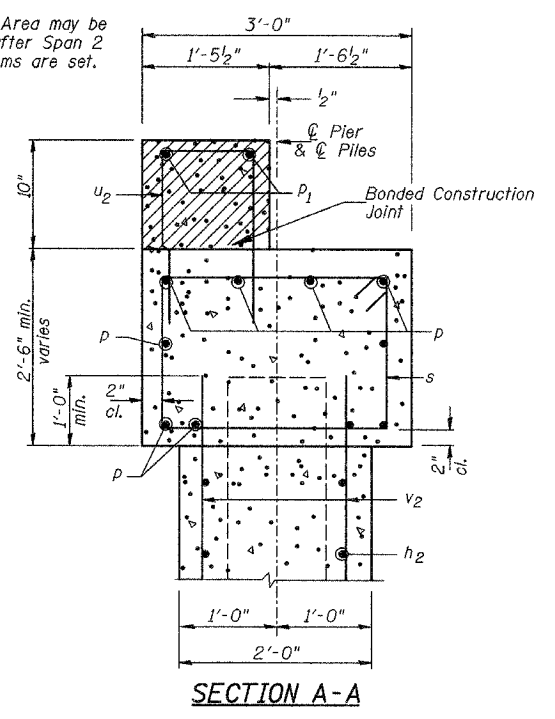
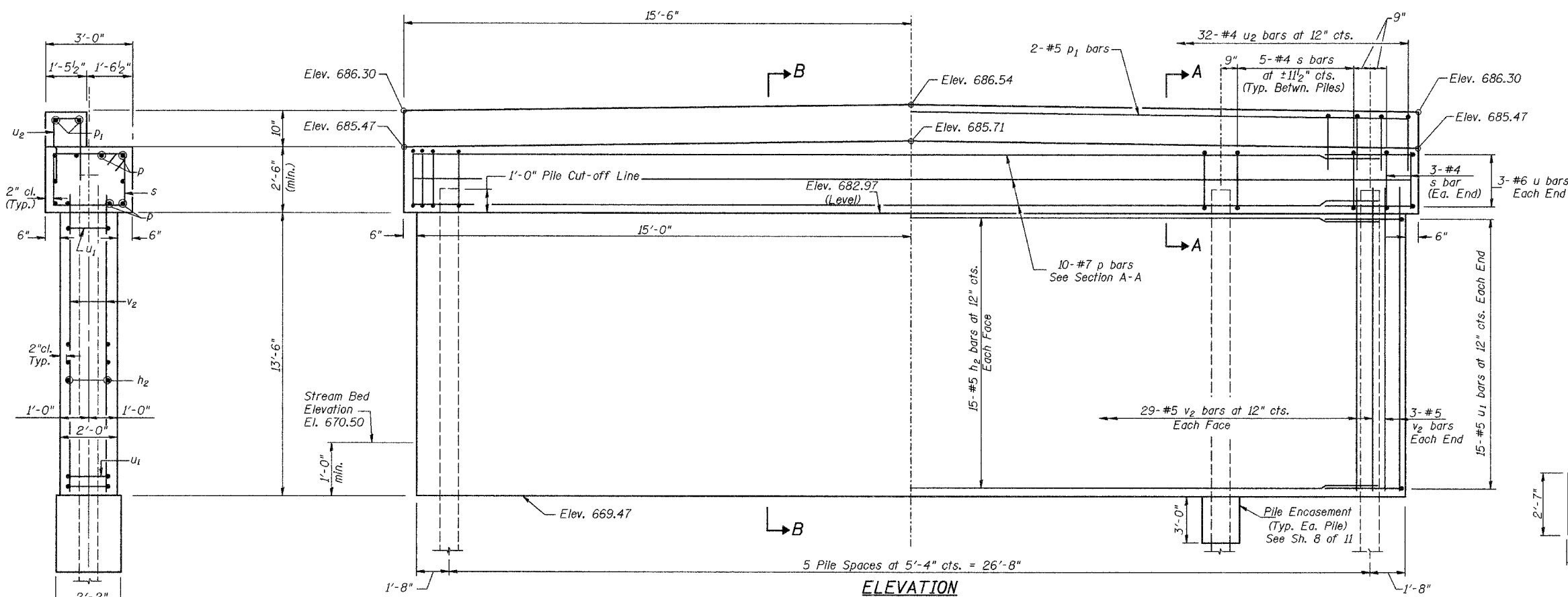
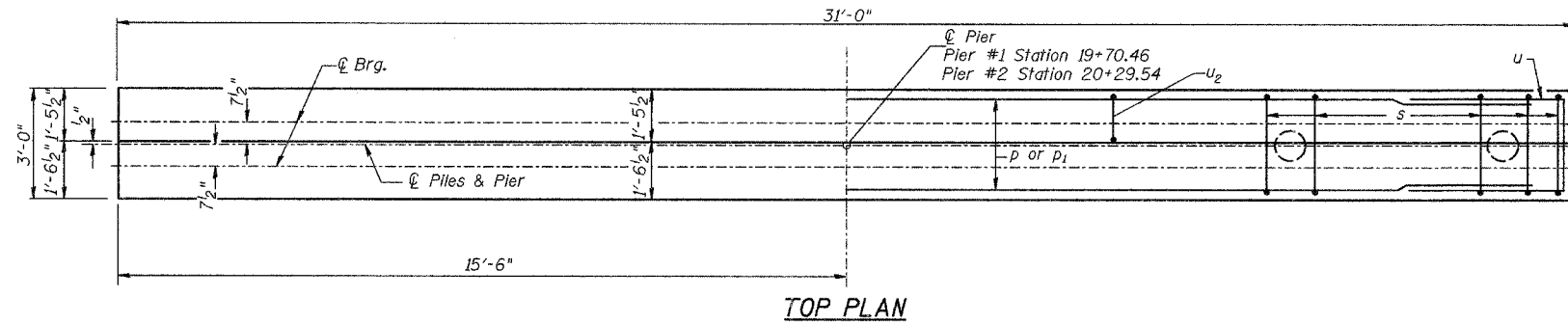
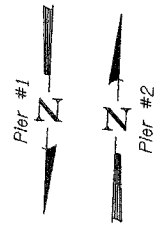
BAR u

ABUTMENTS
T.R. 434 OVER MUD CREEK
SECTION 06-26102-01-BR
IROQUOIS COUNTY
STATION 20+00.00

NOTES:
All edges shall have standard
3/4" chamfer.

ROUTE NO.	SECTION	COUNTY	TOTAL SHEETS	SHEET NO.
TR 434	*	IROQUOIS	23	13
FED. ROAD DIST. NO. 7	ILLINOIS	PROJECT	BROS-075(131)	
*06-26102-01-BR		CONTRACT #87356		

SHEET NO. 7
OF 11 SHEETS



**TWO PIERS
BILL OF MATERIAL**

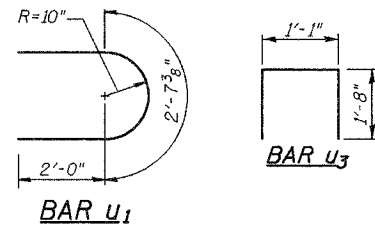
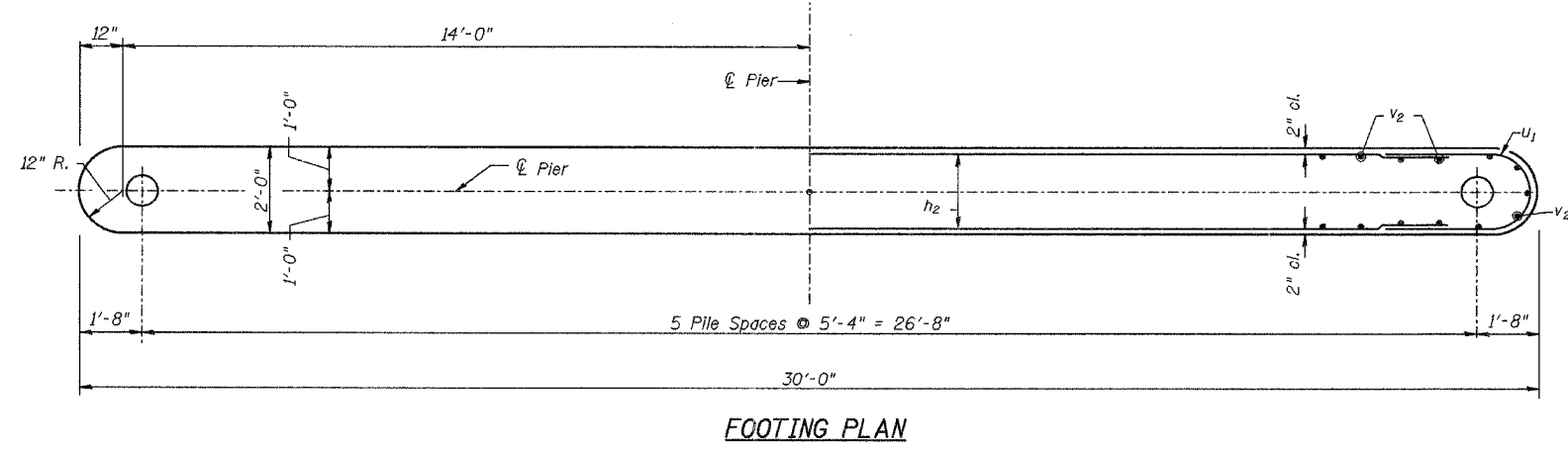
BAR	NO.	SIZE	LENGTH	SHAPE
h ₂	60	#5	27'-8"	—
p	20	#7	30'-9"	—
p ₁	4	#5	30'-9"	—
s	62	#4	10'-5"	□
u	12	#6	11'-7"	⊔
u ₁	60	#5	6'-8"	⊔
u ₂	64	#4	4'-5"	⊔
v ₂	128	#5	14'-4"	—

Concrete Structures	CU YD	75.0
① Reinforcement Bars	POUND	6,280
Structure Excavation	CU YD	10
Furnishing Metal Shell Piles 12"	FOOT	462
Driving Piles	FOOT	462
Test Pile Metal Shells	EACH	1
Pile Shoes	EACH	12
Concrete Encasement	CU YD	5.2
① Underwater Structure Excavation Protection, Location 1	EACH	1
① Underwater Structure Excavation Protection, Location 2	EACH	1

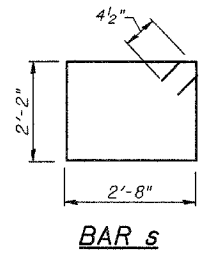
① See Special Provisions

SECTION B-B

PILE DATA
Type & Size: Metal Shell-12" x 0.25" walls w/ pile shoes
Nominal Required Bearing: 345 kips
Allowable Resistance Available: 115 kips
Est. Length: 42' Each Pier
No. Req'd.: 12 (Includes 1 Test Pile at Pier #1)



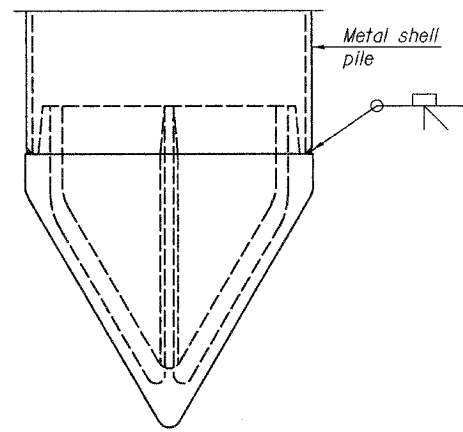
BAR U3



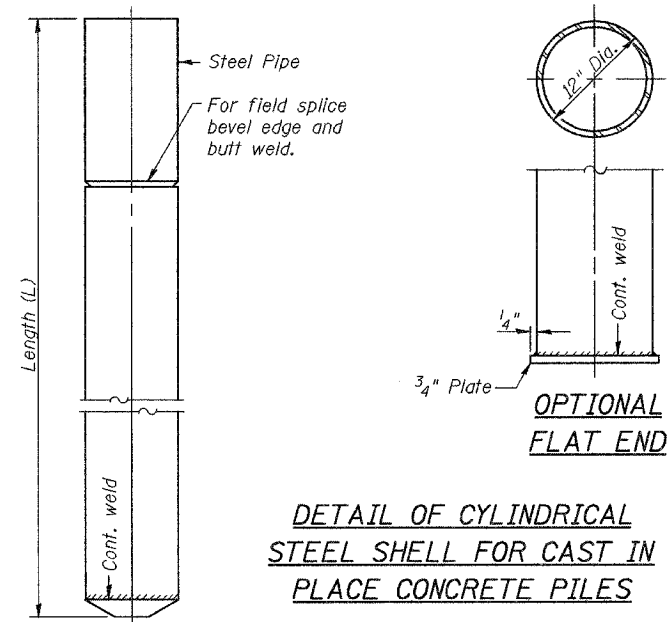
BAR S

**PIERS
T.R. 434 OVER MUD CREEK
SECTION 06-26102-01-BR
IROQUOIS COUNTY
STATION 20+00.00**

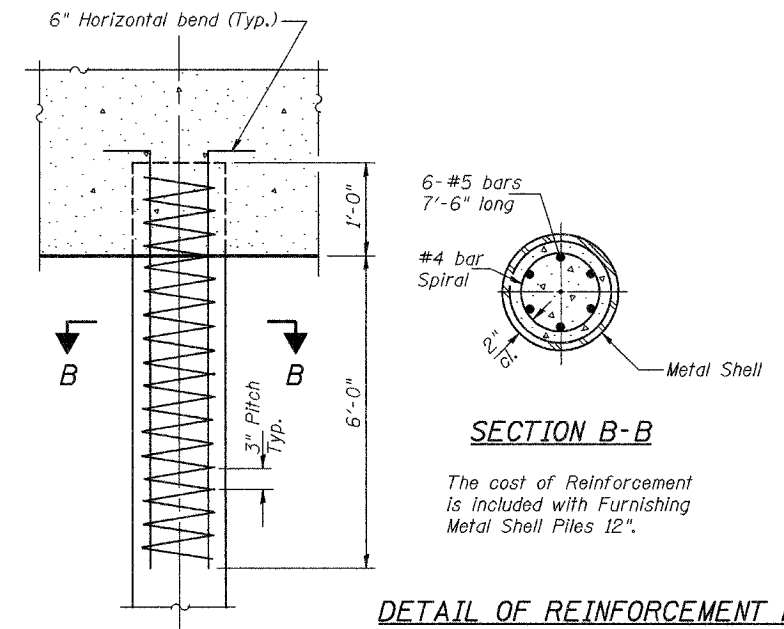
Notes: Driving and bearing ends of pipe shall be cut square. The thickness of the shell shall be 0.25 inches with a tolerance of 5%. The shell shall be according to Article 1006.05(a) of the Standard Specifications, and shall be ASTM A252 Grade 3.



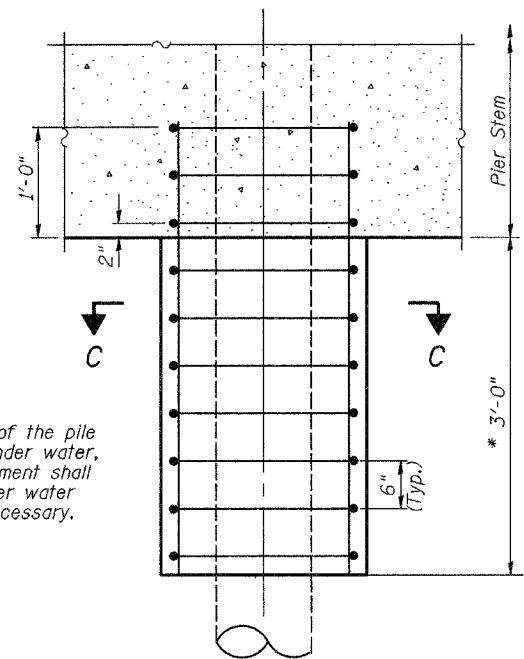
METAL SHELL PILE SHOE ATTACHMENT



DETAIL OF CYLINDRICAL STEEL SHELL FOR CAST IN PLACE CONCRETE PILES

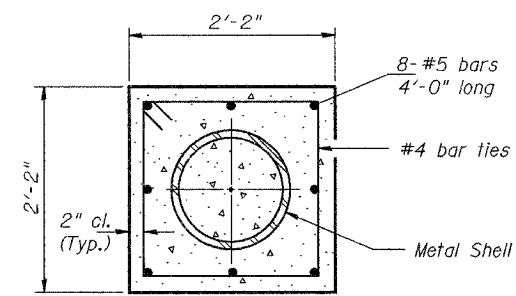


DETAIL OF REINFORCEMENT FOR METAL SHELLS AT ABUTMENTS

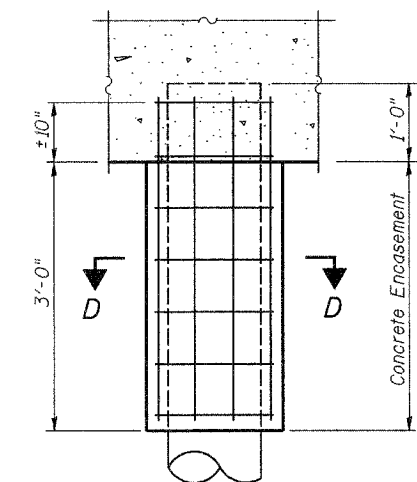


DETAIL OF PROTECTION FOR METAL SHELLS AT PIERS

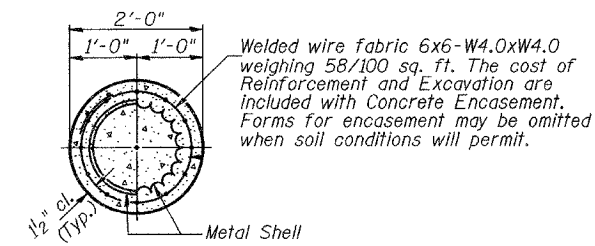
* If a portion of the pile encasement is under water, Concrete Encasement shall be tremied under water into forms as necessary.



SECTION C-C
The cost of Reinforcement and Excavation are included with Concrete Encasement.




DETAIL OF METAL SHELL PILE ENCASEMENT AT ABUTMENTS



SECTION D-D

PILE DETAILS
T.R. 434 OVER MUD CREEK
SECTION 06-26102-01-BR
IROQUOIS COUNTY
STATION 20+00.00



Midwest Testing Services, Inc.
3705 Progress Blvd.
Peru, IL 61354

BORING LOG

Sheet 1 of 3

Phone: 815-223-6696
Fax: 815-223-6659
E-Mail: Midwest@TheRamp.net

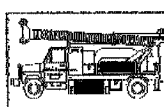
Client: Hutchison Engineering, Inc.
 Project Name: Section 06-26142-01-BR TR-434
 Project Site: Stockland Township
Iroquois County, Illinois

Boring No. B-1
 Surface Elev. 687.50
 Auger Depth 51' Rotary Depth NA
 Start Date 05/27/07 Finish Date 05/27/07

Location: 5' Right of centerline
Station 20+55

(DEPTH) *ELEV.	DESCRIPTION OF MATERIALS	Graphic Log	Depth in feet	SAMPLES					Dry Density (PCF)	REMARKS
				Sample No.	Sample Type	Qu (TSF)	N Value (Blows)	Bulge / Shear		
687.50										
686.50	Medium Brown Gravelly Loam (Fill)		1							
685.50			2							
684.50			3	1	SS	---	15	---	12	
683.50	Stiff Black And Brown Silty Clay (Fill)		4							
682.50			5	2	SS	1.7	11	S	14	
681.50			6							
680.50			7	3	SS	1.4	13	S	16	
679.50	Stiff Black Silty Clay		8							
678.50			9							
677.50			10	4	SS	1.2	8	B	21	
676.50	Medium Gray Fine Sand & Gravel		11							
675.50			12	5	SS	1.4	10	B	22	
674.50	Hard Gray Silty Clay Till		13							
673.50			14							
672.50	Dense Gray Fine To Coarse Sand		15	6	SS	---	12	---	---	
671.50			16							
670.50		17								
669.50		18	7	SS	4.1	22	B	13		
668.50		19								
667.50		20	8	SS	---	34	---	---		

Groundwater Data: Static water table after auger removal - elevation 673.5.



Midwest Testing Services, Inc.
3705 Progress Blvd.
Peru, IL 61354

BORING LOG

Sheet 2 of 3

Phone: 815-223-6696
Fax: 815-223-6659
E-Mail: Midwest@TheRamp.net

Client: Hutchison Engineering, Inc.
 Project Name: Section 06-26142-01-BR TR-434
 Project Site: Stockland Township
Iroquois County, Illinois

Boring No. B-1
 Surface Elev. 687.50
 Auger Depth 51' Rotary Depth NA
 Start Date 05/27/07 Finish Date 05/27/07

Location: 5' Right of centerline
Station 20+55

(DEPTH) *ELEV.	DESCRIPTION OF MATERIALS	Graphic Log	Depth in feet	SAMPLES					Dry Density (PCF)	REMARKS
				Sample No.	Sample Type	Qu (TSF)	N Value (Blows)	Bulge / Shear		
666.50										
665.50	Dense Gray Fine Sand To Fine Gravel		22							
664.50			23	9	SS	---	37	---	---	
663.50			24							
662.50	Dense Gray Clay Till		25	10	SS	---	46	---	---	
661.50			26							
660.50			27							
659.50			28	11	SS	---	33	---	---	
658.50			29							
657.50			30	12	SS	5.7	35	S	12	
656.50			31							
655.50			32							
654.50			33	13	SS	5.2	32	B	12	
653.50			34							
652.50			35	14	SS	4.7	28	B	11	
651.50		36								
650.50		37								
649.50		38								
648.50		39								
647.50		40	15	SS	6.7	41	S	11		
646.50		41								

Groundwater Data: Static water table after auger removal - elevation 673.5.

SOIL BORING LOGS
T.R. 434 OVER MUD CREEK
SECTION 06-26102-01-BR
IROQUOIS COUNTY
STATION 20+00.00

Midwest Testing Services, Inc.
3705 Progress Blvd.
Peru, IL 61354
Phone: 815-223-6696
Fax: 815-223-6659
E-Mail: Midwest@TheRamp.net

BORING LOG
Sheet 3 of 3
Boring No. B-1
Surface Elev. 687.50
Auger Depth 51' Rotary Depth NA
Start Date 05/27/07 Finish Date 05/27/07

Client: Hutchison Engineering, Inc.
Project Name: Section 06-26142-01-BR TR-434
Project Site: Stockland Township
Iroquois County, Illinois

Location: 5' Right of centerline
Station 20+55

DEPTH *ELEV.	DESCRIPTION OF MATERIALS	Graphic Log	Depth in feet	SAMPLES					DRILLED BY		REMARKS
				Sample No.	Sample Type	Qu (TSF)	N Value (Blows)	Bulge / Shear	Moisture (%)	Dry Density (PCF)	
643.50	Very Dense Yellowish Brown To Gray Sandy Loam Till		43							Randy Safranski Diedrich D-120	
642.50			16	SS	100	8"		10			
641.50											
640.50											
639.50											
638.50											
637.50											
636.50											
635.50											
634.50											
633.50											
632.50											
631.50											
630.50											
629.50											
628.50											
627.50											
626.50											
625.50											

Groundwater Data: Static water table after auger removal - elevation 673.5.

Midwest Testing Services, Inc.
3705 Progress Blvd.
Peru, IL 61354
Phone: 815-223-6696
Fax: 815-223-6659
E-Mail: Midwest@TheRamp.net

BORING LOG
Sheet 1 of 3
Boring No. B-2
Surface Elev. 687.90
Auger Depth 51' Rotary Depth NA
Start Date 05/27/07 Finish Date 05/27/07


Client: Hutchison Engineering, Inc.
Project Name: Section 06-26142-01-BR TR-434
Project Site: Stockland Township
Iroquois County, Illinois

Location: 6' Left of centerline
Station 19+45

DEPTH *ELEV.	DESCRIPTION OF MATERIALS	Graphic Log	Depth in feet	SAMPLES					DRILLED BY		REMARKS	
				Sample No.	Sample Type	Qu (TSF)	N Value (Blows)	Bulge / Shear	Moisture (%)	Dry Density (PCF)		
687.90	Stiff Black And Brown Silty Clay (Fill)		1							Randy Safranski Diedrich D-120		
686.90												
685.90												
684.90			1	SS	1.8	9	B	20				
683.90												
682.90												
681.90			2	SS	1.0	6	B	23				
680.90												
679.90												
678.90												
677.90												
676.90												
675.90			Stiff Black Silty Clay		12							
674.90												
673.90												
672.90												
671.90			Medium Gray Fine Sand And Gravel		16	6	SS	15				
670.90												
669.90												
668.90												
667.90	Dense Gray Fine To Coarse Sand		19									
			20	8	SS	43						

Groundwater Data: Static water table after auger removal - elevation 673.5.

SOIL BORING LOGS
T.R. 434 OVER MUD CREEK
SECTION 06-26102-01-BR
IROQUOIS COUNTY
STATION 20+00.00



Midwest Testing Services, Inc.
3705 Progress Blvd.
Peru, IL 61354

BORING LOG

Sheet 2 of 3

Phone: 815-223-6696
Fax: 815-223-6659
E-Mail: Midwest@TheRamp.net


Client: Hutchison Engineering, Inc.
 Project Name: Section 06-26142-01-BR TR-434
 Project Site: Stockland Township
Iroquois County, Illinois

Boring No. B-2
 Surface Elev. 687.90
 Auger Depth 51' Rotary Depth NA
 Start Date 05/27/07 Finish Date 05/27/07

Location: 6' Left of centerline
Station 19+45

(DEPTH) ELEV.	DESCRIPTION OF MATERIALS	Graphic Log	Depth in feet	SAMPLES						DRILLED BY		REMARKS									
				Sample No.	Sample Type	Qu (TSF)	N Value (Blows)	Bulge / Shear	Moisture (%)	Dry Density (PCF)											
666.90																					
665.90			22																		
664.90			23	9	SS	--	35	--	--												
663.90			24																		
662.90	Dense Gray Fine Sand To Fine Gravel		25	10	SS	--	32	--	--												
661.90			26																		
660.90			27																		
659.90			28	11	SS	--	34	--	--												
658.90			29																		
657.90			30	12	SS	4.9	41	S	11												
656.90			31																		
655.90			32																		
654.90			33	13	SS	5.3	32	B	12												
653.90			34																		
652.90	Dense To Very Dense Gray Clay Till		35	14	SS	6.6	35	S	12												
651.90			36																		
650.90			37																		
649.90			38																		
648.90			39																		
647.90			40	15	SS	6.8	61	SS	10												
646.90			41																		

Groundwater Data: Static water table after auger removal - elevation 673.5.



Midwest Testing Services, Inc.
3705 Progress Blvd.
Peru, IL 61354

BORING LOG

Sheet 3 of 3

Phone: 815-223-6696
Fax: 815-223-6659
E-Mail: Midwest@TheRamp.net

Client: Hutchison Engineering, Inc.
 Project Name: Section 06-26142-01-BR TR-434
 Project Site: Stockland Township
Iroquois County, Illinois

Boring No. B-2
 Surface Elev. 687.90
 Auger Depth 51' Rotary Depth NA
 Start Date 05/27/07 Finish Date 05/27/07

Location: 6' Left of centerline
Station 19+45

(DEPTH) ELEV.	DESCRIPTION OF MATERIALS	Graphic Log	Depth in feet	SAMPLES						DRILLED BY		REMARKS									
				Sample No.	Sample Type	Qu (TSF)	N Value (Blows)	Bulge / Shear	Moisture (%)	Dry Density (PCF)											
645.90																					
644.90			43																		
643.90			44																		
642.90			45																		
641.90	Very Dense Yellowish Brown To Gray Sandy Loam Till		46	16	SS	--	100 9"	--	10												
640.90			47																		
639.90			48																		
638.90			49																		
637.90			50																		
636.90			51	17	SS	--	100 7"	--	10												
635.90			52																		
634.90			53																		
633.90			54																		
632.90			55																		
631.90			56																		
630.90			57																		
629.90			58																		
628.90			59																		
627.90			60																		
626.90			61																		
625.90			62																		

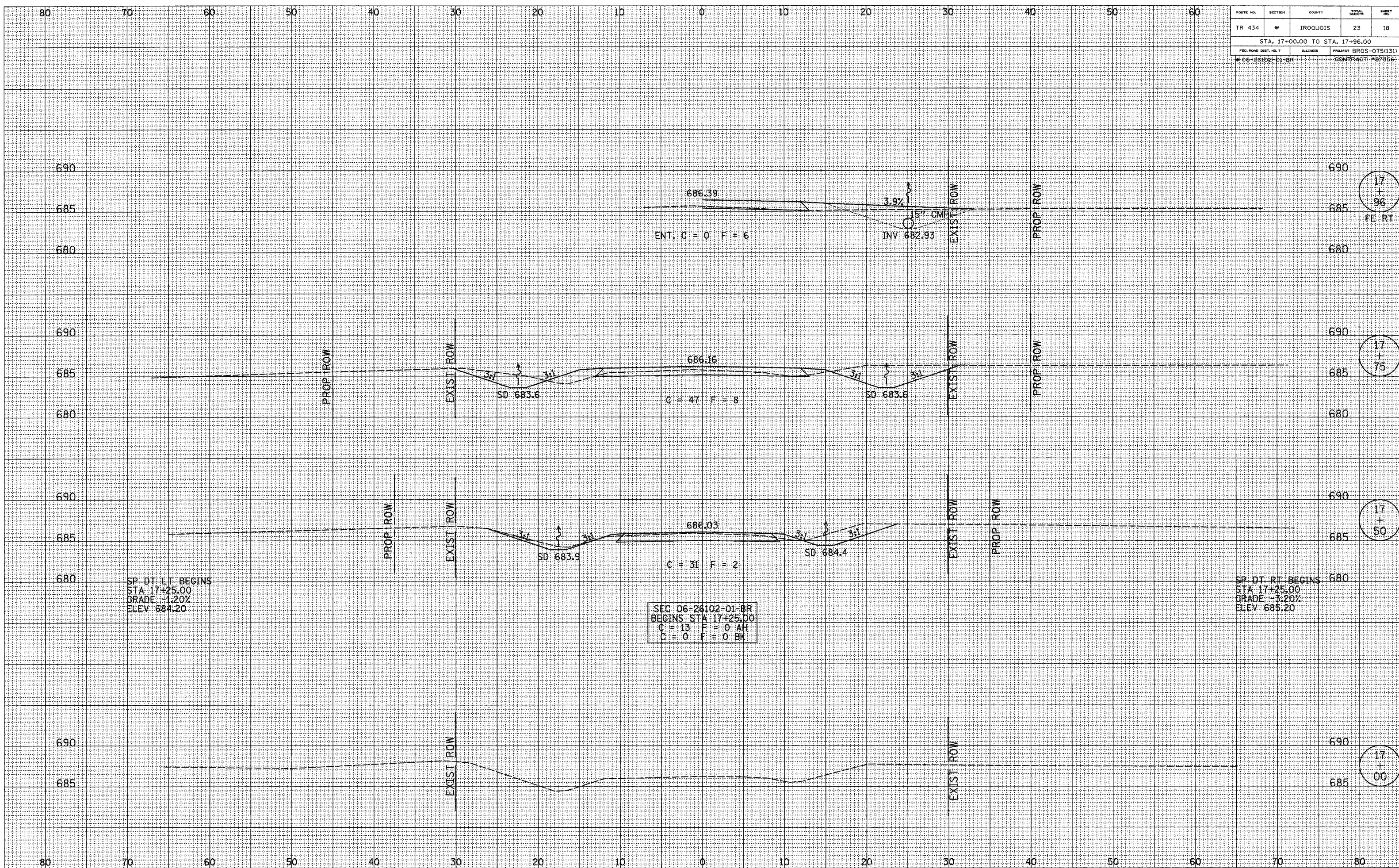
Groundwater Data: Static water table after auger removal - elevation 673.5.

SOIL BORING LOGS
 T.R. 434 OVER MUD CREEK
 SECTION 06-26102-01-BR
 IROQUOIS COUNTY
 STATION 20+00.00

ROUTE NO.	SECTION	COUNTY	TOTAL SHEETS	SHEET NO.
TR 434	*	IROQUOIS	23	18
STA. 17+00.00 TO STA. 17+96.00				
FED. ROAD DIST. NO. 7	BLANKETS	PROJECT	BROS-075(131)	
*06-26102-01-BR		CONTRACT #87356		

SURVEY NO. _____
 PLOTTED _____
 TEMPLATE _____
 AREAS CHECKED _____
 AREAS CHECKED _____

SURVEY NO. _____
 PLOTTED _____
 TEMPLATE _____
 AREAS CHECKED _____
 AREAS CHECKED _____



SEC 06-26102-01-BR
 BEGINS STA 17+25.00
 C = 13 F = 0 AH
 C = 0 F = 0 BK

SP-DT LT BEGINS
 STA 17+25.00
 GRADE -1.20%
 ELEV 684.20

SP-DT RT BEGINS
 STA 17+25.00
 GRADE -3.20%
 ELEV 685.20

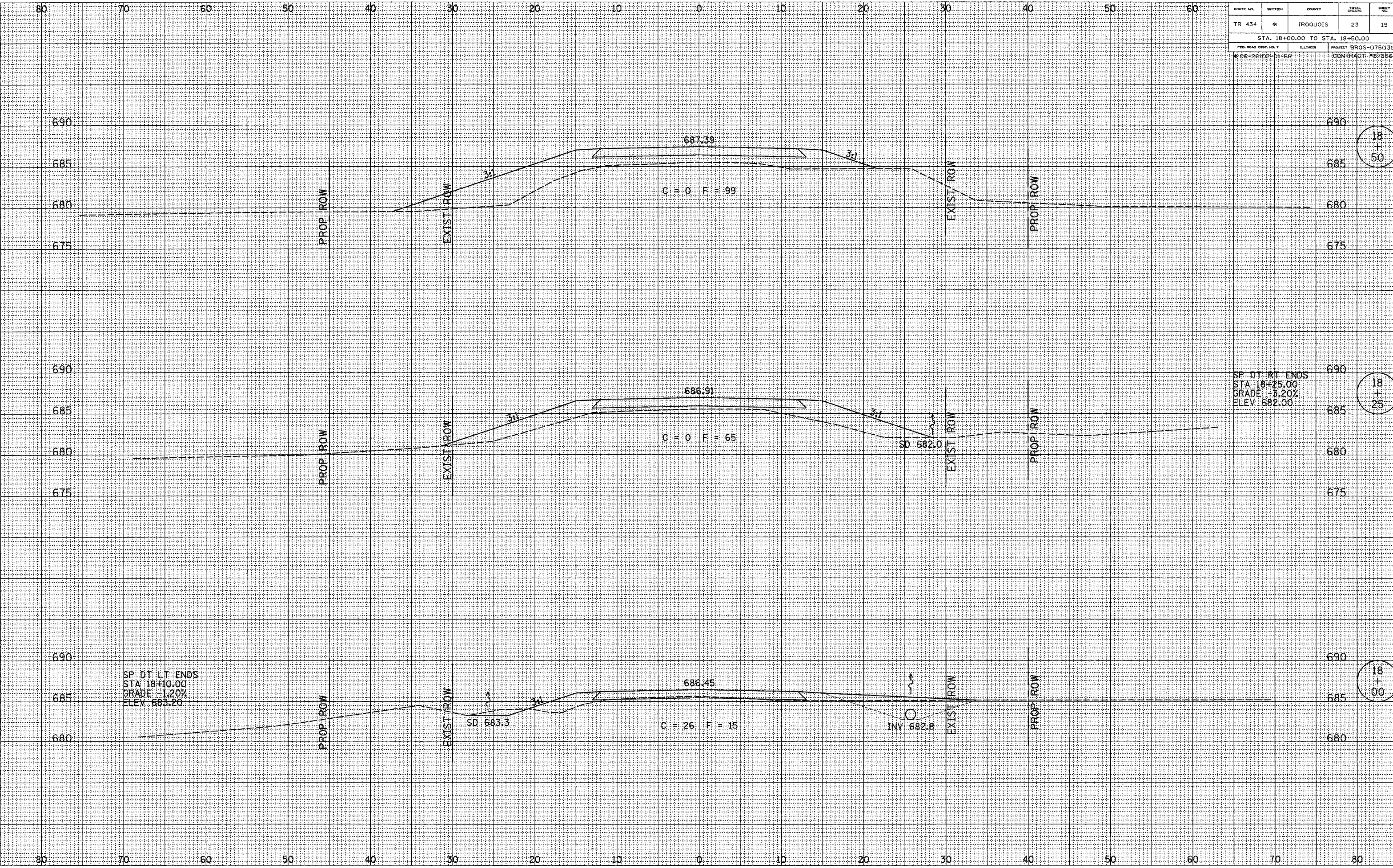
17+96

17+75

17+50

17+00

ROUTE NO.	SECTION	COUNTY	TOTAL SHEETS	SHEET NO.
TR 434	*	IROQUOIS	23	19
STA. 18+00.00 TO STA. 18+50.00				
FED. ROAD DIST. NO. 7		ILLINOIS	PROJECT BROS-075(131)	
*06+26102-D1-BH		CONTRACT #B7356		



18
+
50

SP DT RT ENDS
STA 18+25.00
GRADE -3.20%
ELEV 682.00

18
+
25

SP DT LT ENDS
STA 18+10.00
GRADE -1.20%
ELEV 683.20

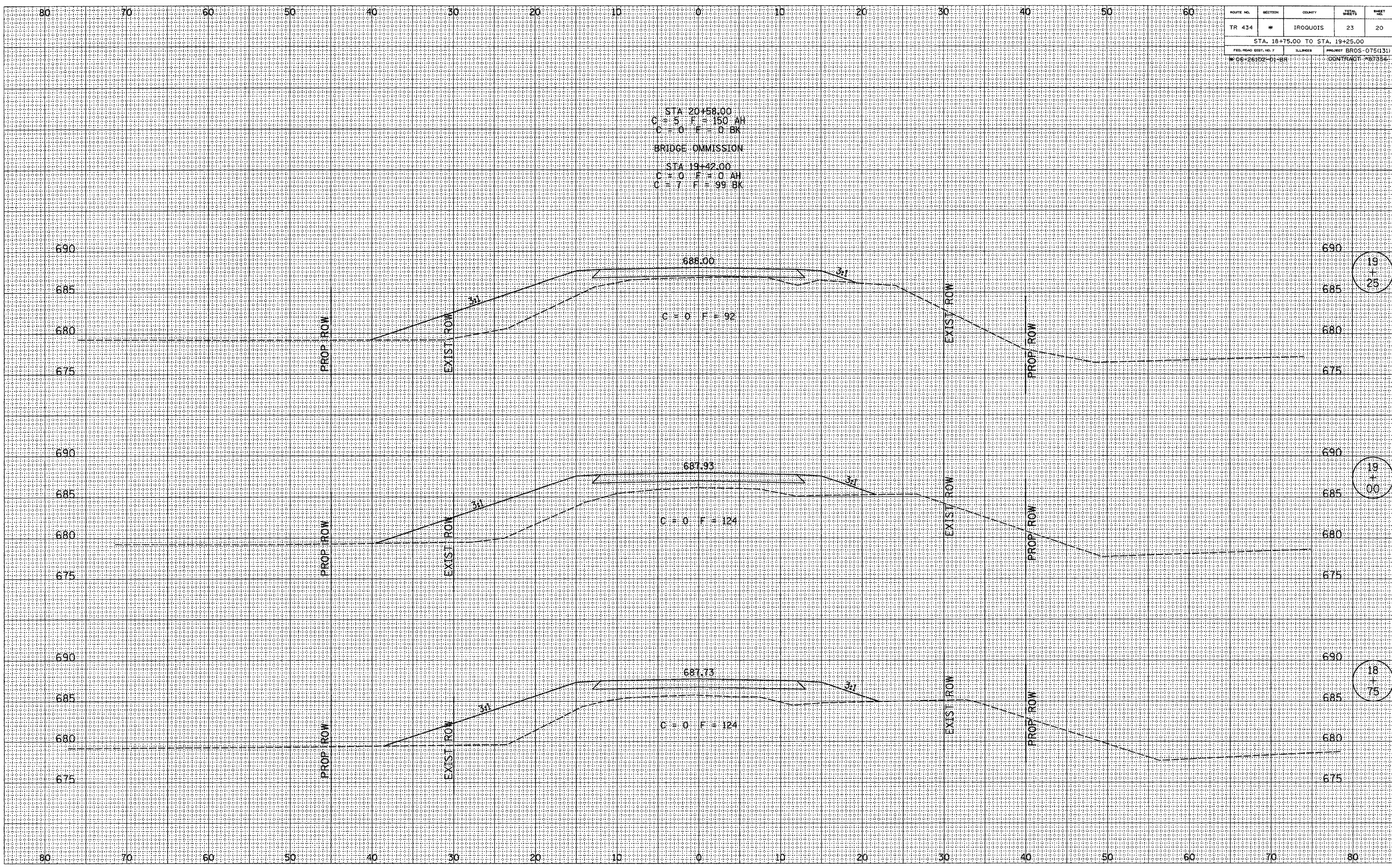
18
+
00

SURVEYED	DATE
NOTE BOOK	NO.
TEMPLATE	
AREAS CHECKED	

SURVEYED	DATE
NOTE BOOK	NO.
TEMPLATE	
AREAS CHECKED	

ROUTE NO.	SECTION	COUNTY	TOTAL SHEETS	SHEET NO.
TR 434	*	IROQUOIS	23	20
STA. 18+75.00 TO STA. 19+25.00				
FED. ROAD DIST. NO. 7	ILLINOIS	PROJECT	BROS-075(131)	
*06-26102-01-BR		CONTRACT #87356		

STA 20+58.00
 C = 5 F = 150 AH
 C = 0 F = 0 BK
 BRIDGE OMISSION
 STA 19+42.00
 C = 0 F = 0 AH
 C = 7 F = 99 BK



19
+
25

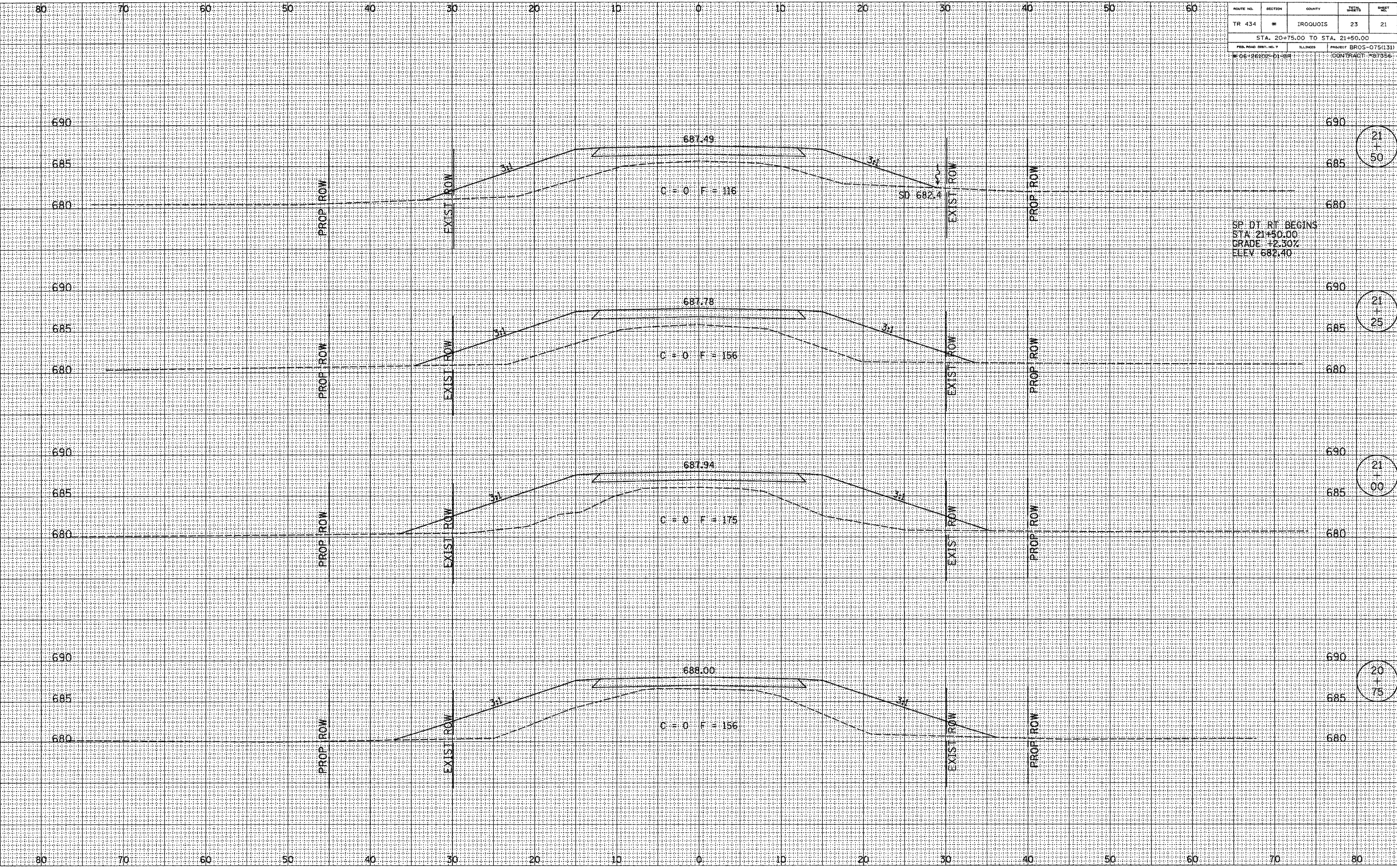
19
+
00

18
+
75

SURVEY PLOTTED
 NOTE BOOK TEMPLATE
 AREAS CHECKED

SURVEY PLOTTED
 NOTE BOOK TEMPLATE
 AREAS CHECKED

ROUTE NO.	SECTION	COUNTY	TOTAL SHEETS	SHEET NO.
TR 434	*	IROUOIS	23	21
STA. 20+75.00 TO STA. 21+50.00				
FED. ROAD DIST. NO. 7			PROJECT BROS-075(131)	
* 06-196102-D1-BH			CONTRACT #87356	



21
+
50

21
+
25

21
+
00

20
+
75

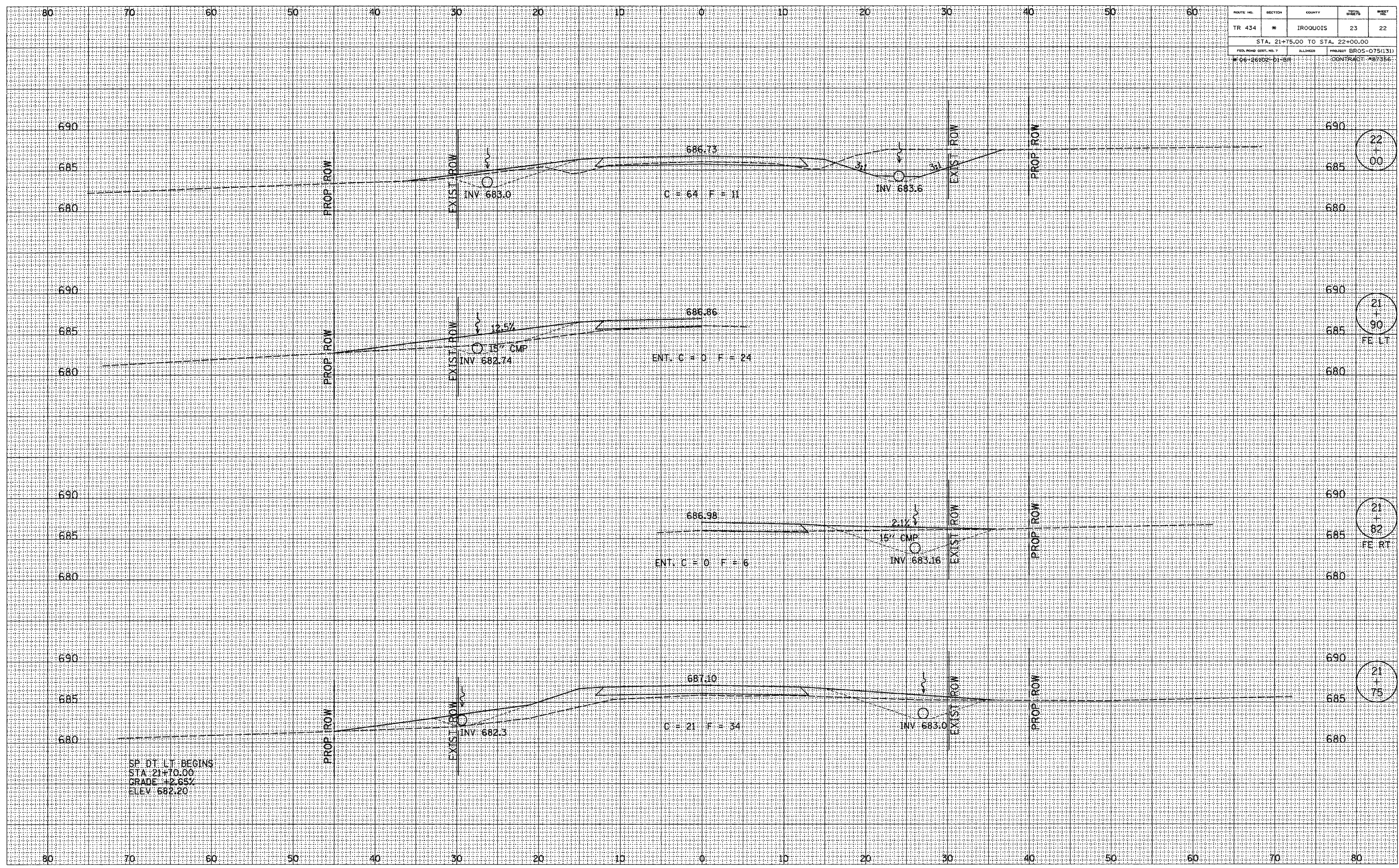
SURVEYED SURVEY SURVEYED
NOTE BOOK TEMPLATE AREAS CHECKED
NO.

SURVEY SURVEY SURVEYED
NOTE BOOK TEMPLATE AREAS CHECKED
NO.

ROUTE NO.	SECTION	COUNTY	TOTAL SHEETS	SHEET NO.
TR 434	*	IRROQUOIS	23	22
STA. 21+75.00 TO STA. 22+00.00				
FED. ROAD DIST. NO. 7	ILLINOIS	PROJECT BROS-075(31)	CONTRACT #87356	

SURVEYED	SURVEY
NOTE BOOK	TEMPLATE
AREAS CHECKED	
NO.	

SURVEYED	SURVEY
NOTE BOOK	TEMPLATE
AREAS CHECKED	
NO.	



SP. DT. LT. BEGINS
 STA. 21+70.00
 GRADE +2.65%
 ELEV 682.20

22
+
00

21
+
90
FE LT

21
+
82
FE RT

21
+
75

ROUTE NO.	SECTION	COUNTY	TOTAL SHEETS	SHEET NO.
TR 434	*	IROQUOIS	23	23
STA. 22+25.00 TO STA. 23+00.00				
FED. ROAD DIST. NO. 7		ILLINOIS	PROJECT BROS-075(131)	
* 06-26102-01-BR		CONTRACT #87356		

SURVEYED _____
 SURVEY _____
 NOTE BOOK _____
 TEMPLATE _____
 AREAS _____
 CHECKED _____
 NO. _____

SURVEYED _____
 SURVEY _____
 NOTE BOOK _____
 TEMPLATE _____
 AREAS _____
 CHECKED _____
 NO. _____

