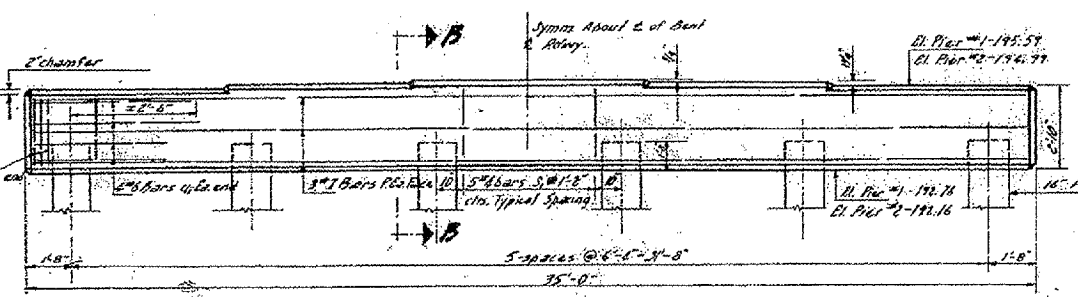
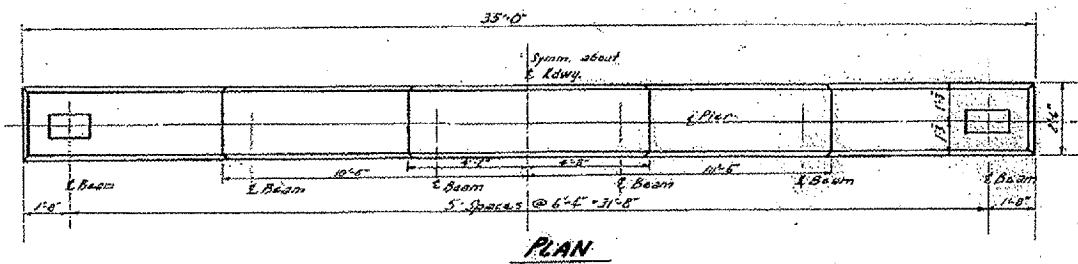
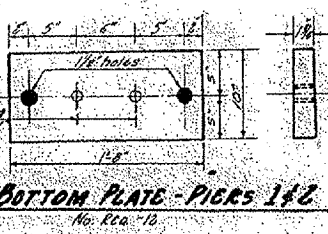
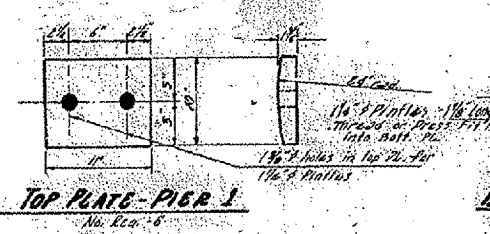
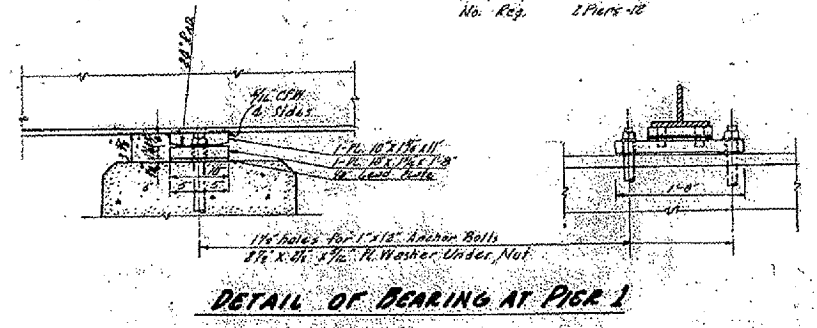
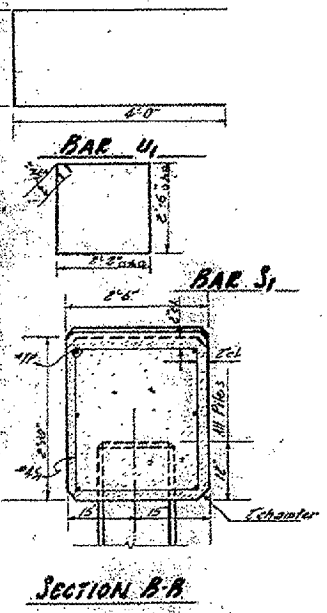


F.A.P. RTE.	SECTION	COUNTY	TOTAL SHEETS	SHEET NO.
310	.	..	97	34
STA. TO STA.				
FED. ROAD DIST. NO.			ILLINOIS FED. AID PROJECT	

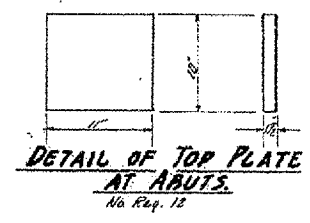
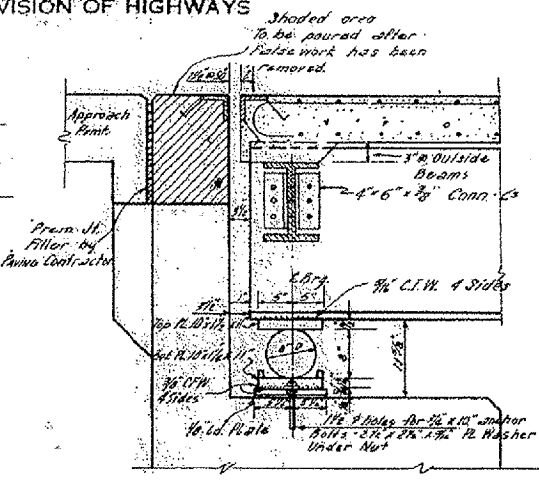
STATE OF ILLINOIS
DEPARTMENT OF PUBLIC WORKS & BUILDINGS
DIVISION OF HIGHWAYS



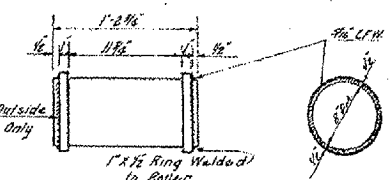
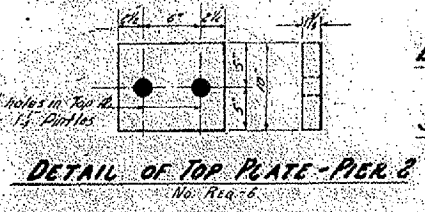
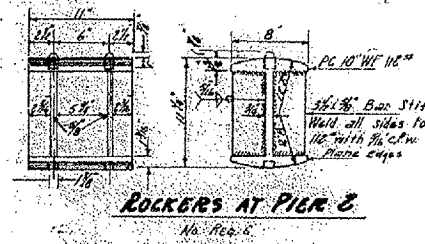
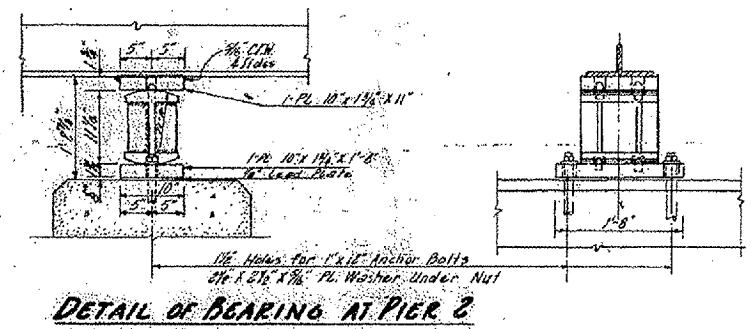
Pier Piers
14" Precast Concrete
Elev. Length 40 FT.
Min. Curb 35' 700's
No. Req. 2 Piers



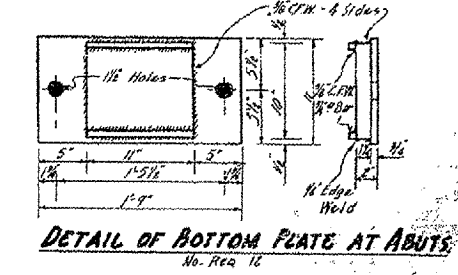
Notes:
Bearing Plates in contact with the rollers shall have the edges adjacent to the rollers rolled, cut square or finished.
Lead Plates, Rollers, Rockers, Purlins, Anchor Bolts and Bearing Plates shall be paid for as structural steel. Their weight included in Bill of Material on Sheet No. 88798-2.
All welds unless otherwise noted shall be 1/4" continuous fillet.
Paint Rollers & Rockers Same as Structural Steel.



DETAIL OF BEARINGS AT ABUT.



Note: If roller is turned from a solid piece the 1/2" and projections may be omitted.
No. Req. 12



BILL OF MATERIAL - 2 PIERS

BAR	No.	SIZE	LENGTH	SHAPE
P	12	"9	11'-6"	
S	60	"4	10'-11"	
U	16	"4	10'-1"	
Class 2 Concrete Cu Yds. 18.0				
Reinforcement Bars Lbs. 1510				
14" Precast Concrete Piers (40) Lin. Ft. 440				
Test Piles - 20				

**PIERS & BEARING DETAILS
BRIDGE OVER MIDDLE HENDERSON CREEK**

S.B.I. Pt. 3
WARREN COUNTY
STA. 829 + 24

DESIGNED	Nov 20 1953
CHECKED	W.B. Hanson
DRAWN	E. Knight
CHECKED	M.V.C.

FOR INFORMATION ONLY

REVISIONS	
NAME	DATE

ILLINOIS DEPARTMENT OF TRANSPORTATION
FOR INFORMATION ONLY
EXISTING S.N. 094-0002
MIDDLE HENDERSON CREEK
1954
SCALE: VERT. HORIZ.
DATE
DRAWN BY
CHECKED BY