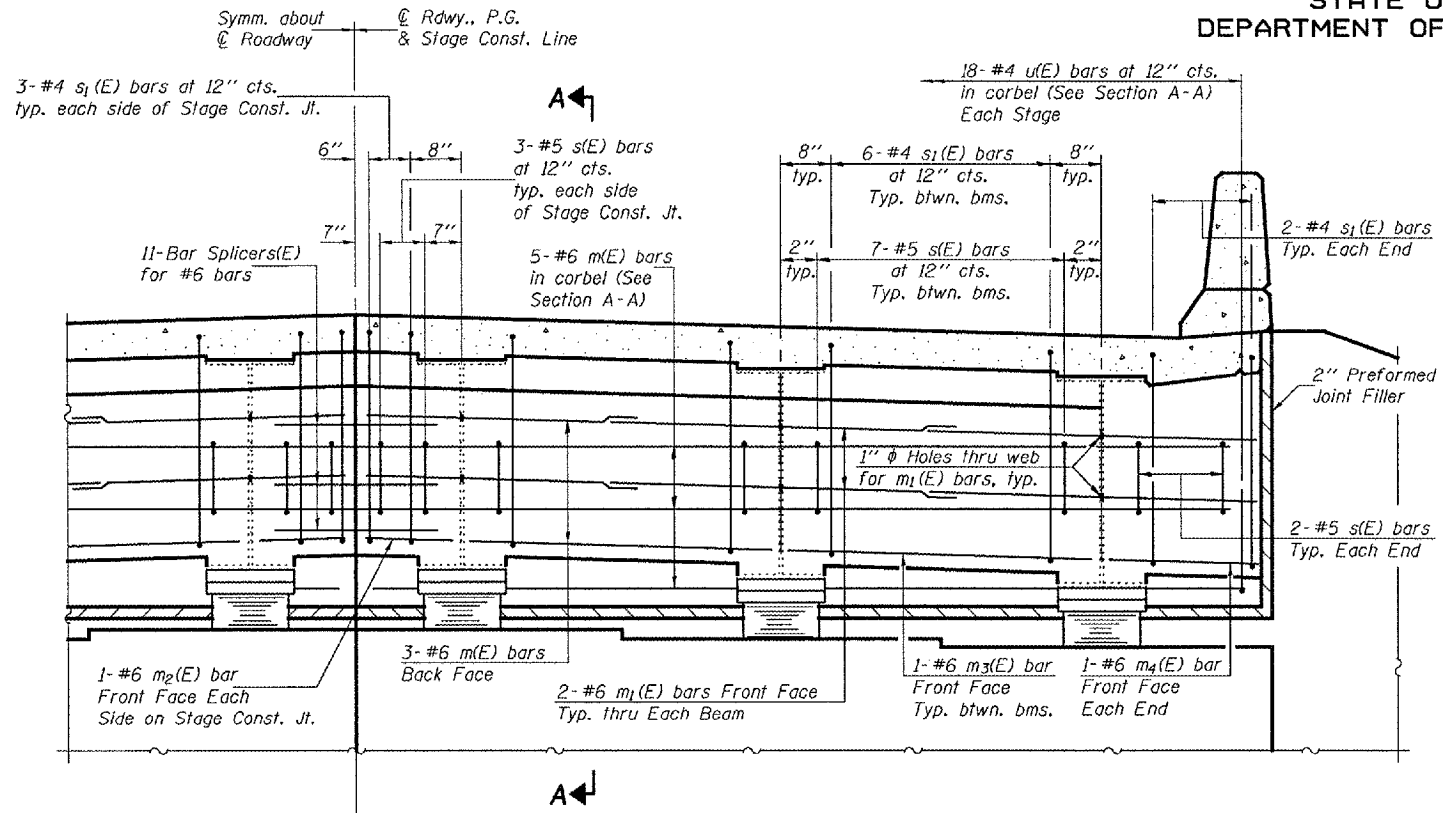


STATE OF ILLINOIS
DEPARTMENT OF TRANSPORTATION

ROUTE NO.	SECTION	COUNTY	SHEET	PAGE	SHEET NO.
F.A.P. 310	28BR-1	WARREN	97	57	16 SHEETS
FED. ROAD DIST. NO. 7		ILLINOIS		FED. AID PROJECT	

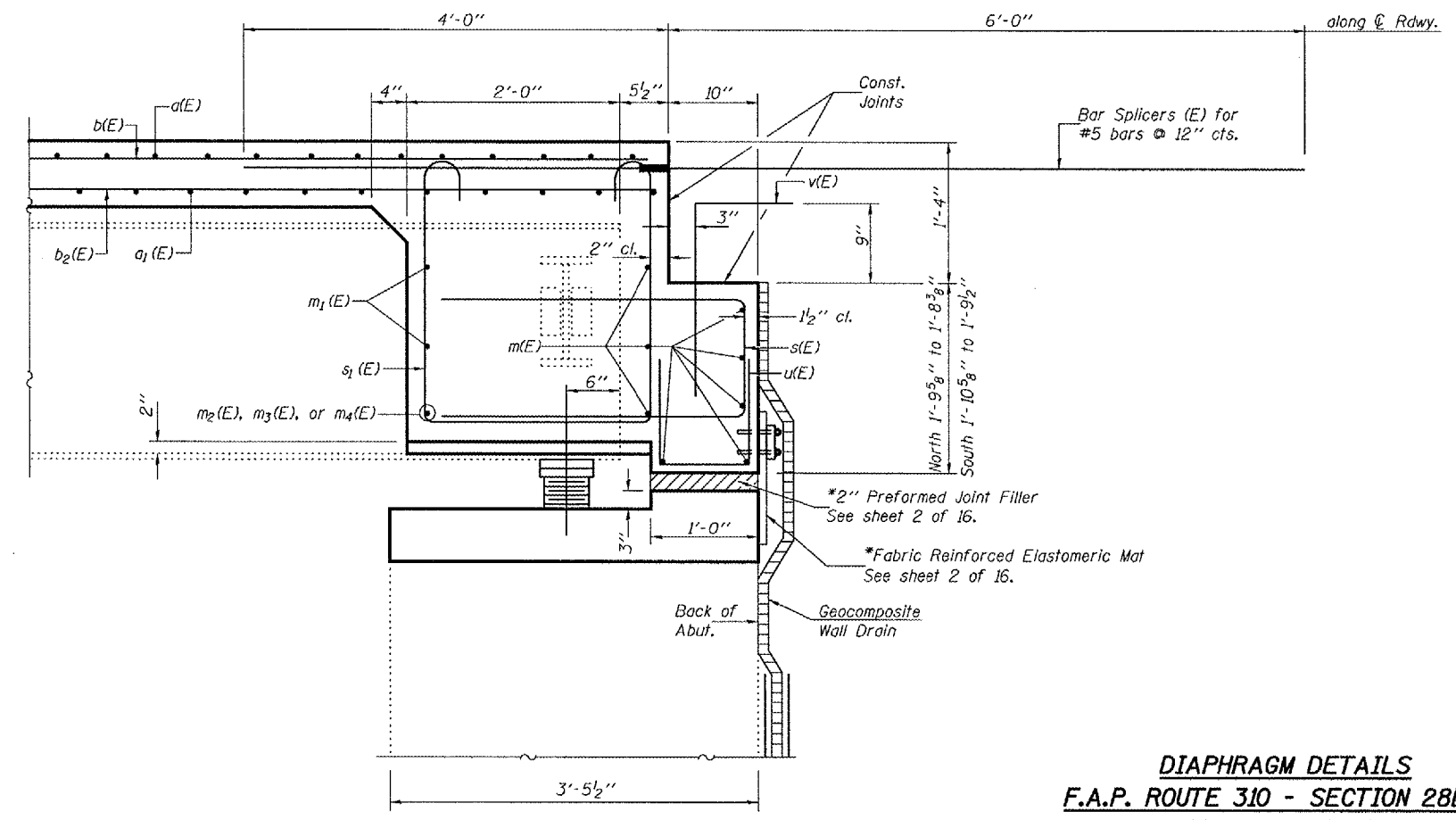
Contract #88798



Notes:
Reinforcement bars in diaphragm are billed with superstructure on sheet 8 of 16.
Concrete in diaphragm is included with Concrete Superstructure on sheet 8 of 16.
For Bar Splicer (E) details see sheet 16 of 16.
Cost of Field Drilling 1" ϕ holes for $m_1(E)$ bars included with Concrete Superstructures.

MIN. BAR LAP
#6 bar = 2'-7"

DIAPHRAGM ELEVATION AT ABUTMENT
(Half of diaphragm shown, other half is similar)



SECTION A-A
* Cost included with Concrete Superstructure.

DIAPHRAGM DETAILS
F.A.P. ROUTE 310 - SECTION 28BR-1
WARREN COUNTY
STATION 829+24.00
STRUCTURE NO. 094-0002

DESIGNED	Tom L. Kurtenbach	September 4, 2007
CHECKED	Alan M. Johnson	EXAMINED <i>Thomas J. Domagala</i>
DRAWN	BECKY M. CURRY	PASSED <i>Ralph J. Anderson</i>
CHECKED	TLK/AMJ	