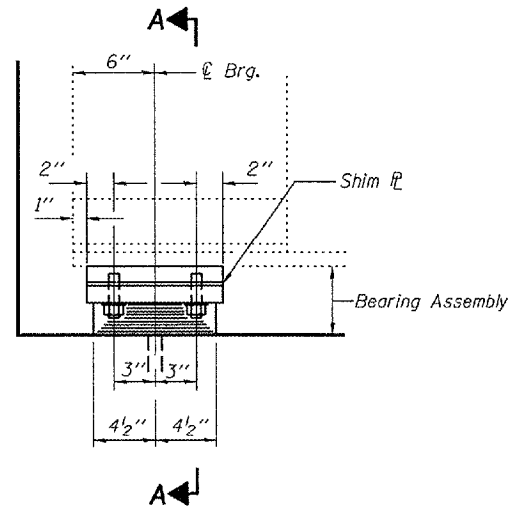


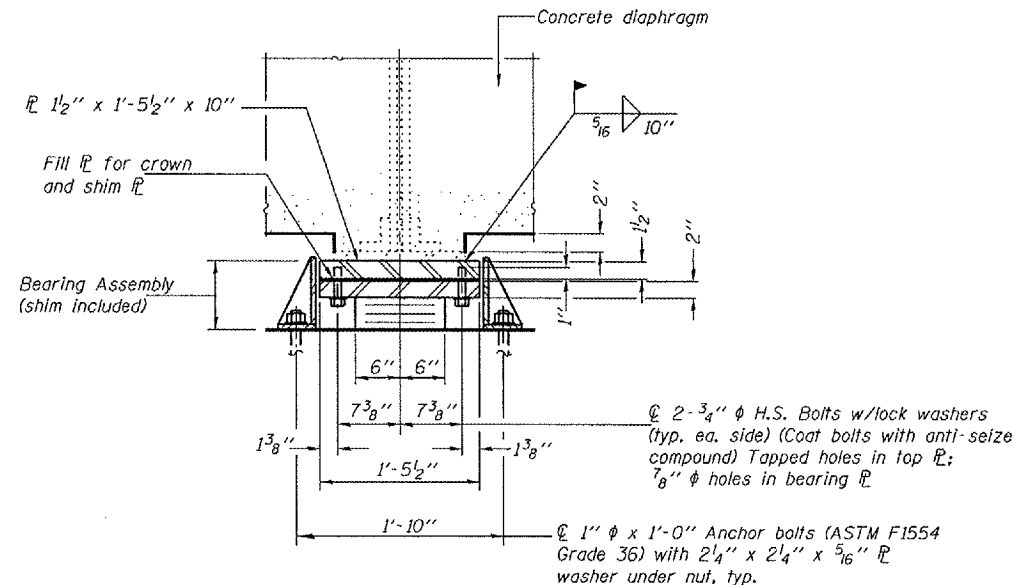
STATE OF ILLINOIS
DEPARTMENT OF TRANSPORTATION

ROUTE NO. 310	SECTION 28BR-1	COUNTY WARREN	SHEET NO. 97	SHEET 60	SHEET NO. 12 16 SHEETS
FED. ROAD DIST. NO. 7		ILLINOIS	FED. AID PROJECT		

Contract #88798



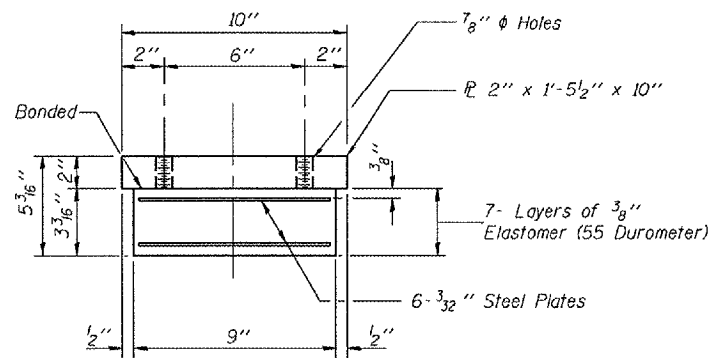
ELEVATION AT S. ABUT.



SECTION A-A

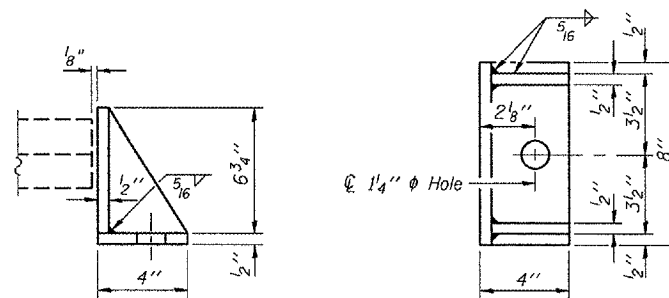
TYPE I ELASTOMERIC EXP. BRG.

Notes:
Anchor bolts shall be ASTM F1554 all-thread (or an Engineer-approved alternate material) of the grade(s) and diameter(s) specified. ASTM A307 Grade C anchor bolts may be used in lieu of ASTM F1554 Grade 36 (Fy=36ksi). The corresponding specified grade of AASHTO M314 anchor bolts may be used in lieu of ASTM F1554.
Drilled and set anchor bolts shall be installed according to Article 521.06 of the Standard Specifications.
Side retainers and other steel members required for the bearing assembly shall be included in the cost of Elastomeric Bearing Assembly, Type I.
Two 1/8 in. adjusting shims shall be provided for each bearing in addition to all other plates or shims and placed as shown on bearing details.
Provide 1/8" Shim Plates for bearings 2 and 5.
See sheet 10 of 16 for Jack and Remove Existing Bearings.
Cost of field welding is included in Elastomeric Bearing Assembly, Type I.



BEARING ASSEMBLY
(6 Required)

Note:
Shim plates shall not be placed under Bearing Assembly.



SIDE RETAINER

Equivalent rolled angle with stiffeners will be allowed in lieu of welded plates. Weight included with Structural Steel.

BILL OF MATERIAL

Item	Unit	Total
Elastomeric Bearing Assembly Type I	Each	6
Anchor Bolts 1" φ	Each	12

DESIGNED Tom L. Kurtenbach	September 4, 2007
CHECKED Alan M. Johnson	EXAMINED <i>Thomas J. Demasak</i>
DRAWN BECKY M. CURRY	PASSED <i>Ralph E. Anderson</i>
CHECKED TLK/AMJ	

BEARING AT SOUTH ABUTMENT
F.A.P. ROUTE 310 - SECTION 28BR-1
WARREN COUNTY
STATION 829+24.00
STRUCTURE NO. 094-0002