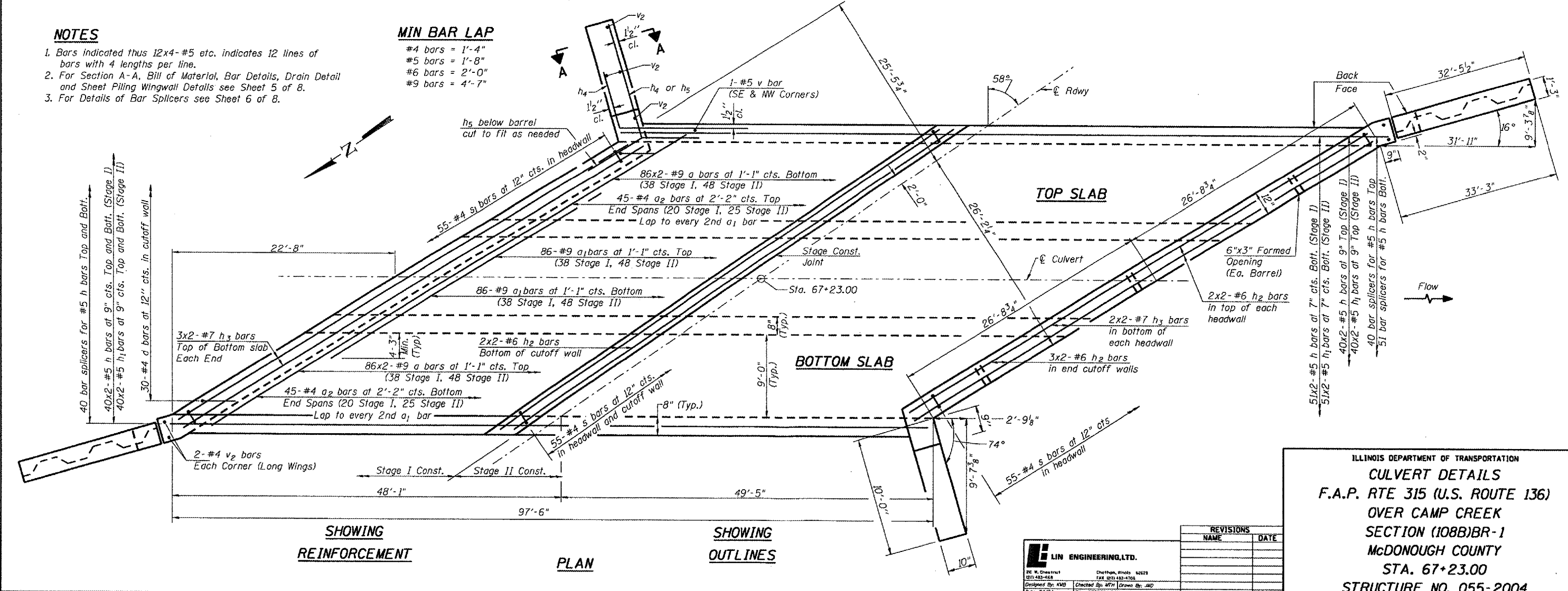


NOTES

1. Bars indicated thus 12x4-#5 etc. indicates 12 lines of bars with 4 lengths per line.
2. For Section A-A, Bill of Material, Bar Details, Drain Detail and Sheet Piling Wingwall Details see Sheet 5 of 8.
3. For Details of Bar Splicers see Sheet 6 of 8.

MIN BAR LAP

- #4 bars = 1'-4"
- #5 bars = 1'-8"
- #6 bars = 2'-0"
- #9 bars = 4'-7"



LIN ENGINEERING, LTD.
 20 W. Chestnut
 Chicago, Illinois 60629
 (312) 463-1648
 Fax: (312) 463-1708
 Designed By: KMB
 Checked By: MFM
 Date: 04/04
 File: 0552004.DWG

REVISIONS	
NAME	DATE

ILLINOIS DEPARTMENT OF TRANSPORTATION
CULVERT DETAILS
 F.A.P. RTE 315 (U.S. ROUTE 136)
 OVER CAMP CREEK
 SECTION (108B)BR-1
 McDONOUGH COUNTY
 STA. 67+23.00
 STRUCTURE NO. 055-2004