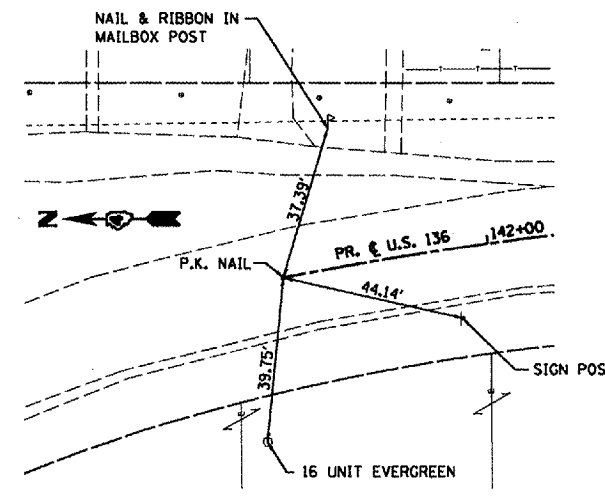
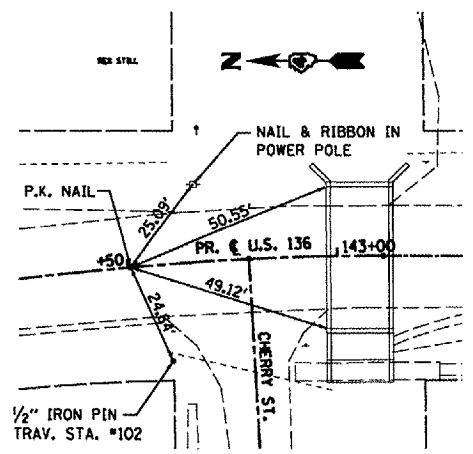


F.A. RTE.	SECTION	COUNTY	TOTAL SHEETS	SHEET NO.
315	1108BIBR-BR-1	McDONOUGH	80	40
STA. 141+50.31		TO STA. 144+50.00		
FED. ROAD DIST. NO.		ILLINOIS FED. AID PROJECT		
CONTRACT NO. 88799				



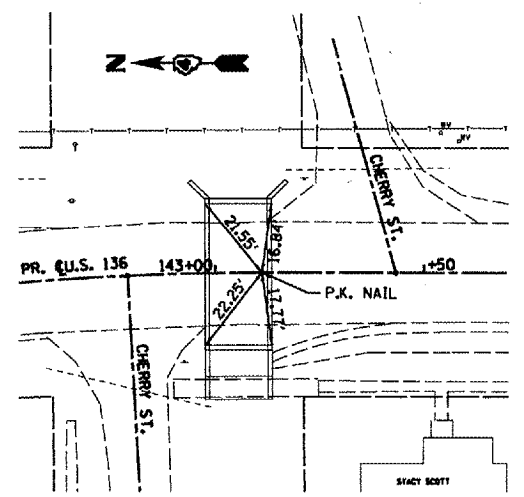
PC STA. 141+50.31

NOT TO SCALE



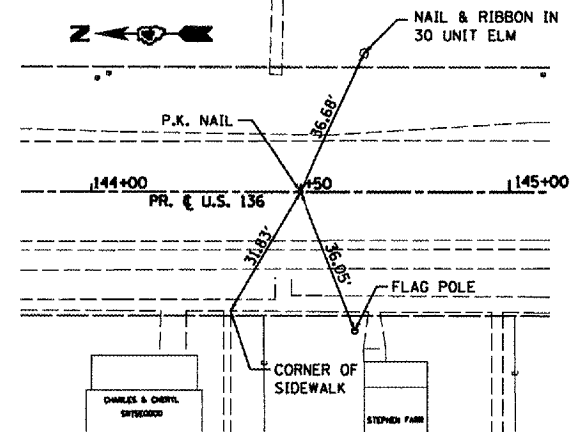
PCC STA. 142+50.69

NOT TO SCALE



PT STA. 143+11.15

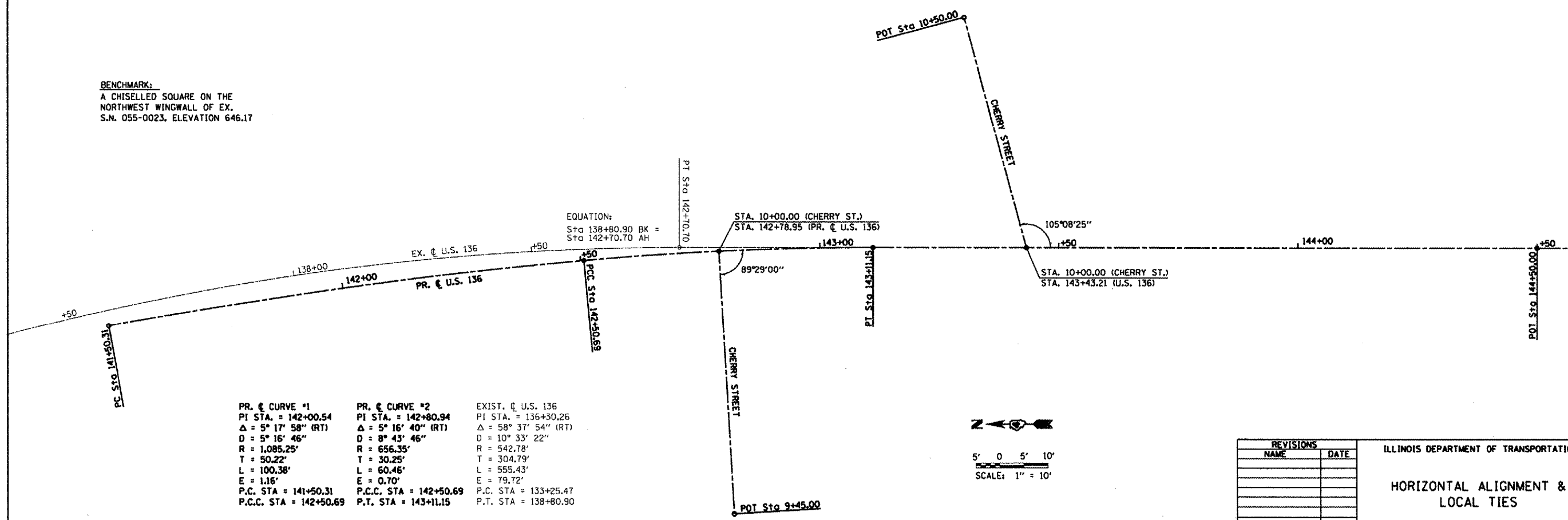
NOT TO SCALE



POT STA. 144+50.00

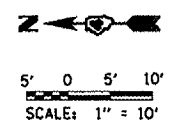
NOT TO SCALE

BENCHMARK:
A CHISELLED SQUARE ON THE
NORTHWEST WINGWALL OF EX.
S.N. 055-0023, ELEVATION 646.17



EQUATION:
Sta 138+80.90 BK =
Sta 142+70.70 AH

PR. of CURVE #1 PI STA. = 142+00.54 Δ = 5° 17' 58" (RT) D = 5° 16' 46" R = 1,085.25' T = 50.22' L = 100.38' E = 1.16' P.C. STA = 141+50.31 P.C.C. STA = 142+50.69	PR. of CURVE #2 PI STA. = 142+80.94 Δ = 5° 16' 40" (RT) D = 8° 43' 46" R = 656.35' T = 30.25' L = 60.46' E = 0.70' P.C.C. STA = 142+50.69 P.T. STA = 143+11.15	EXIST. of U.S. 136 PI STA. = 136+30.26 Δ = 58° 37' 54" (RT) D = 10° 33' 22" R = 542.78' T = 304.79' L = 555.43' E = 79.72' P.C. STA = 133+25.47 P.T. STA = 138+80.90
--	---	---



REVISIONS	
NAME	DATE

ILLINOIS DEPARTMENT OF TRANSPORTATION

HORIZONTAL ALIGNMENT & LOCAL TIES

SCALE: 1" = 10'
DATE: MARCH, 2006

DRAWN BY: JH
CHECKED BY: FML