

F.A. RTE.	SECTION	COUNTY	TOTAL SHEET NO.
315	(10)BBR, BR-1	MCDONOUGH	80/44
STA. 142+02.50 TO STA. 144+10.00			
FED. ROAD DIST. NO. - ILLINOIS FED. AID PROJECT			
CONTRACT NO. 88799			

BENCHMARK:
A CHISELLED SQUARE ON THE NORTHWEST CORNER OF EX. S.N. 055-0023, ELEVATION 646.17

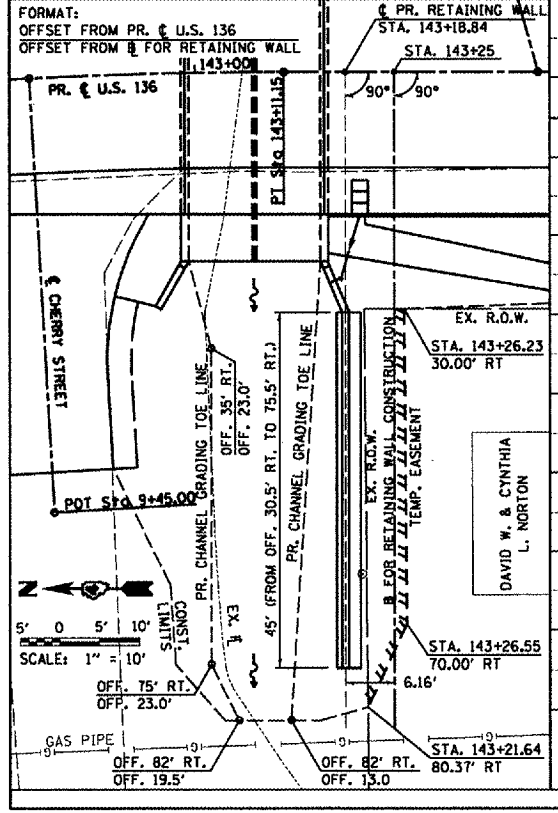
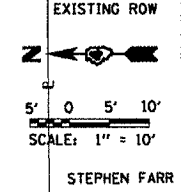
EXIST. ϕ U.S. 136
 P.I. STA. = 136+30.26
 $\Delta = 58^\circ 37' 54''$ (RT)
 $D = 10^\circ 33' 22''$
 $R = 542.78'$
 $L = 304.79'$
 $E = 555.43'$
 $F = 79.72'$
 P.C. STA. = 133+25.47
 P.T. STA. = 138+80.90

PR. ϕ CURVE #1
 P.I. STA. = 142+00.54
 $\Delta = 5^\circ 17' 58''$ (RT)
 $D = 5^\circ 16' 46''$
 $R = 1,085.25'$
 $L = 30.22'$
 $E = 100.38'$
 $F = 1.16'$
 P.C. STA. = 141+50.31
 P.C.C. STA. = 142+50.69

PR. ϕ CURVE #2
 P.I. STA. = 142+80.94
 $\Delta = 5^\circ 16' 40''$ (RT)
 $D = 8^\circ 43' 46''$
 $R = 656.35'$
 $L = 60.46'$
 $E = 0.70'$
 P.C.C. STA. = 142+50.69
 P.T. STA. = 143+11.15

STA. 10+00.00 (CHERRY ST.)
 STA. 142+78.95 (ϕ U.S. 136)
 $32.0'$ R
 EXISTING 12" CMP TO BE REMOVED

- NOTES:**
1. SEE SCHEDULE OF QUANTITIES FOR REMOVAL LOCATIONS.
 2. APPLY SEEDING CLASS 2 & MULCH METHOD 2 WITHIN CONSTRUCTION LIMITS.
 3. SEE BRIDGE APPROACH PAVEMENT DETAIL SHEET FOR TY. C INLET, PIPE DRAINS AND OTHER DETAILS NOT SHOWN.



142+00	142+25	142+50	142+75	143+00	143+25	143+50	143+75	144+00	144+25	144+50
647.43	647.31	647.11	647.16	647.03	647.08	647.00	647.03	647.05	647.06	647.34

DATE	BY

DATE	BY