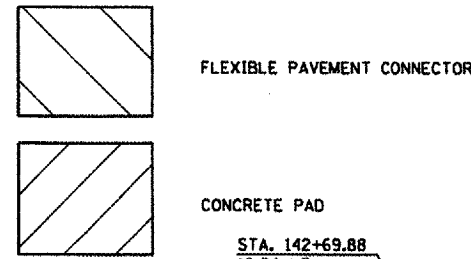


NOTE:

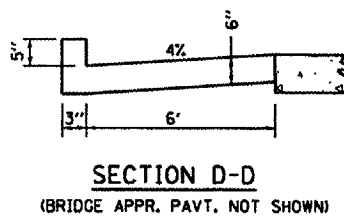
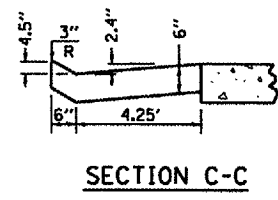
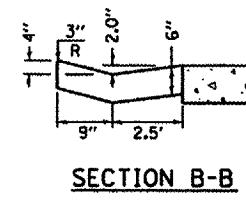
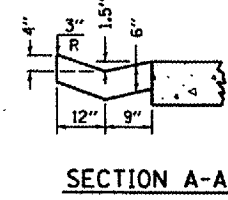
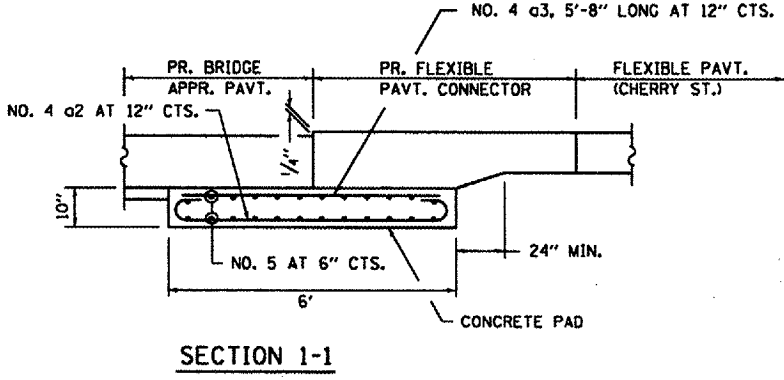
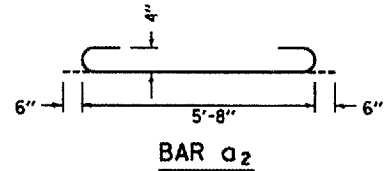
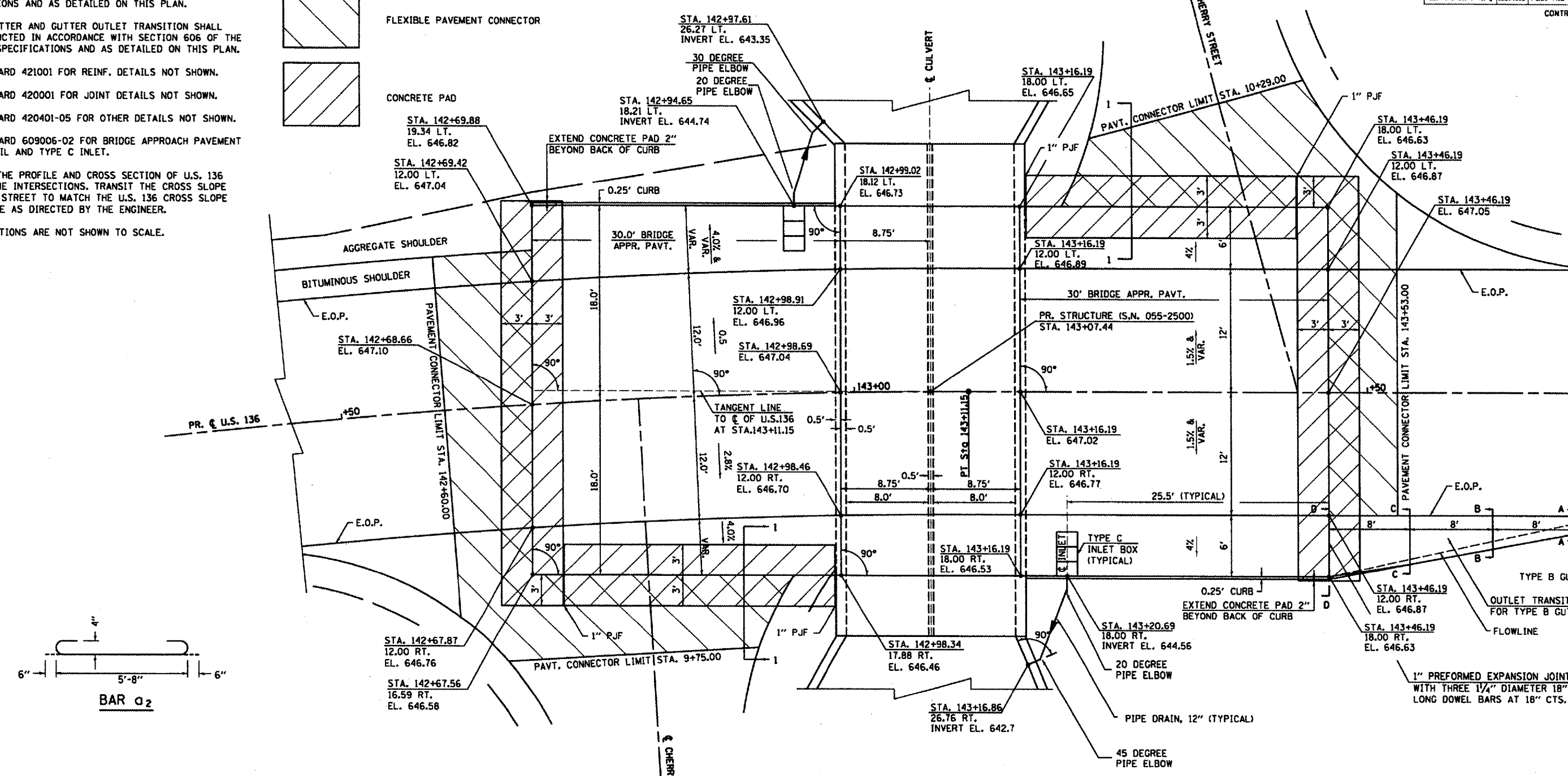
- BRIDGE APPROACH PAVEMENT SHALL BE CONSTRUCTED IN ACCORDANCE WITH SECTION 420 OF THE STANDARD SPECIFICATIONS AND AS DETAILED ON THIS PLAN.
- TYPE B GUTTER AND GUTTER OUTLET TRANSITION SHALL BE CONSTRUCTED IN ACCORDANCE WITH SECTION 606 OF THE STANDARD SPECIFICATIONS AND AS DETAILED ON THIS PLAN.
- SEE STANDARD 421001 FOR REINF. DETAILS NOT SHOWN.
- SEE STANDARD 420001 FOR JOINT DETAILS NOT SHOWN.
- SEE STANDARD 420401-05 FOR OTHER DETAILS NOT SHOWN.
- SEE STANDARD 609006-02 FOR BRIDGE APPROACH PAVEMENT DRAIN DETAIL AND TYPE C INLET.
- MAINTAIN THE PROFILE AND CROSS SECTION OF U.S. 136 THROUGH THE INTERSECTIONS. TRANSIT THE CROSS SLOPE OF CHERRY STREET TO MATCH THE U.S. 136 CROSS SLOPE AND PROFILE AS DIRECTED BY THE ENGINEER.
- CROSS SECTIONS ARE NOT SHOWN TO SCALE.

LEGEND

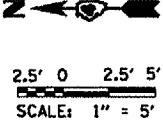


F.A. RTE.	SECTION	COUNTY	TOTAL SHEETS	SHEET NO.
315	(108B)BR-BR-1	MCDONOUGH	80	55
STA. _____ TO STA. _____				
FED. ROAD DIST. NO. ILLINOIS FED. AID PROJECT				

CONTRACT NO. 88799



OUTLET TRANSITION



REVISIONS	
NAME	DATE
DML	7/24/00
deleted thru	block
added elbows	

ILLINOIS DEPARTMENT OF TRANSPORTATION

**BRIDGE APPROACH PAVEMENT,
(SPECIAL) AND GUTTER OUTLET
TRANSITION FOR TYPE B GUTTER**

SCALE: 1" = 5'
DATE: MARCH, 2006

DRAWN BY: JH
CHECKED BY: FML