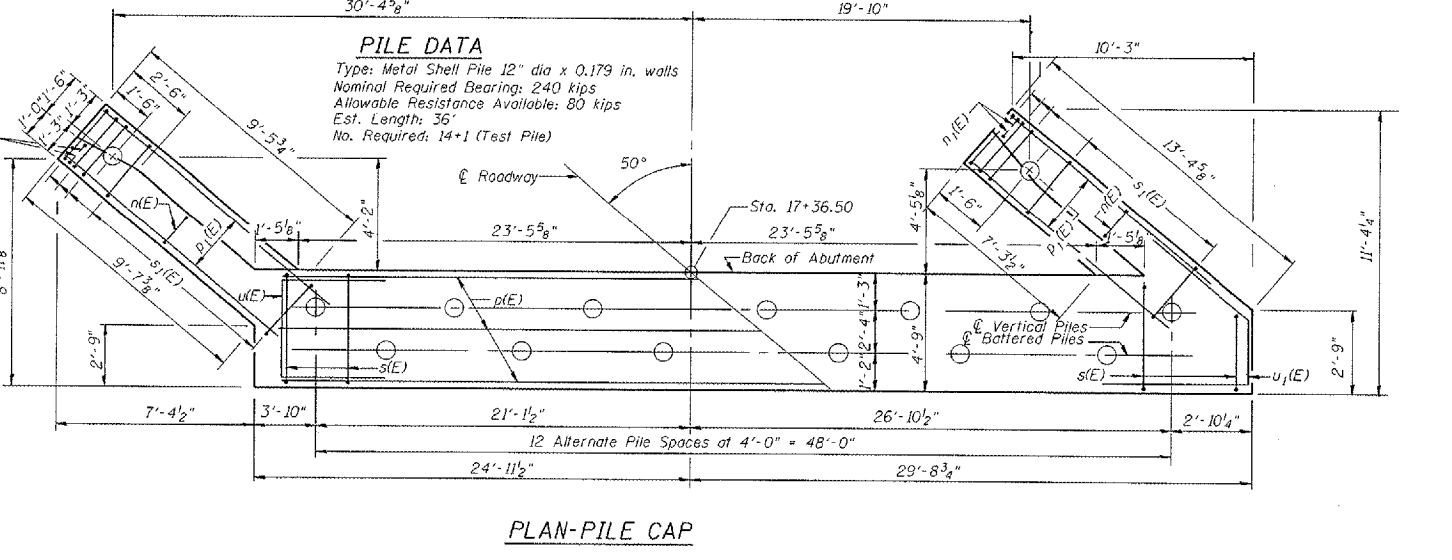
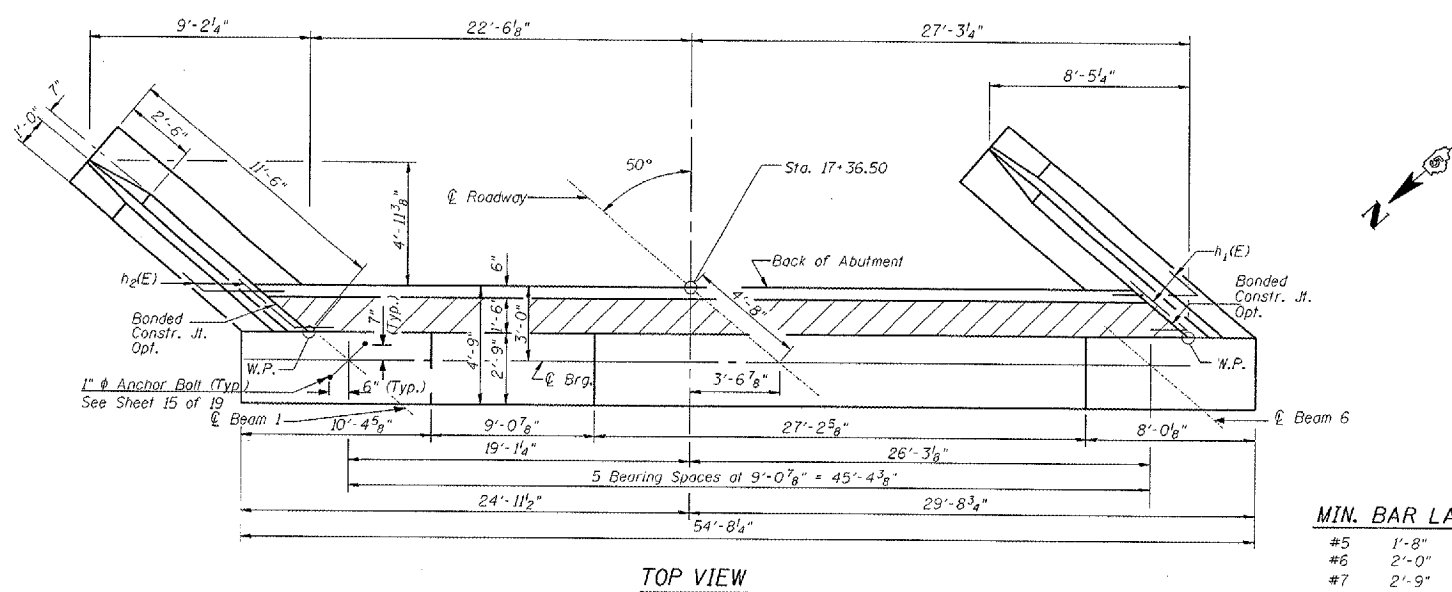
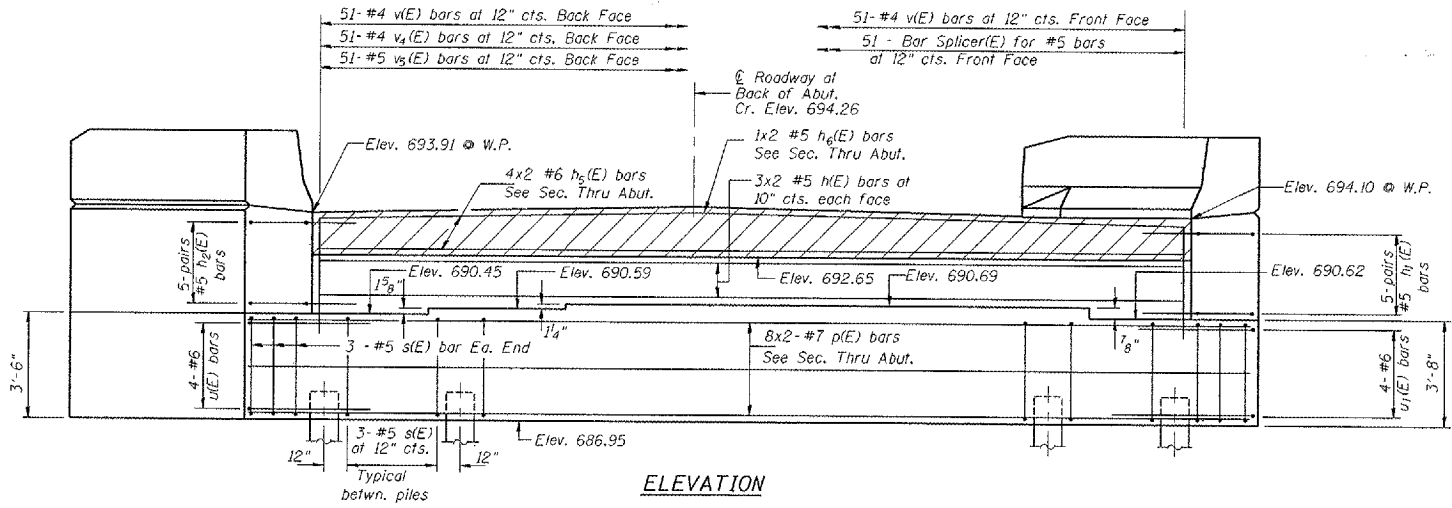
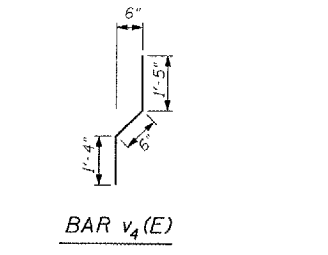
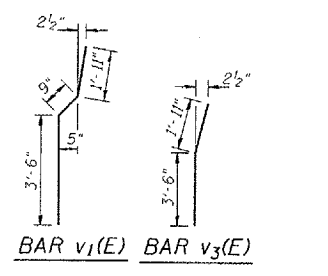
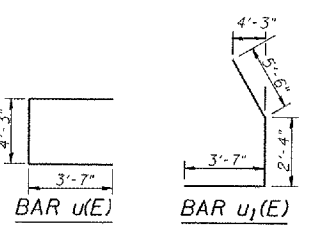
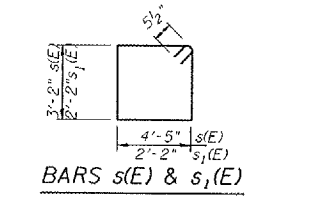
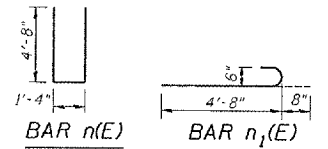
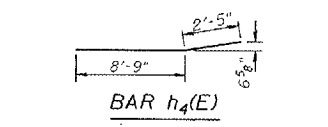
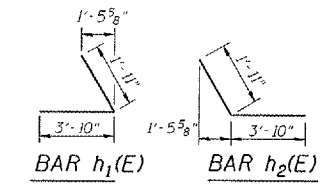


F.A.S. RTE.	SECTION	COUNTY	TOTAL SHEETS	SHEET NO.
1513	SBR-1	CHAMPAIGN	38	21
STA.		TO STA.		
FED. ROAD DIST. NO. 5 ILLINOIS FED. AID PROJECT				
SHEET 10 OF 19 SHEETS				



EAST ABUTMENT BILL OF MATERIAL

Bar No.	Size	Length (ft.)	Shape
n(E)	#5	26'-6"	
n ₁ (E)	#5	5'-9"	
n ₂ (E)	#5	5'-9"	
n ₃ (E)	#4	12'-10"	
n ₄ (E)	#4	11'-2"	
n ₅ (E)	#6	25'-9"	
n ₆ (E)	#5	25'-9"	
n ₇ (E)	#4	9'-4"	
n ₈ (E)	#4	11'-2"	
n ₉ (E)	#6	10'-8"	
n ₁₀ (E)	#6	5'-4"	
p(E)	#7	28'-6"	
p ₁ (E)	#7	11'-5"	
s(E)	#5	16'-1"	
s ₁ (E)	#5	9'-7"	
u(E)	#6	11'-5"	
u ₁ (E)	#6	11'-5"	
v(E)	#4	4'-8"	
v ₁ (E)	#6	6'-2"	
v ₂ (E)	#6	6'-0"	
v ₃ (E)	#6	5'-5"	
v ₄ (E)	#4	3'-3"	
v ₅ (E)	#5	2'-6"	
Structure Excavation	Cu Yd.	170	
Concrete Structures	Cu Yd.	53.1	
Reinforcement Bars, Epoxy Coated	Pound	4990	
Concrete Sealer	Sq. Ft.	150	
Furnishing Metal Shell Piles, 12"x0.175"	Ft.	504	
Driving Piles	Ft.	504	
Test Pile Metal Shell	Each	1	
Porous Granular Embankment (Special)	Cu Yd.	61	

- For details of Bar Splices See Sheet 16 of 19
- For Wingwall Details and Section thru Abutment see Sheet 12 of 19.
- Hatched area to be poured after Superstructure falsework has been removed. Quantity of concrete included with Concrete Superstructure.
- Space reinforcement in cap to miss anchor bolts.
- Pour steps monolithically with cap.
- Quantity of concrete in end post included with Concrete Superstructure on Sheet 6 of 19.
- Bars indicated thus 1X2 - #5 etc. Indicates 1 line of bars with 2 lengths per line.

REVISIONS	DATE

ILLINOIS DEPARTMENT OF TRANSPORTATION
EAST ABUTMENT DETAILS
IL ROUTE 10 OVER CAMP CREEK
FAS RTE. 1513 SECTION SBR-1
STA. 16+69.00
CHAMPAIGN COUNTY STR. 010-0275
 SCALE: N.T.S. DRAWN BY LP
 DATE MAY 2007 CHECKED BY MJS