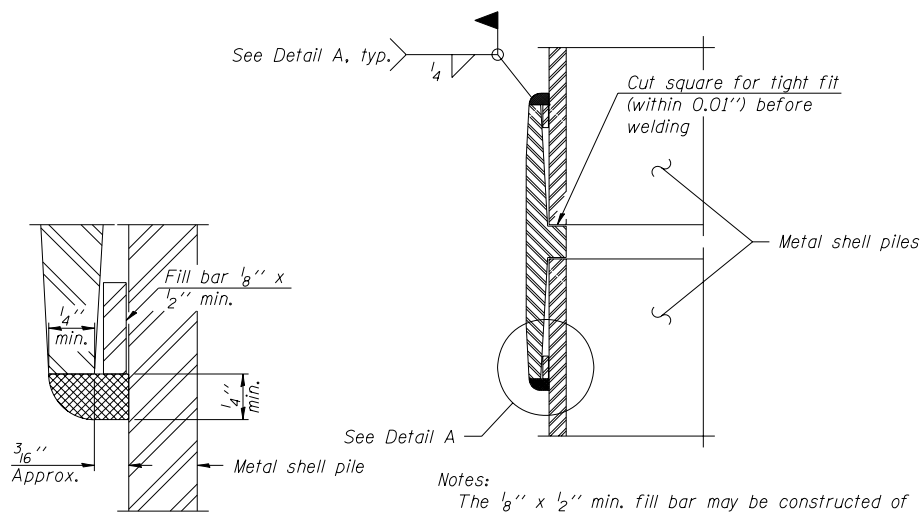


F.A.S. RTE.	SECTION	COUNTY	TOTAL SHEETS	SHEET NO.
1513	5BR-1	CHAMPAIGN	38	28
STA.		TO STA.		
FED. ROAD DIST. NO. 5		ILLINOIS FED. AID PROJECT		



METAL SHELL PILE TABLE

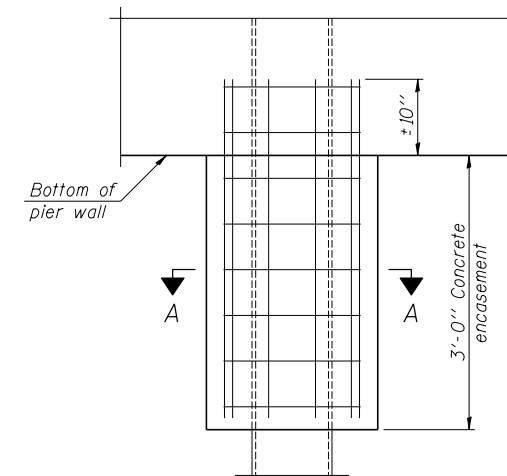
Designation	Wall thickness t	Weight per foot (Lbs./ft.)	Inside volume (yd. ³ /ft.)	Encasement diameter A
PP12	0.179"	22.60	0.0274	30"
PP12	0.250"	31.37	0.0267	30"
PP14	0.250"	36.71	0.0368	30"
PP14	0.312"	45.61	0.0361	30"



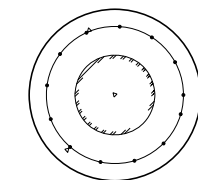
DETAIL A

Notes:
 The 1/8" x 1/2" min. fill bar may be constructed of 2 bars with a 1/8" max. gap between them.
 Pile segments shall be driven to solid contact with splicer before welding.

WELDED COMMERCIAL SPLICE



ELEVATION

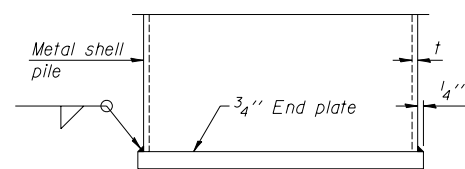


Metal shell pile

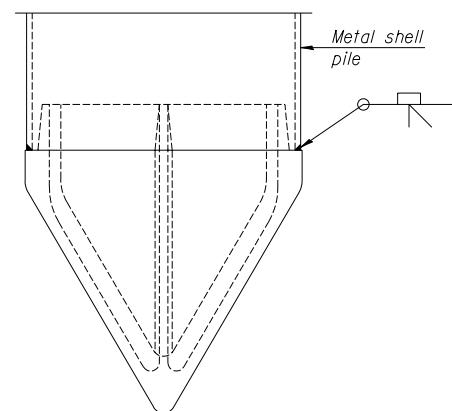
SECTION A-A

Notes:
 See Metal Shell Pile Table for dimension "A".
 Forms for encasement may be omitted when soil conditions permit.

CONCRETE ENCASEMENT AT PIERS

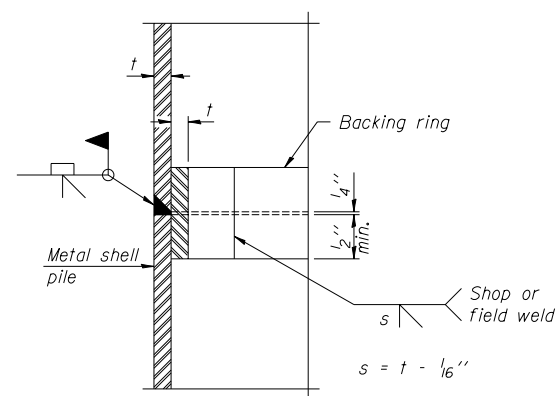


END PLATE ATTACHMENT



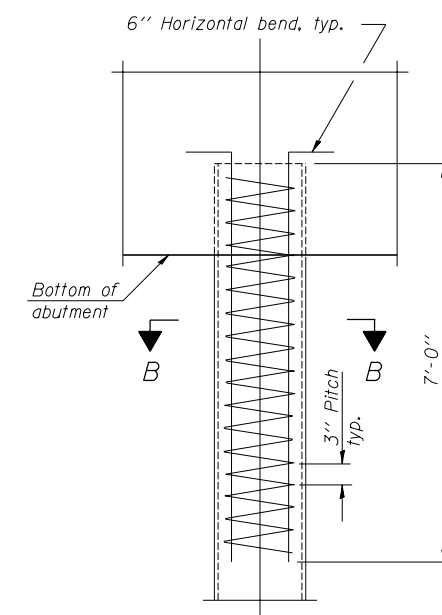
METAL SHELL PILE SHOE ATTACHMENT

At locations specified in the plans, the Contractor shall furnish metal shell pile shoes satisfying Art. 1006.05(e) of the standard specifications except that the cone angle shall be between 55 and 65 degrees from the horizontal and utilize an inside flange to allow a circumferential weld as shown above.

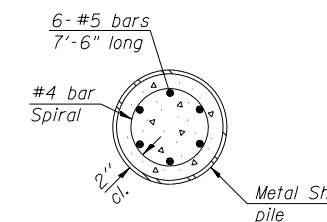


COMPLETE PENETRATION WELD SPLICE

Backing ring made from pile shell. Remove segment to allow reducing circumference and vertically rejoin with partial joint penetration weld.



ELEVATION



SECTION B-B

METAL SHELL REINFORCEMENT AT ABUTMENTS

Note:
 The metal shell piles shall be according to ASTM A 252 Grade 3.

REVISIONS	
NAME	DATE

ILLINOIS DEPARTMENT OF TRANSPORTATION
CONCRETE PILES
 IL ROUTE 10 OVER CAMP CREEK
 FAS ROUTE 1513 SECTION 5BR-1
 STA. 16+69.00
 CHAMPAIGN COUNTY STR. 010-0275
 SCALE: N.T.S. DRAWN BY LP
 DATE MAY 2007 CHECKED BY MJS