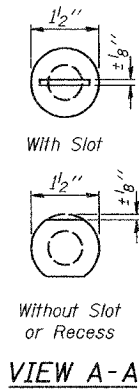
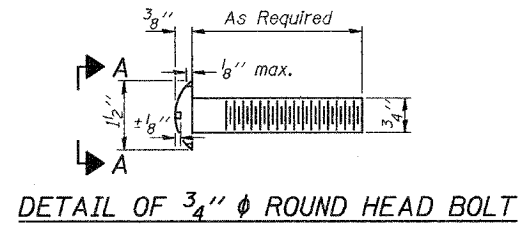
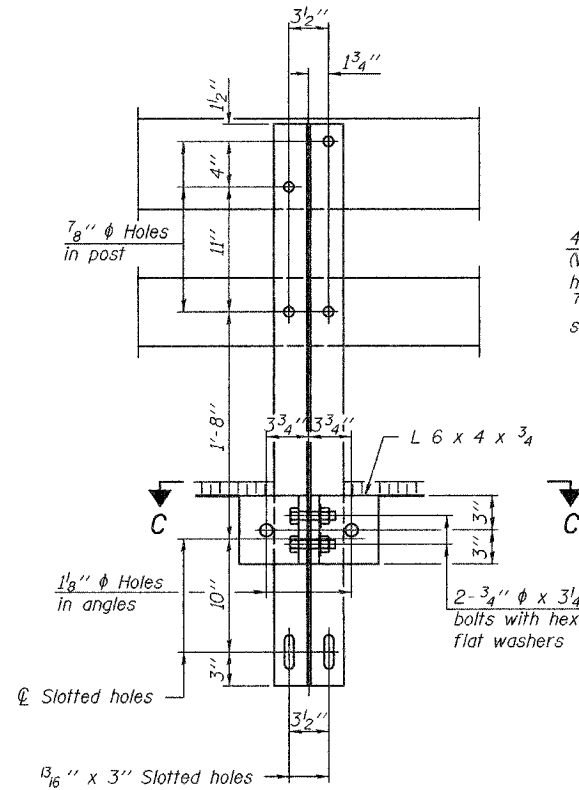


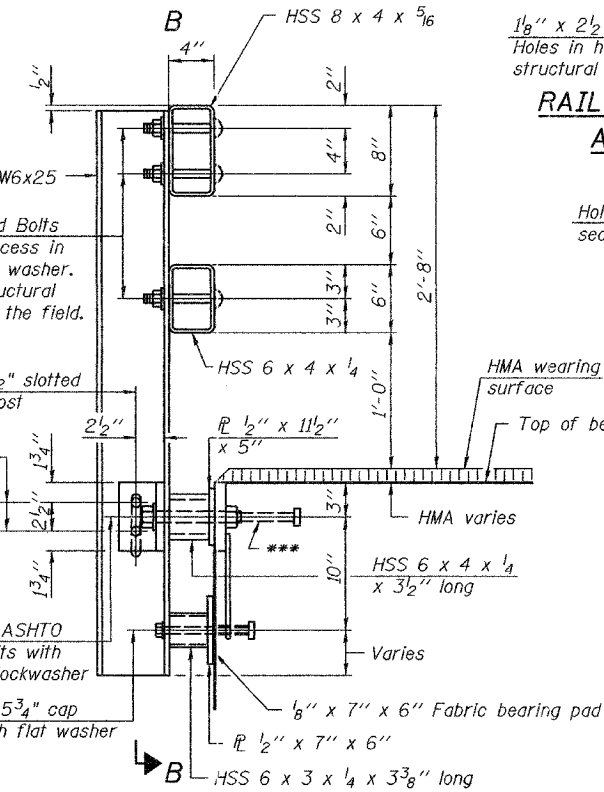
FOR RAIL POST SPACING SEE SH.#4 OF 5



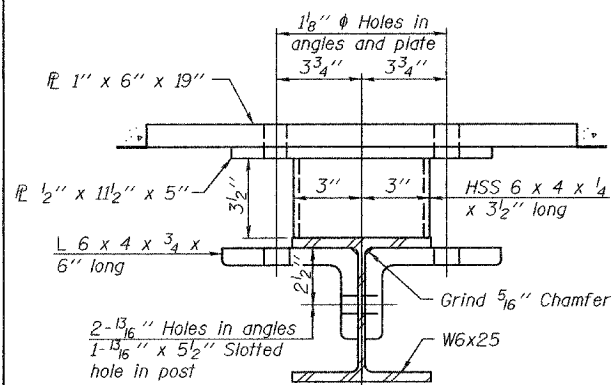
4-3/4"  $\phi$  x 6" Round Head Bolts (With slot or approved recess in head) with locknut & flat washer. 7/8"  $\phi$  holes in hollow structural section may be drilled in the field.



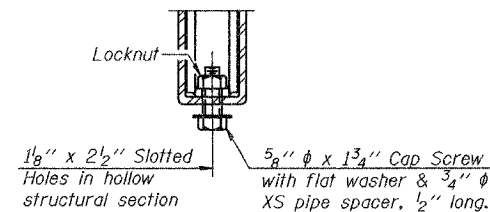
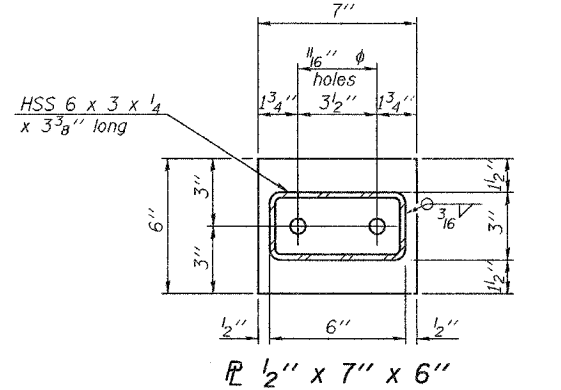
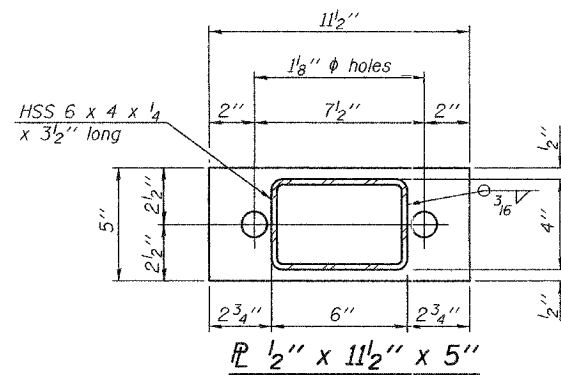
SECTION B-B



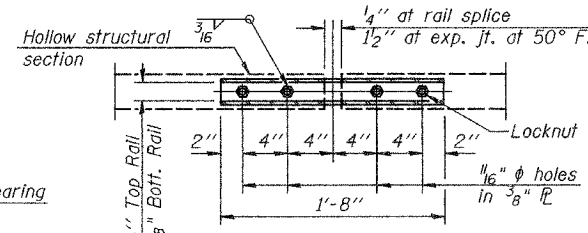
SECTION AT RAIL POST



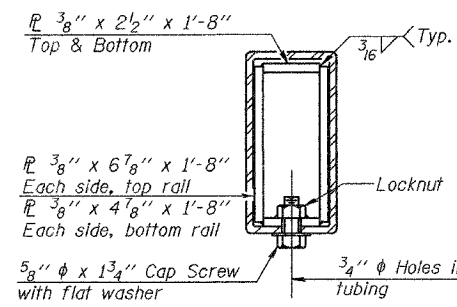
SECTION C-C



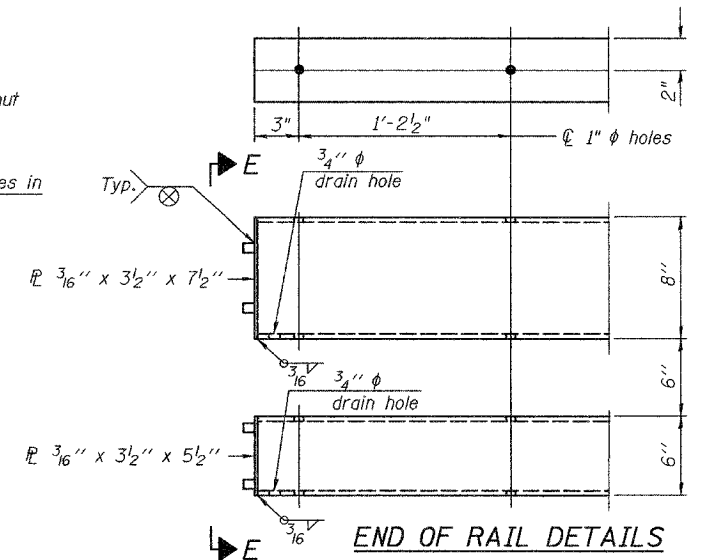
RAIL SPLICE CONNECTION AT EXPANSION JT.



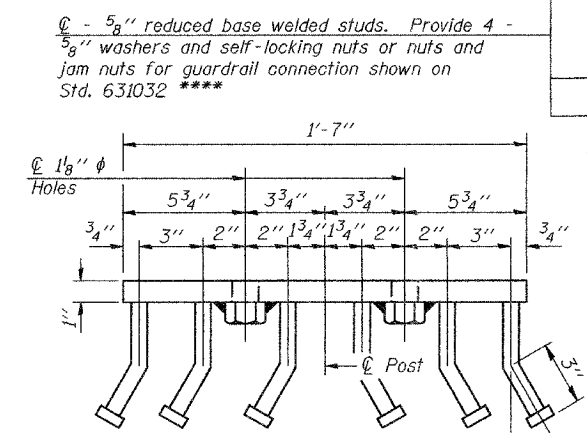
PLAN-BOTT. SPLICE R TYPICAL



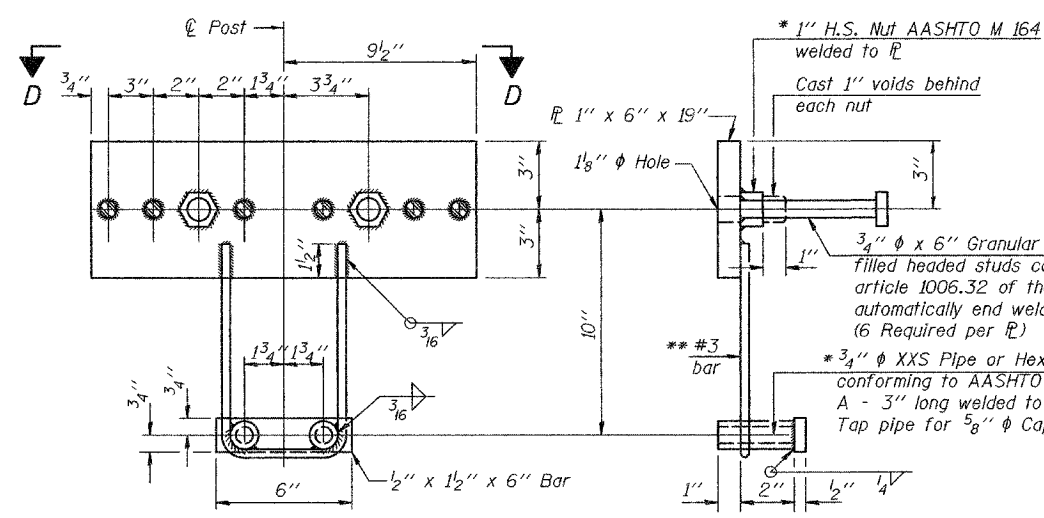
SECTION AT RAIL SPLICE



END OF RAIL DETAILS



VIEW D-D



ANCHOR DEVICE

\* Threaded areas shall be plugged or blocked off during casting of beam. Galvanized after fabrication.

\* 1" H.S. Nut AASHTO M 164 welded to R  
Cast 1" voids behind each nut  
3/4"  $\phi$  x 6" Granular or solid flux filled headed studs conforming to article 1006.32 of the Std. Specs. automatically end welded. (6 Required per R)  
\* 3/4"  $\phi$  XXS Pipe or Hex Coupler Nuts conforming to AASHTO M291, Grade A - 3" long welded to #3 bar and Tap pipe for 5/8"  $\phi$  Cap Screw.

\*\* Whenever the lower insert assemblies interfere with strand locations, the #3 bars shall be cut and adjusted in order to allow raising or lowering of the lower inserts. Maximum adjustment not to exceed 1/2".

NOTES

All field drilled holes shall be coated with an approved zinc rich paint before erection.  
For multi-span bridges, sufficient 1/4" x 6" x 1'-2" galvanized steel shims shall be provided to align rail between adjacent spans. Cost included with Steel Railing, Type SM.  
All steel rail members shall be galvanized according to Article 509.05 of the Standard Specifications.  
\*\*\* The studs of the anchor devices shall be placed below the top reinforcement bars and the outermost longitudinal reinforcement bar shall be placed directly above the studs of the rail post anchor device.  
\*\*\*\* The existing end shoes will require modification or replacement with Type 6A "Connection Plate Assembly" as per Standard 631032 for connection to the steel bridge rail. Cost of such adjustment or modification shall be included in the cost of Remove and Re-Erect Traffic Barrier Terminal, Type 6.

BILL OF MATERIAL

Item	Unit	Quantity
Steel Railing, Type SM	FOOT	203

TYPE SM STEEL RAILING  
COUNTY HIGHWAY 19 OVER  
LITTLE INDIAN CREEK  
SECTION 07-00097-00-BR  
MORGAN COUNTY  
STATION 113+79.00