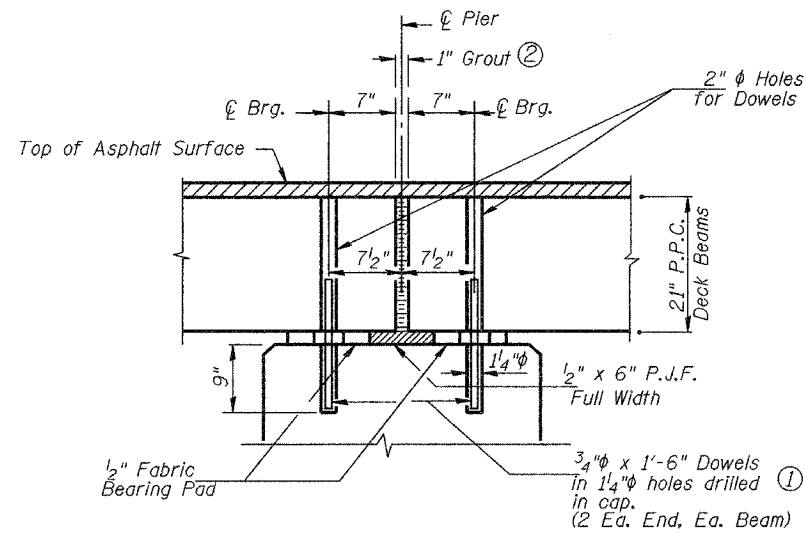
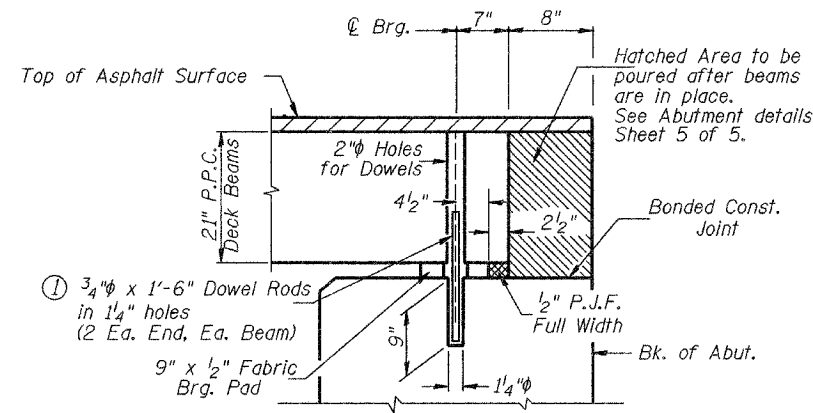


RAIL POST SPACING

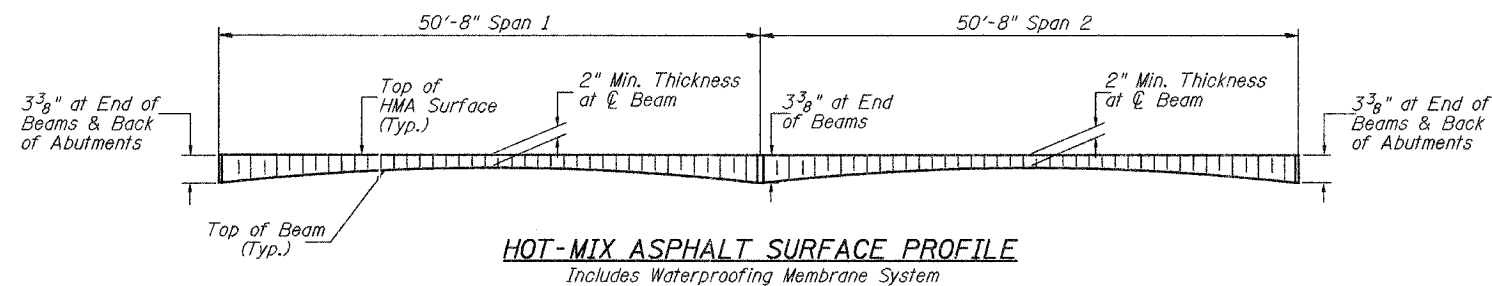


SECTION THRU PIER
(At Right Angles)



SECTION THRU ABUTMENTS
(At Right Angles)

- ① Existing Dowel Rods shall be burned off flush with the top of existing concrete, ground smooth, and sealed with epoxy. Cost to be included in the cost of Removal of Existing Superstructures. After beams have been erected, holes shall be drilled into substructure and anchor dowels placed. Dowel holes shall be filled with non-shrink grout to top of beam and allowed to cure min. 24 hrs. prior to grouting the shear keys.
- ② 1" Joint shall be packed with a very dry mix of 2:1 sand and P.C. mortar. 1" Dimension may vary plus or minus to accommodate tolerance in beam lengths.



HOT-MIX ASPHALT SURFACE PROFILE
Includes Waterproofing Membrane System

**SUPERSTRUCTURE DETAILS,
HMA SURFACE PROFILE,
AND RAIL POST SPACING
COUNTY HIGHWAY 19 OVER
LITTLE INDIAN CREEK
SECTION 07-00097-00-BR
MORGAN COUNTY
STATION 113+79.00**