

ROUTE No.	SECTION	COUNTY	TOTAL SHEETS	SHEET NO.
F.A.P. 827	12Z-3, 12BR	WABASH, IL GIBSON, IN	158	51
STA.		TO STA.		
F.H.W.A. REGION		ILLINOIS	PROJECT	
BRIDGE SHEET S35 OF S114				CONTRACT 94450

BILL OF MATERIAL
(West Approach Deck)

Bar	No.	Size	Length	Shape
a(E)	174	#5	26'-5"	—
a5(E)	86	#6	6'-0"	—
a6(E)	61	#5	30'-3"	—
a7(E)	61	#5	22'-9"	—
b1(E)	112	#5	42'-6"	—
d3(E)	96	#5	7'-0"	└┘
x(E)	83	#6	4'-8"	└┘
Pay Item	Unit	Total		
Concrete Superstructure	Cu. Yd.	59.3		
Reinf. Bars, Epoxy Coated	Pound	15,190		
Bridge Deck Grooving	Sq. Yd.	220		
Protective Coat	Sq. Yd.	230		

BILL OF MATERIAL
(West Approach Parapets)

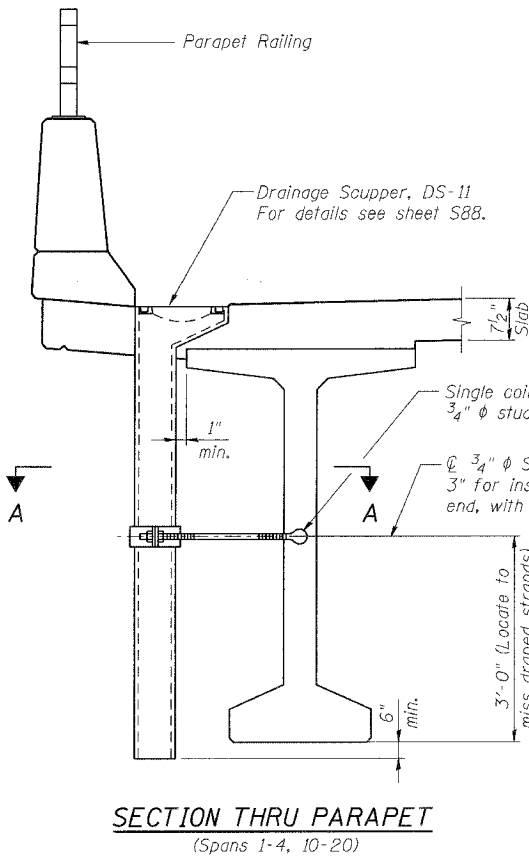
Bar	No.	Size	Length	Shape
d(E)	96	#5	5'-7"	└┘
e(E)	42	#4	14'-0"	—
e1(E)	2	#8	42'-6"	—
e2(E)	2	#4	42'-6"	—
Pay Item	Unit	Total		
Concrete Superstructure	Cu. Yd.	9.6		
Reinf. Bars, Epoxy Coated	Pound	1,240		
Protective Coat	Sq. Yd.	36		

BILL OF MATERIAL
(Unit 1 Deck)

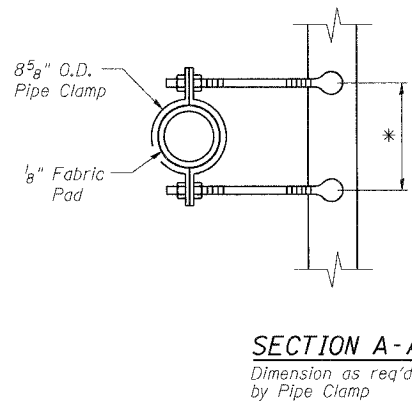
Bar	No.	Size	Length	Shape
a(E)	1908	#5	26'-5"	—
a1(E)	635	#5	22'-1"	—
a2(E)	952	#6	6'-6"	—
a3(E)	635	#5	30'-9"	—
a8(E)	48	#5	2'-0"	—
b(E)	918	#5	30'-6"	—
b1(E)	828	#5	29'-0"	—
b2(E)	300	#7	40'-0"	—
b3(E)	200	#7	23'-9"	—
b4(E)	100	#7	17'-9"	—
d1(E)	1068	#5	8'-0"	└┘
x(E)	150	#6	4'-8"	└┘
Pay Item	Unit	Total		
Concrete Superstructure	Cu. Yd.	662.1		
Reinf. Bars, Epoxy Coated	Pound	199,040		
Bridge Deck Grooving	Sq. Yd.	2454		
Protective Coat	Sq. Yd.	2560		
Drainage Scupper, DS-11	Each	6		

BILL OF MATERIAL
(Unit 1 Parapets)

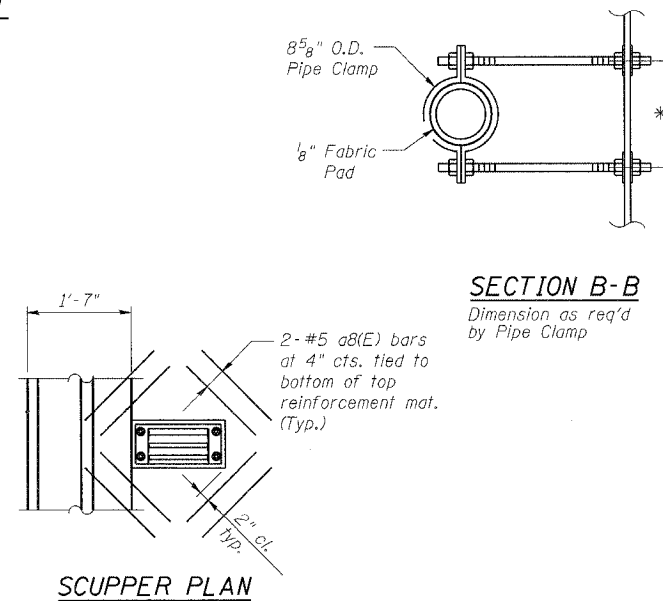
Bar	No.	Size	Length	Shape
d(E)	1068	#5	5'-7"	└┘
e3(E)	12	#8	37'-10"	—
e4(E)	16	#4	27'-9"	—
e5(E)	12	#8	14'-8"	—
e6(E)	12	#4	14'-8"	—
e7(E)	8	#8	47'-3"	—
e8(E)	12	#4	31'-6"	—
e9(E)	14	#4	14'-0"	—
e10(E)	280	#4	17'-8"	—
e11(E)	84	#4	14'-8"	—
e13(E)	14	#4	14'-5"	—
Pay Item	Unit	Total		
Concrete Superstructure	Cu. Yd.	106.7		
Reinf. Bars, Epoxy Coated	Pound	13,980		
Protective Coat	Sq. Yd.	402		



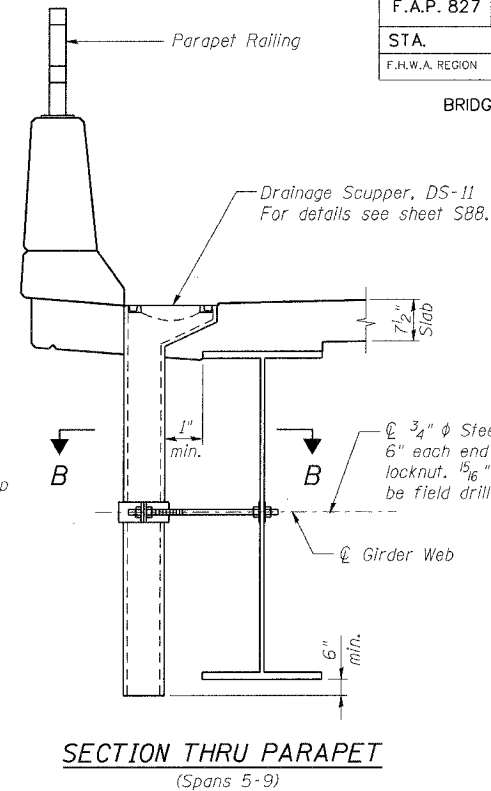
SECTION THRU PARAPET
(Spans 1-4, 10-20)



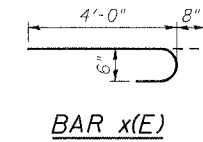
SECTION A-A
Dimension as req'd by Pipe Clamp



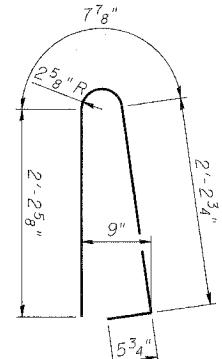
SCUPPER PLAN



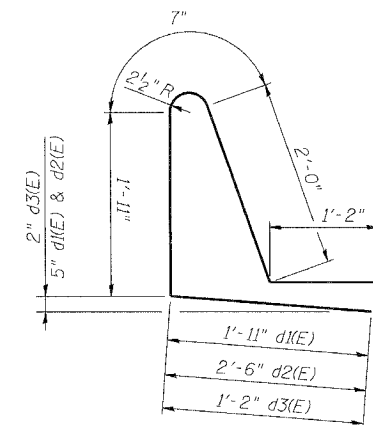
SECTION THRU PARAPET
(Spans 5-9)



BAR x(E)



BAR d(E)



BARS d1(E), d2(E) & d3(E)

NOTES:

1. Reinforcement bars designated (E) shall be epoxy coated.
2. Cut longitudinal reinforcement to clear drainage scuppers.
3. All bar dimensions are out to out.
4. The Scupper clamping device and inserts shall be galvanized according to AASHTO M 232.
5. Cost of Pipe Clamp included with "Drainage Scupper, DS-11".

benesch

alfred benesch & company
Engineers • Surveyors • Planners
205 North Michigan Avenue, Suite 2400
Chicago, Illinois 60601
312-665-0425
Joe No. 3426

ILLINOIS DEPARTMENT OF TRANSPORTATION
IL ROUTE 15/IN ROUTE 64
OVER WABASH RIVER PUBLIC WATERS
FAP 827 SECT 12Z-3, 12BR

**DECK DETAILS AND
BILL OF MATERIAL**

SN: 093-0021 (IL)/9502700 (IN)
WABASH CO., IL.

STA. 1036-27
DATE: JUNE 15, 2007

m:\proj\3426\stage_2\structures\design\super\skd1001.dgn

6/26/2007 1:00:11 PM

DESIGNED	WJZ
CHECKED	ADD/KWS
DRAWN	WJZ
CHECKED	ADD/KWS