

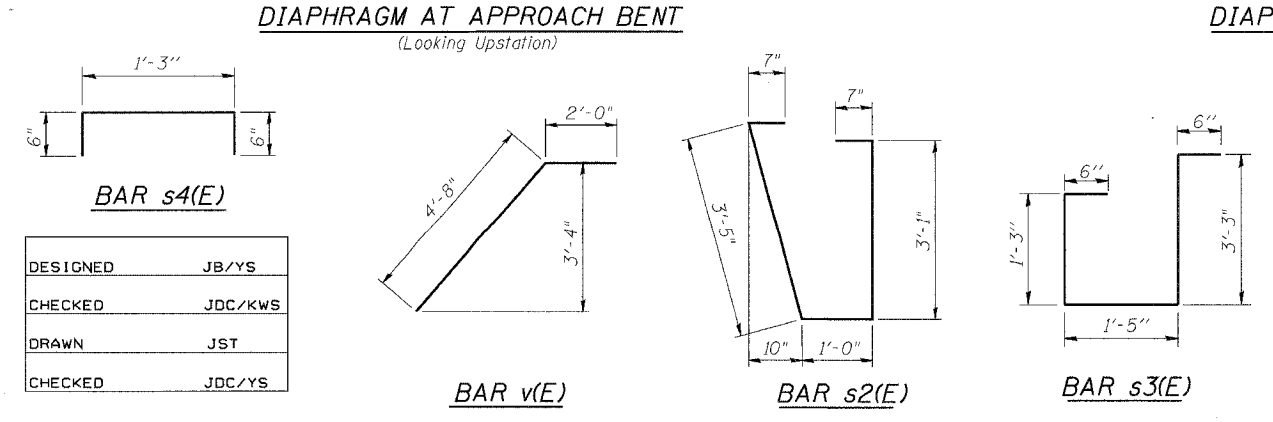
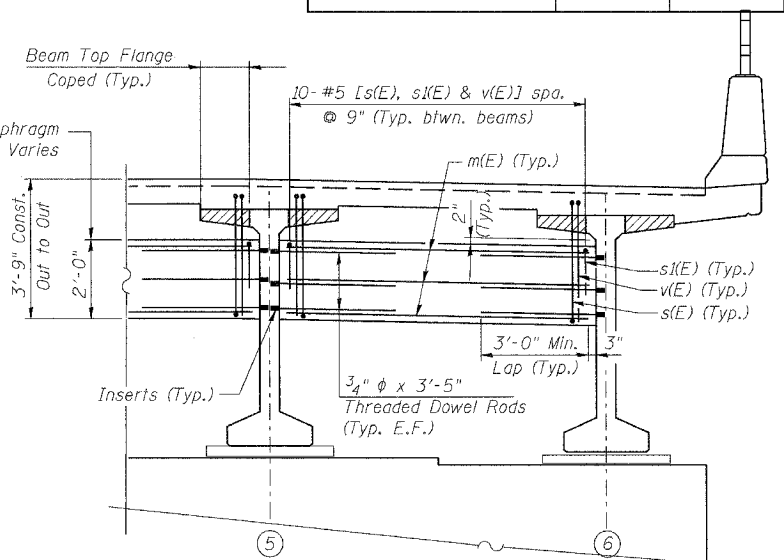
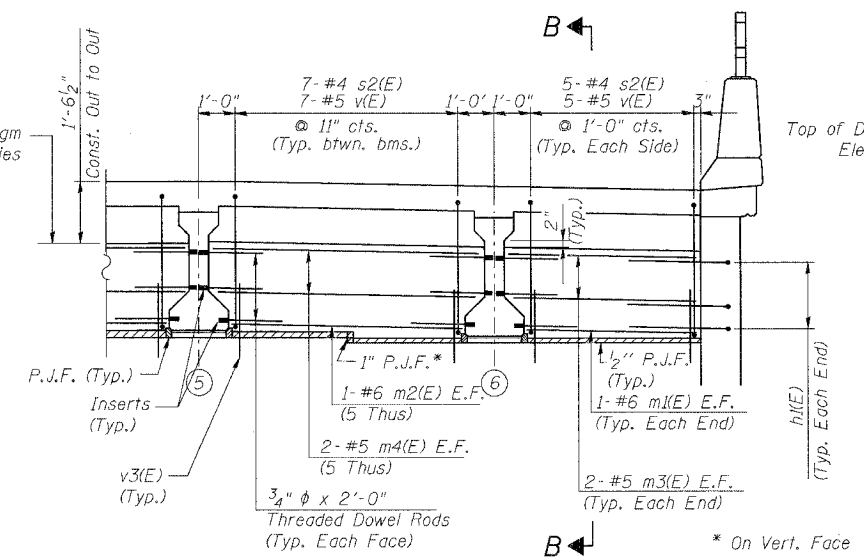
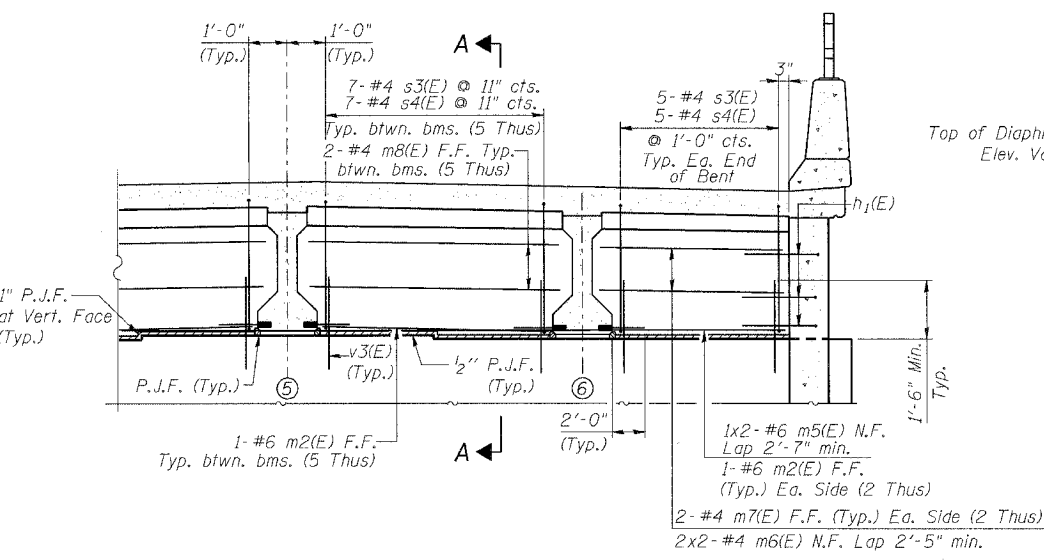
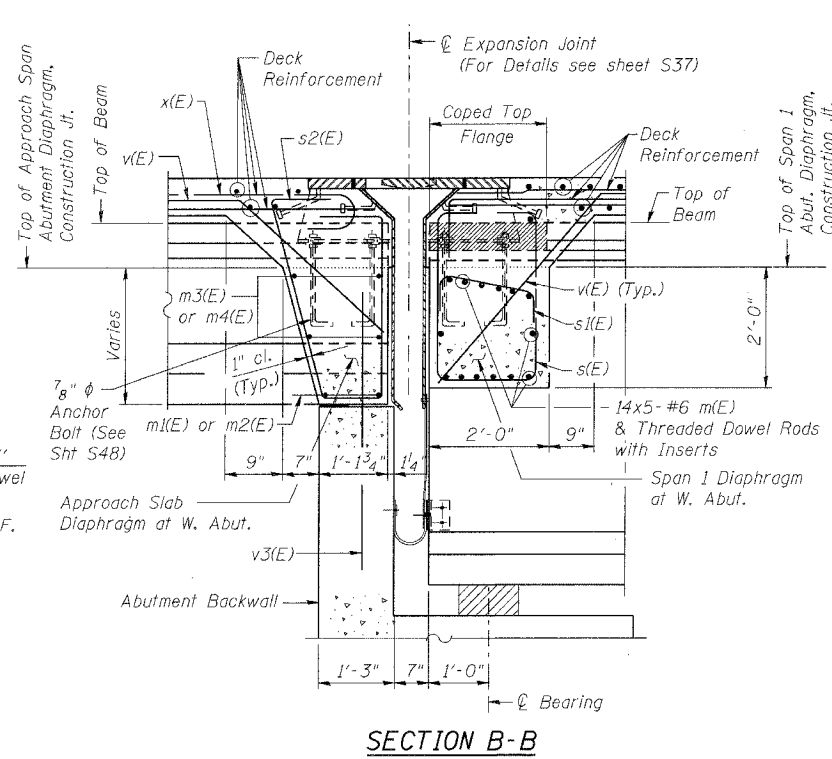
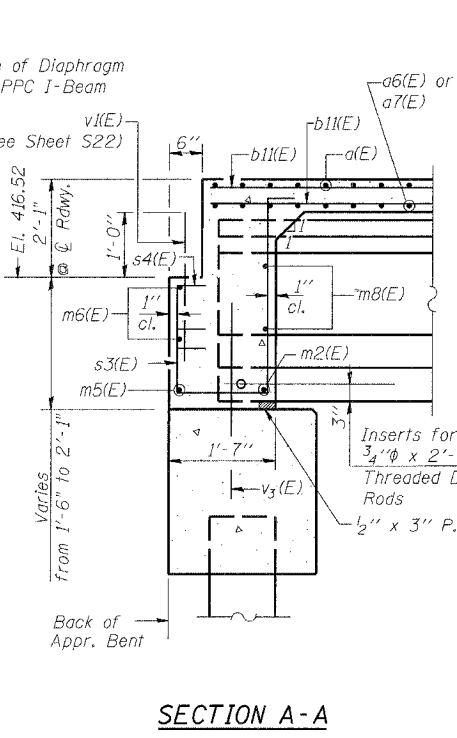
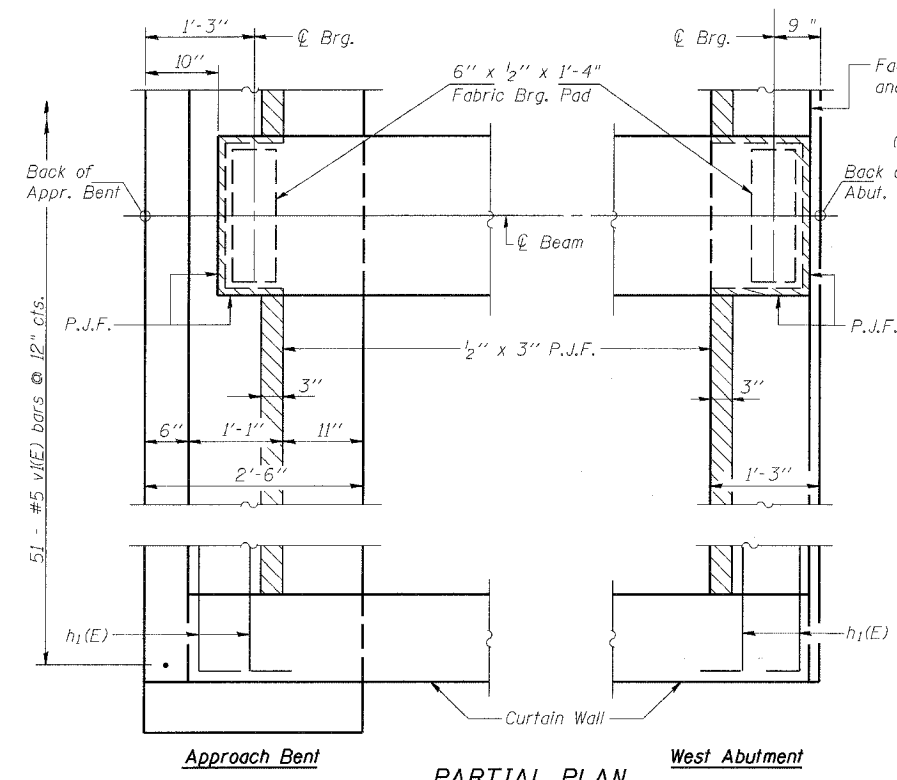
ROUTE No.	SECTION	COUNTY	TOTAL SHEETS	SHEET NO.
F.A.P. 827	12Z-3, 12BR	WABASH, IL GIBSON, IN	158	62
STA.		TO STA.		
F.H.W.A. REGION		ILLINOIS	PROJECT	

BRIDGE SHEET S46 OF S114 CONTRACT 94450

BILL OF MATERIAL

(For 2 Lines of 7 Approach Span Diaphragms per Line)

Bar	No.	Size	Length	Shape
m1(E)	6	#6	4'-2"	—
m2(E)	15	#6	5'-8"	—
m3(E)	8	#5	4'-8"	—
m4(E)	20	#5	6'-8"	—
m5(E)	2	#6	25'-2"	—
m6(E)	4	#4	25'-2"	—
m7(E)	4	#4	4'-8"	—
m8(E)	10	#4	6'-8"	—
s2(E)	45	#4	8'-8"	∩
s3(E)	45	#4	6'-11"	∩
s4(E)	45	#4	2'-3"	∩
v(E)	45	#5	6'-8"	∩
v1(E)	51	#5	2'-0"	—
Pay Item		Unit	Total	
Concrete Superstructure		Cu. Yd.	30.2	
Reinf. Bars, Epoxy Coated		Pound	1,500	



- NOTES:**
- Reinforcement bars designated (E) shall be epoxy coated.
 - See Sheet S69 and S70 for h1(E) and v3(E) bars.
 - For West Abutment Approach span Details see sheet S22. For Bill of Material, See Sheet S35.
 - Bars indicated thus: 1x2-#6 etc., indicates 1 line of bars with 2 lengths per line.
 - For Bill of Material and Bar Bend for Span 1 Diaphragm at W. Abut., see sheet S48.
 - N.F. denotes Near Face, F.F. denotes Far Face, E.F. denotes Each Face
 - Cost of threaded dowel rods included with PPC beams.
 - Cost of Fabric Bearing Pads included with Concrete Superstructure.

benesch
 alfred benesch & company
 Engineers - Surveyors - Planners
 205 North Michigan Avenue, Suite 2400
 Chicago, Illinois 60601
 312-566-0460
 Job No. 3426

ILLINOIS DEPARTMENT OF TRANSPORTATION
 IL ROUTE 15/IN ROUTE 64
 OVER WABASH RIVER PUBLIC WATERS
 FAP 827 SECT 12Z-3, 12BR
**DIAPHRAGM DETAILS
 WEST APPROACH SPAN
 AND WEST ABUTMENT**
 SN: 093-0021 (IL)/9502700 (IN) STA. 1036+27
 WABASH CO., IL. DATE: JUNE 15, 2007

m:\proj\3426\stage_2\structures\design\super\sdiat001.dgn 6/26/2007 10:38 PM