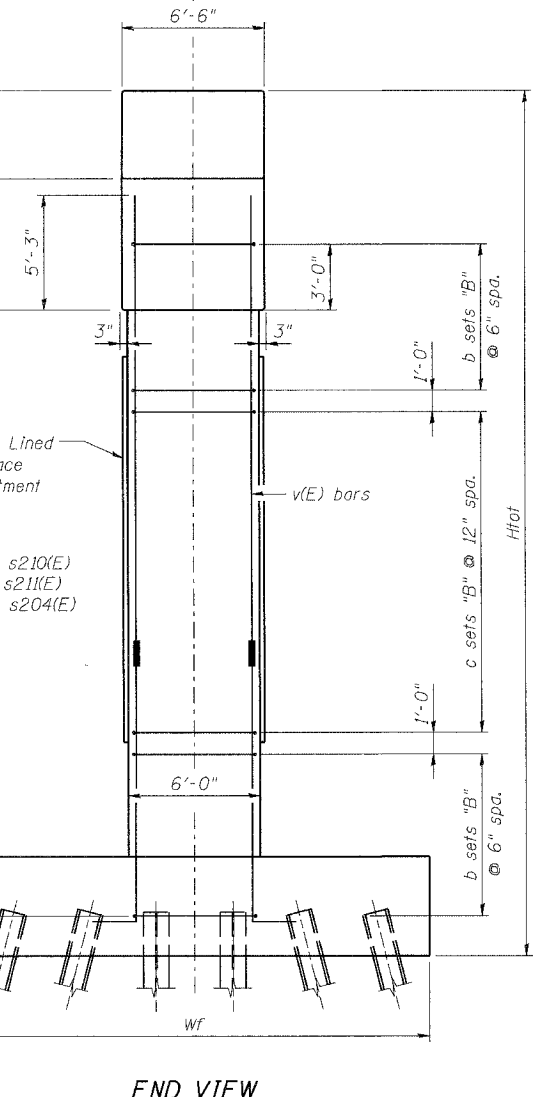
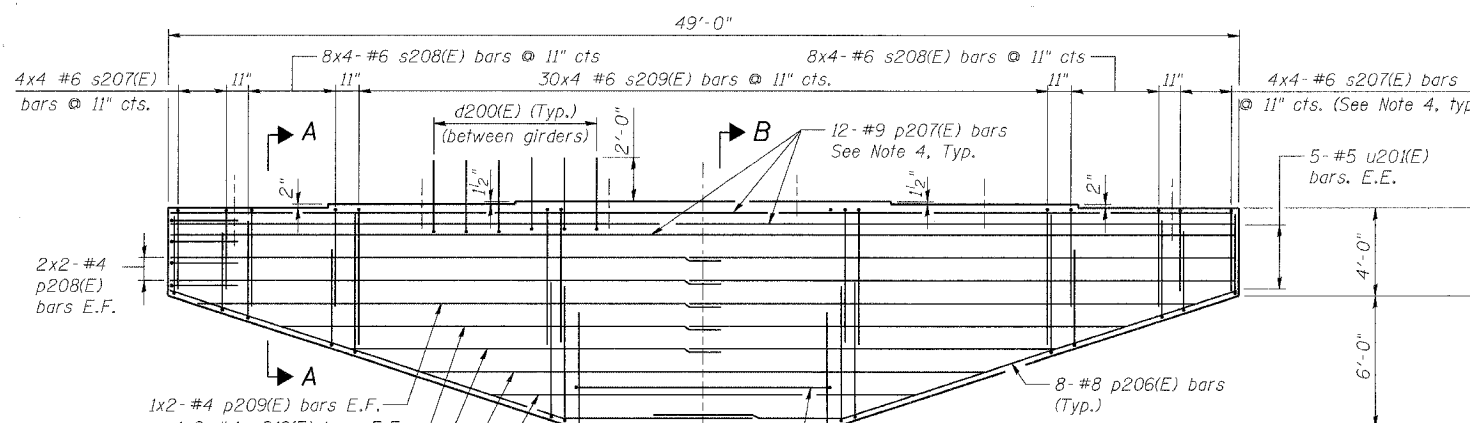
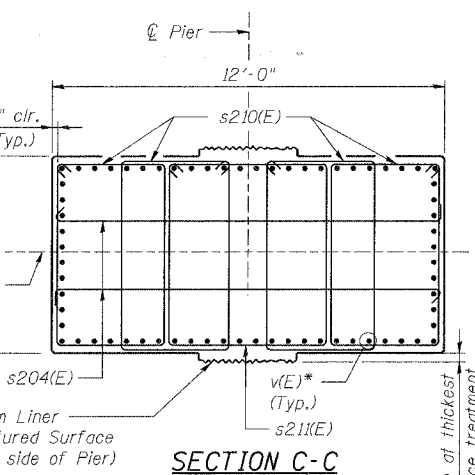
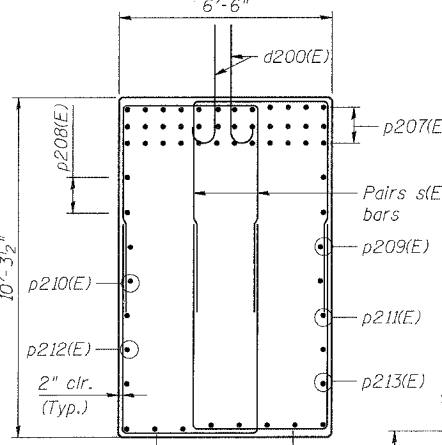
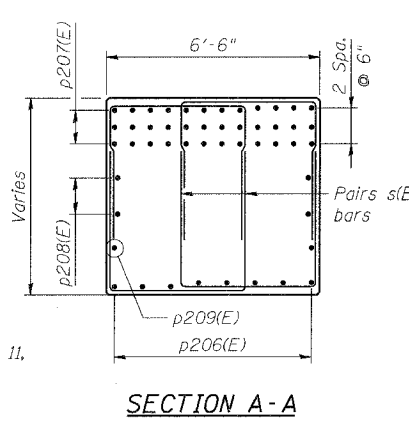
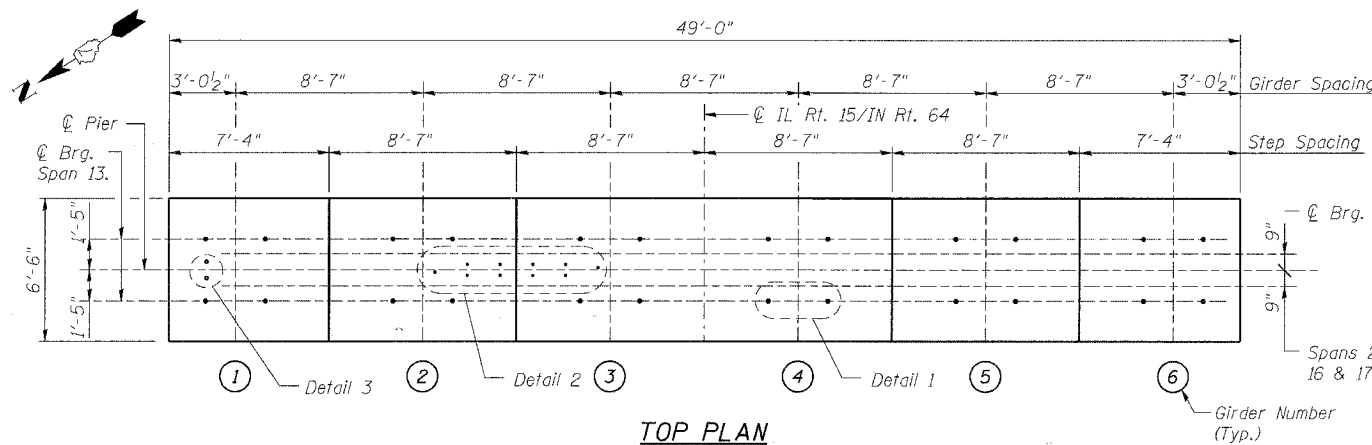
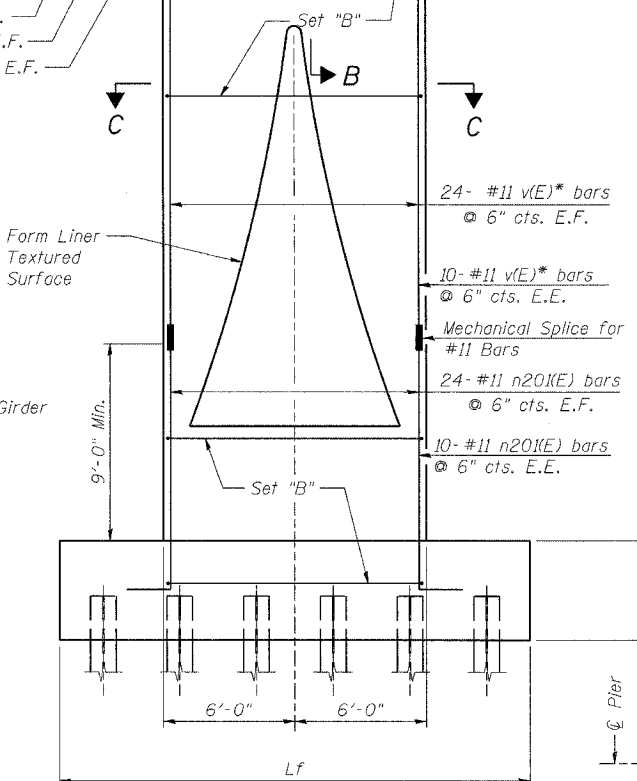
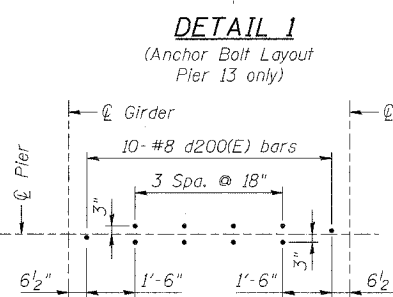
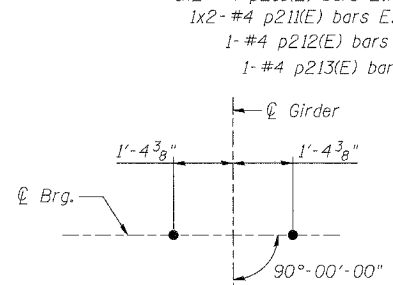


ROUTE No.	SECTION	COUNTY	TOTAL SHEETS	SHEET NO.
F.A.P. 827	12Z-3, 12BR	WABASH, IL GIBSON, IN	158	90
STA.	TO STA.		PROJECT	
F.H.W.A. REGION	ILLINOIS	CONTRACT		
BRIDGE SHEET S74 OF S114			94450	

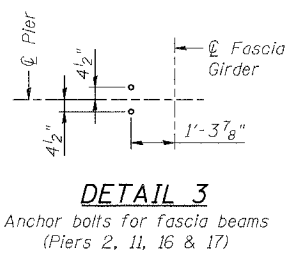


PIER DATA

	Pier 2	Pier 11	Pier 13	Pier 16	Pier 17
Hf	6'-0"	6'-0"	5'-0"	6'-0"	6'-0"
Hc	20'-7 7/8"	25'-4 1/2"	14'-11 7/8"	14'-10 1/2"	16'-3 3/8"
Htot	36'-7 7/8"	41'-4 1/2"	29'-11 7/8"	30'-10 1/2"	32'-3 3/8"
Lf	21'-6"	21'-6"	21'-6"	21'-6"	21'-6"
Wf	21'-6"	21'-6"	14'-6"	21'-6"	21'-6"
Y	378.1	372.5	382.0	380.0	378.0
b	19	19	19	19	19
c	8	12	2	2	3



Pier	Bar
2	v204(E)
11	v205(E)
13	v202(E)
16	v202(E)
17	v203(E)



NOTES:

- Use the following minimum lap lengths except as noted:  
#6: 2'-7" #8: 4'-6" #11: 9'-0".
- E.F. denotes Each Face.  
E.E. denotes Each End.
- Pour steps monolithically with cap.
- Space reinforcement in cap to miss anchor bolts.
- All edges shall have standard 3/4" chamfers except as noted.
- Not used.
- For Footing details see sheets S76-S79.
- For Beam Seat Elevations and reinforcement bar bending details see sheet S80.
- For Bill of Materials see sheets S81-S85.
- For Form Liner details see sheet S80.

ILLINOIS DEPARTMENT OF TRANSPORTATION  
IL ROUTE 15/IN ROUTE 64  
OVER WABASH RIVER PUBLIC WATERS  
FAP 827 SECT 12Z-3, 12BR  
**PIERS 2, 11, 13, 16, & 17**  
**PIER DETAILS**

**benesch**  
alfred benesch & company  
Engineers • Surveyors • Planners  
205 North Michigan Avenue, Suite 2400  
Chicago, Illinois 60601  
312.565.0450  
Job No. 3425

SN: 093-0021 (IL)/9502700 (IN) STA. 1036+27  
WABASH CO., IL. DATE: JUNE 15, 2007

m:\proj\3426\stage\_2\structures\design\sub\spid\002.dgn 6/26/2007 1:01:37 PM

DESIGNED	CDF
CHECKED	YS/HMA
DRAWN	RMG
CHECKED	CDF