

ROUTE No.	SECTION	COUNTY	TOTAL SHEETS	SHEET NO.
F.A.P. 827	12Z-3, 12BR	WABASH, IL GIBSON, IN	158	117
STA.		TO STA.		
F.H.W.A. REGION		ILLINOIS	PROJECT	

BRIDGE SHEET S101 OF S114 CONTRACT 94450

Rock Core Log

Sheet 1 of 1
Date 9/1/2007



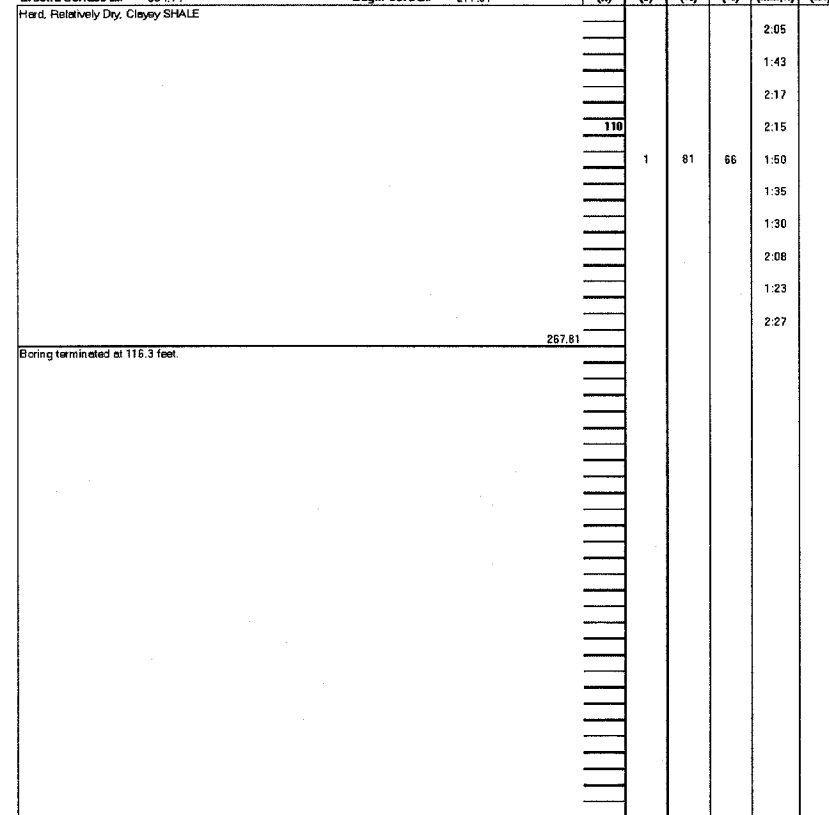
PROJECT FAP 827
ROUTE IL R. 15/N.R. 64
SECTION 12BR, 12Z-3
COUNTY Wabash - IL / Gibson - IN
STRUCTURE NO. Exist. 093-0014 Prop. 093-0021

DESCRIPTION Wabash River Crossing
LOCATION T1S, R12W, Section 26, SW 1/4
DRILL RIG CME 760 Drill Rig
CORE METHOD AW Rods with Wire Line Core Barrel
CORE BARREL TYPE/SIZE 12' Split Barrel/AC

Drilled By Harris Drilling
Checked By SCS

Boring No.: B-111
Station: 1040+00
Offset: 4' Left
Ground Surface El. 384.14

Core Diameter 1.75"
Top of Rock El. 279.14
Begin Core El. 277.61



Color pictures of the cores
Cores will be stored for examination until: 1/2007

DESIGNED	CDF
CHECKED	ADD
DRAWN	CDF
CHECKED	ADD

ILLINOIS DEPARTMENT OF TRANSPORTATION
IL ROUTE 15/IN ROUTE 64
OVER WABASH RIVER PUBLIC WATERS
FAP 827 SECT 12Z-3, 12BR
SOIL BORING LOGS

benesch

alfred benesch & company
Engineers • Surveyors • Planners
205 North Michigan Avenue, Suite 2400
Chicago, Illinois 60601
312-565-0450
Job No. 9425

SN: 093-0021 (IL)/9502700 (IN)
WABASH CO., IL.

STA. 1036+27
DATE: JUNE 15, 2007

m:\proj\3426\stoge_2\structures\design\sub\ssbd011.dgn

3:27:24 PM

9/19/2007