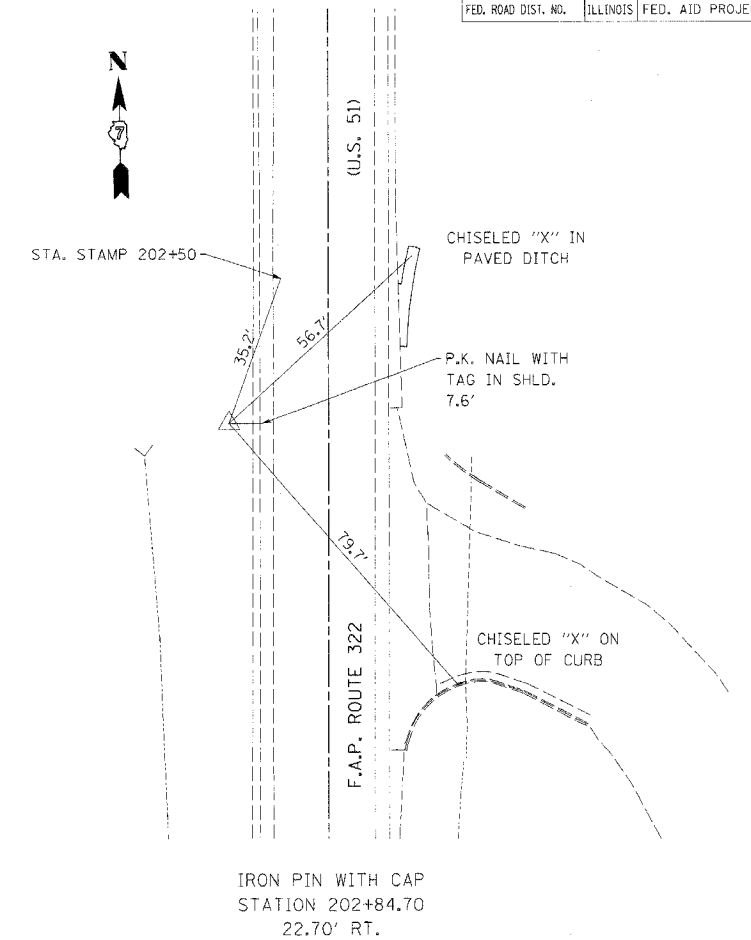
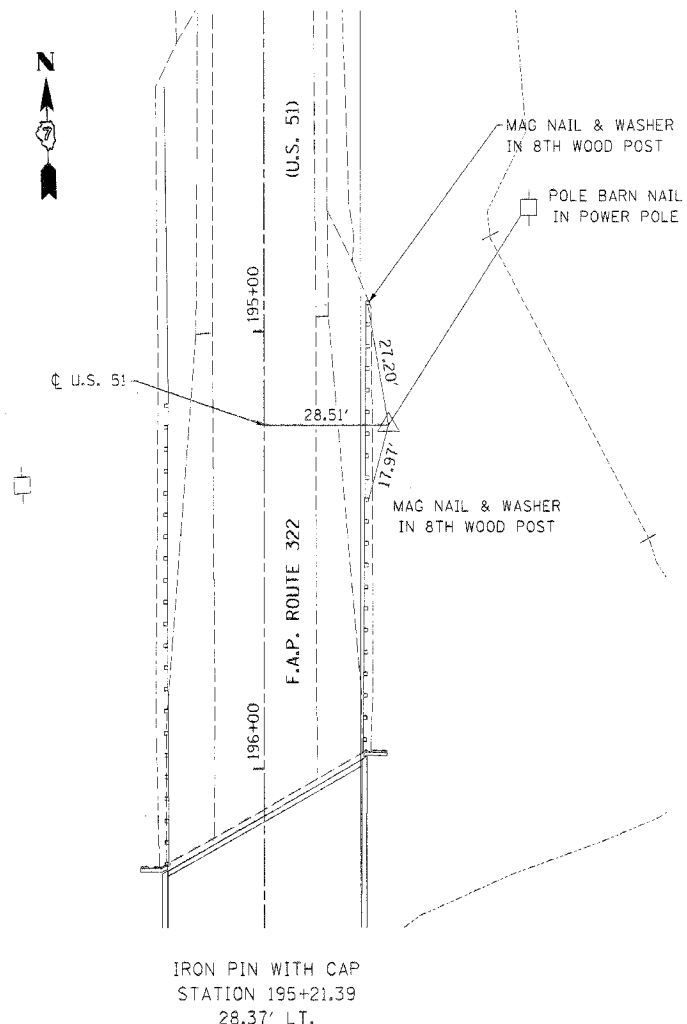
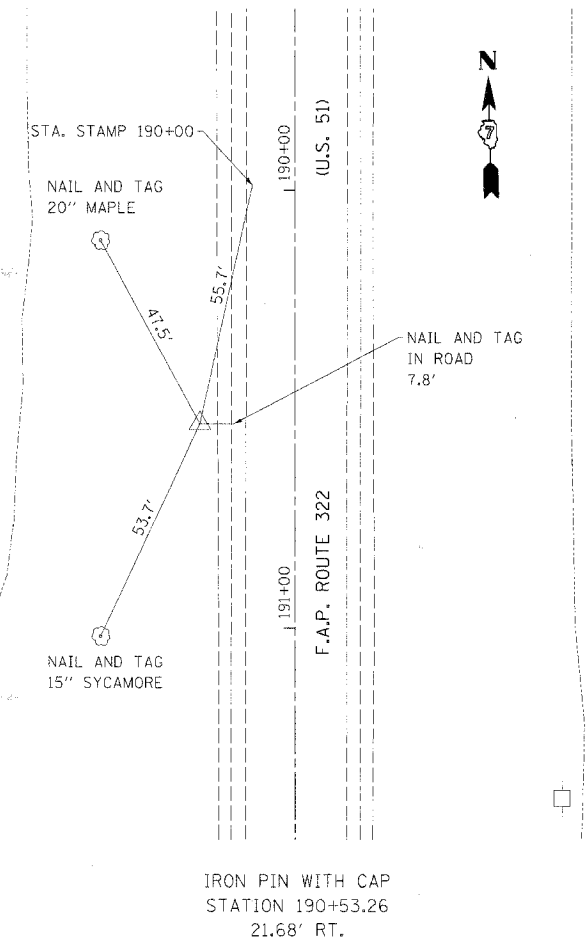


F.A.P. RTE.	SECTION	COUNTY	TOTAL SHEETS	SHEET NO.
322	(23-BR-2)BR	FAYETTE	19	6
STA. 195+73.21		TO STA. 197+80.79		
FED. ROAD DIST. NO.	ILLINOIS	FED. AID PROJECT		



PLOT DATE = 8/24/2007  
 FILE NAME = P:\06a711-2\1001-0\at7-10e-var-0\design\Plans\06-tiepoints.dgn  
 PLOT SCALE = 28.0000' / IN.  
 USER NAME = USERH

REVISIONS	
NAME	DATE

ILLINOIS DEPARTMENT OF TRANSPORTATION  
**TIE POINTS**  
 F.A.P. ROUTE 322 (IL 51)  
 SECTION (23-BR-2)BR  
 FAYETTE COUNTY

SCALE: VERT. NONE  
 HORIZ. NONE  
 DATE 08/23/07

DRAWN BY WJS  
 CHECKED BY AJD