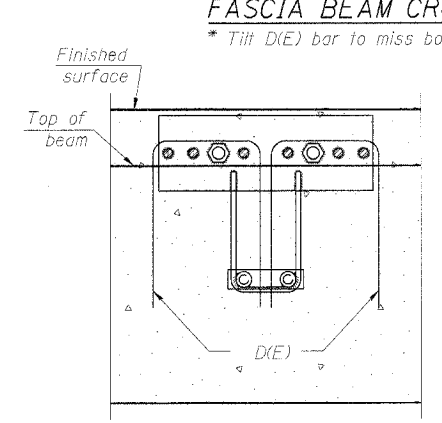
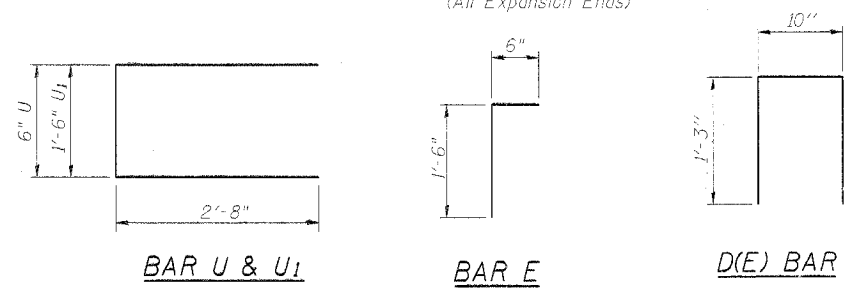
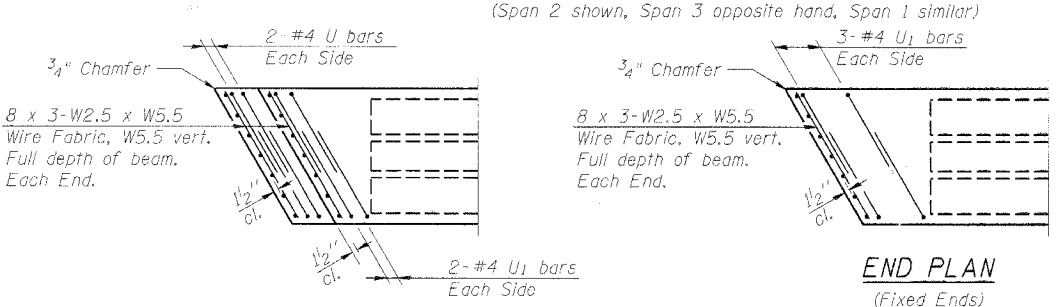
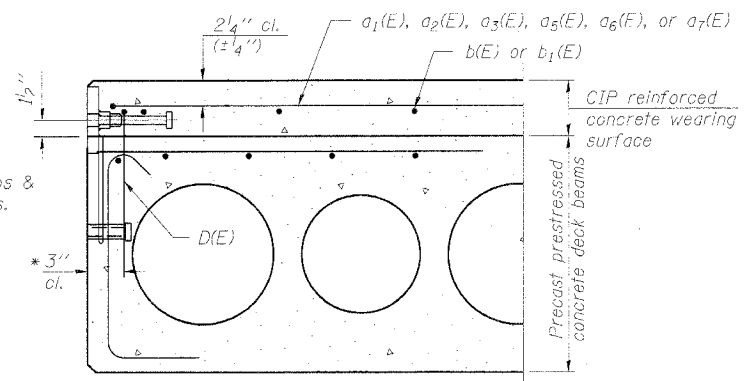
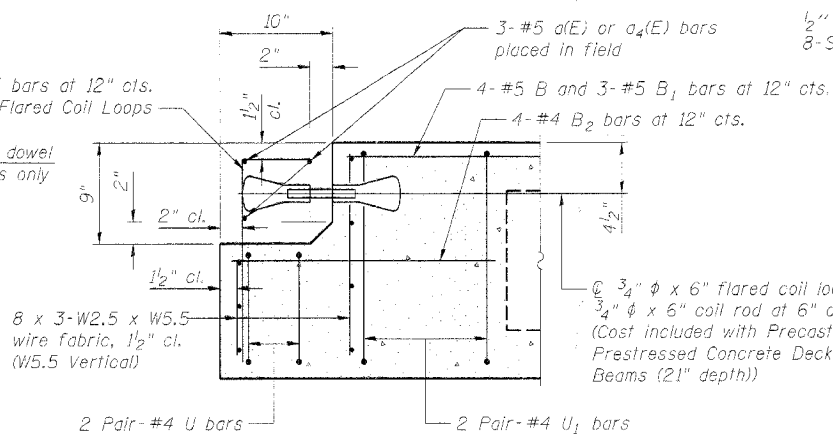
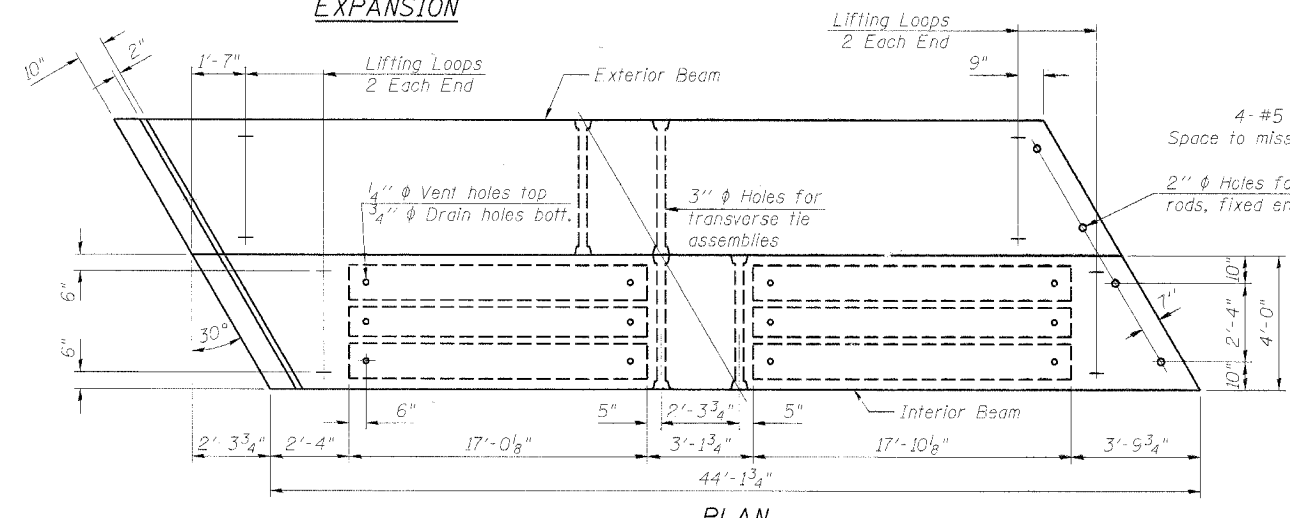
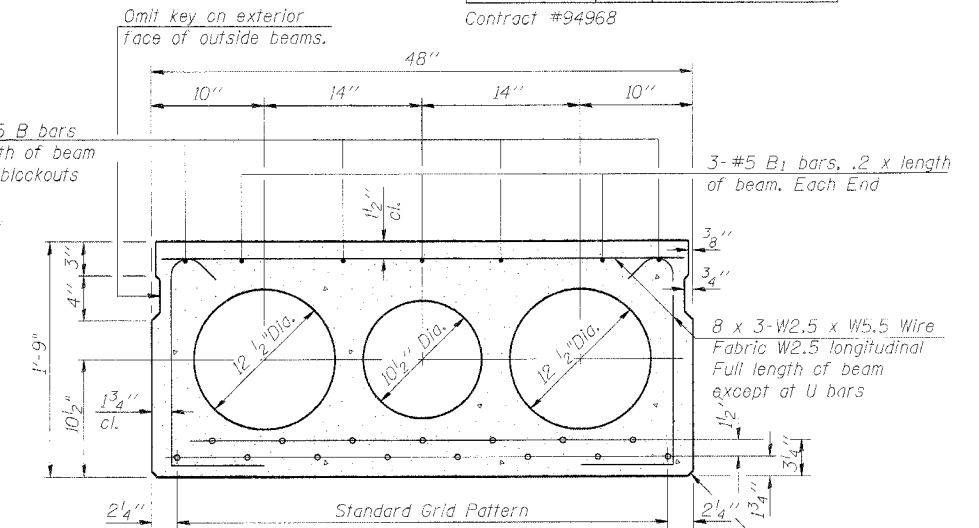
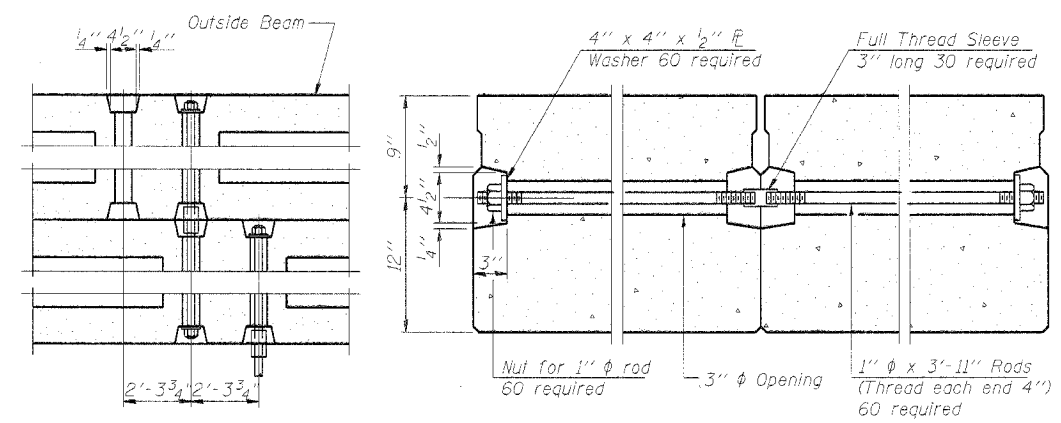
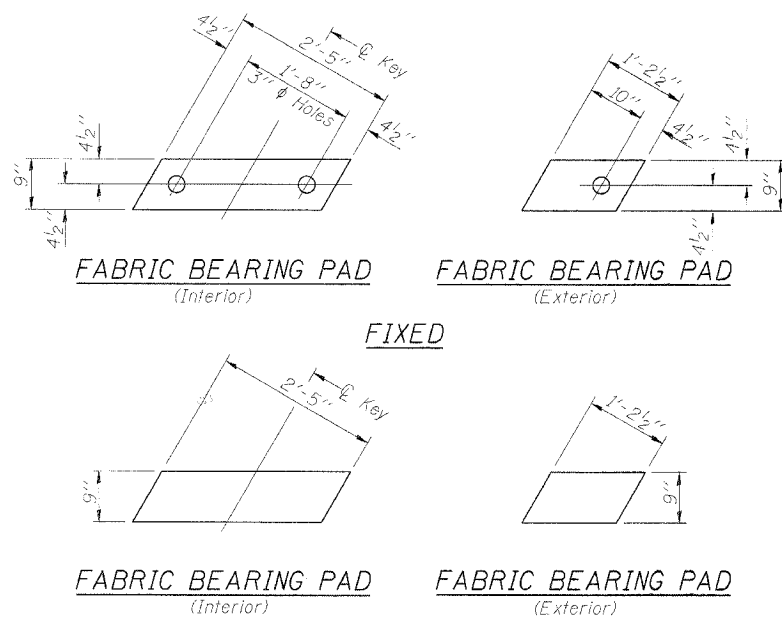


STATE OF ILLINOIS
DEPARTMENT OF TRANSPORTATION

ROUTE NO.	SECTION	COUNTY	TOTAL SHEETS	SHEET NO.
FAP 322	(23-BR-2)BR	FAYETTE	19	14
FED. ROAD DIST. NO. 7		ILLINOIS	FED. AID PROJ. DIST.	

SHEET NO. 6
11 SHEETS



NOTES

Prestressing steel shall be uncoated high strength, low relaxation 7-wire strand, Grade 270. The nominal diameter shall be 1/2" and the nominal cross-sectional area shall be 0.153 sq. in. Lifting loops shall be 2-1/2" φ-270 ksi strands, as shown.

The 1" φ rods in the transverse tie assembly shall be tightened to a snug fit and the threads set. Packets that receive transverse tie bar on outside shall be filled with grout after transverse tie assembly is in place.

Non prestressing steel shall conform to ASTM A 706 (IL MOD), Grade 60.

The bearing seat surfaces shall be adjusted by shimming to assure firm and even bearing. Two 1/8" fabric adjusting shims of the dimensions of the Exterior Bearing Pad shall be provided for each bearing.

Keyway surfaces shall be cleaned to remove form oil or other bond breaking material prior to shipment of the beams. Cleaning shall be done by sandblasting the keyway areas between top of the beam and the bottom edge of the key.

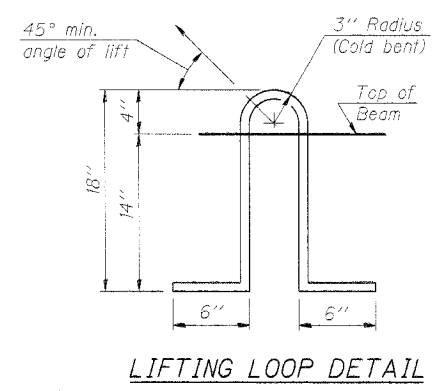
Corrosion Inhibitor, per Article 1020.05(b)(12) of the Standard Specifications, shall be used in the concrete for precast prestressed concrete deck beams.

Required Release Strength, f_{o/c}, shall be 4000 p.s.i.

BILL OF MATERIAL

Precast Prestressed Concrete Deck Beams (21" depth)	Sq. Ft.	5827
---	---------	------

BEAM DETAILS
US 51 / HICKORY CREEK
F.A.P. ROUTE 322
FAYETTE COUNTY
SN 026-0037



DESIGNED MBH	200
CHECKED NRF	EXAMINED
DRAWN MBH	PASSED
CHECKED NRF	ENGINEER OF BRIDGE DESIGN
	ENGINEER OF BRIDGES AND STRUCTURES