

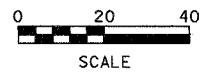
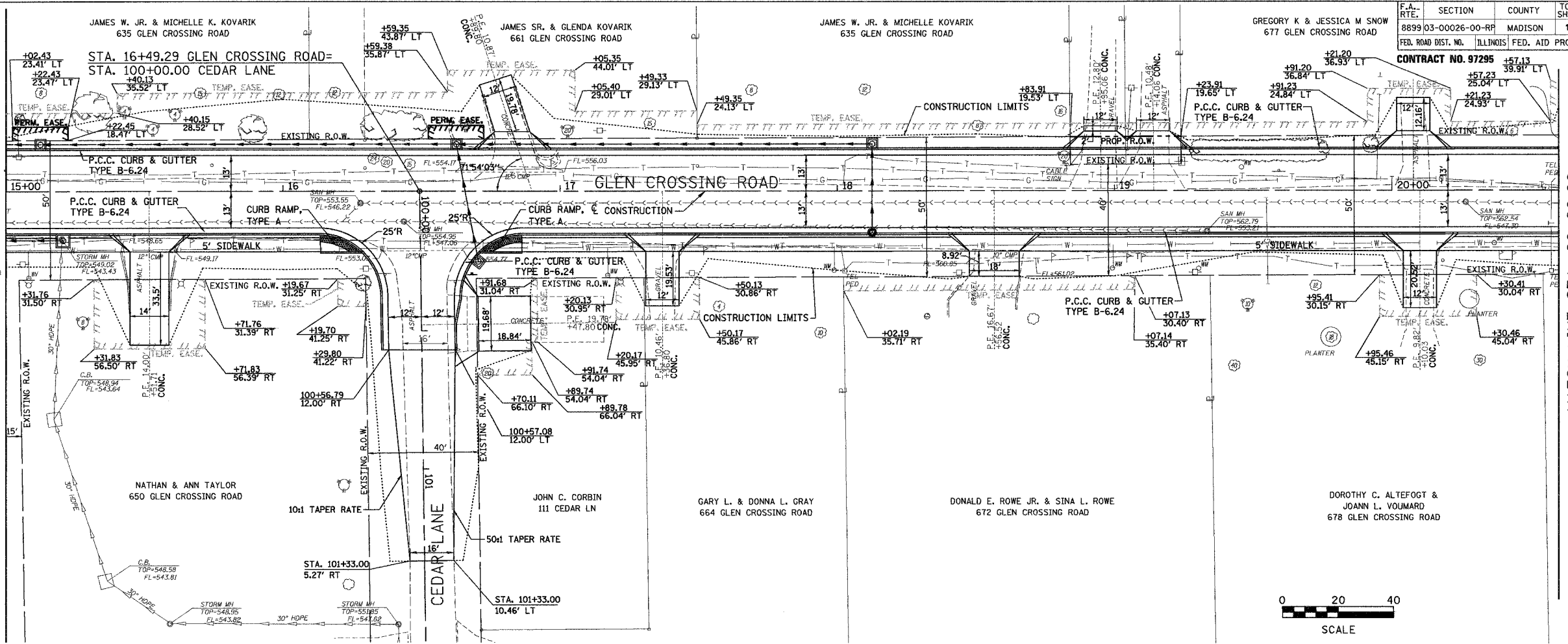
F.A. RTE.	SECTION	COUNTY	TOTAL SHEETS	SHEET NO.
8899	03-00026-00-RP	MADISON	107	39
FED. ROAD DIST. NO. ILLINOIS FED. AID PROJECT				

CONTRACT NO. 97295



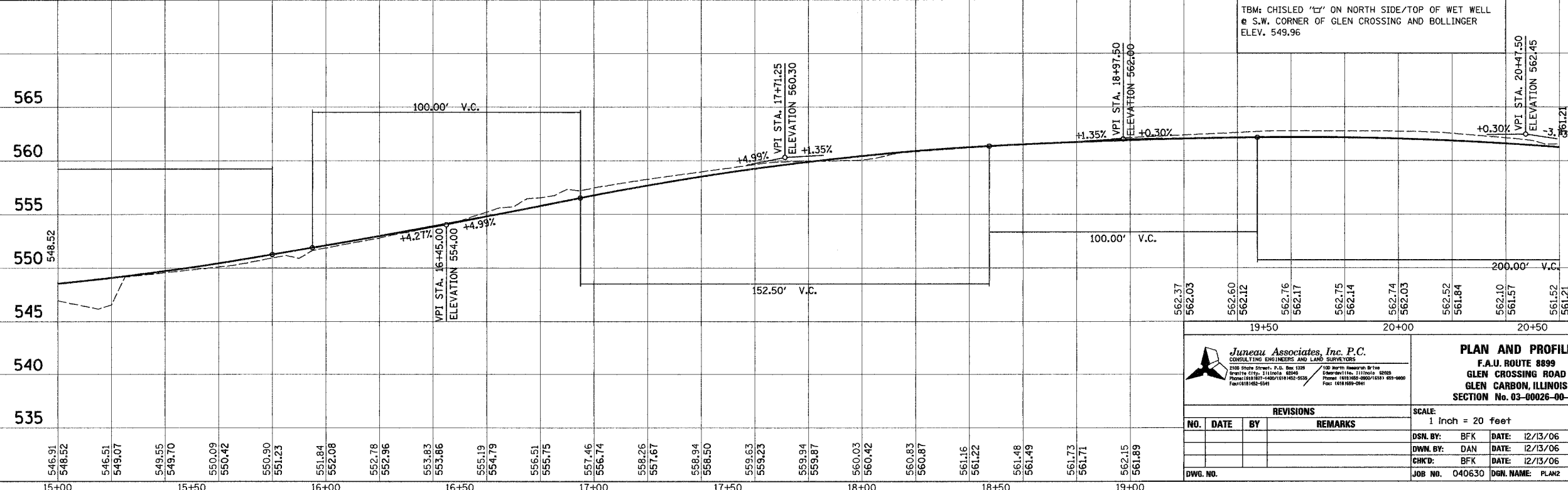
MATCH LINE STA. 15+00.00

MATCH LINE STA. 20+60.00



BY	DATE

BY	DATE



TBM: CHISLED 'L' ON NORTH SIDE/TOP OF WET WELL @ S.W. CORNER OF GLEN CROSSING AND BOLLINGER ELEV. 549.96

Juneau Associates, Inc. P.C.
 CONSULTING ENGINEERS AND LAND SURVEYORS
 2300 State Street, P.O. Box 1229
 Quincy, IL 62422
 Phone: (618) 297-1400 / (618) 297-5533
 Fax: (618) 297-5591

PLAN AND PROFILE
 F.A.U. ROUTE 8899
 GLEN CROSSING ROAD
 GLEN CARBON, ILLINOIS
 SECTION No. 03-00026-00-RP

REVISIONS				SCALE	
NO.	DATE	BY	REMARKS	1 Inch = 20 feet	

DSN. BY:	BFK	DATE:	12/13/06
DWN. BY:	DAN	DATE:	12/13/06
CHKD. BY:	BFK	DATE:	12/13/06
JOB NO.	040630	DGN. NAME:	PLAN2

SHEET
39
OF 107 SHTS