

DATE \_\_\_\_\_  
 BY \_\_\_\_\_  
 SURVEYED \_\_\_\_\_  
 PLOTTED \_\_\_\_\_  
 NOTE BOOK \_\_\_\_\_  
 TEMPLATE \_\_\_\_\_  
 AREAS CHECKED \_\_\_\_\_  
 NO. \_\_\_\_\_

DATE \_\_\_\_\_  
 BY \_\_\_\_\_  
 SURVEYED \_\_\_\_\_  
 PLOTTED \_\_\_\_\_  
 NOTE BOOK \_\_\_\_\_  
 TEMPLATE \_\_\_\_\_  
 AREAS CHECKED \_\_\_\_\_  
 NO. \_\_\_\_\_

**S.W. QUADRANT**

STATIONING ALONG GLEN CROSSING	OFFSET TO E.O.P. FOOT	E.O.P. ELEVATION FOOT	STATIONING ALONG JAMIE LYNN	OFFSET TO E.O.P. FOOT	DISTANCE ALONG RAD. FOOT
STA. 21+62.15	13.00 RT	557.94	STA. 100+12.50	36.83 RT	0.000
STA. 21+71.89	14.97 RT	557.45	STA. 100+14.60	27.12 RT	10.00
STA. 21+80.09	20.58 RT	556.96	STA. 100+20.33	19.00 RT	20.00
STA. 21+85.46	28.94 RT	556.60	STA. 100+28.76	13.75 RT	30.00
STA. 21+87.15	37.66 RT	556.28	STA. 100+37.50	12.17 RT	38.93

**S.E. QUADRANT**

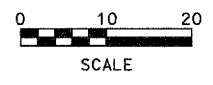
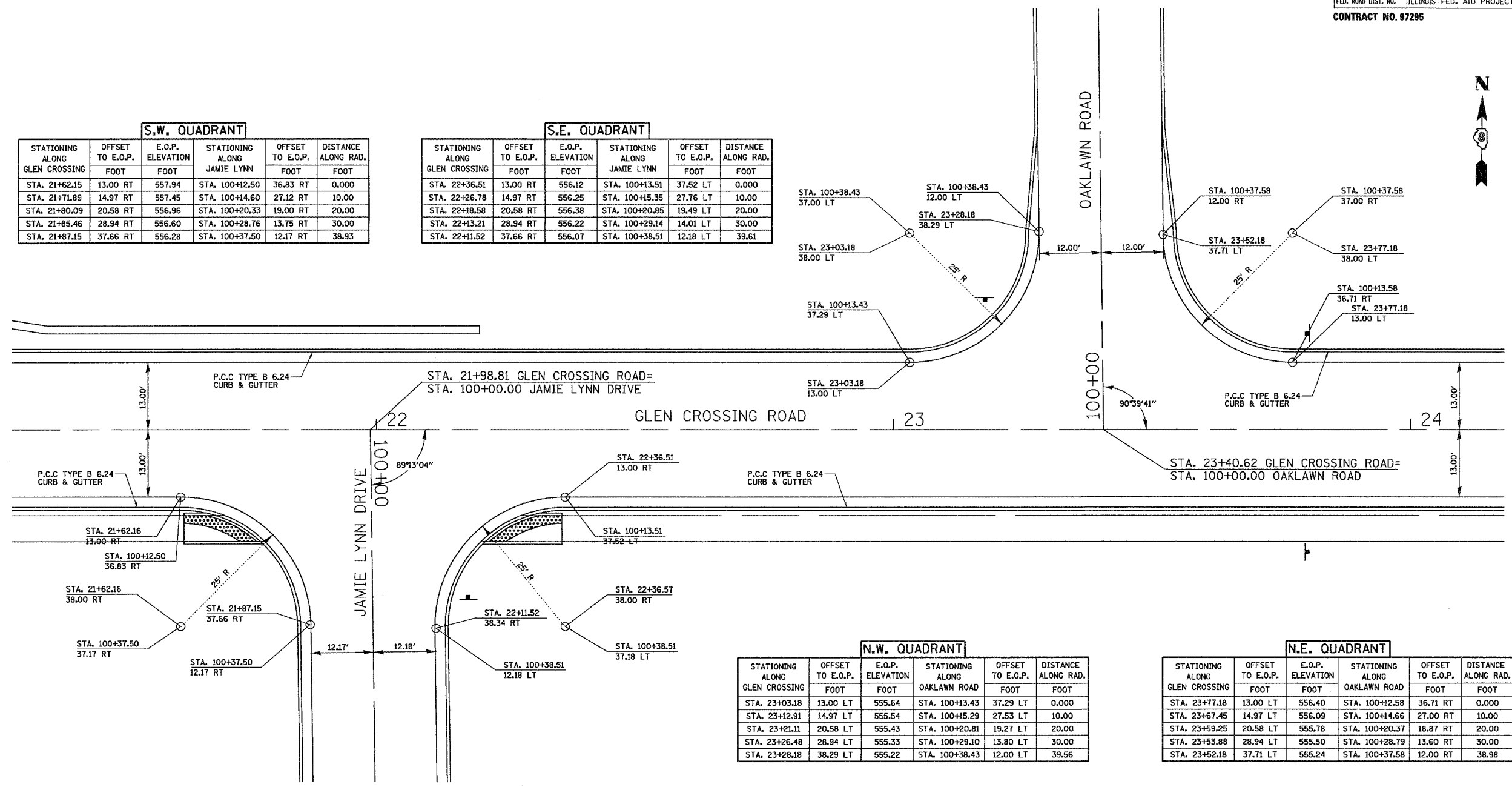
STATIONING ALONG GLEN CROSSING	OFFSET TO E.O.P. FOOT	E.O.P. ELEVATION FOOT	STATIONING ALONG JAMIE LYNN	OFFSET TO E.O.P. FOOT	DISTANCE ALONG RAD. FOOT
STA. 22+36.51	13.00 RT	556.12	STA. 100+13.51	37.52 LT	0.000
STA. 22+26.78	14.97 RT	556.25	STA. 100+15.35	27.76 LT	10.00
STA. 22+18.58	20.58 RT	556.38	STA. 100+20.85	19.49 LT	20.00
STA. 22+13.21	28.94 RT	556.22	STA. 100+29.14	14.01 LT	30.00
STA. 22+11.52	37.66 RT	556.07	STA. 100+38.51	12.18 LT	39.61

**N.W. QUADRANT**

STATIONING ALONG GLEN CROSSING	OFFSET TO E.O.P. FOOT	E.O.P. ELEVATION FOOT	STATIONING ALONG OAKLAWN ROAD	OFFSET TO E.O.P. FOOT	DISTANCE ALONG RAD. FOOT
STA. 23+03.18	13.00 LT	555.64	STA. 100+13.43	37.29 LT	0.000
STA. 23+12.91	14.97 LT	555.54	STA. 100+15.29	27.53 LT	10.00
STA. 23+21.11	20.58 LT	555.43	STA. 100+20.81	19.27 LT	20.00
STA. 23+26.48	28.94 LT	555.33	STA. 100+29.10	13.80 LT	30.00
STA. 23+28.18	38.29 LT	555.22	STA. 100+38.43	12.00 LT	39.56

**N.E. QUADRANT**

STATIONING ALONG GLEN CROSSING	OFFSET TO E.O.P. FOOT	E.O.P. ELEVATION FOOT	STATIONING ALONG OAKLAWN ROAD	OFFSET TO E.O.P. FOOT	DISTANCE ALONG RAD. FOOT
STA. 23+77.18	13.00 LT	556.40	STA. 100+12.58	36.71 RT	0.000
STA. 23+67.45	14.97 LT	556.09	STA. 100+14.66	27.00 RT	10.00
STA. 23+59.25	20.58 LT	555.78	STA. 100+20.37	18.87 RT	20.00
STA. 23+53.88	28.94 LT	555.50	STA. 100+28.79	13.60 RT	30.00
STA. 23+52.18	37.71 LT	555.24	STA. 100+37.58	12.00 RT	38.98



<p>Juneau Associates, Inc. P.C.          CONSULTING ENGINEERS AND LAND SURVEYORS          200 Stone Street, P.O. Box 1232 / 100 North University Drive          Granite City, Illinois 62040 / Granite City, Illinois 62040          Phone: (618) 269-4000 / Fax: (618) 269-4000          Fax: (618) 269-4041</p>		<p><b>GEOMETRICS</b>          F.A.U. ROUTE 8899          GLEN CROSSING ROAD          GLEN CARBON, ILLINOIS          SECTION No. 03-00026-00-RP</p>									
<p>REVISIONS</p> <table border="1"> <thead> <tr> <th>NO.</th> <th>DATE</th> <th>BY</th> <th>REMARKS</th> </tr> </thead> <tbody> <tr> <td> </td> <td> </td> <td> </td> <td> </td> </tr> </tbody> </table>		NO.	DATE	BY	REMARKS					<p>SCALE:          1 Inch = 10 feet</p>	
NO.	DATE	BY	REMARKS								
<p>DWG. NO.</p>		<p>DSN. BY: BFK          DWN. BY: DAN          CHK'D: BFK</p>	<p>DATE: 12/13/06          DATE: 12/13/06          DATE: 12/13/06</p>								
<p>JOB NO. 040630</p>		<p>DGN. NAME: G202</p>	<p>SHEET          57          OF 107 SHTS</p>								