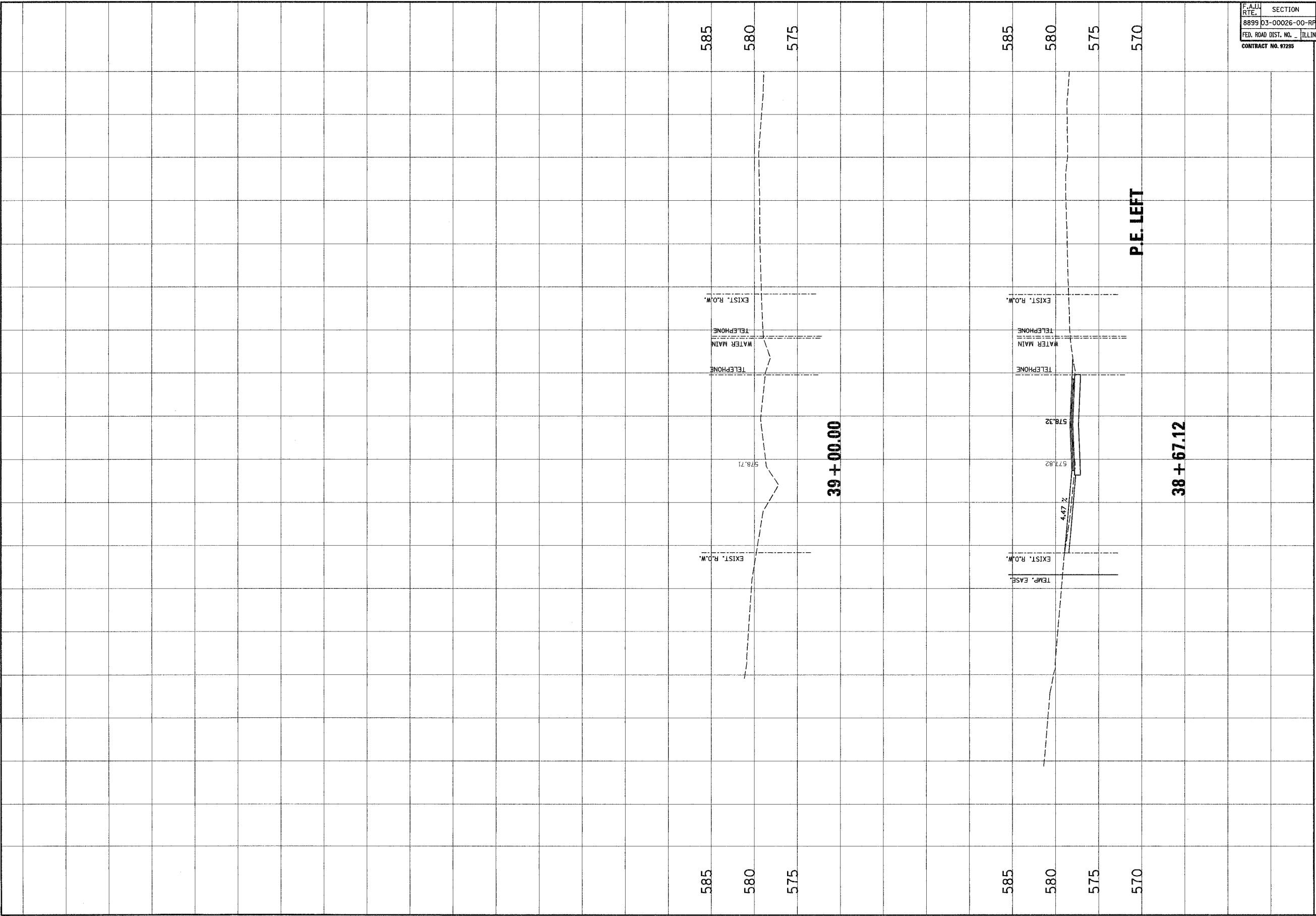



F.A.U. RTE.	SECTION	COUNTY	TOTAL SHEETS	SHEET NO.
8899	D3-00026-00-RP	MADISON	107	99
FED. ROAD DIST. NO. - ILLINOIS		FED. AID PROJECT		
CONTRACT No. 97295				



NO.	DATE	BY	REMARKS


**Janneau Associates, Inc. P.C.**  
 300 South Third Street, Suite 200  
 Madison, Illinois 62201  
 Phone: (618) 241-1100  
 Fax: (618) 241-1101  
 For Information Only

CLIENT/PROJECT : GLEN CROSSING ROAD IMPROVEMENT  
 SECTION No. 03-00026-00-RP

## GLEN CROSSING ROAD CROSS SECTIONS

DESIGNED BY	SAS
DRAWN BY	SAS
CHECKED BY	DFK
JOB NO.	E040630
DATE	12/2/06
SCALE	HORIZ. 1 inch = 10 feet VERT. 1 inch = 5 feet
SHEET No.	99