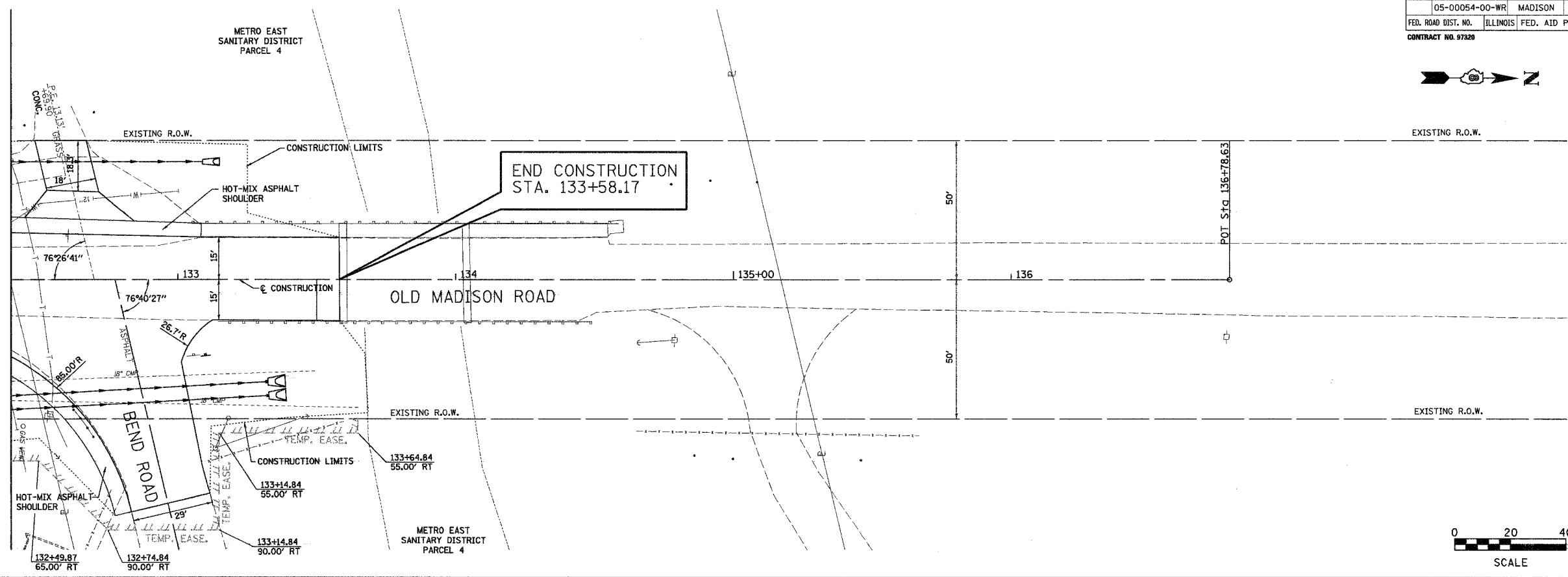


F.A.U. RTE.	SECTION	COUNTY	TOTAL SHEETS	SHEET NO.
	05-00054-00-WR	MADISON	110	36
FED. ROAD DIST. NO.	ILLINOIS	FED. AID PROJECT		
CONTRACT NO. 97320				

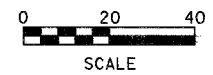


FINAL SURVEY PLOTTED	BY	DATE
NOTE BOOK TEMPLATE		
AREAS CHECKED		
NO.		

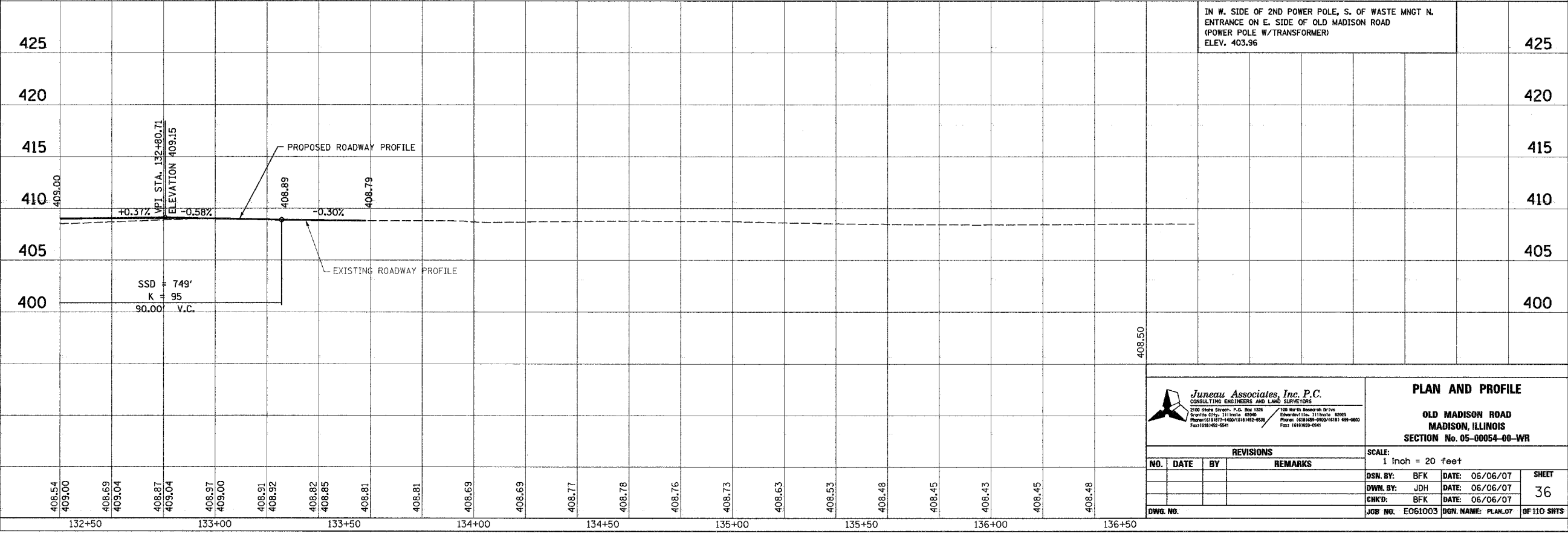
MATCH LINE STA. 132+40.00



**END CONSTRUCTION STA. 133+58.17**



ORIGINAL SURVEY PLOTTED	BY	DATE
NOTE BOOK TEMPLATE		
AREAS CHECKED		
NO.		



IN W. SIDE OF 2ND POWER POLE, S. OF WASTE MNGT N. ENTRANCE ON E. SIDE OF OLD MADISON ROAD (POWER POLE W/T TRANSFORMER) ELEV. 403.96

**Juneau Associates, Inc. P.C.**  
CONSULTING ENGINEERS AND LAND SURVEYORS  
2102 Shaw Street, P.O. Box 1235  
Maitland, FL 32751  
Phone: (407) 891-1422 Fax: (407) 891-1422

**PLAN AND PROFILE**  
**OLD MADISON ROAD**  
**MADISON, ILLINOIS**  
**SECTION No. 05-00054-00-WR**

REVISIONS	
NO.	DATE

SCALE: 1 inch = 20 feet	
DSN. BY: BFK	DATE: 06/06/07
DWN. BY: JDH	DATE: 06/06/07
CHKD: BFK	DATE: 06/06/07
DWG. NO. E061003	DGN. NAME: PLAN.DT

SHEET 36 OF 110 SWTS