

CONTRACT NUMBER 98645				
F.A.P. RTE.	SECTION	COUNTY	TOTAL SHEETS	SHEET NO.
853	6B-1	FRANKLIN	44	1
			+1	
			45	

STATE OF ILLINOIS
DEPARTMENT OF TRANSPORTATION
DIVISION OF HIGHWAYS

**PROPOSED
HIGHWAY PLANS**

F.A.P. 853 ROUTE (IL 14)
SECTION 6B-1
PROJECT: BRF-0869(030)
FRANKLIN COUNTY
C-99-018-07

**BRIDGE REPLACEMENT ON ILLINOIS ROUTE 14
OVER DRUMMOND BRANCH**

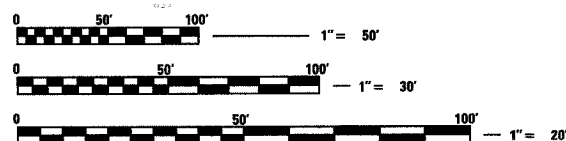
D-99-015-03



FOR INDEX OF SHEETS, SEE SHEET NO. 2

TRAFFIC DATA
2008 ADT = 2800
5.3% TRUCKS
POSTED SPEED 55 MPH

TOWNSHIP: BENTON



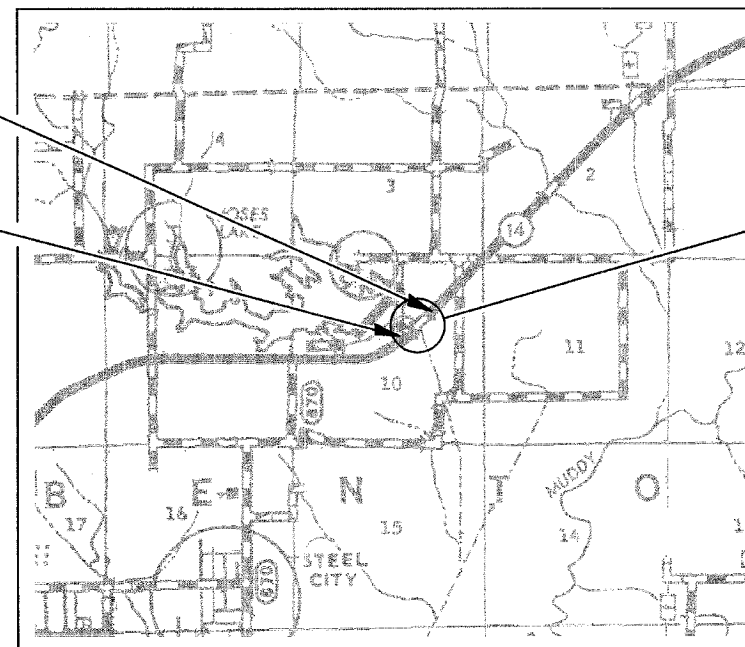
FULL SIZE PLANS HAVE BEEN PREPARED USING STANDARD ENGINEERING SCALES. REDUCED SIZED PLANS WILL NOT CONFORM TO STANDARD SCALES. IN MAKING MEASUREMENTS ON REDUCED PLANS, THE ABOVE SCALES MAY BE USED.

J.U.L.I.E.
JOINT UTILITY LOCATION INFORMATION FOR EXCAVATION
1-800-892-0123 OR WWW.JULIECALL.COM

CONTRACT NO. 98645

PROPOSED SECTION 6B-1 ENDS
STA 153+25

PROPOSED SECTION 6B-1 BEGINS
STA. 146+30



PROPOSED BRIDGE
OVER DRUMMOND BRANCH
STRUCTURE NO. 028-0075
SINGLE SPAN STEEL W27 BRIDGE;
58'-6" BK TO BK ABUTMENTS; 0° SKEW
CL STR STA. 149+71.25
EXISTING SN 028-0023

SECTION 6B-1 PROJECT LENGTH

ROADWAY LENGTH = 636 FT 6 IN
BRIDGE LENGTH = 58 FT 6 IN
NET LENGTH OF PROJECT = 695 FT

STATE OF ILLINOIS
DEPARTMENT OF TRANSPORTATION
DIVISION OF HIGHWAYS

SUBMITTED *June 19, 2007*
William C. Lurie
DEPUTY DIRECTOR OF HIGHWAYS, REGION ENGINEER

October 12, 2007
Eric E. Haral
ENGINEER OF DESIGN AND ENVIRONMENT

October 12, 2007
Milton R. Sen
DIRECTOR OF HIGHWAYS, CHIEF ENGINEER

**PRINTED BY THE AUTHORITY
OF THE STATE OF ILLINOIS**

PROJECT ENGINEER: DAVID PICHE
DESIGNER: LEANNE CORNELL