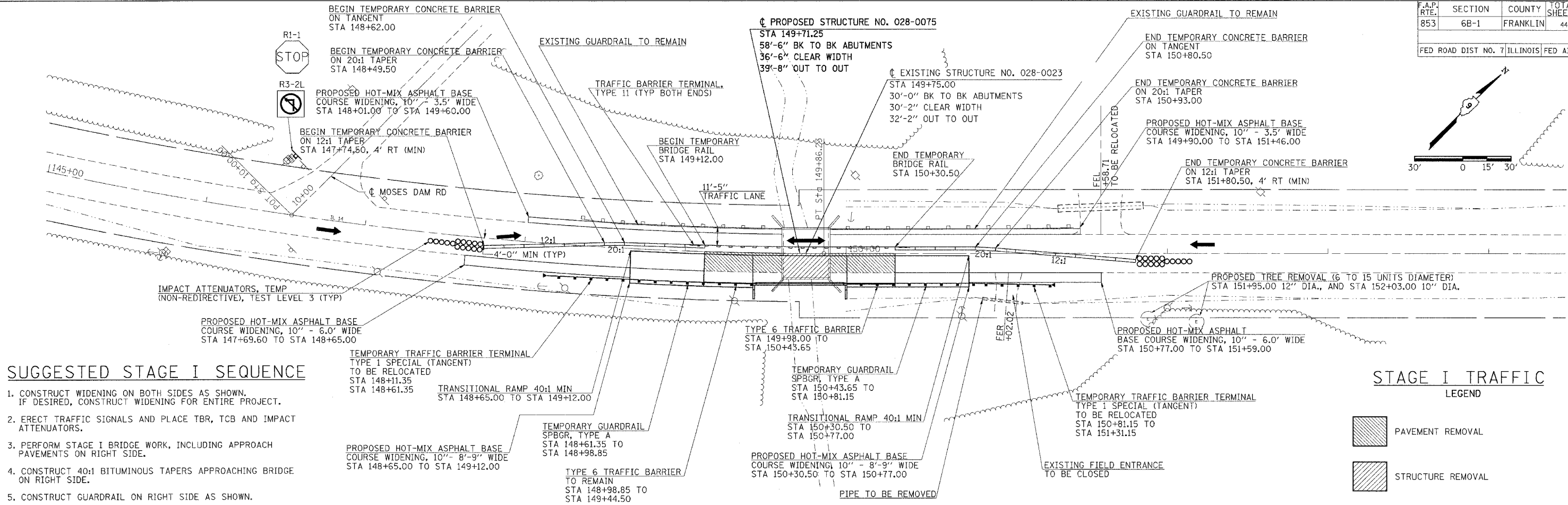
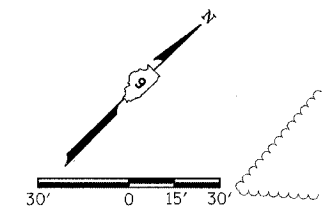


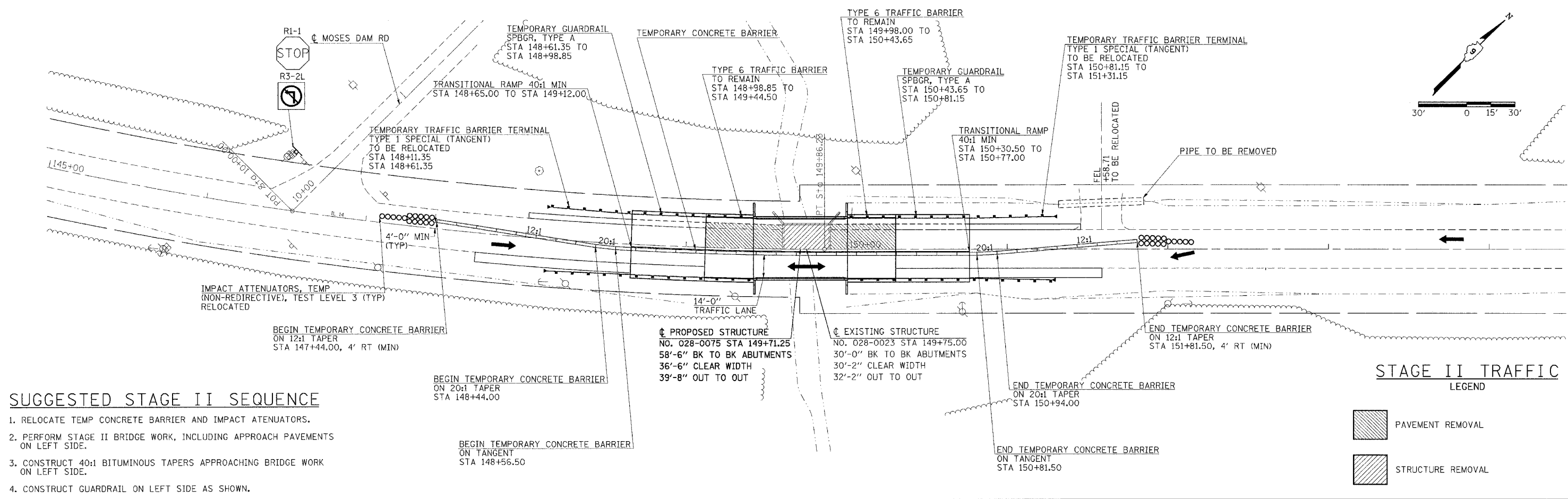
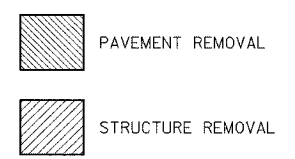
| | | | | |
|--|---------|----------|--------------|-----------|
| CONTRACT NUMBER 98645 | | | | |
| F.A.P. RTE. | SECTION | COUNTY | TOTAL SHEETS | SHEET NO. |
| 853 | 6B-1 | FRANKLIN | 44 | 9 |
| FED ROAD DIST NO. 7 ILLINOIS FED AID PROJECT | | | | |



SUGGESTED STAGE I SEQUENCE

1. CONSTRUCT WIDENING ON BOTH SIDES AS SHOWN. IF DESIRED, CONSTRUCT WIDENING FOR ENTIRE PROJECT.
2. ERECT TRAFFIC SIGNALS AND PLACE TBR, TCB AND IMPACT ATTENUATORS.
3. PERFORM STAGE I BRIDGE WORK, INCLUDING APPROACH PAVEMENTS ON RIGHT SIDE.
4. CONSTRUCT 40:1 BITUMINOUS TAPERS APPROACHING BRIDGE ON RIGHT SIDE.
5. CONSTRUCT GUARDRAIL ON RIGHT SIDE AS SHOWN.

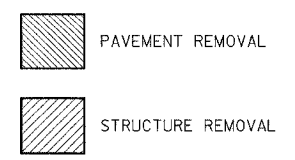
STAGE I TRAFFIC LEGEND



SUGGESTED STAGE II SEQUENCE

1. RELOCATE TEMP CONCRETE BARRIER AND IMPACT ATENUATORS.
2. PERFORM STAGE II BRIDGE WORK, INCLUDING APPROACH PAVEMENTS ON LEFT SIDE.
3. CONSTRUCT 40:1 BITUMINOUS TAPERS APPROACHING BRIDGE WORK ON LEFT SIDE.
4. CONSTRUCT GUARDRAIL ON LEFT SIDE AS SHOWN.

STAGE II TRAFFIC LEGEND



6/7/2007 c:\projects\98645\98645.dgn 30.0000 / IN. halsreadw