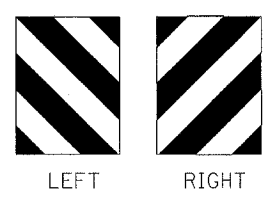
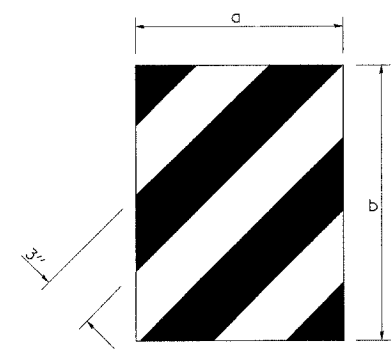


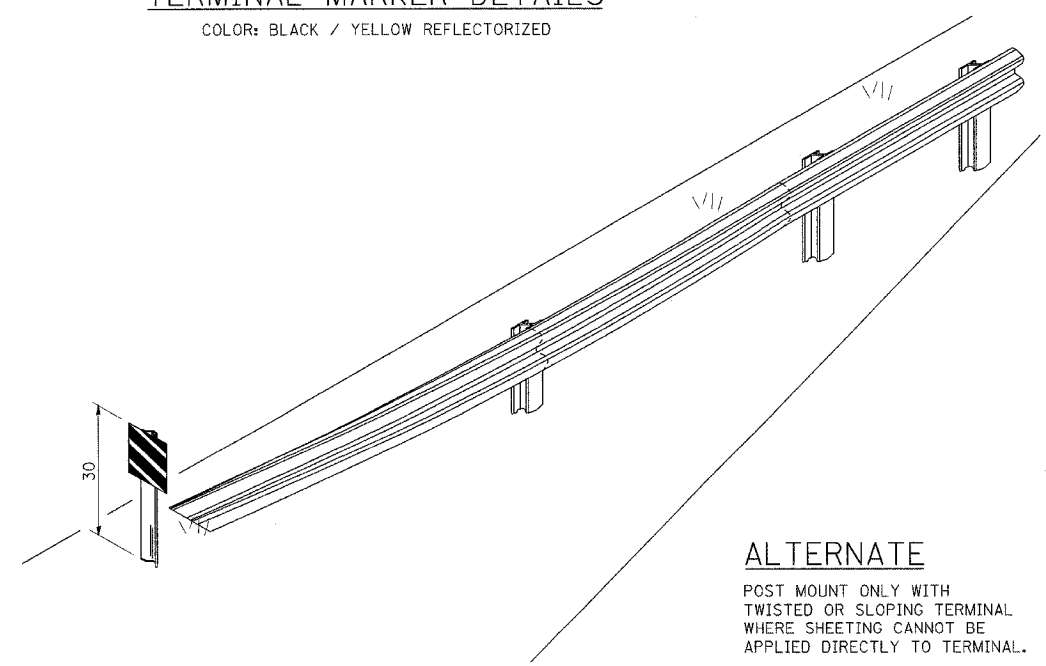
CASE I

CASE II

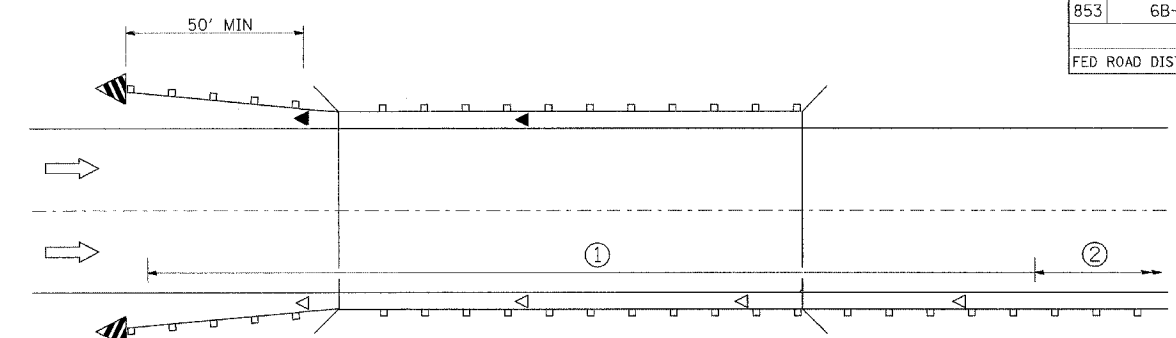


DIMENSION	CASE I	CASE II
a	15"	18"
b	20"	16"

TERMINAL MARKER DETAILS
 COLOR: BLACK / YELLOW REFLECTORIZED

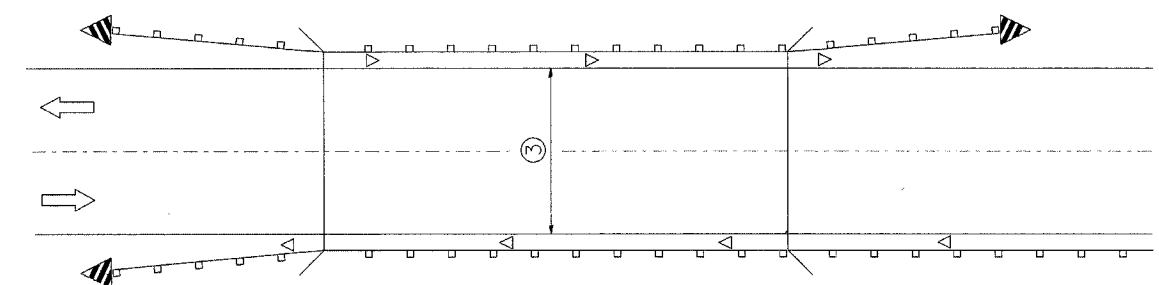


ALTERNATE
 POST MOUNT ONLY WITH
 TWISTED OR SLOPING TERMINAL
 WHERE SHEETING CANNOT BE
 APPLIED DIRECTLY TO TERMINAL.



- ① SPACING 80 FEET MAX FOR FIRST 400 FEET OR CURVE SPACING SHOWN IN STANDARD 635001, WHICHEVER IS LESS (MIN 4 REFLECTORS REGARDLESS OF LENGTH).
- ② AFTER 400 FEET, TRANSITION TO NORMAL DELINEATOR SPACING SHOWN IN STANDARD 635001, AND CONTINUE AS REQUIRED.

ONE-WAY TRAFFIC

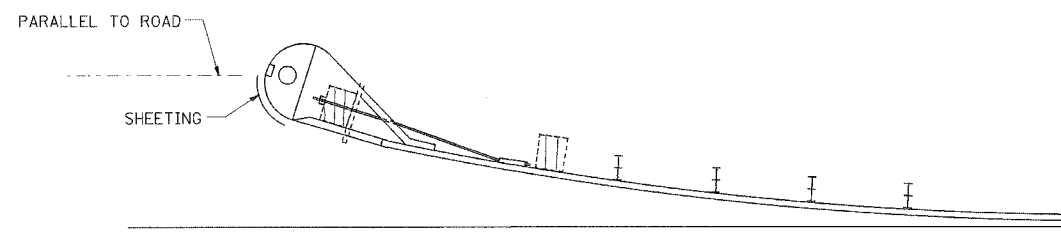


- ③ BIDIRECTIONAL SILVER/SILVER SHOULD BE USED IN LIEU OF MONODIRECTIONAL SILVER ON BOTH SIDES OF TWO-LANE BRIDGES WHERE THE PAVEMENT IS LESS THAN 24 IN WIDER THAN THE PAVEMENT APPROACHING THE BRIDGE.

- ◁ MONODIRECTIONAL SILVER
- ▲ MONODIRECTIONAL AMBER
- ▤ TERMINAL MARKER - BLACK/YELLOW LEFT OR RIGHT AS APPROPRIATE

TWO-WAY TRAFFIC

GUARDRAIL / BARRIER WALL /
 BRIDGE RAIL REFLECTORS



SHEETING POSITION: CASE II

ALL DIMENSIONS ARE IN INCHES
 UNLESS OTHERWISE SHOWN.

6/5/2007
 c:\p\proj\sa\98645\98645-6B-1\98645-6B-1.dgn
 10:08:06 AM / 11/11/2007