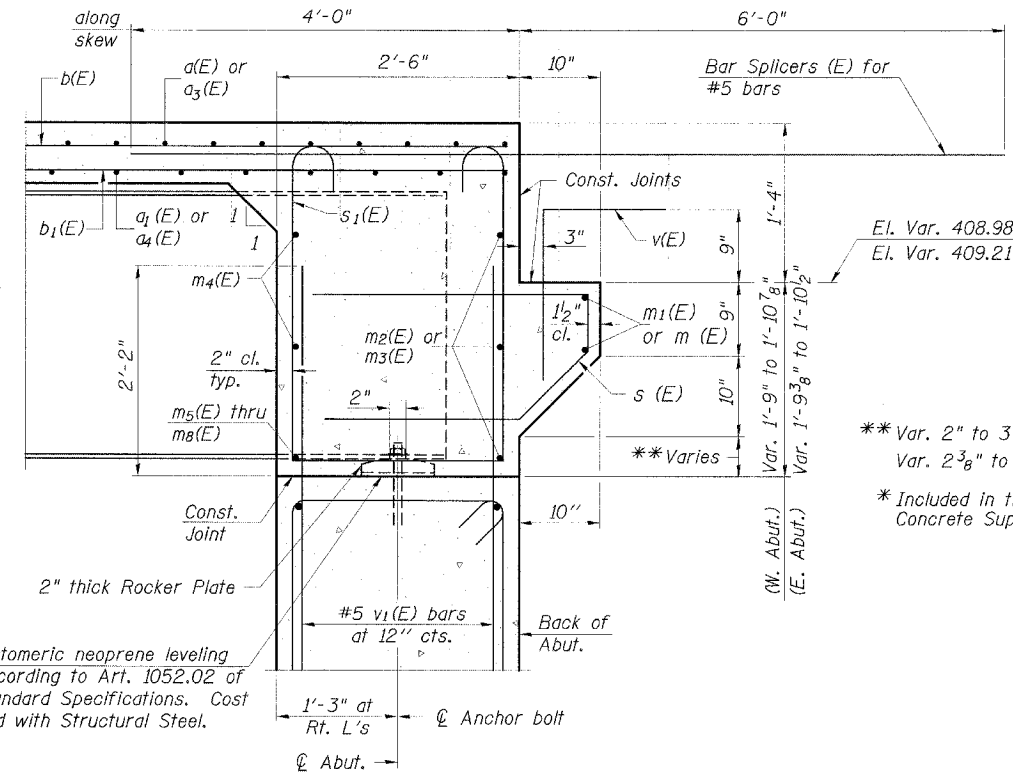


DIAPHRAGM ELEVATION AT ABUTMENT
(Looking East at East Abut., W. Abut. similar)



SECTION A-A
Dimensions at right angles to abutment, except as shown.

1/8" elastomeric neoprene leveling pad according to Art. 1052.02 of the Standard Specifications.

El. Var. 408.98 to 410.48 (W. Abut.)
El. Var. 409.21 to 410.17 (E. Abut.)

** Var. 2" to 3 7/8" (W. Abut.)
Var. 2 3/8" to 3 1/2" (E. Abut.)

* Included in the cost of Concrete Superstructure

MIN. BAR LAP
#6 bar = 2'-9"

- NOTES:**
1. Reinforcement bars in diaphragm are billed with superstructure on Sheet 9 of 18.
 2. Concrete in diaphragm is included with Concrete Superstructure on Sheet 9 of 18.
 3. For details of bars s(E) & s1(E) see Sheet 9 of 18.
 4. The s(E) and s1(E) bars shall be placed parallel to the beams. Spacing for these bars shall be at right angles to the beams.
 5. For location of holes in web see Sheet 11 of 18.
 6. For anchor bolt details see Sheet 12 of 18.
 7. For bar splicer details see Sheet 15 of 18.

REVISIONS	
NAME	DATE

ILLINOIS DEPARTMENT OF TRANSPORTATION
ABUTMENT DIAPHRAGM DETAILS
F.A.P. ROUTE 853 (IL. RTE. 14)
ILLINOIS ROUTE 14 OVER
DRUMMOND BRANCH
SECTION 6B-1 STA. 149+71.25
STR. NO. 028-0075 - FRANKLIN COUNTY
SCALE: NONE DRAWN BY: GLD
DATE: 6/6/07 CHECKED BY: WLB

CMT
CRAWFORD MURPHY & TILLY, INC.
CONSULTING ENGINEERS
SPRINGFIELD, IL ■ AURORA, IL ■ ST. LOUIS, MO
ROCKFORD, IL ■ PEORIA, IL ■ CHICAGO, IL

L:\DOT\060660\SN_0280075\Drawings\Abutment Details.dgn 6/5/2007