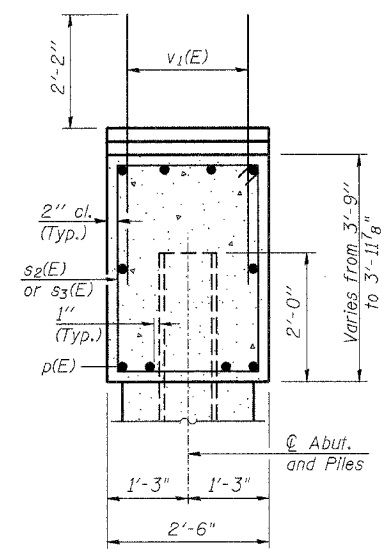
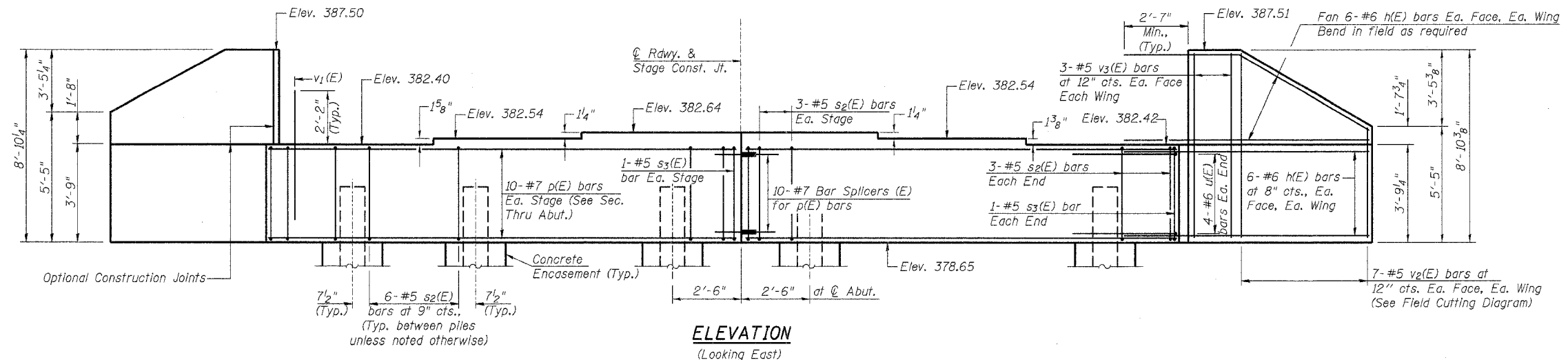


Contract # 98776

Notes:  
Pour steps monolithically with cap.  
Space reinforcement in cap to miss Anchor Bolts.

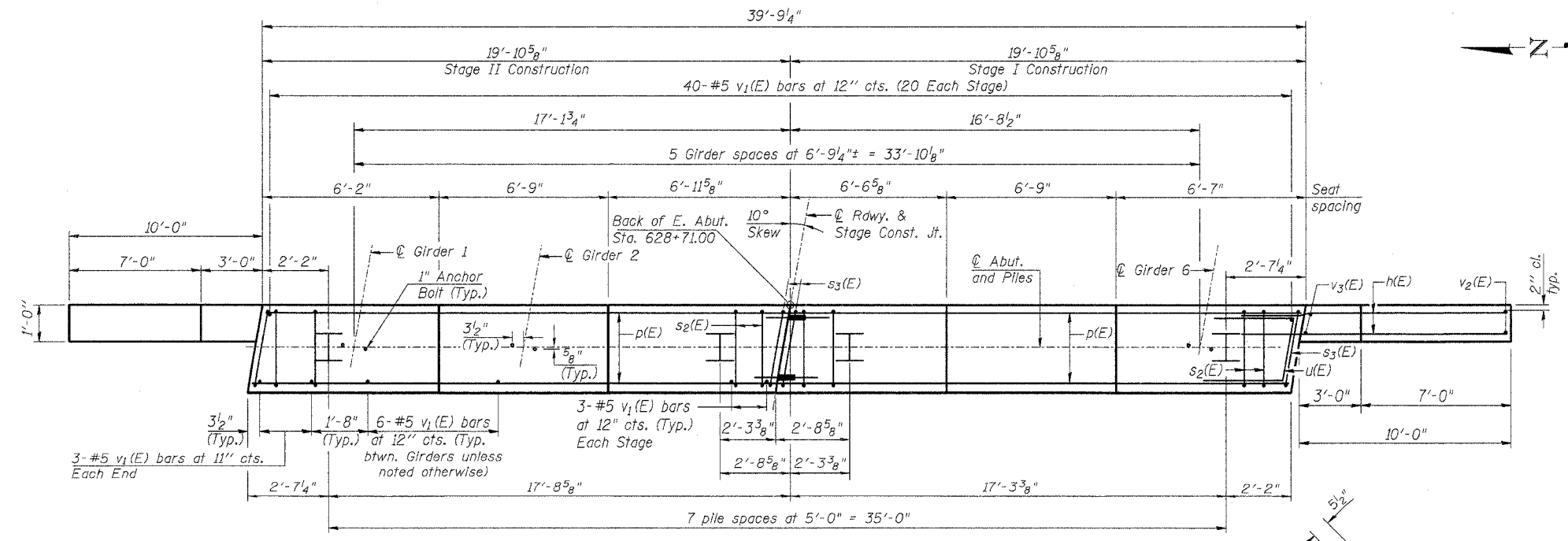


SEC. THRU ABUT.  
(Dimensions at Rt. L's)

BILL OF MATERIAL  
(East Abutment)

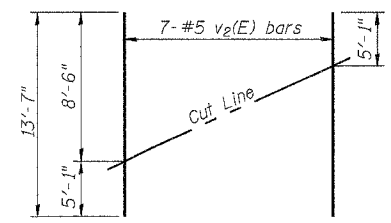
Bar	No.	Size	Length	Shape
h(E)	48	#6	12'-6"	—
p(E)	20	#7	19'-7"	—
s2(E)	48	#5	12'-1"	□
s3(E)	4	#5	12'-3"	□
u(E)	8	#6	7'-3"	┘
v1(E)	76	#5	4'-4"	—
v2(E)	14	#5	13'-7"	—
v3(E)	12	#5	8'-6"	—
Structure Excavation		Cu. Yd.	130	
Concrete Structures		Cu. Yd.	14.9	
Reinforcement Bars, Epoxy Coated		Pound	3100	
Furnishing Steel Piles HP12x53		Foot	232	
Driving Piles		Foot	232	
Pile Shoes		Each	8	
Concrete Encasement		Cu. Yd.	2.8	
Anchor Bolts, 1"		Each	12	

For details of Bar Splacers, see sheet 13 of 16.  
For details of piles and Concrete Encasement, see sheet 14 of 16.  
For details of Integral Abutment Bearing, see sheet 9 of 16.  
For drainage details, see Section Thru Integral Abutment on sheet 2 of 16.



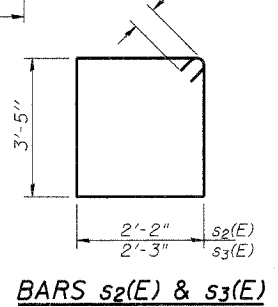
PLAN

PILE DATA  
Type: Steel HP12x53 with pile shoes  
Nominal Required Bearing: 419 klps  
Factored Resistance Available: 209 klps  
Est. Length: 29 ft  
No. Production Piles: 8

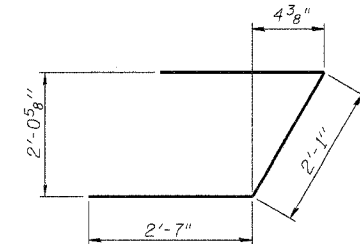


FIELD CUTTING DIAGRAM

Order v2(E) full length. Cut as shown and use remainder of bars in opposite face.



BARS s2(E) & s3(E)



BAR u(E)

LIN ENGINEERING, LTD.  
Consulting Engineers  
Chatham, Illinois

REVISIONS	
NAME	DATE

ILLINOIS DEPARTMENT OF TRANSPORTATION  
EAST ABUTMENT  
ILLINOIS ROUTE 146 OVER  
BUCK RUN CREEK  
F.A.P. ROUTE 885 - SEC. (107A)B-1  
JOHNSON COUNTY  
STA. 628+25.00  
STRUCTURE NO. 044-0059