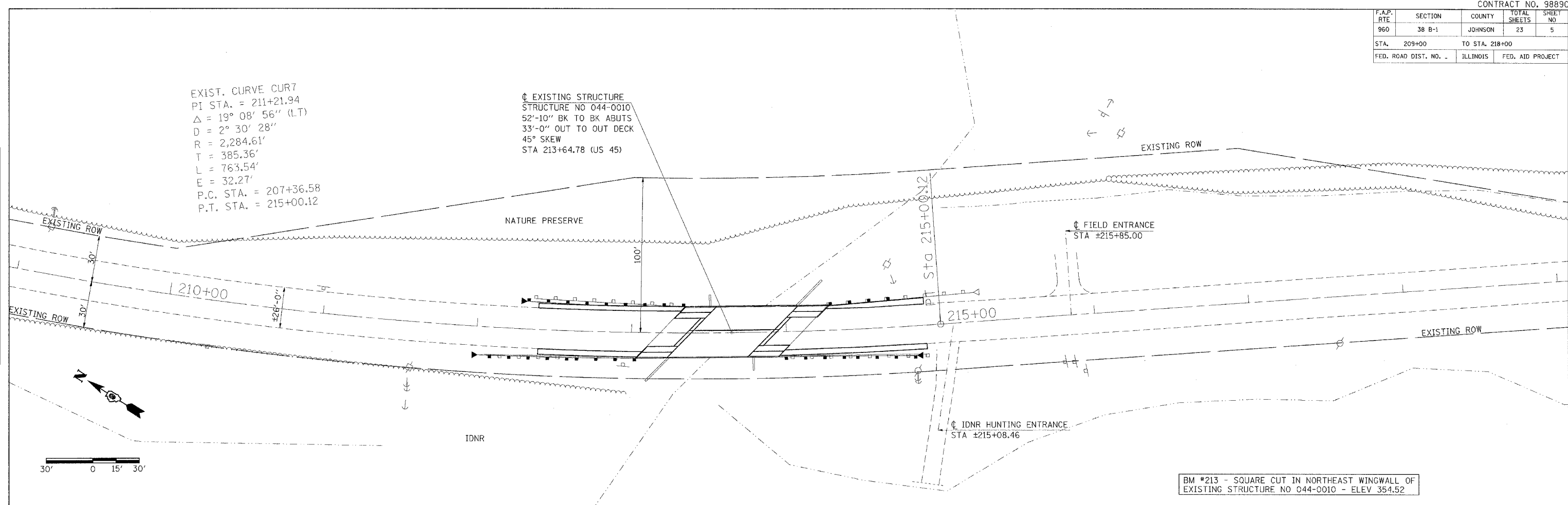


F.A.P. RTE	SECTION	COUNTY	TOTAL SHEETS	SHEET NO
960	38 B-1	JOHNSON	23	5
STA. 209+00		TO STA. 218+00		
FED. ROAD DIST. NO. .		ILLINOIS	FED. AID PROJECT	

EXIST. CURVE CUR7
 PI STA. = 211+21.94
 $\Delta = 19^\circ 08' 56''$ (L.T.)
 $D = 2^\circ 30' 28''$
 $R = 2,284.61'$
 $T = 385.36'$
 $L = 763.54'$
 $E = 32.27'$
 P.C. STA. = 207+36.58
 P.T. STA. = 215+00.12

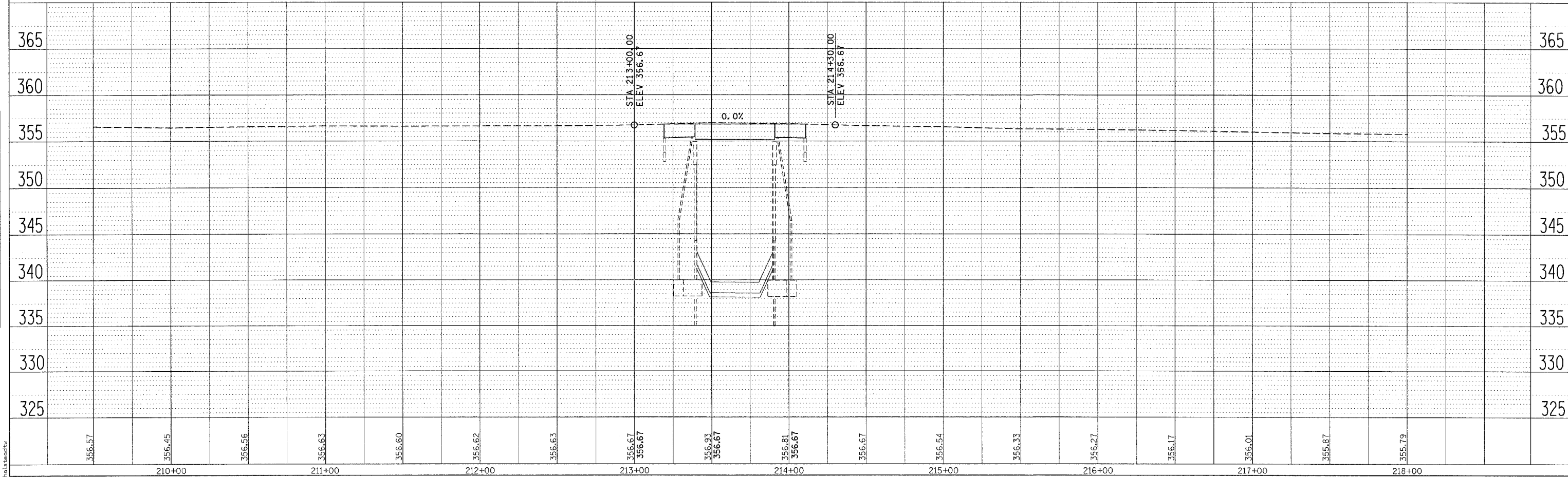
EXISTING STRUCTURE
 STRUCTURE NO 044-0010
 52'-10" BK TO BK ABUTS
 33'-0" OUT TO OUT DECK
 45° SKEW
 STA 213+64.78 (US 45)

PLAN	SURVEYED	BY	DATE
	ALIGNED		
	CHECKED		
	NOTE BOOK		
	NO.		



BM #213 - SQUARE CUT IN NORTHEAST WINGWALL OF
 EXISTING STRUCTURE NO 044-0010 - ELEV 354.52

PROFILE	SURVEYED	BY	DATE
	GRADES		
	CHECKED		
	NOTE BOOK		
	NO.		



8/6/2007
 c:\p\c\j\ee\ba\49932804\d\92284pl.dgn
 30.0000' / IN.
 Plot Scale

**PLANPROFILE - SN 044-0010
 US 45 OVER CAVE CREEK**