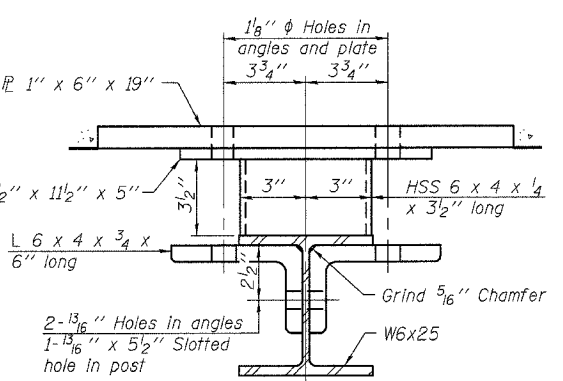
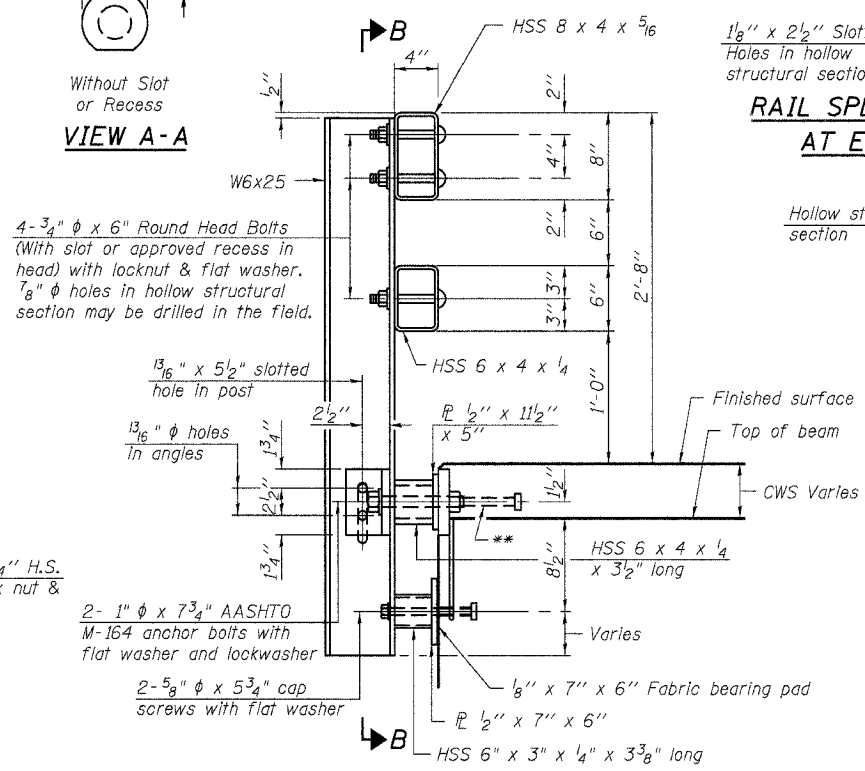


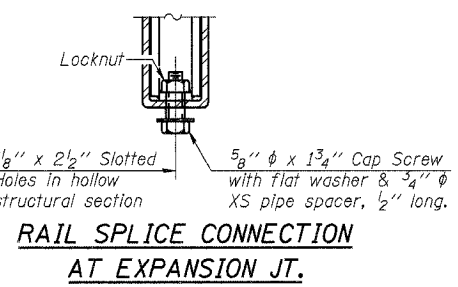
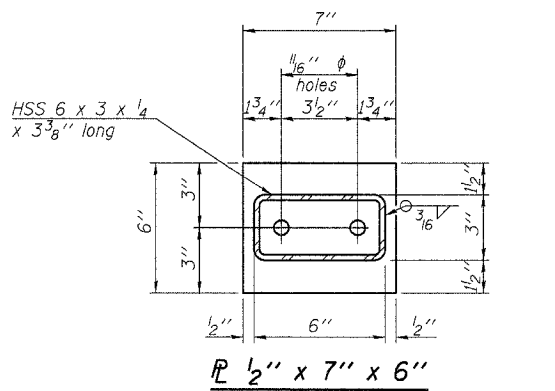
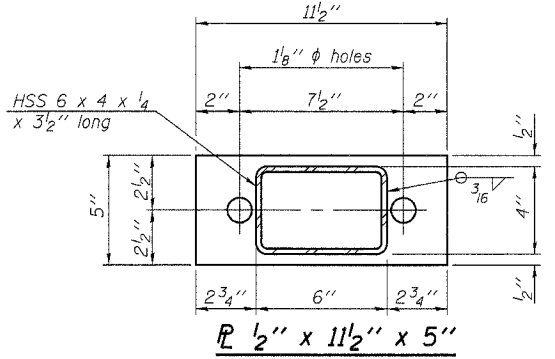
**SECTION B-B**



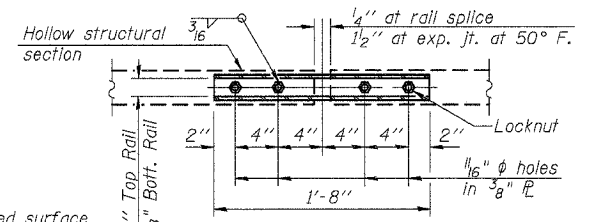
**SECTION C-C**



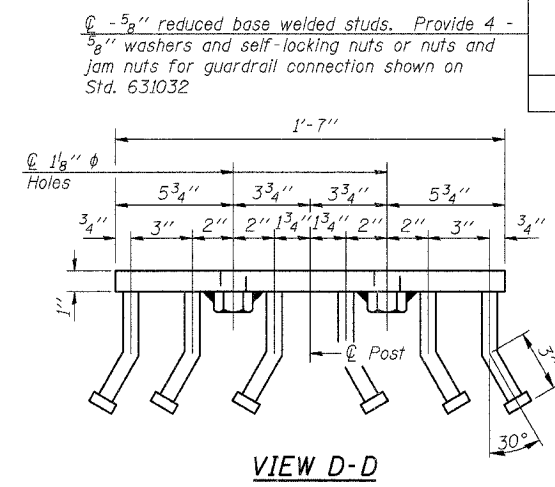
**SECTION AT RAIL POST**



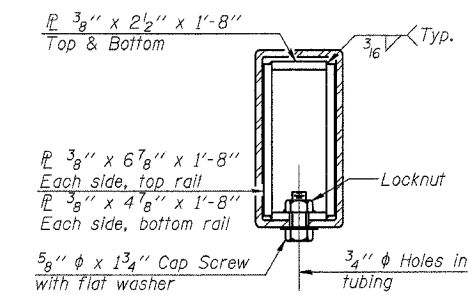
**RAIL SPLICE CONNECTION AT EXPANSION JT.**



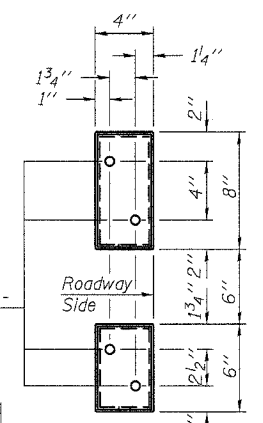
**PLAN-BOTT. SPLICE P TYPICAL**



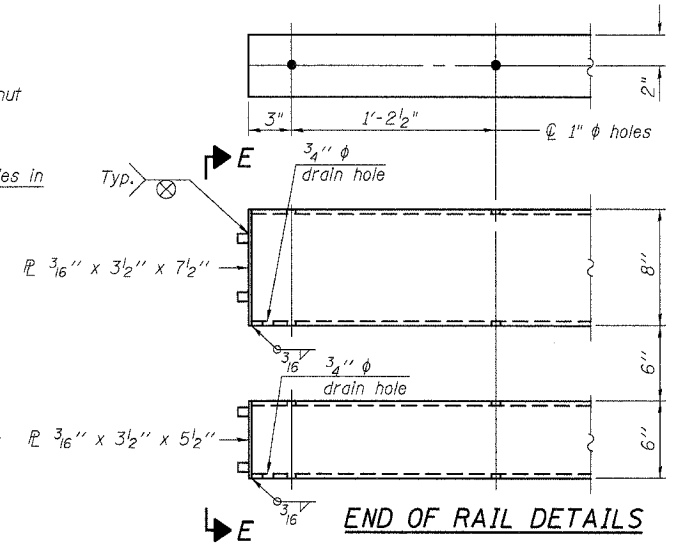
**VIEW D-D**



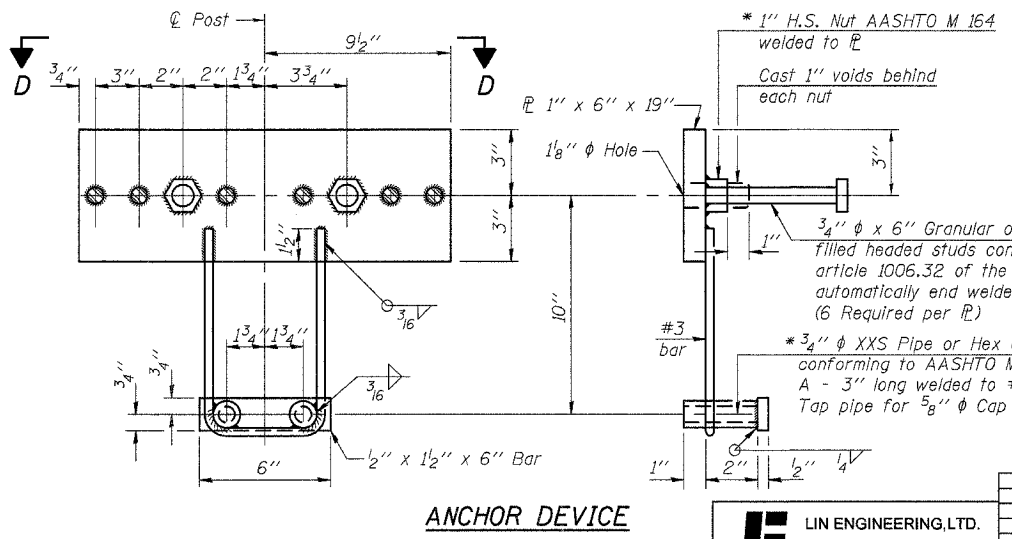
**SECTION AT RAIL SPLICE**



**VIEW E-E**



**END OF RAIL DETAILS**



**ANCHOR DEVICE**

Notes:  
 All field drilled holes shall be coated with an approved zinc rich paint before erection.  
 For multi-span bridges, sufficient 1/4" x 6" x 1'-2" galvanized steel shims shall be provided to align rail between adjacent spans. Cost included with Steel Bridge Rail, Type SM.  
 Steel rail elements shall be galvanized according to Article 509.05 of the Standard Specifications.  
 \*\* The studs of the anchor devices shall be placed below the top reinforcement bars and the outermost longitudinal reinforcement bar shall be placed directly above the studs of the rail post anchor device.  
 See Sheet 7 of 12 for rail post spacing.  
 See Sheet 2 of 12 for connection to Precast Approach Units.

**BILL OF MATERIAL**

Item	Unit	Quantity
Steel Railing, Type SM	Foot	185

ILLINOIS DEPARTMENT OF TRANSPORTATION  
**STEEL RAILING, TYPE SM**  
 U.S. ROUTE 45 OVER  
 CAVE CREEK  
 F.A.S. ROUTE 960 - SECTION 38 B-1  
 JOHNSON COUNTY  
 STA. 213+64.78  
 STRUCTURE NO. 044-0010

**REVISIONS**

NAME	DATE

**LIN ENGINEERING, LTD.**  
 Consulting Engineers  
 Chatham, Illinois

Designed By: DLS    Checked By: MTH    Drawn By: AJF  
 Date: 03/2007    File: 044-0010.DWG

B:\16\2007 2:50:34 PM ...N044-0010.dgn