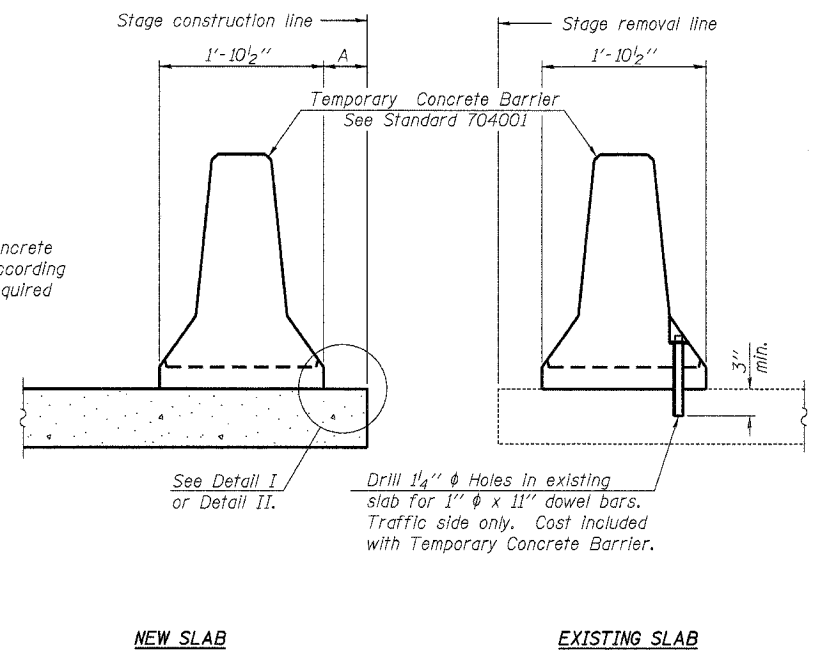
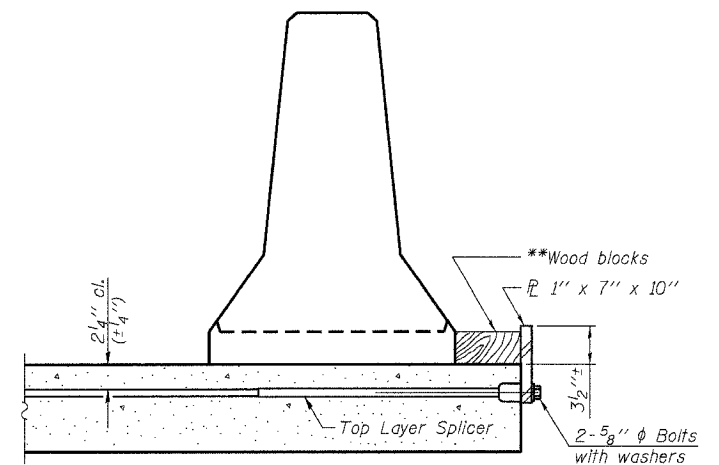


Contract # 98890

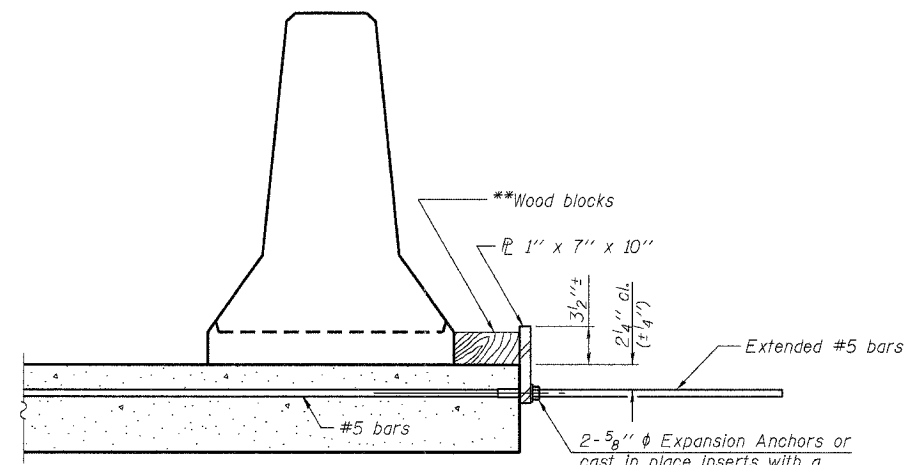


When "A" is 3'-6" or less, the temporary concrete barrier shall be anchored to the new slab according to Detail I or Detail II. No anchorage is required when "A" is greater than 3'-6".

**SECTIONS THRU SLAB**



**DETAIL I**



**DETAIL II**

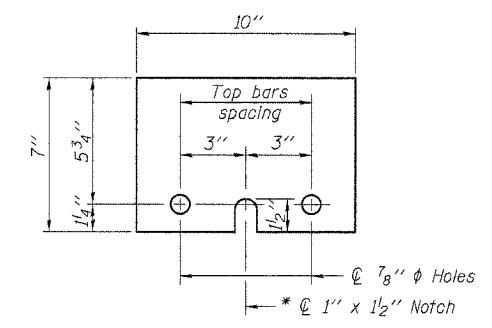
\*\* Wood blocks may be omitted when required to provide minimum stage traffic lane width. When the wood blocks are omitted, the concrete barrier shall be in direct contact with the steel retainer plate.

**NOTES**

**Detail I - With Bar Splicer or Couplers:**  
Connect one (1) 1"x7"x10" steel PL to the top layer of couplers with 2-5/8" phi bolts screwed to coupler at approximate C of each barrier panel.

**Detail II - With Extended Reinforcement Bars:**  
Connect one (1) 1"x7"x10" steel PL to the concrete slab with 2-5/8" phi Expansion Anchors or cast in place inserts spaced between the top layer of reinforcement at approximate C of each barrier panel.

Cost of anchorage is included with Temporary Concrete Barrier. The 1" x 7" x 10" plate shall not be removed until stage II construction forms and all reinforcement bars are in place and the concrete is ready to be placed.



**STEEL RETAINER PL 1" x 7" x 10"**  
\* Required only with Detail II

ILLINOIS DEPARTMENT OF TRANSPORTATION  
**TEMPORARY CONCRETE BARRIER**  
 U.S. ROUTE 45 OVER  
 CAVE CREEK  
 F.A.S. ROUTE 960 - SECTION 38 B-1  
 JOHNSON COUNTY  
 STA. 213+64.78  
 STRUCTURE NO. 044-0010

**LIN ENGINEERING, LTD.**  
 Consulting Engineers  
 Chatham, Illinois

Designed By: GLS  
 Date: 03/2007

Checked By: MTH  
 File: 044-0010.DWG

Drawn By: AWF

REVISIONS	
NAME	DATE

8/16/2007 2:53:36 PM ...N044-0010.dgn