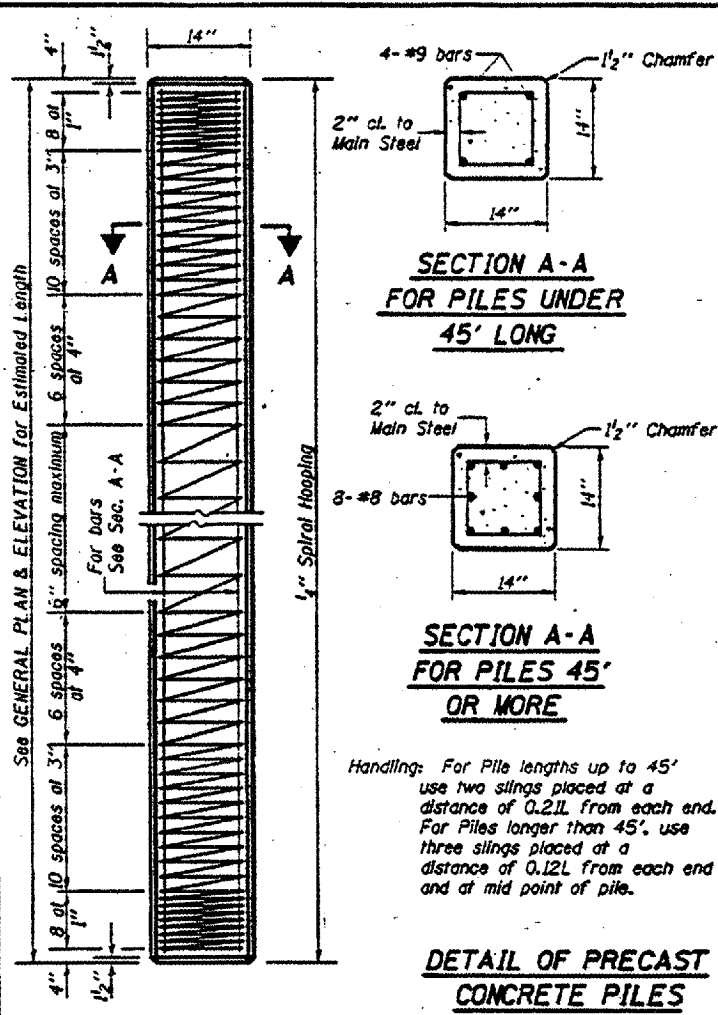
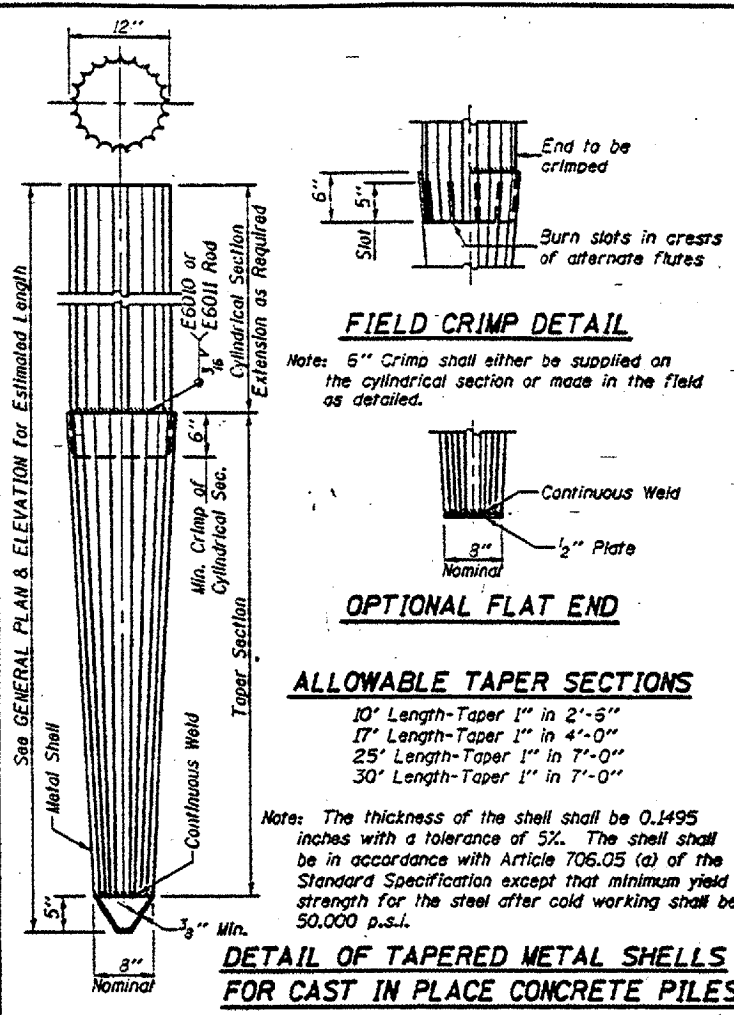


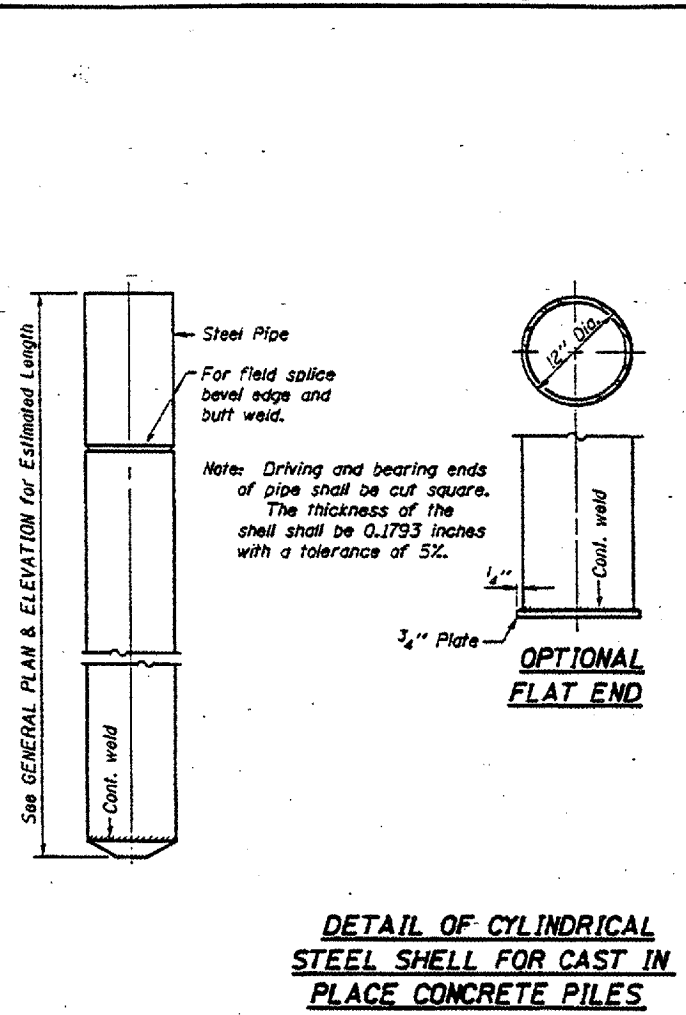
ROUTE	SECTION	COUNTY	TOTAL SHEETS	SHEET NO.
TR 222	02-06116-00-BR	PERRY	10	9
PROJECT NO. BROS-148(32)			CONTRACT NO. 99212	



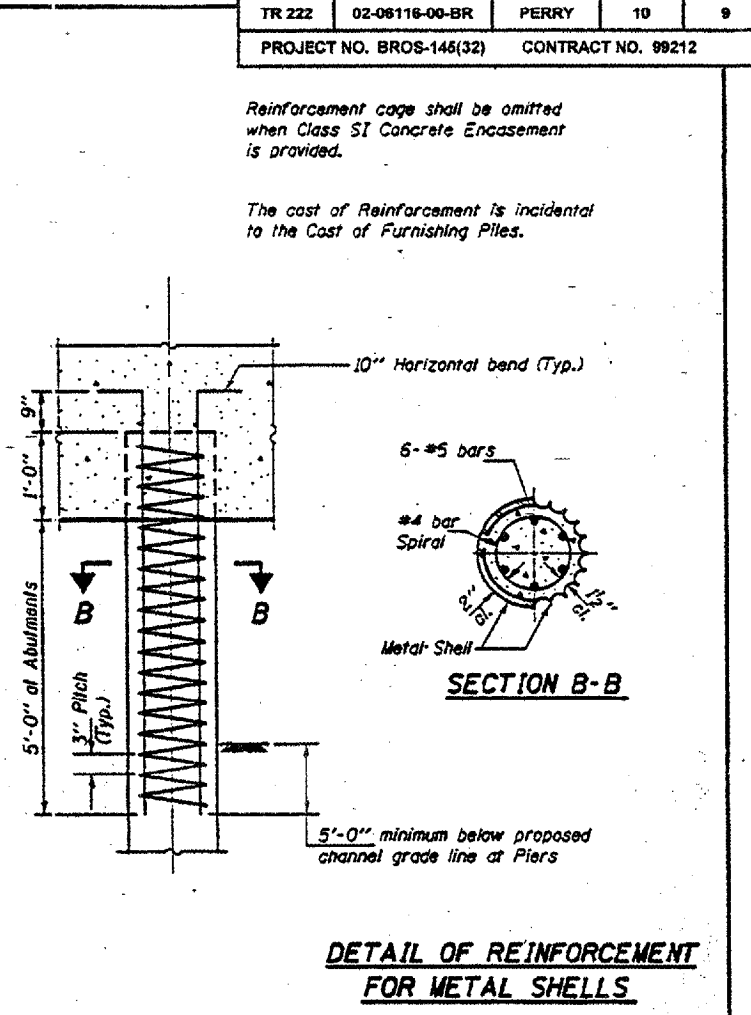
DETAIL OF PRECAST CONCRETE PILES



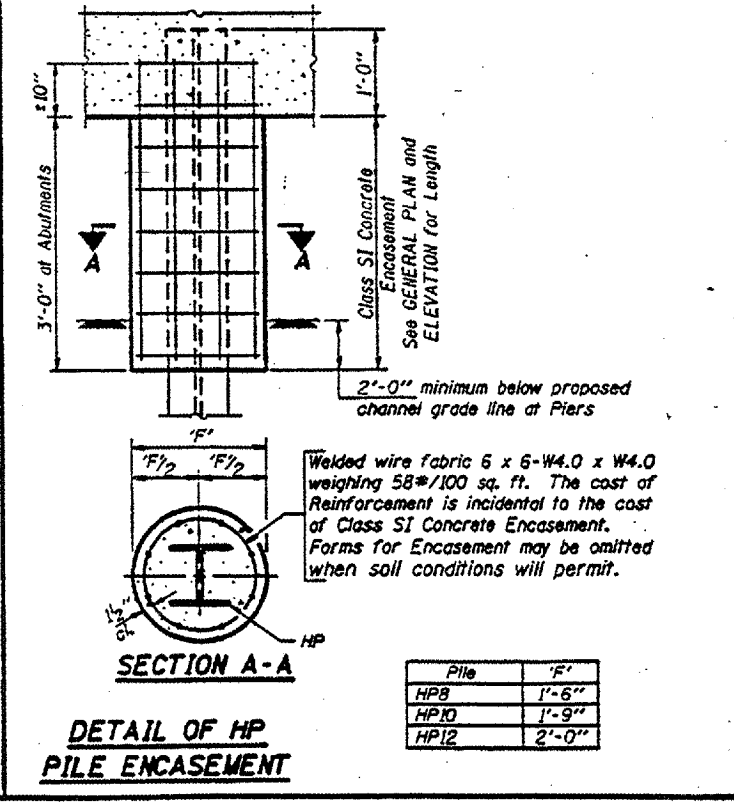
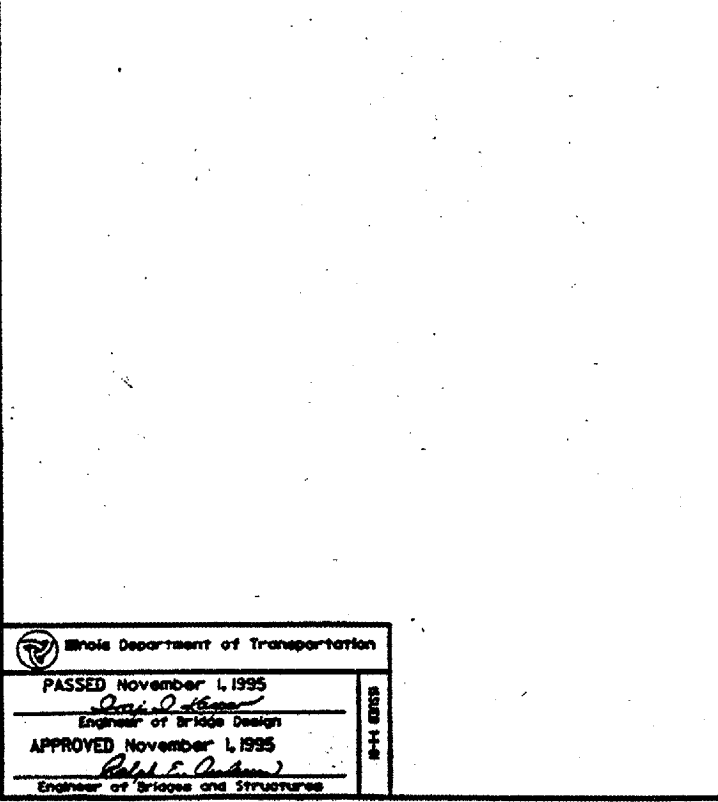
DETAIL OF TAPERED METAL SHELLS FOR CAST IN PLACE CONCRETE PILES



DETAIL OF CYLINDRICAL STEEL SHELL FOR CAST IN PLACE CONCRETE PILES



DETAIL OF REINFORCEMENT FOR METAL SHELLS



QUANTITIES/LIN. FT. OF ENCASEMENT (STEEL PILES)

Pile Size	Item	Quantity
HP8	Class SI Concrete Encasement	0.063 C.Y.
HP10	Class SI Concrete Encasement	0.086 C.Y.
HP12	Class SI Concrete Encasement	0.112 C.Y.

(METAL SHELL PILES)

Pile Size	Item	Quantity
12" Dia.	Class SI Concrete Encasement	0.097 C.Y.

Ohio Department of Transportation
 PASSED November 1, 1995
 APPROVED November 1, 1995
 Engineer of Bridge Design
 Engineer of Bridge and Structures

PILE DETAILS
STANDARD CX-1