

FOR INDEX OF SHEETS, SEE SHEET NO. 2

STATE OF ILLINOIS
DEPARTMENT OF TRANSPORTATION
DIVISION OF HIGHWAYS

PLANS FOR PROPOSED HIGHWAY

F.A.P. 350 ILLINOIS ROUTE 50 (CICERO AVENUE)
OVER NORTH BRANCH CHICAGO RIVER
STRUCTURE REMOVAL & REPLACEMENT AND ROADWAY RECONSTRUCTION
SECTION 57B-31
~~PROJECT NO.~~
COOK COUNTY
C-91-355-97

TRAFFIC DATA
EXISTING ADT 14,500 (1999)
PROJECTED ADT 24,000 (2020)

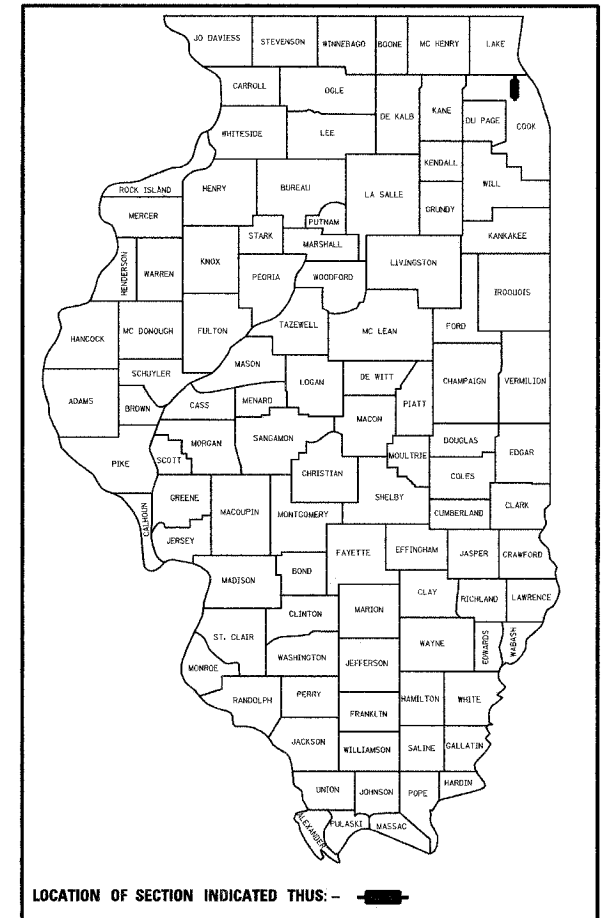
SPEED LIMIT (POSTED)
35 MPH IL 50 (CICERO AVENUE)

PROJECT IS LOCATED IN
THE CITY OF CHICAGO.

F.A.P. RTE.	SECTION	COUNTY	TOTAL SHEETS	SHEET NO.
350	57B-31	COOK	62	1
STA.		STA.		
FED. ROAD DIST. NO.		ILLINOIS FED. AID PROJECT		

CONTRACT NO. 60440

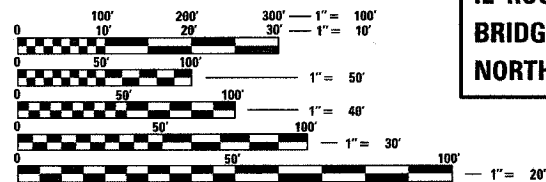
D-91-355-97



DOT DESIGN-CONSULTANT PROJECT MANAGER: RAJENDRA C. SHAH (847) 705-4555

PATRICK
ENGINEERING INC.
LISLE, ILLINOIS

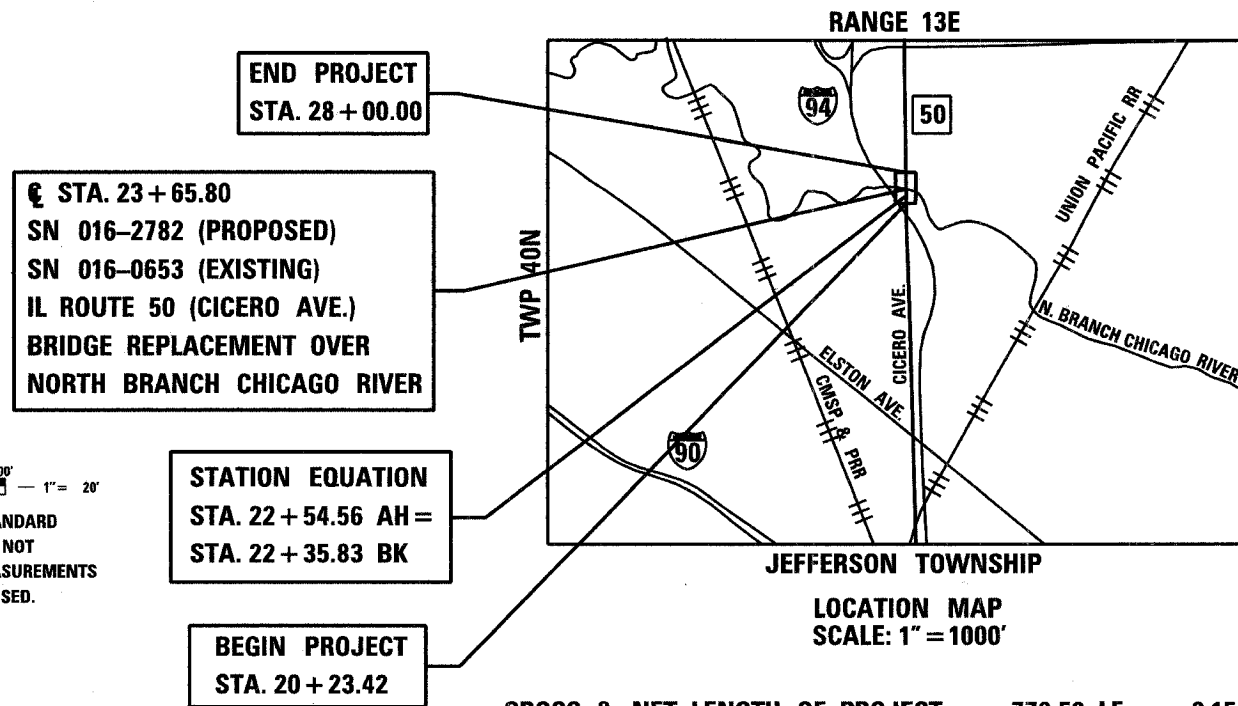
ENGLISH RATIOS



FULL SIZE PLANS HAVE BEEN PREPARED USING STANDARD ENGINEERING SCALES. REDUCED SIZED PLANS WILL NOT CONFORM TO STANDARD SCALES. IN MAKING MEASUREMENTS ON REDUCED PLANS, THE ABOVE SCALES MAY BE USED.

FOR UTILITY INFORMATION CONTACT
CHICAGO UTILITY ALERT NETWORK
312-744-7000

CONTRACT NO. 60440



STATE OF ILLINOIS
DEPARTMENT OF TRANSPORTATION
DIVISION OF HIGHWAYS

SUBMITTED Aug. 21 20 06
Diane O'Keefe / cd
DISTRICT ENGINEER

October 13, 2006
Mike Hine / PD
ENGINEER OF DESIGN AND ENVIRONMENT

October 13, 20 06
Milton R. See, P.E. / PD
DIRECTOR, DIVISION OF HIGHWAYS

PATRICK ENGINEERING, INC.
PAUL M. LOPEZ, P.E.
* 062-044095

Paul M. Lopez



DATE: 8-18-06

EXP 11-30-07

PRINTED BY THE AUTHORITY
OF THE STATE OF ILLINOIS