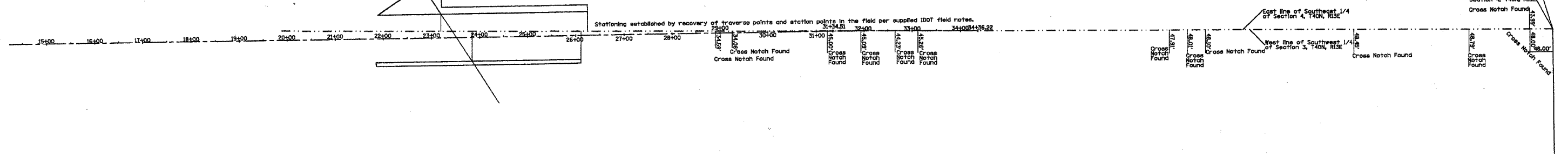


SECTIONS 3 & 4, TOWNSHIP 40 NORTH, RANGE 13 EAST OF THE THIRD PRINCIPAL MERIDIAN, IN COOK COUNTY, ILLINOIS

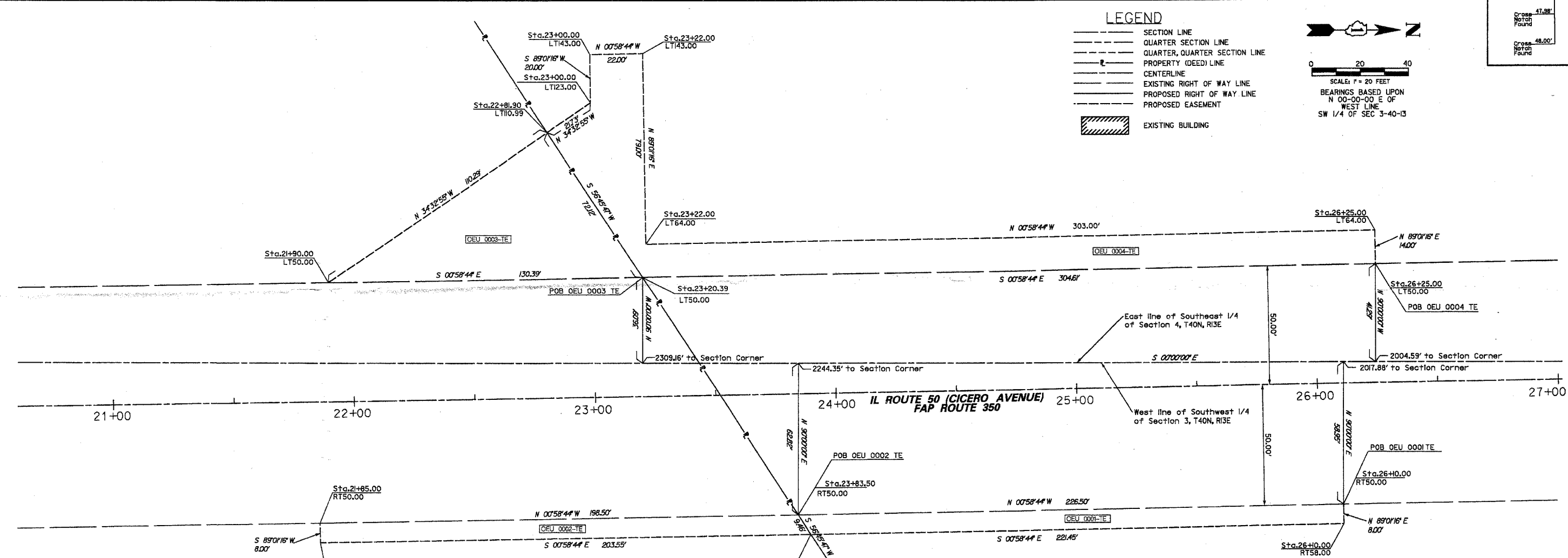
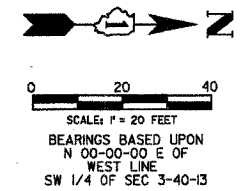
SECTION	COUNTY	TOTAL SHEETS	SHEET NO.
62	17		

DETAIL
SCALE: 1" = 100 FEET



LEGEND

- SECTION LINE
- QUARTER SECTION LINE
- QUARTER, QUARTER SECTION LINE
- PROPERTY (DEED) LINE
- CENTERLINE
- EXISTING RIGHT OF WAY LINE
- PROPOSED RIGHT OF WAY LINE
- PROPOSED EASEMENT
- ▨ EXISTING BUILDING



STATE OF ILLINOIS)
) S.S.
COUNTY OF COOK)

THIS IS TO CERTIFY THAT MACKIE CONSULTANTS, INC., AN ILLINOIS PROFESSIONAL LAND SURVEYING FIRM NO. 184-001162, HAS SURVEYED THE PLAT OF HIGHWAYS SHOWN HEREON BETWEEN SECTION 3, TOWNSHIP 40 NORTH, RANGE 13 AND SECTION 4, TOWNSHIP 40 NORTH, RANGE 13 EAST OF THE THIRD PRINCIPAL MERIDIAN, COOK COUNTY, THAT THE SURVEY IS TRUE AND COMPLETE AS SHOWN TO THE BEST OF MY KNOWLEDGE AND BELIEF; THAT THE PLAT CORRECTLY REPRESENTS SAID SURVEY. MADE FOR THE DEPARTMENT OF TRANSPORTATION, STATE OF ILLINOIS.

GIVEN UNDER MY HAND AND SEAL THIS 21st DAY OF DECEMBER, 2001 IN ROSEMONT, ILLINOIS.

MACKIE CONSULTANTS, INC.
ILLINOIS PROFESSIONAL LAND SURVEYING FIRM NO. 184-001162

Brian C. Plautz
BRIAN C. PLAUTZ
ILLINOIS PROFESSIONAL LAND SURVEYOR LICENSE NO. 003167
LICENSE EXPIRES: NOVEMBER 30, 2002

PARCEL NUMBER	OWNER	TOTAL HOLDING ACRES	PART TAKEN ACRES	REMAINDER ACRES	PREV. DED. ACRES	EASEMENT ACRES	EASEMENT PURPOSE	PERMANENT TAX INDEX NUMBER	PROPERTY ACQUIRED BY
OEU 0001-TE	COOK COUNTY FOREST PRESERVE	N/A	N/A	N/A	N/A	0.0411	CONSTRUCTION	13-03-316-005	N/A
OEU 0002-TE					N/A	0.0369	CONSTRUCTION	13-03-316-014	N/A
OEU 0003-TE					N/A	0.0913	CONSTRUCTION	13-03-316-014	N/A
OEU 0004-TE					N/A	0.1453	CONSTRUCTION	13-04-414-002	N/A

MACKIE CONSULTANTS, INC.
9575 W. HIGGINS RD., SUITE 500, ROSEMONT, IL 60018
847-898-1400 ENGINEERS 847-898-1410 PLANNERS 847-898-1410 SURVEYORS
ILLINOIS PROFESSIONAL DESIGN FIRM LICENSE NUMBER 184-001162

ILLINOIS DEPT. OF TRANSPORTATION
PLAT OF HIGHWAYS
FAP 350 (IL 50)

COUNTY: COOK PROJECT#
JOB# R-90-044-01 SEC 3 & 4 T 40 N, R 13 E OF 3RD P.M.
DRAWN BY: BCP CHECKED BY: BCP
SCALE: 1" = 20' SHEET NO. 2 OF 2

BUREAU OF LAND ACQUISITION
201 WEST CENTER COURT
SCHAUMBURG, ILLINOIS 60196-1096