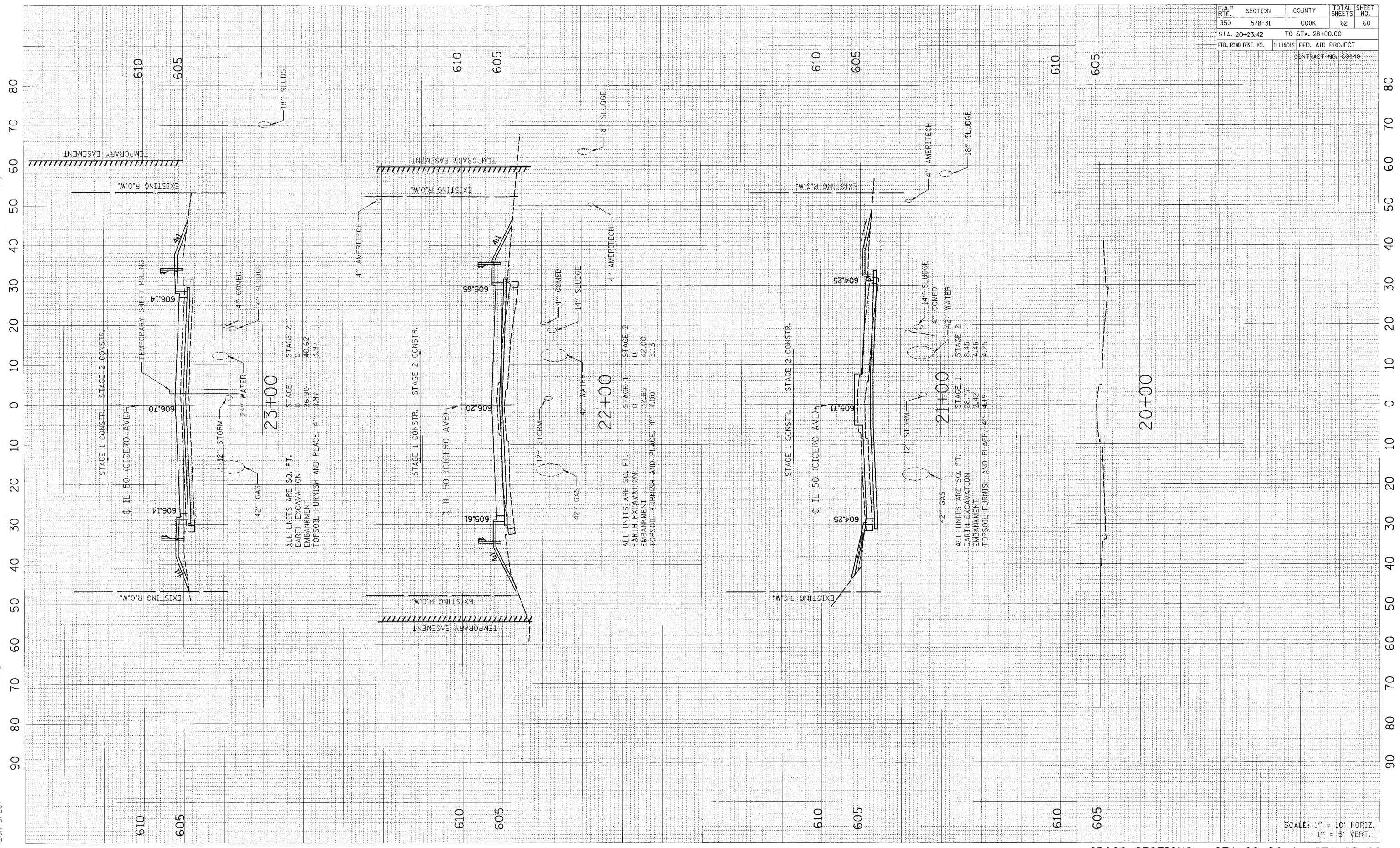


\*DATE - TIME\*  
\*DGN-SPEC\*

F.A.P. RTE.	SECTION	COUNTY	TOTAL SHEETS	SHEET NO.
350	57B-3I	COOK	62	60
STA. 20+23.42		TO STA. 28+00.00		
FED. ROAD DIST. NO.	ILLINOIS	FED. AID PROJECT		
CONTRACT NO. 60449				



CROSS SECTIONS - STA 20+00 to STA 23+00

SCALE: 1" = 10' HORIZ.  
1" = 5' VERT.