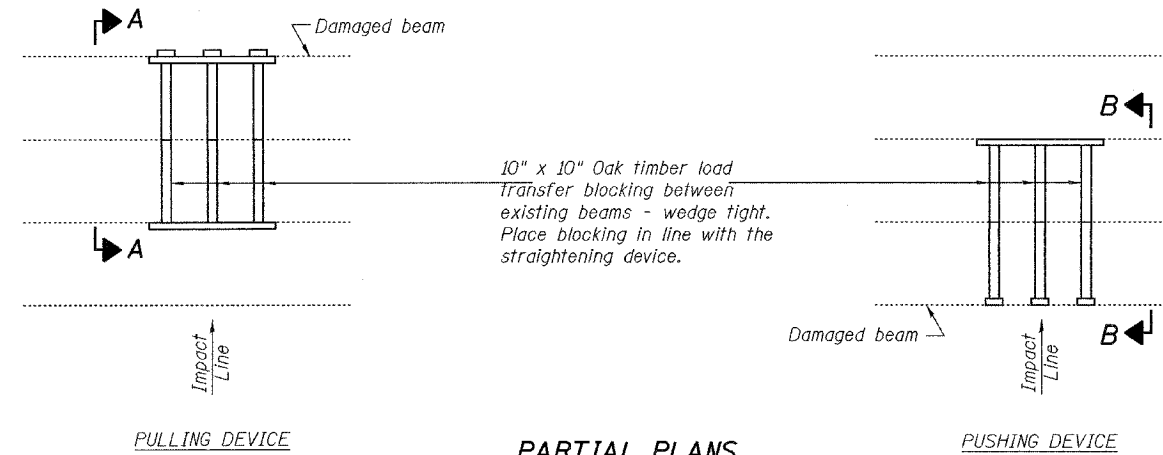


STATE OF ILLINOIS  
DEPARTMENT OF TRANSPORTATION

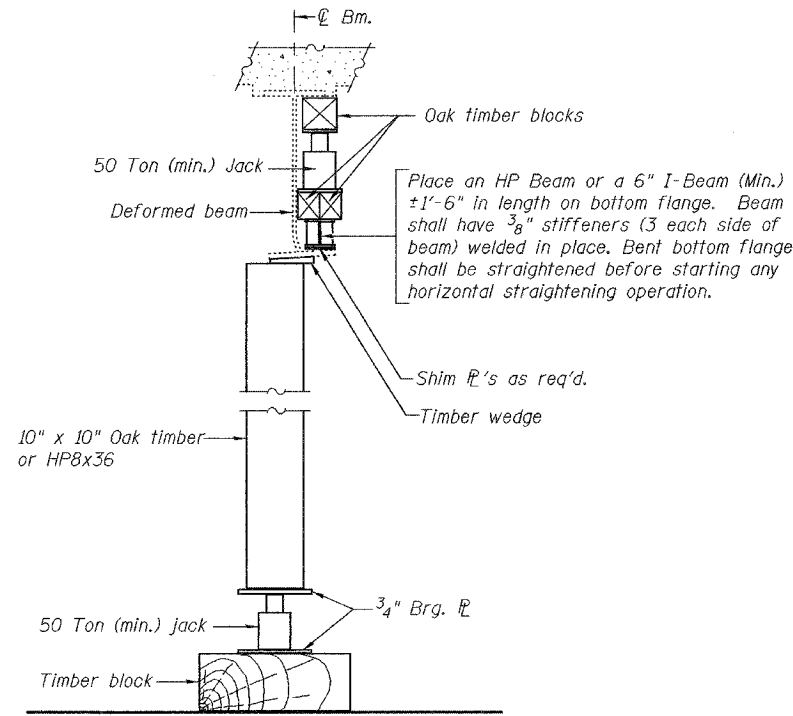
ROUTE NO.	SECTION	COUNTY	SHEET NO.	SHEET NO.
		Cook	13	6
FED. ROAD DIST. NO. 7		ILLINOIS	FED. AID PROJECT-	

Contract Number: 60B16

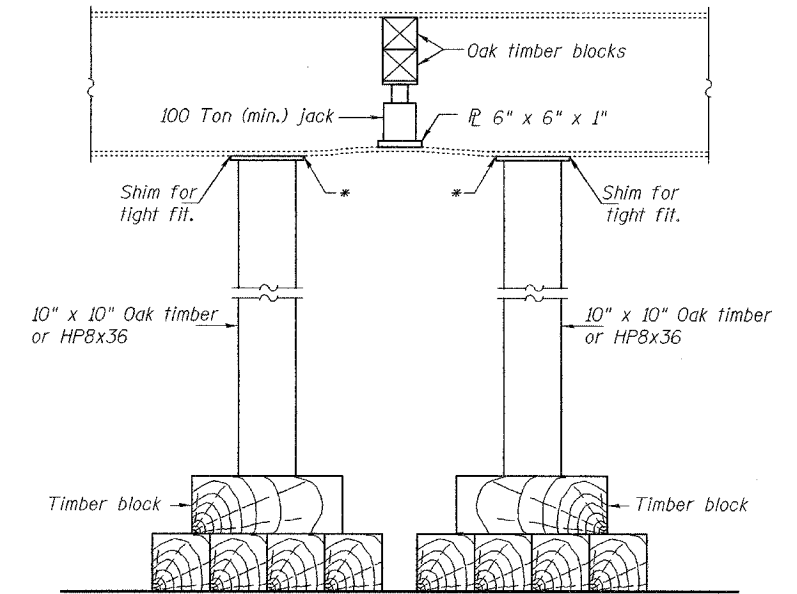


**PARTIAL PLANS  
SUGGESTED BEAM STRAIGHTENING METHODS**

Straightening force shall be maintained on all load transfer blocking during beam straightening.



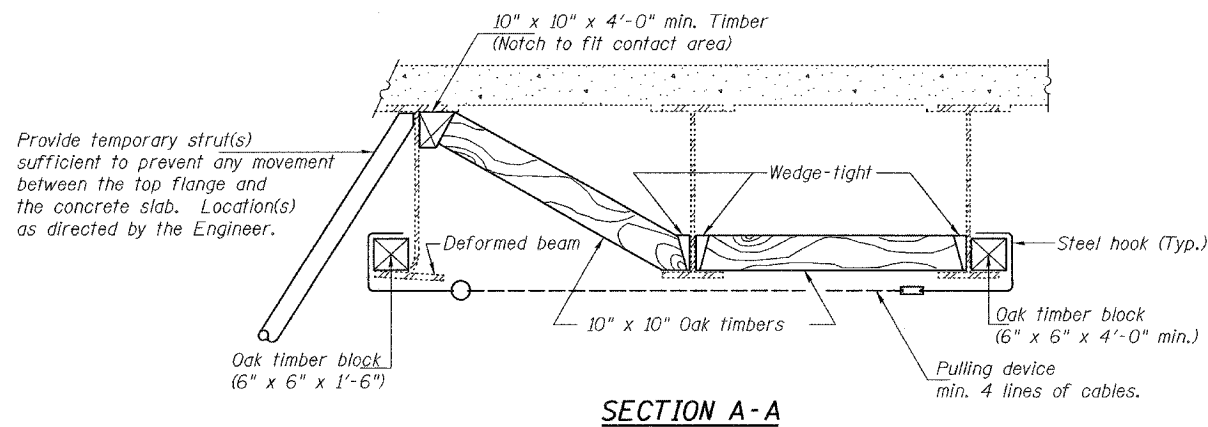
**SUGGESTED VERTICAL STRAIGHTENING DETAIL  
(To correct flange rotation.)**



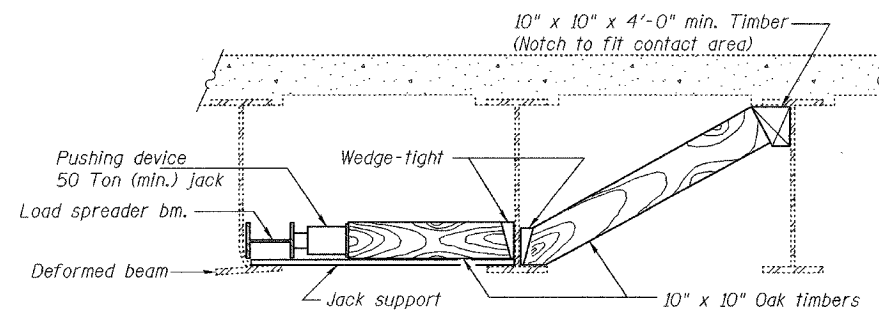
**SUGGESTED VERTICAL STRAIGHTENING DETAIL  
(To correct localized vertical flange deformations.)**

\* Edge of plate shall line up with edge of deformation.

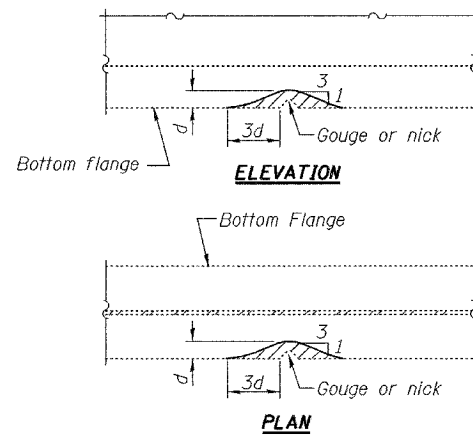
Note:  
Braces and jack assembly shall be placed on same side of web.  
Bent bottom flange shall be straightened before starting any horizontal straightening operations.



**SECTION A-A**

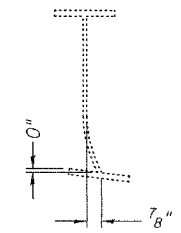


**SECTION B-B**



**GRINDING DETAIL**

Grind existing nicks, gouges and shallow cracks in the damaged beams as detailed. Ground surfaces shall be inspected for cracks using magnetic particle testing prior to initiating any beam straightening operations. Any cracks that cannot be removed by grinding approximately 1/4" deep shall be identified and reported to the Bureau of Bridges and Structures for further disposition. Ground surfaces shall be spot cleaned and painted with an aluminum epoxy mastic primer followed by a finish coat to match the color of the existing beam. Cost of grinding, testing and spot painting included with Beam Straightening.



**EXISTING DEFORMATION  
TO BE STRAIGHTENED**

(Looking )  
(Approximate max. deflections)  
Deflected length of beam to be straightened is approximately 5'-0".

**BEAM STRAIGHTENING DETAILS  
GLENWOOD-LANSING RD / IL 394  
COOK COUNTY  
SN 016-0918**

DESIGNED	S.J.B.
CHECKED	P.S.J.
DRAWN	Drew Christopher
CHECKED	S.J.B. P.S.J.

EXAMINED	September 19, 2006
	John A. Morris ENGINEER OF STRUCTURAL SERVICES
PASSED	Ralph E. Anderson ENGINEER OF BRIDGES AND STRUCTURES

REP-11-14-2005  
SLT-91-001-06