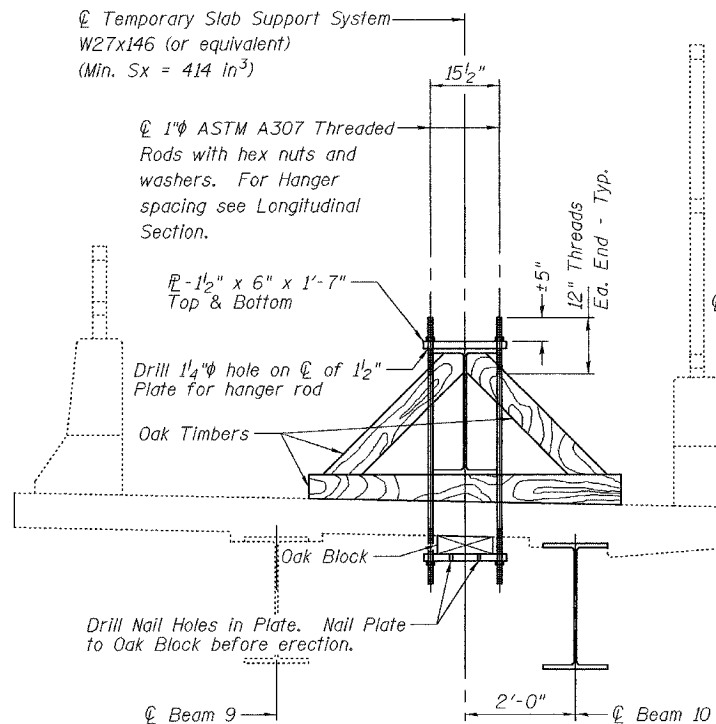


STATE OF ILLINOIS
DEPARTMENT OF TRANSPORTATION

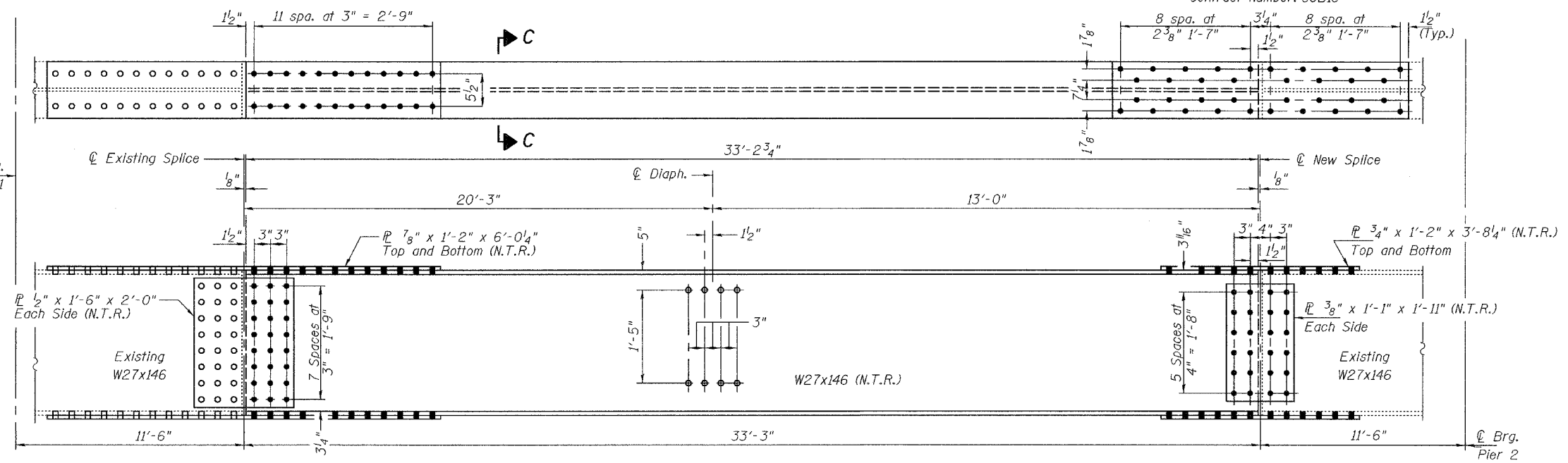
| | | | | |
|-----------------------|---------|----------|------------------|-----------|
| ROUTE NO. | SECTION | COUNTY | SHEET | SHEET NO. |
| | | Cook | 13 | 7 |
| FED. ROAD DIST. NO. 7 | | ILLINOIS | FED. AID PROJECT | |

Contract Number: 60B16

8 SHEETS



SECTION A-A

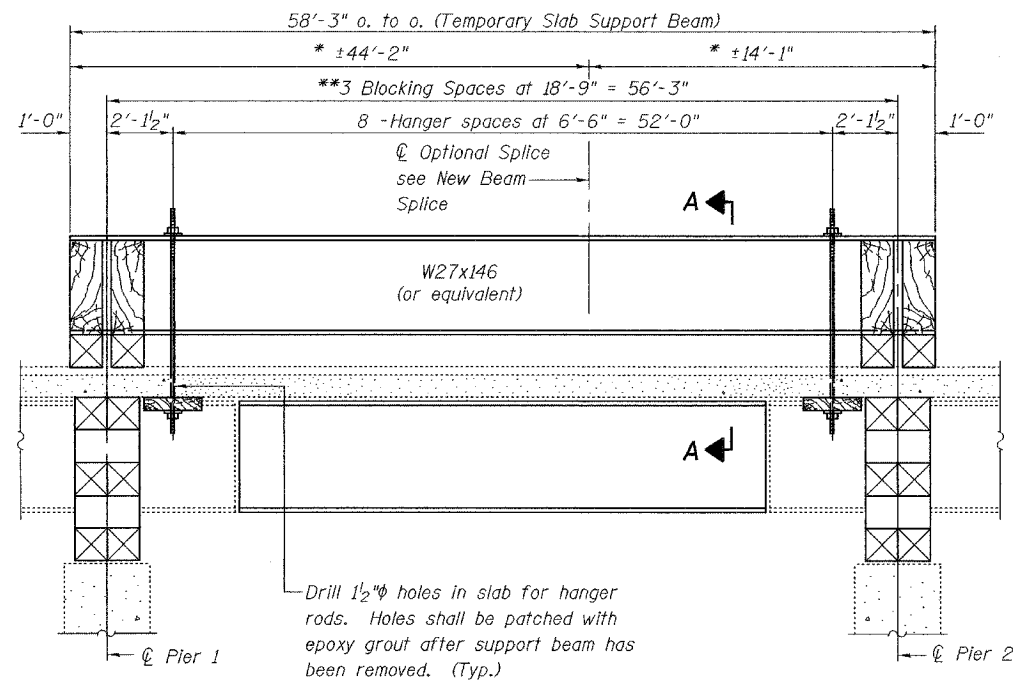


ELEVATION BEAM 10

(N.T.R. = Notch Toughness Required)
Web splice holes at new splice shall be 5/16 inch phi for 7/8 inch phi bolts.

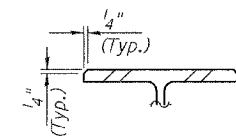
- = Shop Drill
- = Field Drill

* These dimensions may vary for available beams in stock.

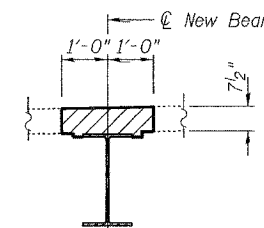


LONGITUDINAL SECTION
SUGGESTED TEMPORARY SLAB SUPPORT SYSTEM

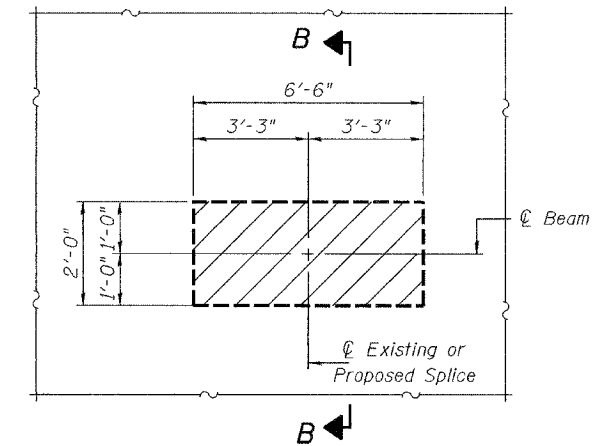
**Wood blocking between piers to be placed after support beam deflects under its own weight.



SECTION C-C



SECTION B-B



TYPICAL CONCRETE REMOVAL
AND REPLACEMENT

Hatched areas indicate concrete sections to be removed and replaced. Perimeters of concrete removal areas shall be saw cut 3/4 inch prior to the removal of concrete. Reinforcement shall be cut only if required for fitting bolts. Cut reinforcement shall be spliced as directed by the Engineer. Cost shall be included with Concrete Removal.

| | |
|----------|------------------|
| DESIGNED | S.J.B. |
| CHECKED | P.S.J. |
| DRAWN | Drew Christopher |
| CHECKED | S.J.B. P.S.J. |

| | |
|----------|---|
| EXAMINED | September 19, 2006 |
| PASSED | John A. Morris ENGINEER OF STRUCTURAL SERVICES |
| | Ralph E. Anderson ENGINEER OF BRIDGES AND STRUCTURES |

BEAM REPLACEMENT DETAILS
GLENWOOD-LANSING RD / IL 394
COOK COUNTY
SN 016-0918