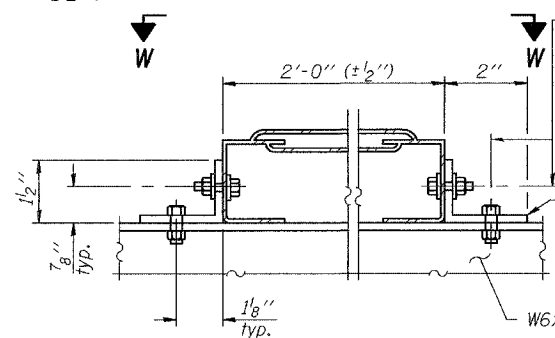
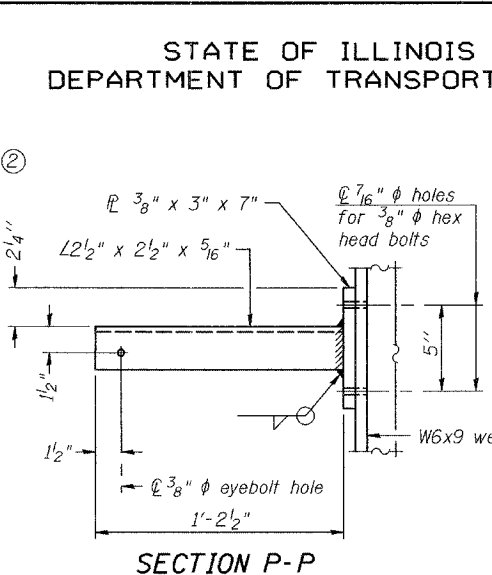
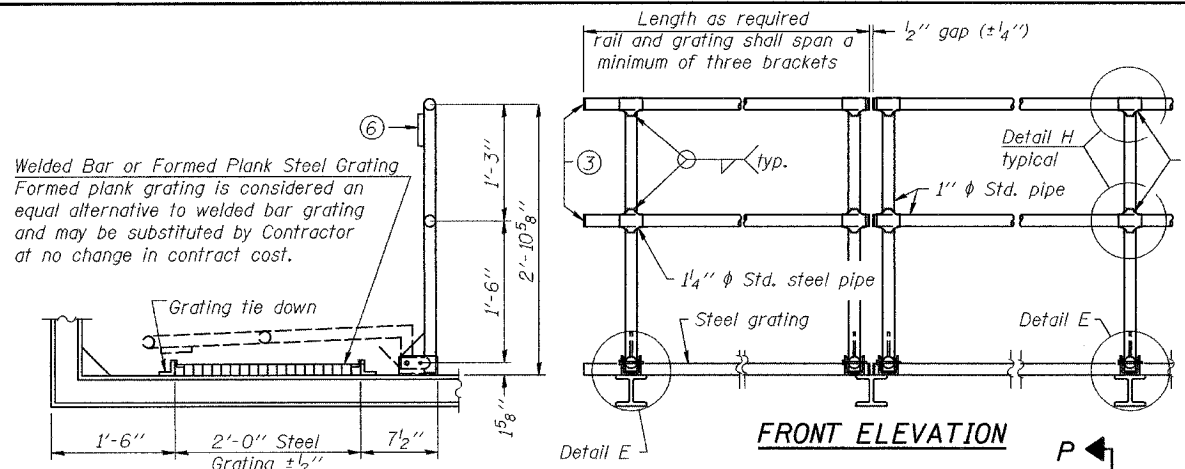


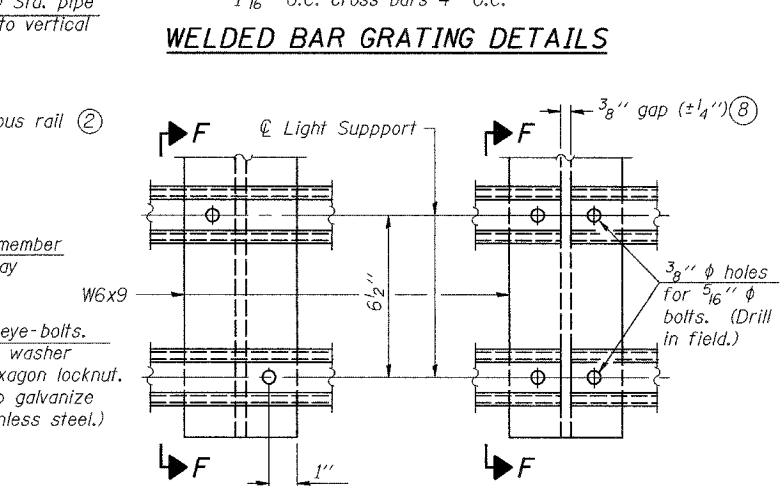
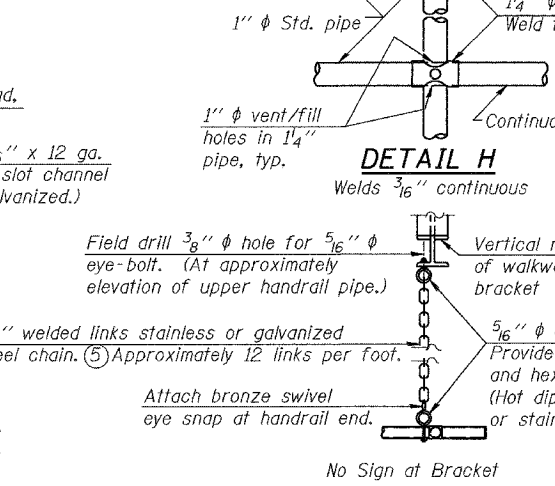
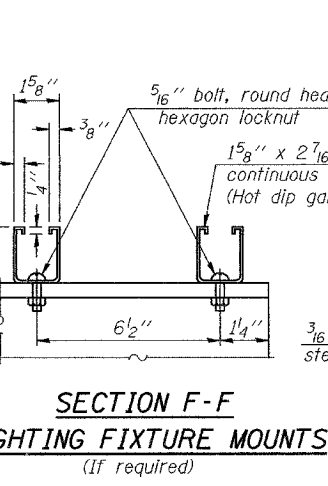
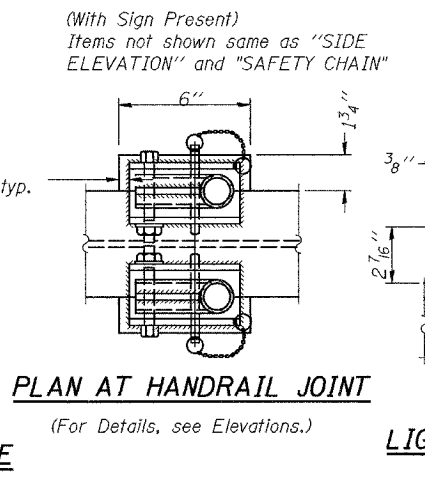
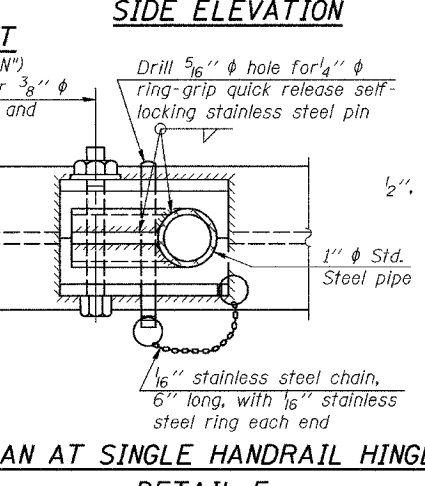
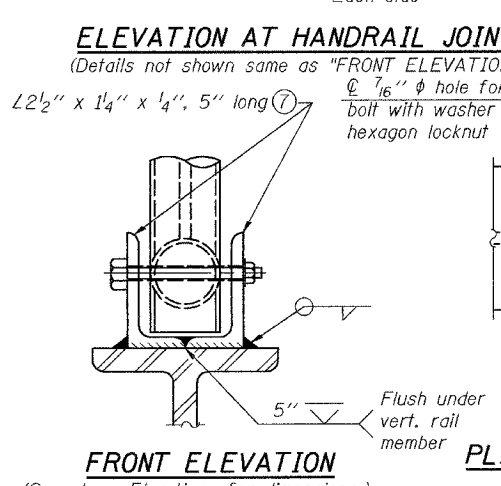
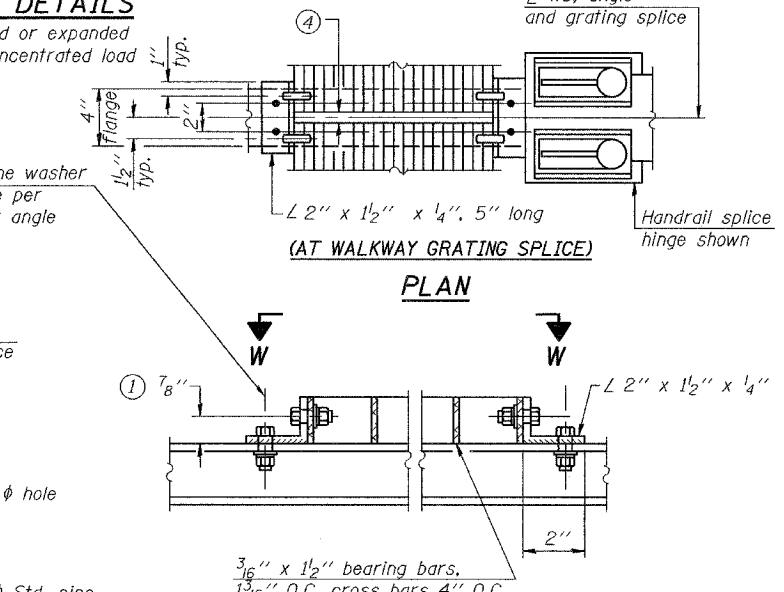
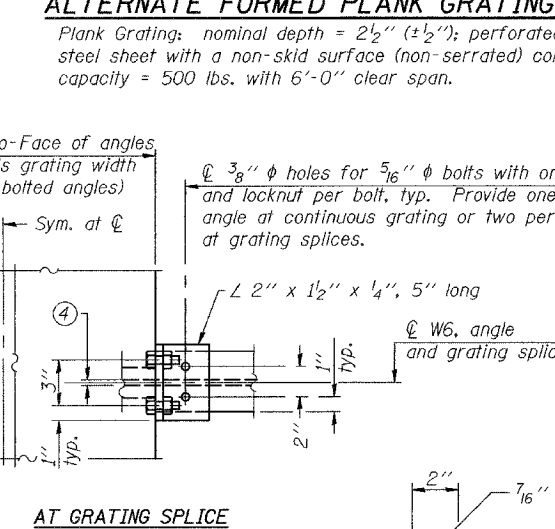
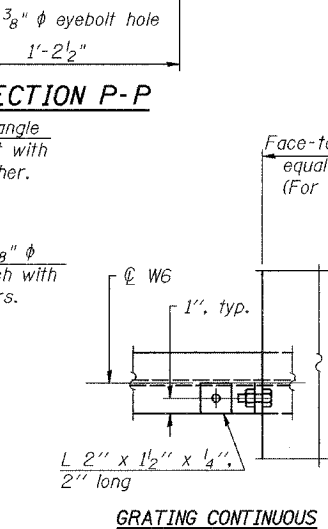
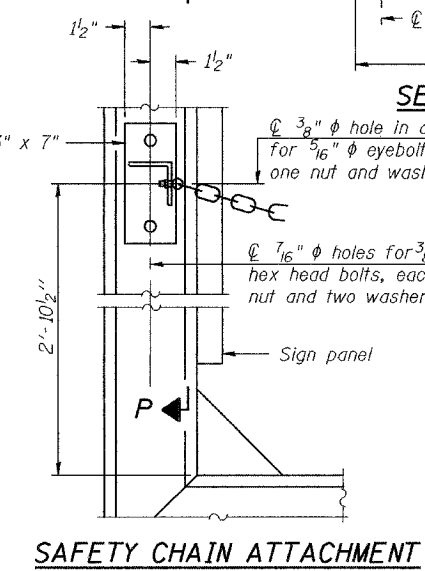
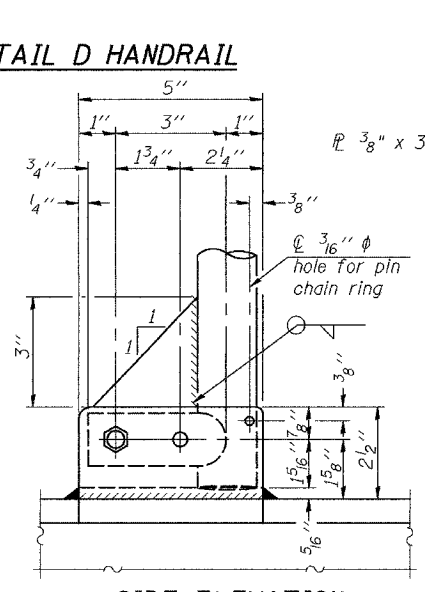
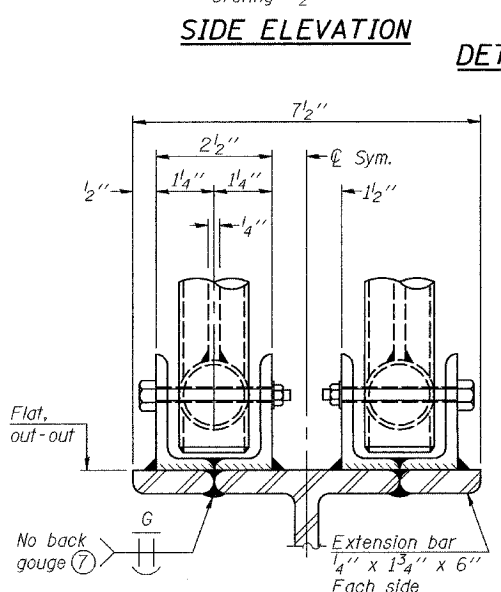
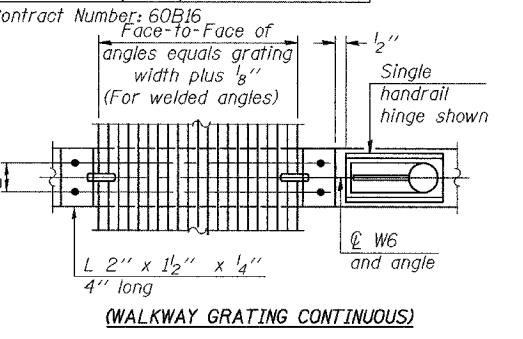
STATE OF ILLINOIS
DEPARTMENT OF TRANSPORTATION

ROUTE NO.	SECTION	COUNTY	SHEETS	SHEET NO.
		Cook	13	11
FED. ROAD DIST. NO. 7		ILLINOIS	FED. AID PROJECT-	

8 SHEETS



Drill ① 3/8" φ holes in walkway and support for 5/16" φ bolts with flat washers under head and locknut. Provide one per angle for continuous grating and two per angle at grating splices.



NUMBER	REVISION	DATE

DESIGNED	S.J.B.	EXAMINED	September 19, 2006
CHECKED	P.S.J.	EXAMINED	John A. Morris
DRAWN	Drew Christopher	PASSED	Ralph E. Anderson
CHECKED	S.J.B. P.S.J.		

- NOTES**
- ① Drilling holes in grating may be done in shop or field, based on Contractor's preference and subject to accurate alignment. Field drilled holes must be touched up with galvanized paint.
 - ② Horizontal rail member shall be continuous thru 1 1/4" φ pipe. Provide 7/16" φ hole in fitting for 3/8" φ bolt. Field drill 7/16" φ hole in horizontal rail member. Provide washer and locknut for bolt. (Use 5/16" eyebolts in 7/16" φ holes on top rail at ends only.)
 - ③ Install standard force-fit end caps or weld 1/8" end plates with 1/8" c.f.w. and grind smooth. (All rail ends.)
 - ④ 3/8" (±1/4") gap between grating panels at splice.

- NOTES**
- ⑤ Chain to be hot dip galvanized after manufacture or stainless steel suitable for prolonged exterior exposure. Approximately 3'-6" long chain per location. Maximum sag with handrail erected = 4".
 - ⑥ 1/8" x 1/2" x 2" welded to handrail posts to protect locations that contact grating.
 - ⑦ Extrusions may be used in lieu of details shown, with approval by Engineer.
 - ⑧ Field cut ends of light support channels shall be free of burrs or hazardous projections and coated with zinc-rich primer or equivalent.

SIGN STRUCTURE DETAILS
GLENWOOD-
LANSING RD / IL 394
COOK COUNTY
SN 016-0918