

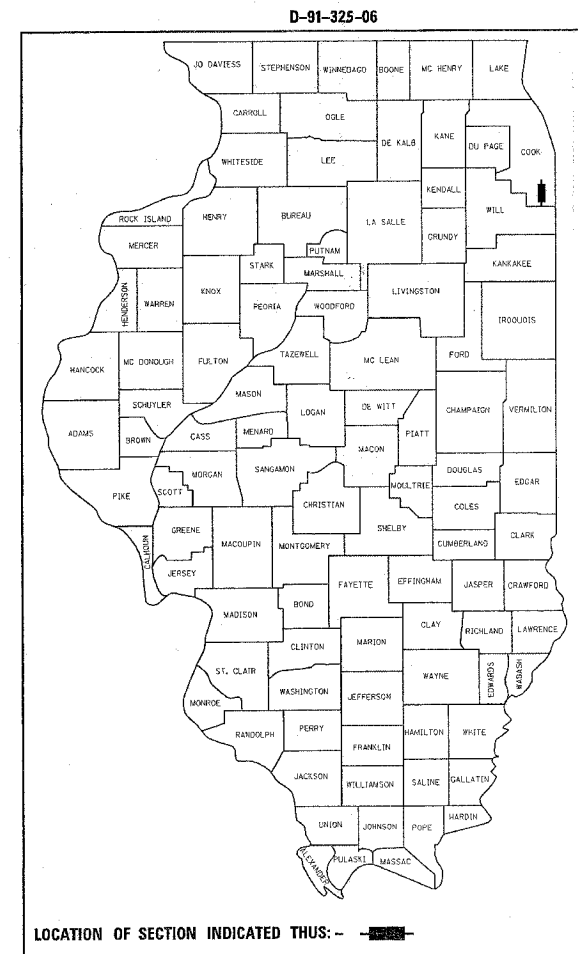
F.A. RTE.	SECTION	COUNTY	TOTAL SHEETS	SHEET NO.
3730	3268-Z-W-1-RS	COOK	19	1

STATE OF ILLINOIS  
DEPARTMENT OF TRANSPORTATION  
DIVISION OF HIGHWAYS

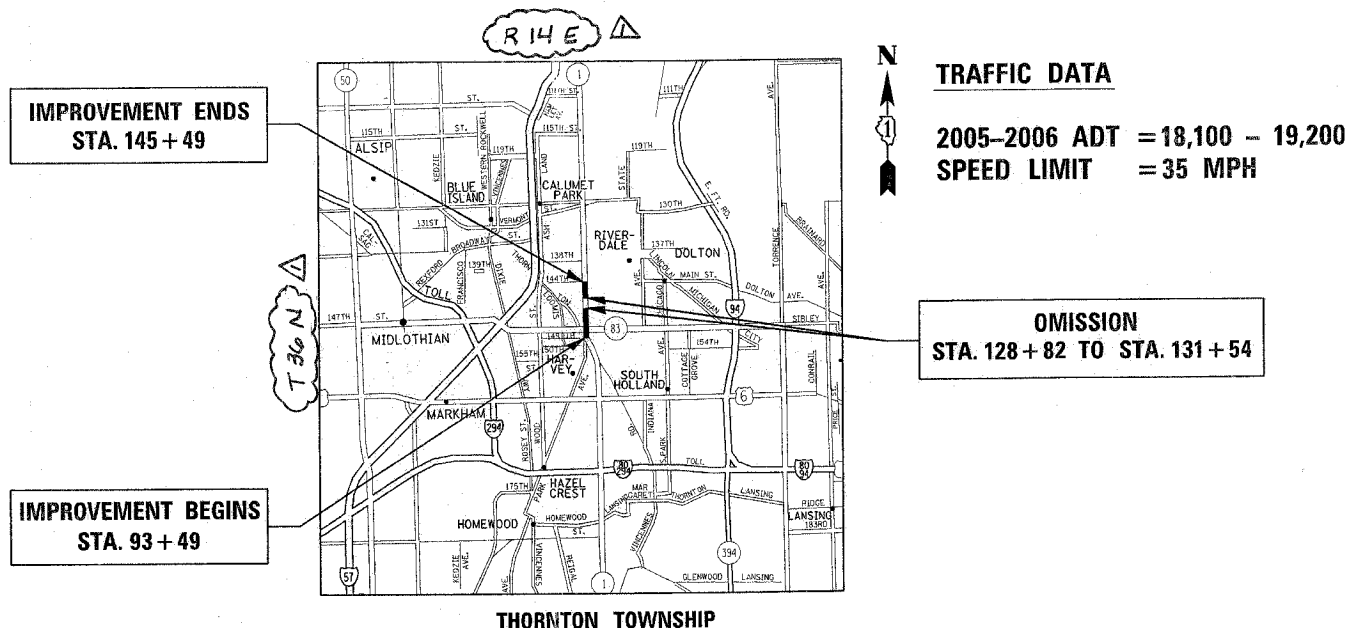
**PROPOSED  
HIGHWAY PLANS**

**FAU ROUTE 3730: ILL-1 (HALSTED STREET)  
FROM 144th STREET TO 149th STREET  
SECTION 3268-Z-W-1-RS  
PATCHING AND RESURFACING  
COOK COUNTY  
C-91-325-06**

FOR INDEX OF SHEETS, SEE SHEET NO. 2



IMPROVEMENT LOCATED IN THE CITY OF HARVEY



STATE OF ILLINOIS  
DEPARTMENT OF TRANSPORTATION  
DIVISION OF HIGHWAYS

SUBMITTED 8/30 20 06

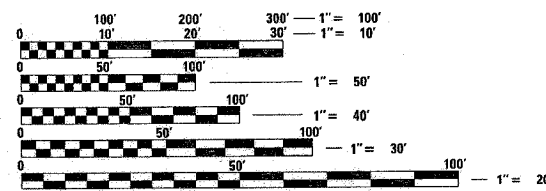
*Donna O'Keefe*  
DEPUTY DIRECTOR OF HIGHWAYS, REGION ENGINEER

October 13, 20 06  
*Mike Hines*  
ENGINEER OF DESIGN AND ENVIRONMENT

October 13, 20 06  
*Milton R. Sues P.E.*  
DIRECTOR OF HIGHWAYS, CHIEF ENGINEER

**PRINTED BY THE AUTHORITY  
OF THE STATE OF ILLINOIS**

DISTRICT ONE - DESIGN - PLAN PREPARATION ENGINEER: KEN ENG / ROBERT BORO (847) 705-4178



FULL SIZE PLANS HAVE BEEN PREPARED USING STANDARD ENGINEERING SCALES. REDUCED SIZED PLANS WILL NOT CONFORM TO STANDARD SCALES. IN MAKING MEASUREMENTS ON REDUCED PLANS, THE ABOVE SCALES MAY BE USED.

J.U.L.I.E.  
JOINT UTILITY LOCATION INFORMATION FOR EXCAVATION  
1-800-892-0123

SUMMARY OF QUANTITIES			TOTAL QUANTITIES		CONSTRUCTION TYPE CODE				
CODE NO	ITEM	UNIT	TOTAL QUANTITIES	100% STATE 1000					
40600200	BITUMINOUS MATERIALS (PRIME COAT)	TON	10.8	10.8					
40600300	AGGREGATE (PRIME COAT)	TON	54	54					
40600400	MIXTURE FOR CRACKS, JOINTS, AND FLANGWAYS	TON	3	3					
40600895	CONSTRUCTING TEST STRIP	EACH	1	1					
40600980	BITUMINOUS SURFACE REMOVAL - BUTT JOINT	SQ YD	112	112					
40601000	BITUMINOUS REPLACEMENT OVER PATCHES	TON	57	57					
44000103	BITUMINOUS REMOVAL OVER PATCHES 3/4"	SQ YD	1351.5	1351.5					
44201753	CLASS D PATCHES, TYPE II, 9 INCH	SQ YD	541	541					
44201757	CLASS D PATCHES, TYPE III, 9 INCH	SQ YD	406	406					
44201759	CLASS D PATCHES, TYPE IV, 9 INCH	SQ YD	406	406					
<del>60603800</del>	<del>COMBINATION CONCRETE CURB &amp; GUTTER, TYPE B-16-12</del>	<del>FOOT</del>	<del>1000</del>	<del>1000</del>					
67000400	ENGINEER'S FIELD OFFICE, (TYPE A)	CAL MO	3	3					
67100100	MOBILIZATION	L SUM	1	1					
70102625	TRAFFIC CONTROL AND PROTECTION, STANDARD 701606	L SUM	1	1					
70102635	TRAFFIC CONTROL AND PROTECTION, STANDARD 701701	L SUM	1	1					
70300100	SHORT-TERM PAVEMENT MARKING	FOOT	33804	33804					
70300210	TEMPORARY PAVEMENT MARKING - LETTERS AND SYMBOLS	SQ FT	92	92					
70300220	TEMPORARY PAVEMENT MARKING - LINE 4"	FOOT	11268	11268					
70300240	TEMPORARY PAVEMENT MARKING - LINE 6"	FOOT	1446	1446					
70300260	TEMPORARY PAVEMENT MARKING - LINE 12"	FOOT	300	300					
70300280	TEMPORARY PAVEMENT MARKING - LINE 24"	FOOT	384	384					
* 78000100	THERMOPLASTIC PAVEMENT MARKING - LETTERS AND SYMBOLS	SQ FT	31	31					
* 78000200	THERMOPLASTIC PAVEMENT MARKING - LINE 4"	FOOT	11268	11268					
* 78000400	THERMOPLASTIC PAVEMENT MARKING - LINE 6"	FOOT	482	482					
* 78000600	THERMOPLASTIC PAVEMENT MARKING - LINE 12"	FOOT	100	100					

SUMMARY OF QUANTITIES			TOTAL QUANTITIES		CONSTRUCTION TYPE CODE				
CODE NO	ITEM	UNIT	TOTAL QUANTITIES	100% STATE 1000					
* 78000650	THERMOPLASTIC PAVEMENT MARKING - LINE 24"	FOOT	128	128					
* 78100100	RAISED REFLECTIVE PAVEMENT MARKER	EACH	720	720					
78300200	RAISED REFLECTIVE PAVEMENT MARKER REMOVAL	EACH	720	720					
* 88600600	DETECTOR LOOP REPLACEMENT	FOOT	598	598					
X4066426	BITUMINOUS CONCRETE SURFACE COURSE, SUPERPAVE, MIX "D", N70	TON	2271	2271					
X4067100	POLYMERIZED LEVELING BINDER (MACHINE METHOD), SUPERPAVE, IL-4.75, N50	TON	1115	1115					
X4409410	BITUMINOUS SURFACE REMOVAL 2 1/4"	SQ YD	27029	27029					
85000200	MAINTENANCE OF EXISTING TRAFFIC SIGNAL INSTALLATION	EACH	1	1					
* 87301305	ELECTRIC CABLE IN CONDUIT, LEAD-IN, NO. 14 1 PAIR	FOOT	397	397					
* 87900200	DRILL EXISTING HANDHOLE	EACH	2	2					
* 88500100	INDUCTIVE LOOP DETECTOR	EACH	2	2					
* 88600100	DETECTOR LOOP, TYPE 1	FOOT	132	132					
* 89502300	REMOVE ELECTRIC CABLE FROM CONDUIT	FOOT	355	355					

9/12/2006  
 60603800

\* SPECIALTY ITEMS

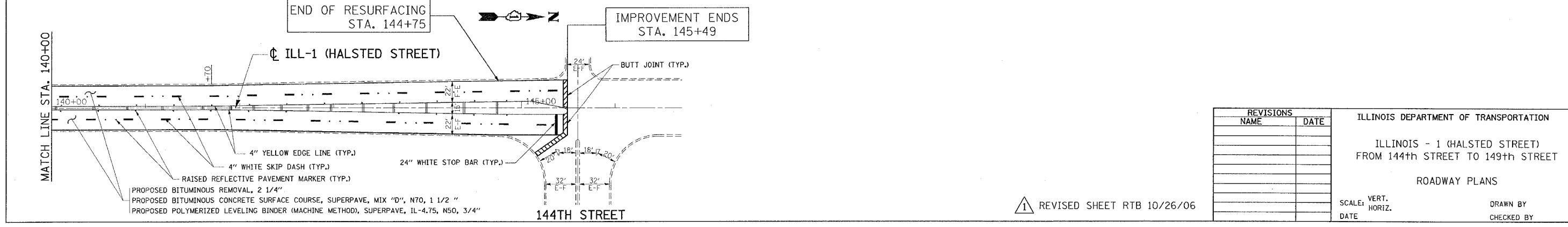
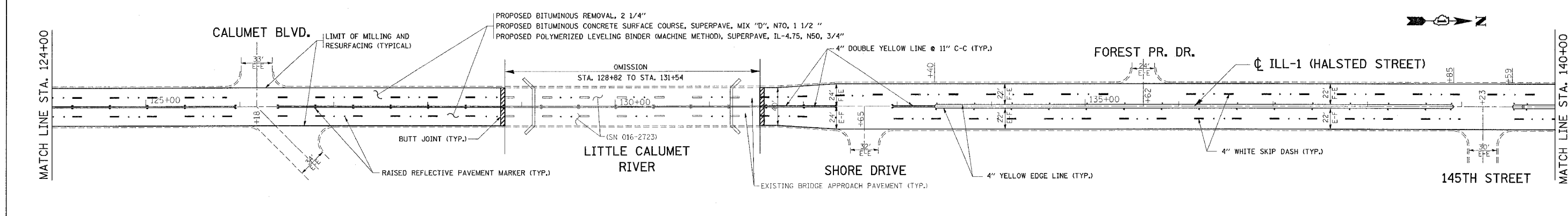
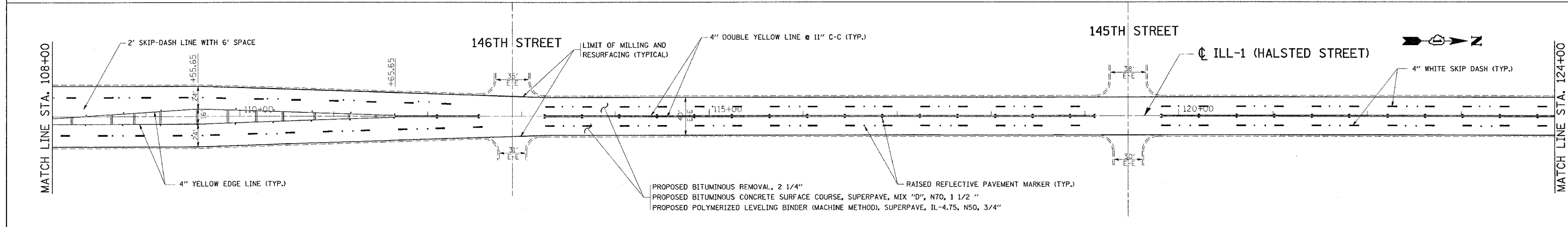
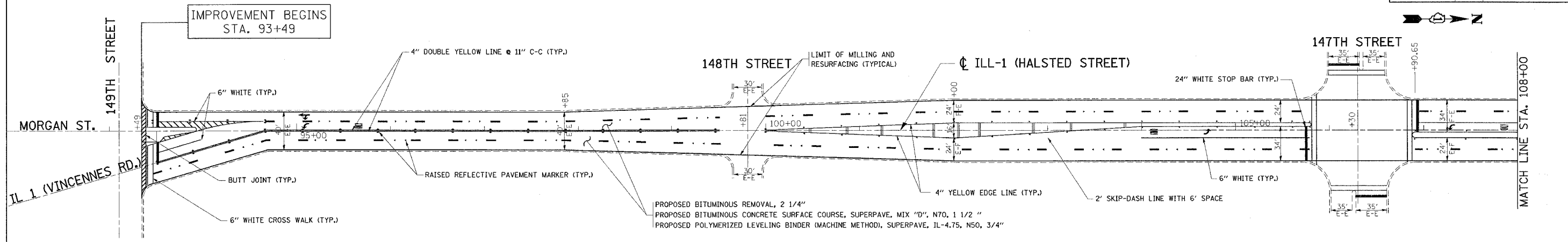
Rev.11-2-06

REVISIONS	
NAME	DATE

ILLINOIS DEPARTMENT OF TRANSPORTATION  
 ILLINOIS - 1 (HALSTED STREET)  
 FROM 144th STREET TO 149th STREET  
 SUMMARY OF QUANTITIES

PLOT DATE: 9/12/2006

F.A.U. RTE.	SECTION	COUNTY	TOTAL SHEETS	SHEET NO.
3730	3268-Z-W-1-RS	COOK	19	5
STA.		TO STA.		
FED. ROAD DIST. NO.		ILLINOIS FED. AID PROJECT		



REVISIONS	
NAME	DATE

ILLINOIS DEPARTMENT OF TRANSPORTATION  
 ILLINOIS - 1 (HALSTED STREET)  
 FROM 144th STREET TO 149th STREET  
 ROADWAY PLANS

SCALE: VERT. \_\_\_\_\_  
 HORIZ. \_\_\_\_\_  
 DATE \_\_\_\_\_  
 DRAWN BY \_\_\_\_\_  
 CHECKED BY \_\_\_\_\_

REVISOR'S MARK  
 REVISED SHEET RTB 10/26/06

PLOT DATE = 10/30/2006  
 FILE NAME = c:\pvc\p132286\design\obdgn  
 PLOT SCALE = 3/8"=1'-0"  
 USER NAME = hansen